

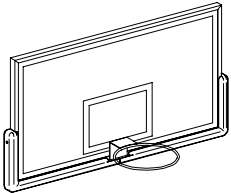


It's What the Pros Play On!®

INSTALLATION INSTRUCTIONS

PRO-PAD® BACKBOARD SAFETY PADDING KITS

No. 00326- _ _ _



⚠ WARNING

READ ALL INSTRUCTIONS THOROUGHLY BEFORE ATTEMPTING TO ASSEMBLE THIS EQUIPMENT. ASSEMBLY OF THIS EQUIPMENT MUST BE DONE BY PHYSICALLY CAPABLE ADULTS ONLY.

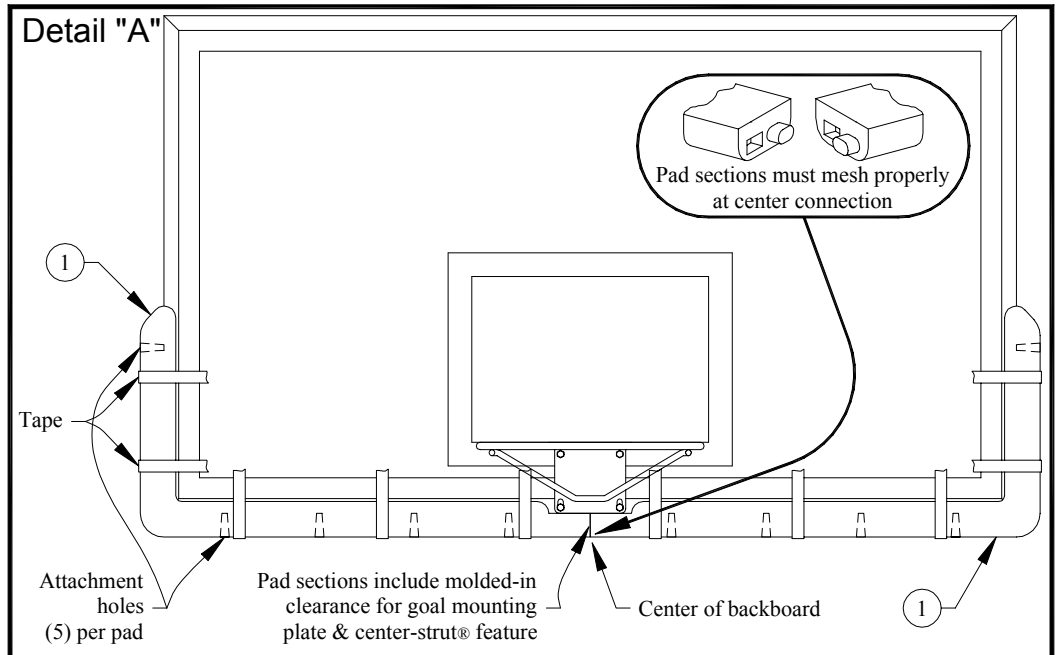
PARTS LIST

Item No.	Quantity	Description
1	2	Molded Backboard Pad Section
2	10	Self-Drilling, Self-Tapping Screw
3	10	Thread Protector

TOOLS REQUIRED: BATTERY-OPERATED PORTABLE DRILL WITH TORQUE (CLUTCH) ADJUSTMENT
5/16" SOCKET (1/4" DRIVE)

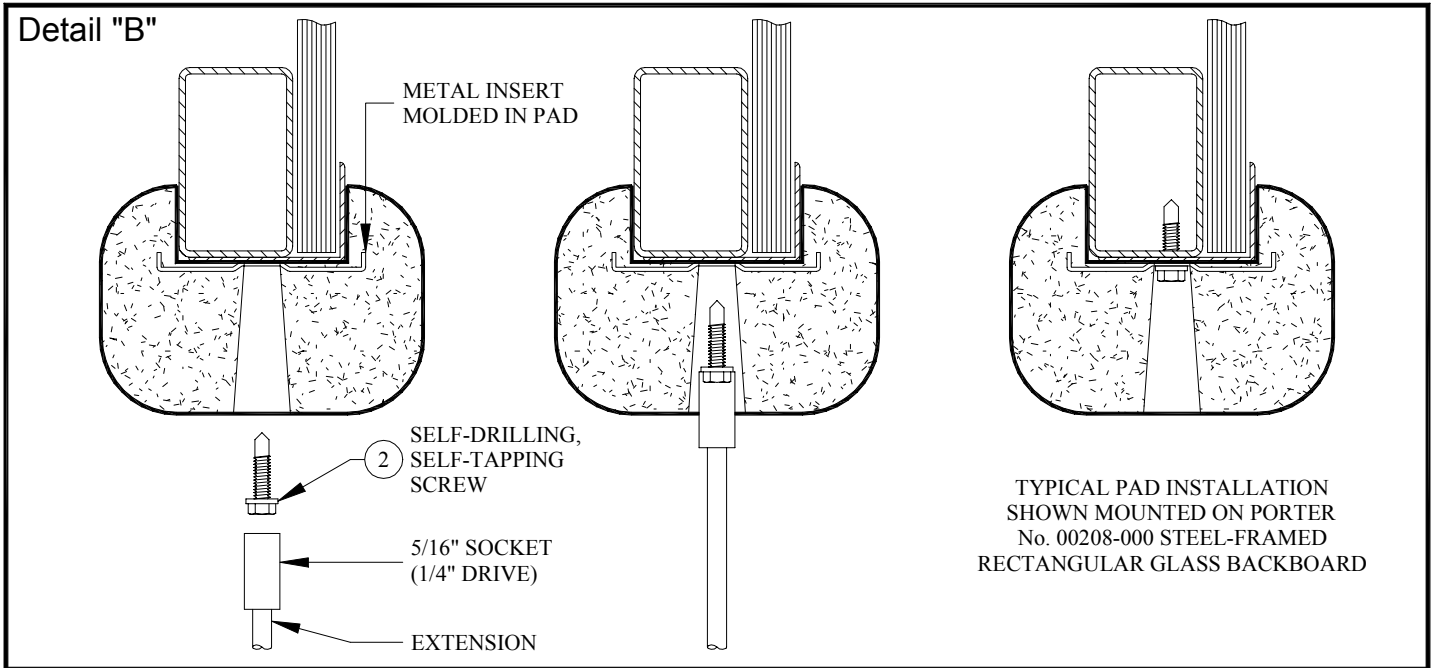
1. Check all parts against Parts List above to make sure all have been included.

2. Start by putting a mark at the center of the backboard, along the bottom of the frame. Tape both halves of pad (1) in position on backboard frame, being careful not to cover molded screw attachment holes on pads. Make sure the connection between the two pads is centered on the backboard (on the mark). Also, make sure the two pad sections are properly meshed. See Detail "A". Be careful not to push upward at the outer corners of the pad sections – make sure the corners remain square. On some units (portables, etc.), it may be necessary to notch out the rear lip of the pad sections in the center-strut® area.

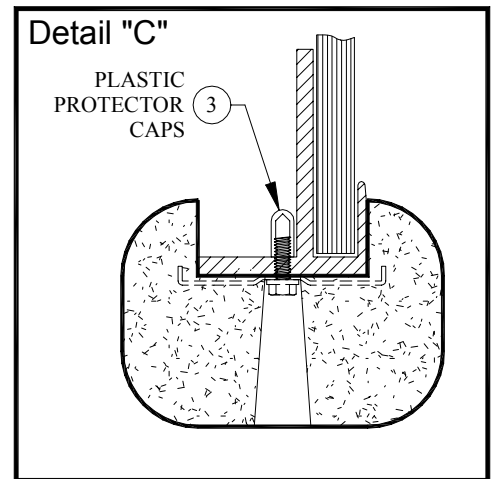


Upon completion of the installation of this kit, make sure this instruction sheet is in the possession of the owner or facility manager, to save for future reference.

- Using a portable battery-operated drill with adjustable clutch release, an extension, and a 5/16" socket, drill thru the backboard frame and secure pads (1) in place with the special self-drilling, self-tapping screws (2) provided. **IMPORTANT** – ADJUST CLUTCH ON DRILL TO MINIMUM SETTING TO PREVENT STRIPPING OF SCREW HOLES IN BACKBOARD FRAME. INCREASE CLUTCH SETTING ONLY ONE INCREMENT AT-A-TIME, UNTIL SCREWS SEAT PROPERLY. See Detail "B".



- NOTE – on backboards with heavy aluminum frames, a 5/32" pilot hole might be necessary to prevent clogging of the self-drilling, self-tapping screws.
- CAUTION** – On backboard frames where the ends of the self-tapping screws are exposed, cover the tips with the molded plastic protector caps (3) provided, to minimize the possibility of player injuries. See Detail "C".
- Clean floor area of all drill shavings, etc. to eliminate the possibility of player injuries or floor damage.



porter

Porter Athletic Equipment Company

2500 South 25th Avenue, Broadview, IL U.S.A., 60155

Toll Free: (800) 947-6783 • Phone: (708) 338-2000 • Fax: (708) 338-2060

www.porter-ath.com

SAVE THESE INSTRUCTIONS FOR FUTURE USE