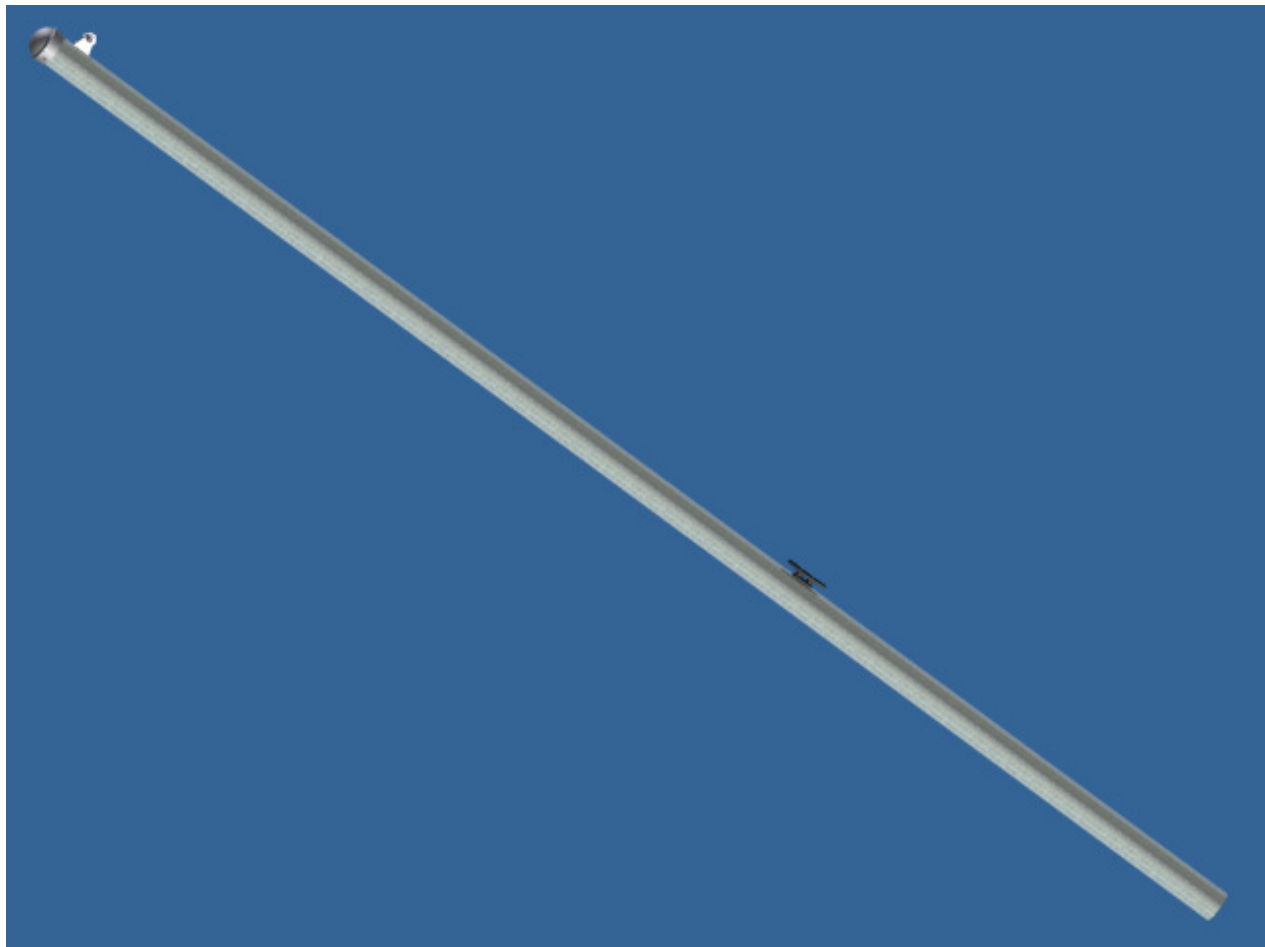




## Outdoor Batting Cage

Models: 4086



### **Operation and Maintenance Instructions**

.....  
**Please read all instructions before attempting operation of these units**  
.....

**SAVE THESE INSTRUCTIONS FOR FUTURE USE**

PUBLICATION No.  
7 0 1 7 5 5 9 1 8

REVISED  
M a y 1 7 , 2 0 1 0



# STEEL BATTING CAGE



## *Table of Contents*

<u>Section</u>	<u>Page No.</u>
Introduction	1
Cautions and Warnings	2
Unit Installation	3
Unit Operation	3
Maintenance	6

### ***Introduction/Liability Disclaimers***

Thank you for your purchase of a Performance Sports Systems Model 4086 Outdoor Batting Cage. To ensure that our equipment will provide years of use to you, we are including this operation, and maintenance guide. This guide will provide information on the proper operating procedures, and preventative maintenance of your outdoor batting cage.

Please do not substitute for factory parts. If any parts are missing, do not substitute non-factory parts. Please contact the Performance Sports Systems customer service department and allow them to determine if substitute parts are acceptable.

It is recommended that an individual who has been properly trained perform operation of the cage. No one under the age of 18 should operate the curtain, unless properly supervised.

To prevent normal wear and tear from shortening the life of the cage, preventative maintenance inspections and repairs should be performed at least once per year. If the cage is subject to high or unusual usage, inspections should be scheduled to occur more frequently. If items are found to be nonconforming, replacements can be ordered from Performance Sports Systems or one of our authorized dealers. When contacting Performance Sports Systems, please have information regarding the dealer/installer who sold the unit, the name of the project, and any applicable warranty information.



## STEEL BATTING CAGE



# CAUTION

ONLY TRAINED AND AUTHORIZED PERSONNEL SHOULD OPERATE THIS EQUIPMENT. OPERATION BY UNTRAINED OR UNAUTHORIZED PERSONNEL MAY RESULT IN DAMAGE TO THE BATTING CAGE OR CAGE STRUCTURE AND/OR INJURY TO ANYONE NEAR THE CURTAIN.

ALWAYS MAKE SURE AREA AROUND THE CAGE IS CLEAR OF PERSONNEL AND OBSTACLES.

NEVER HANG FROM SIDES OR BOTTOM OF CAGE DURING OPERATION OR WHEN CAGE IS IN THE LOWERED POSITION.

CAUTION SHOULD BE EXERCISED AT ALL TIMES WHEN OPERATING THE CURTAIN.

ALWAYS FOLLOW PROPER SAFETY RULES.



## STEEL BATTING CAGE



### *Operation*

**PLEASE DO NOT ATTEMPT TO OPERATE THIS EQUIPMENT BEFORE READING THE FOLLOWING INFORMATION!!!**

### **Model #4086 OUTDOOR BATTING CAGE**

#### *Product Overview*

**The following information is designed to assist you with the operation and maintenance of your Model #4086 Outdoor Batting Cage. We recommend that you carefully read this literature to become familiar with your new outdoor batting cage, and then develop an operation and maintenance program for the designated operator of the cage.**

It is very important that this cage be operated by **AUTHORIZED PERSONNEL ONLY**. This batting cage has been manufactured with safety in mind, but even the safest equipment can be damaged or cause damage to a person or persons when operated by unauthorized or untrained users.

- **Only authorized personnel may operate batting cage.**
- **Care must be taken to make sure the cage and areas above and below the cage are free and clear of any obstructions.**
- **Never swing or sway cage net.**
- **Rope and pulleys were designed to lift the weight of the cage only.**
- **Never hang from sides or bottom of cage net during operation or when cage is in the lowered position.**
- **Never attach or place foreign objects on the cage.**

#### INSTALLATION OF THE MODEL #4086 OUTDOOR BATTING CAGE:

1. Mark post locations using figure 3. Follow which locations dependent upon cage length.
2. Following figure 3 place concrete footings and either install the post into footing or ground sleeve if purchased. Suggest making footing able to drain any liquid away.
3. After concrete has set install posts if using ground sleeves.

#### OPERATION OF THE MODEL #4086 OUTDOOR BATTING CAGE:

1. **Starting at the center posts, remove the rope from the tie down location on the post and connect the quick link to the top corner rope of the net. It is best to have a person on each side of the net and raise both at the same time. However, one person can raise one side, and then raise the other side. And repeat the process until the net is fully raised. Tie off the rope at the tie down point on the post. See figure 2.**
2. **Once the center post are complete, move in either direction raising the net at the next set of posts.**

3. Continue this process until all the posts have the net raised.
4. To lower the net, start at one end and remove the rope from the tie down release the slack on the rope and allow the net to be lowered to the ground. Complete for each post.

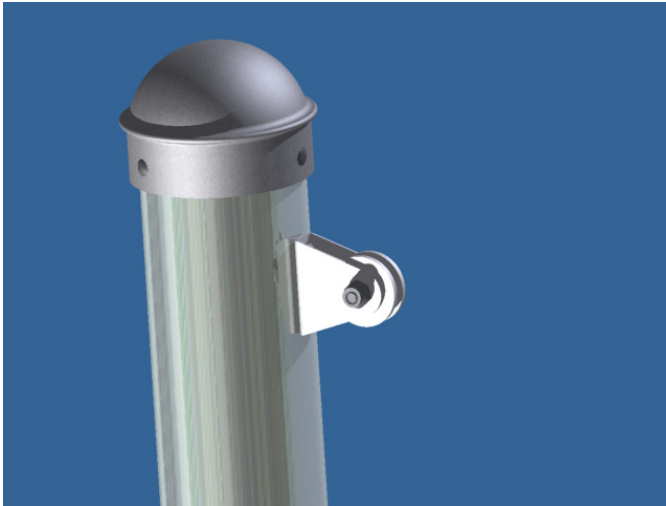


Figure 1

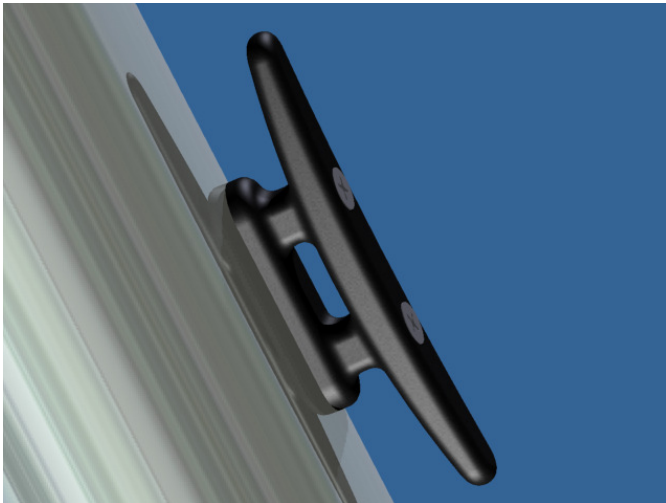
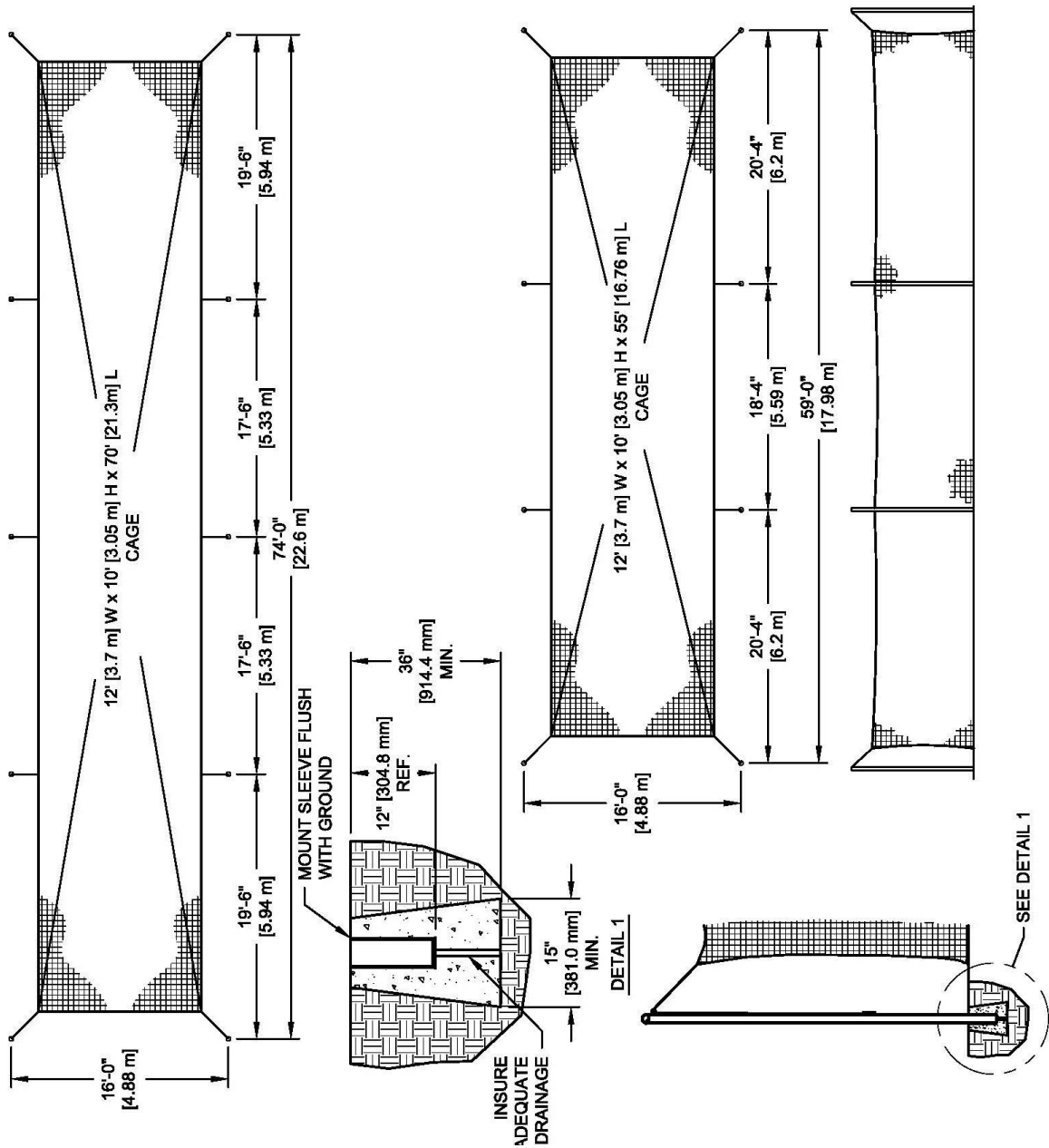


Figure 2



**Figure 3**

This Multi-Sport cage has been custom manufactured according to the Owner's/Architect's specifications. When operated and maintained with proper care, this cage should provide years of safe, trouble-free service.



## STEEL BATTING CAGE



MAINTENANCE INFORMATION – PLEASE RETAIN FOR FUTURE REFERENCE!!!

### MODEL #4086 BATTING CAGE

#### MAINTENANCE OVERVIEW

##### STRUCTURE:

We recommend a yearly inspection (or more frequently depending on usage) of the nuts and bolts, checking for tightness.

##### CAGE NETTING:

The netting should be checked on a regular basis for tears. Should the netting become damaged, it must be repaired or replaced. Contact your dealer or installation company for information on repair or replacement of the netting.

This Model #4086 Batting Cage has been custom manufactured according to the Owner's/Architect's specifications. When operated and maintained with proper care, this cage should provide years of safe, trouble free service.



# STEEL BATTING CAGE



## ATTENTION: MAINTENANCE DEPARTMENT

To confirm that you have received maintenance and warranty information, and to better serve you if you contact us, please fill out the following information and fax or mail to the address below.

Please refer to the facility name and/or the installation company below when you contact Performance Sports Systems, and include it on any correspondence.

I have received the maintenance and warranty information provided by Performance Sports Systems on the 4086 Batting Cage.

Facility/School Name: \_\_\_\_\_

Installation Date: \_\_\_\_\_ Installed by: \_\_\_\_\_

Maintenance Dept. Contact: \_\_\_\_\_

Signature: \_\_\_\_\_ Date: \_\_\_\_\_

Fax to: 1-317-774-9841

Attn: Customer Service

Or

Mail to: Performance Sports Systems

Attn: Customer Service

9200 E. 146<sup>th</sup> St., Ste. A

Noblesville, IN 46060

800-848-8034





# STEEL BATTING CAGE



## ***Maintenance Check Sheet***

Date: \_\_\_\_\_

Unit: \_\_\_\_\_

### **Unit Support Posts / Brackets**

- Tubes; dents, stress spots, etc.       OK       Repair       Replace
- Bolts; loose, deformed, etc.       OK       Repair       Replace
- Brackets; bent, not rotating, etc.       OK       Repair       Replace

### **Rope/Pulleys**

- Pulley; binding, loose, etc.       OK       Repair       Replace
- Rope; fraying       OK       Repair       Replace
- Hardware; Quick links       OK       Repair       Replace

### **Cage Netting**

- Netting; torn, missing eyelets       OK       Repair       Replace



**Gared Holdings, LLC**

**Performance Sports Systems**  
9200 E. 146<sup>th</sup> Street  
Noblesville, IN 46060

**800-848-8034**  
[www.perfsports.com](http://www.perfsports.com)

**Gared Sports**  
707 North 2<sup>nd</sup> Street  
St. Louis, MO 63102

**800-325-2682**  
[www.garedsports.com](http://www.garedsports.com)