



Nalebe Bridal Shop

CHOOSING THE BEST BRIDAL PARTY SHOES

[READ NOW](#)



KEY FACTORS..

- Comfort- Every bridal party member will agree that comfort is key during a big event!
- Style- It is important for the bridal party to match and appear unified based on the brides wishes.
- Color- Based on the brides color combination, theme, and vision. The bridal party will need to find shoes that align.



THE LOOK

BRIDAL PARTY TIP

If you're a bridesmaid in an upcoming wedding, you will most likely need to find your own shoes. Since you are a bridesmaid, be sure to confirm any shoe preferences in terms of color, style, and if the party will be matching. Once you're ready to start browsing, you can consider your preference, preferred heel height, and the types of shoes you feel most comfortable wearing.

HEEL HEIGHTS



KITTEN HEEL

Available in: 50mm



MULE

Available in: 70mm, 90mm



PUMP

Available in: 100mm, 110mm



COMFORT IS KEY

While you may not be in your shoes every moment of the day, you will be wearing them quite a lot during photos, standing for the entire ceremony, and for a majority of the reception. Comfort is one of the most important factors when choosing shoes for a wedding! Nalebe offers a variety of heel heights to ensure everyone is comfortable from day to night. Nalebe shoes also include a gel insole on the heel, with every step you take your heel will press against the soft gel and not feel an ounce of pain!

STYLES



AURUM

Pump, Mule

Available in: 50mm, 100mm



DIMANTE

Pump, Mule

Available in: 90mm



STELLAR

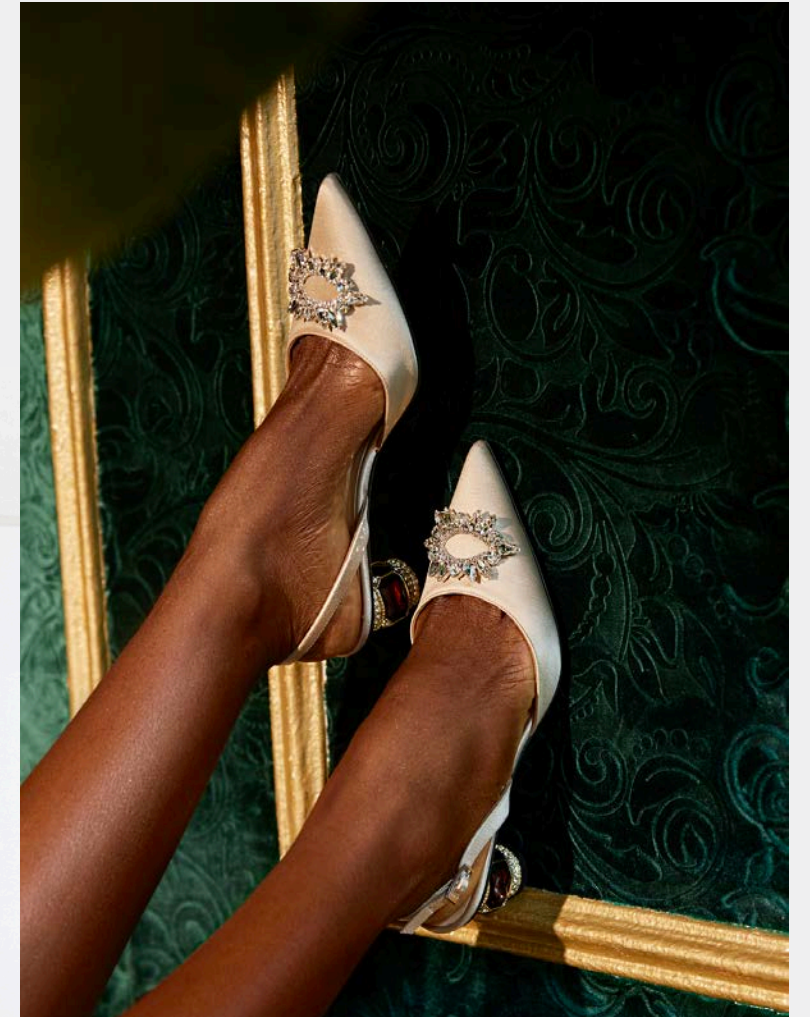
Mule, Pump, Platform

Available in: 70mm, 90mm, 130mm

TRENDY STYLES

The trend of kitten heels have taken over the wedding world! Many bridal party members prefer a strap on their shoes for dancing and smooth walking during the ceremony. Nalebe has every preference covered!

Aurum Mules are in a 50mm heel height with a custom crystal heel. There is also the Aurum 50mm Slingback that includes a strap to secure your feet.



COLORS



SINGLE COLORS

Purple, Green, Red, Blue, Pink



BI-COLORS

Pink/Green, Blue/Green



NEUTRALS

Black, Champagne, Chestnut

COLOR CHOICE

Typically, bridesmaids will be allowed to wear their preferred shoe. Brides will often let their bridal party have fun by wearing any color shoe! Other times brides will choose a matching color that needs to be worn under dresses for a unified look. Nalebe is known for vibrant colors and a huge variety! From single color shoes to bi-color shoes, Nalebe offers every color of the rainbow. For bridal parties that have a specific shoe color chosen, Nalebe offers neutral colored shoes too.





GET IN TOUCH



WEBSITE

www.nalebeofficial.com



EMAIL ADDRESS

Info@nalebeofficial.com



INSTAGRAM

[@Nalebe_official](https://www.instagram.com/Nalebe_official)