

# Lookbook

## Spring/Summer

### 2024



chilewich®





Weaving together the organic inspirations of natural curves and softened edges with an evolving array of lush textures and distinctive colors, the Spring/Summer collection celebrates the power of design to surprise and delight—and leave a lasting impression.

All products are made in the USA and suitable for indoor and outdoor use.



# Behind the Design

Having previously explored florals through printed and molded textiles, our design team set out to push the boundaries of weaving—and creativity. Botanic was developed through a playful and iterative process that began with a trip to New York’s Flower District. Back at the studio, a variety of stems were arranged on paper. These compositions were then covered in a coat of spray paint. When the flowers were lifted away from the painted paper, their silhouettes remained.

The works on paper were photographed and then the compositions were collaged digitally. Finally, the image was translated into a woven jacquard, its playful blooms enlivened through unexpected color.







# Botanic

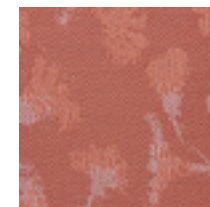
BOTANIC, MADDER





BOTANIC, MADDER

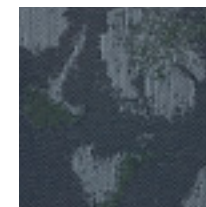
**Flower power.** Botanic is a fresh perspective on floral motifs, featuring a deconstructed bouquet brought to life on the loom. The thoughtful application of color adds dimension to this versatile and lively weave.



MADDER



SESAME



INDIGO



MINT





BOTANIC, MADDER











**BOTANIC, SESAME**





BOTANIC, SESAME





BOTANIC, INDIGO











**BOTANIC, MINT | MINI BASKETWEAVE, OCHRE | PEPPER, MINT**





# Pepper

PEPPER, MINT



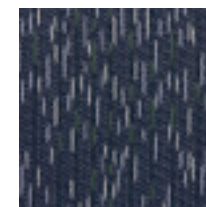


PEPPER, MINT

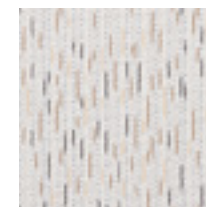
**A well-seasoned weave.** Inspired by marled knitwear, Pepper is an especially textural design that incorporates multiple hues. It was developed through an iterative process in our New York studio, where a series of handlooms ultimately yielded a harmonious balance of subtle pattern, versatile color combinations, and a uniquely tactile quality.



MINT



INDIGO

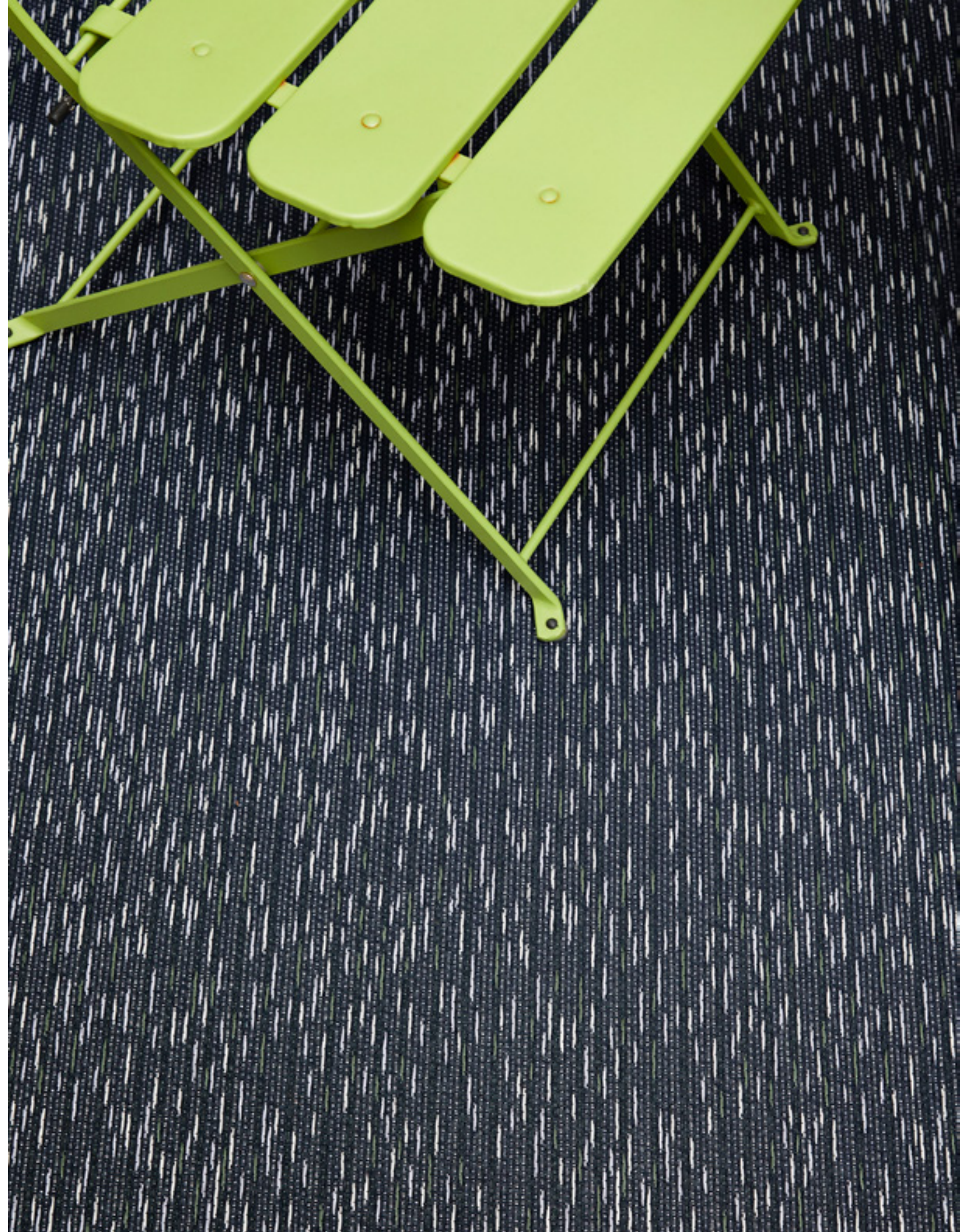


SESAME





PEPPER, INDIGO





Pepper offers two distinct looks in each placemat. On the flip side, the woven flecks are elongated into broken stripes.



PEPPER, INDIGO





PEPPER, SESAME







# Arc

ARC, SESAME



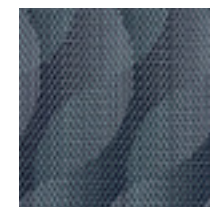


ARC, SESAME

**With a twist.** A gradation of weaves creates the soft-edged shapes of Arc. Rows of layered crescents intersect and align to form a dynamic pattern of connected curves and rich texture.



SESAME



INDIGO



AZALEA





ARC, SESAME





When Arc placemats are flipped over, a different color comes to the fore, offering two distinct looks in one.







ARC, INDIGO



ARC, INDIGO





ARC, AZALEA





# warp

WARP, SAND





WARP, SAND

**Optical allusions.** The geometry, symmetry, and contrast of a checkboard pattern are playfully softened in Warp. Squares break free of the grid, stretching and bending to form rows of undulating organic lines in natural tones.



SAND



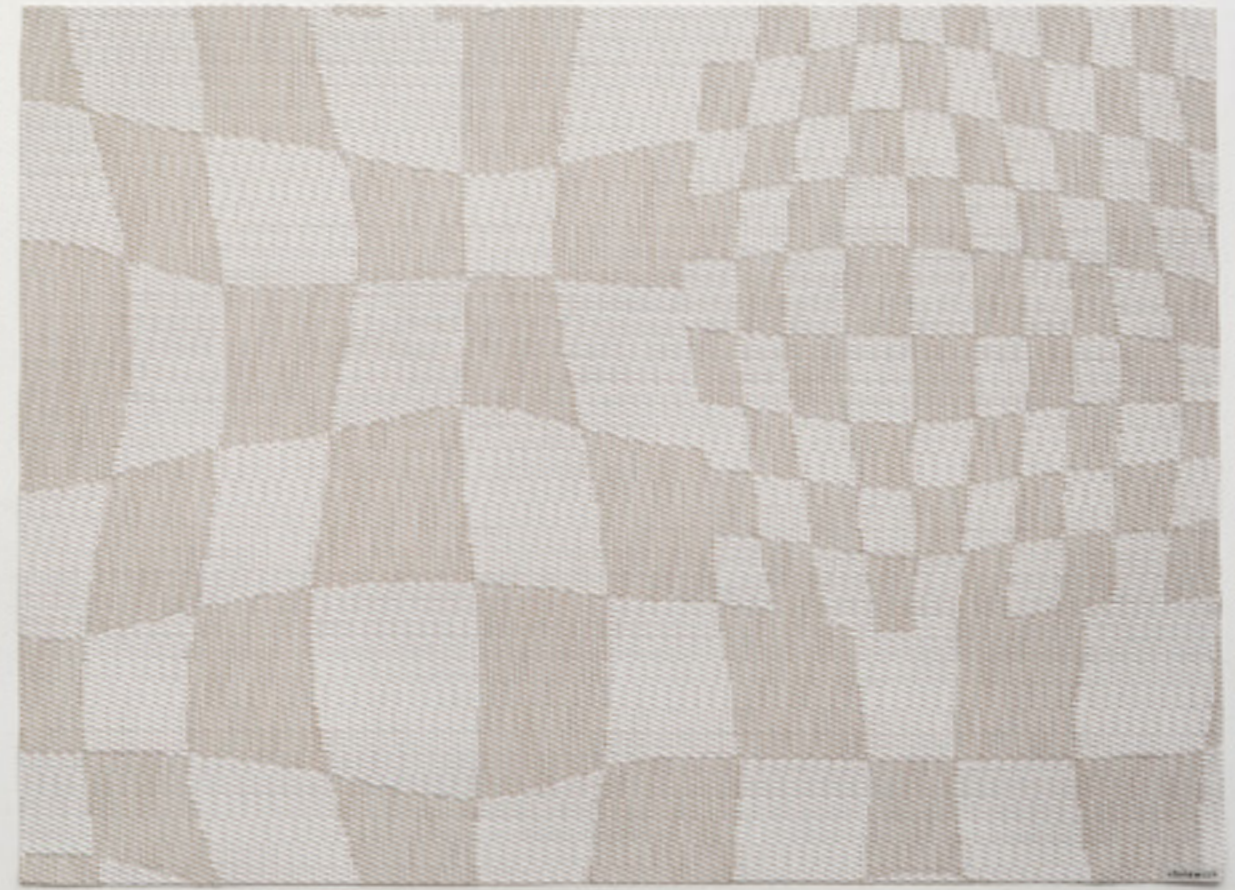


WARP, SAND





Our design team developed Warp to have an especially large scale, ensuring that each placemat is unique.





A photograph of a wooden table with a speckled rug and two white ceramic cups. The table is made of light-colored wood and has a rounded corner. On the table, there are two white ceramic cups, one with a handle and one without. The rug is a mix of grey, brown, and white speckles. The background is a plain white wall.

NEW COLORS

# Basketweave

BASKETWEAVE, BON BON





**New signatures.** Rooted in the oldest and simplest of weaving constructions, Basketweave continues to be a vital means for expressing our unique chromatic point of view. The Spring/Summer collection introduces two nuanced color combinations. Bon Bon combines vibrantly hued yarns with versatile neutrals, while Teak celebrates the natural beauty and distinctive golden-brown tones of its namesake hardwood.



BON BON



TEAK





BASKETWEAVE, BON BON





BASKETWEAVE, TEAK







BASKETWEAVE, TEAK





NEW COLOR

# Mini Basketweave

MINI BASKETWEAVE, OCHRE





MINI BASKETWEAVE, OCHRE

**Golden hour.** Mini Basketweave is our signature Basketweave in half time. Instead of four yarns over four, Mini Basketweave is two yarns over two, resulting in a quieter, less textural surface. Spring marks the debut of Ochre, spanning tones of sun, honey, and earth.



OCHRE





MINI BASKETWEAVE, OCHRE





MINI BASKETWEAVE, OCHRE







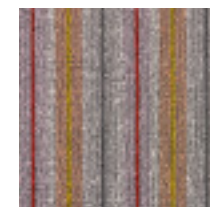
# Ribbon Stripe Shag

RIBBON STRIPE SHAG, BON BON

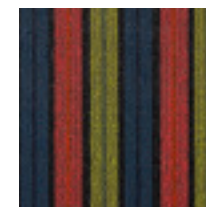




**Stripes within stripes.** A dynamic balance of bold hues, rich texture, and graphic precision, Ribbon Stripe traces bands of color with fine lines. Harmonized by neutral hues, this vibrant design offers a new way to incorporate brights into a broad range of spaces and styles.



BON BON



LIMELIGHT





RIBBON STRIPE SHAG, LIMELIGHT





NEW COLORS

# Solid Shag





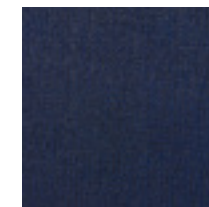


SOLID SHAG, CANARY

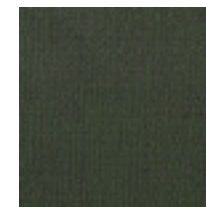
**In living color.** Once reserved for dark neutrals, Solid Shag mats highlight the irresistible texture created by tufted loops of our TerraStrand yarns. Five new hues allow this staple style to make a statement with color, indoors or out.



CANARY



INDIGO



CACTUS



SNOW



CARA CARA





SOLID SHAG, INDIGO





The Spring/Summer collection's Shag mats were developed with sustainability in mind. All make use of surplus yarns rather than requiring the creation of new yarns.



**SOLID SHAG, CACTUS**





SOLID SHAG, SNOW







SOLID SHAG, CARA CARA





# Designed to inspire. Made to last.

Founded in 2000, Chilewich pushes the boundaries of form and function through products that combine innovative textiles and distinctive colors with extraordinary durability and easy maintenance. Our designs can be found in the permanent collection of the Cooper Hewitt, Smithsonian Design Museum, and in homes, workplaces, restaurants, hotels, and vehicles around the world.



# Stay in the loop.

Learn about our latest weaves, design debuts, special events, and more at [chilewich.com](https://chilewich.com), and keep in touch with our textures by following us on Instagram at [@chilewich](https://www.instagram.com/chilewich).

Chilewich | Sultan LLC  
39 West 19th Street  
New York, NY 10011

Chilewich® and TerraStrand®  
are registered trademarks.  
All rights reserved.

Photography: Aaron Limoges, Robert Mandolene, Megan Senior

© 2023 Chilewich | Sultan LLC

chilewich®