

TOYOTA LAND CRUISER 200 Series INSTALLATION MANUAL

Installation Time (Hours):

0.5

1

2

3

Professional installation recommends

TOOLS

卷尺



Tape

一字螺丝刀



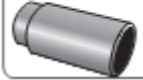
Screwdriver

棘轮



Ratchet

插口



10mm 13mm

Wrench wire nippers wire stripper insulated rubber tap

通用扳手



剪线钳



剥线钳



绝缘胶带



Attention:

We highly recommend you to find professional store to install the product.

Attention:

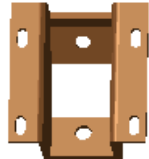
not follow the instruction may damage the ECU, motor or the car.

Toyota Land Cruiser 200 Series Installation Manual

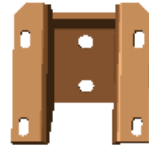
Accessories List



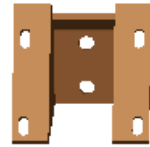
ECU



Front Bracket connection, 2 pcs



Middle Bracket connection, 2 pcs



Rear Bracket connection, 2



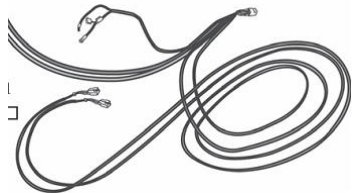
Idler bracket, 4pcs



Motor bracket, 2pcs



OBD KIT 1 SET



Wire harness: one set for motor power and signal



M8*20 socket cap screw 12PCS



N6*25 socket cap , 12screw



U shape washer, 10 pcs



M8 washers, 12pcs



M6 spring washer 12 pcs



M6 washers, 12pcs



Plastic Line, 1 pc

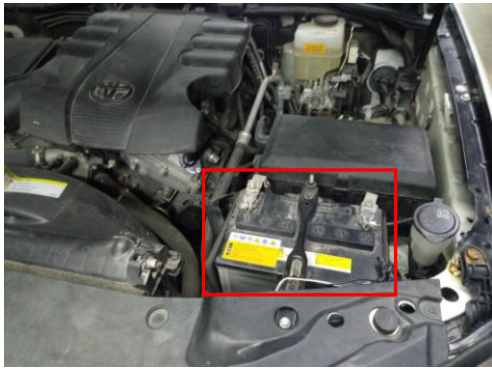


Tie wire ,20 pcs

Screw Package List

Toyota Land Cruiser 200 Series Installation Manual

1. install ECU, OBD and wiring



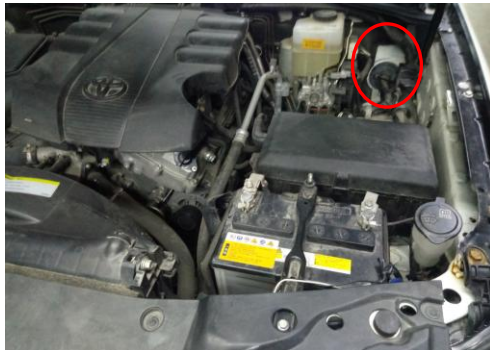
1) Open engine compartment and find the battery



2) take out fuse



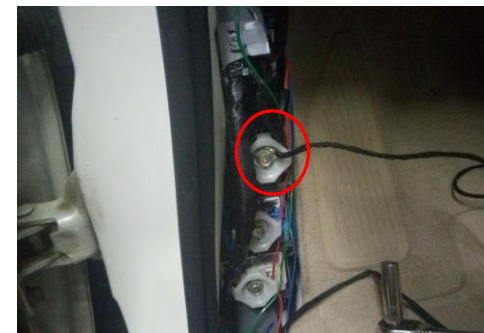
3) connect positive pole of a battery
CAUTION!: Tighten battery screw very tight! If loose, may get damage to the car.



4) Find the left hole in the engine compartment



5) Connect positive pole line to the left side of the car



6) Connect negative pole line to the negative pole of the car

Toyota Land Cruiser 200 Series Installation Manual



7) Find the left original M6 screw hole



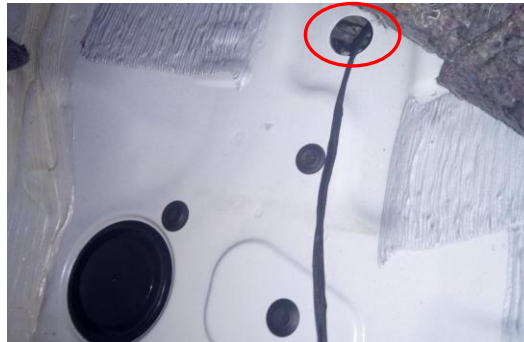
8) Disassemble the steering wheel



9) Directly insert OBD in the diagnostic interface
OBD of original vehicle in this place



10) Lift off carpet on the left and
find this hole



11) Wear the left motor line to the
chassis site



12) the right motor line is the
same as the left

13) Connect motor connectors
and use tape to protect,
connect OBD line with ECU
connector, insert fuse to test if
motor work well

Toyota Land Cruiser 200 Series Installation Manual

Regarding LC200 2019+, OBD signal obtaining is changed as below:



13) Move the decorative panel under the steering wheel



14) Start the engine to turn the steering wheel and move the screws out



15) Find this plug under the steering wheel

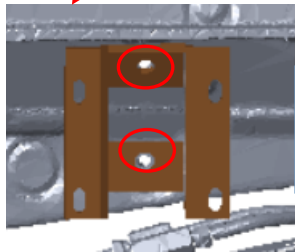
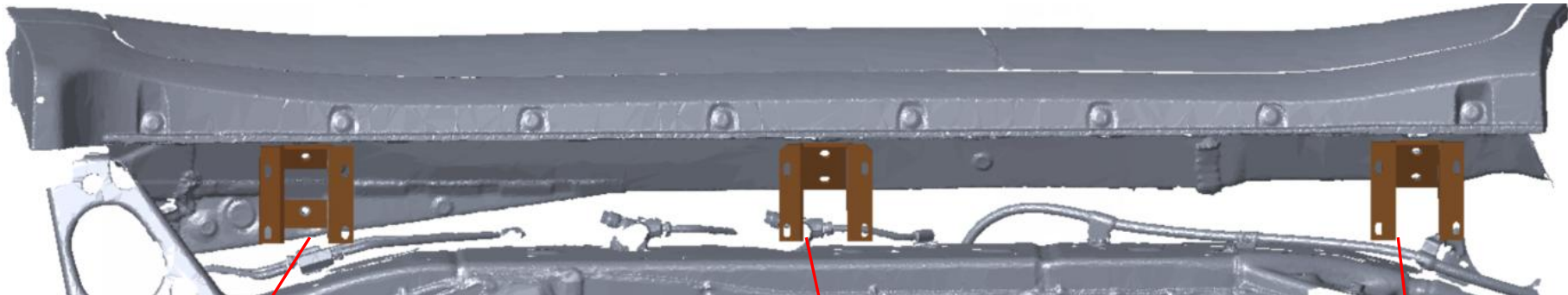


16) Unplug it and connect it with our plug to obtain the signal

Toyota Land Cruiser 200 Series Installation Manual

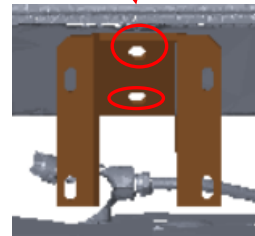
Car Direction; Left Side

2. Install bracket connection (left side)(The installation of the right is same as the left)



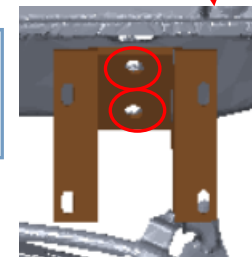
Left-front bracket connection

Use M8x20 socket cap screw to fix, 2pcs



Left-middle bracket connection

Use M8x20 socket cap screw to fix, 2pcs



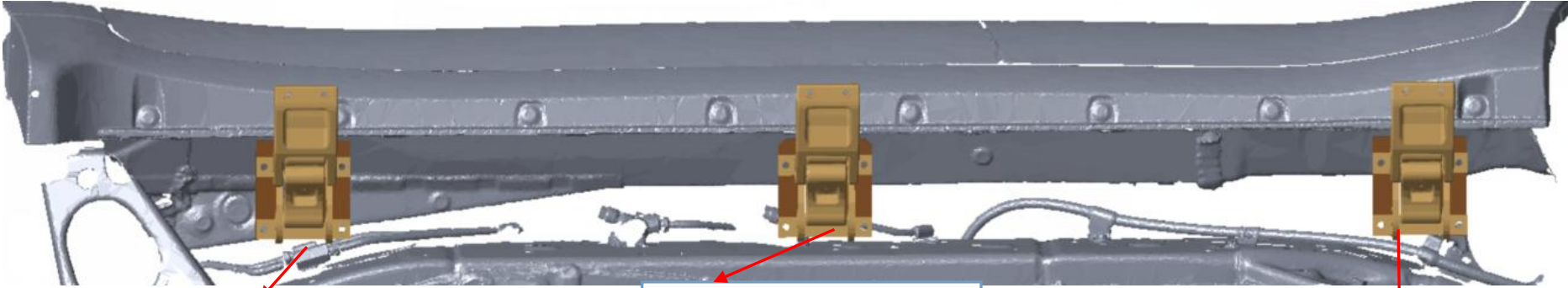
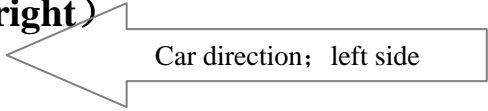
Left-front bracket connection

Use M8x20 socket cap screw to fix, 2pcs

Cautions: Tighten all the screws.

Toyota Land Cruiser 200 Series Installation Manual

3.Install Bracket (Left Side is same as the right)

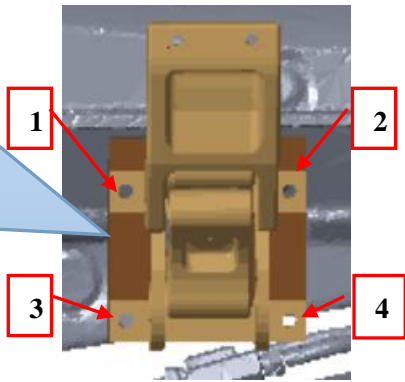


Left-front bracket

Left-middle bracket with motor

Left-rear bracket

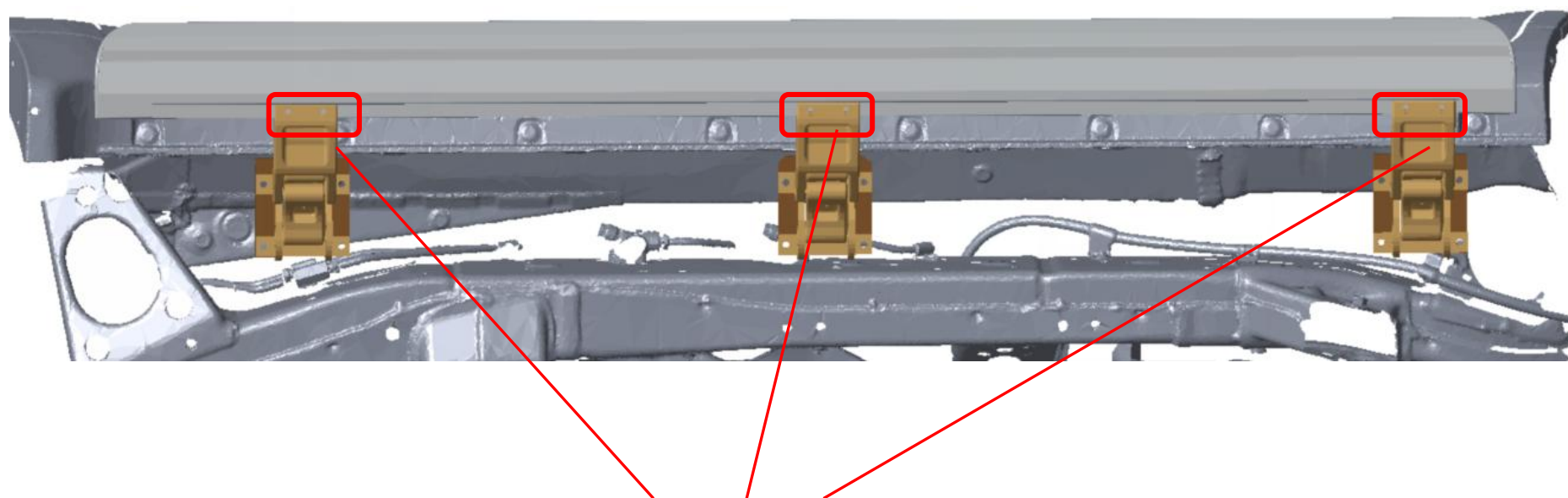
Place 1.2.3.4 use M8x30 screw and M8 screws to install;
the rest of three brackets as same as this one:



Caution; Place 1.2.3.4. don't tighten the screws

Toyota Land Cruiser 200 Series Installation Manual

4. Install running board (left side) (The installation of the left is same as the right)



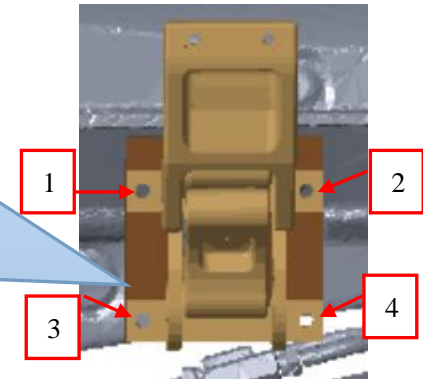
use M6x25 socket cap screw to fix running board with brackets as the picture above showed. **TIGHTEN SCREWS !!**

Toyota Land Cruiser 200 Series Installation Manual

5. Testing and adjust brackets and screws to keep the balance



Tighten 1.2.3.4 screws; If still not balance, use U shape washer to adjust it.



1) When running board installed finish, open and close the doors for testing, keep the brackets balanced and stay in the same line

Toyota Land Cruiser 200 Series Installation Manual



Installation completion effect