

INSTALLATION MANUAL FOR RANGER 2022+

Need following tools:



Spanner tool



Electric tape



plastic tool



Pincher



Attention:	We highly recommend you to find professional store to install the product.
Attention:	If not follow the instruction may damage the ECU, motor or the car.

INSTALLATION MANUAL FOR RANGER 2022+

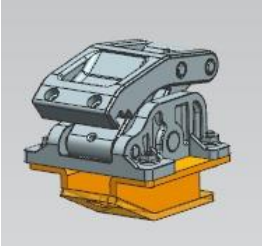
COMPONENTS LIST



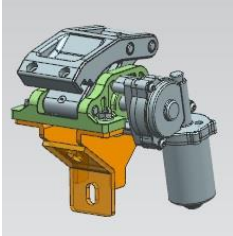
board 2 pcs



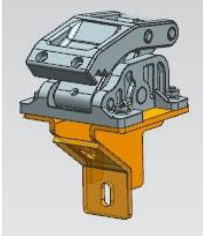
ECU 1 pcs



Rear Bracket
2 sets











Middle
Bracket 2 sets



Front Bracket
2 sets



Wiring 1 pc

				
M6*25 socket cap screw 12pcs	M10*30 socket cap screw 12pcs	M10 washer 12pcs	M10 spring washer 12pcs	Tie wire 20 pcs
			Screw package	
U washer 10 pcs	M6 spring washer 12pcs	Plastic line 1 pcs		

INSTALLATION MANUAL FOR RANGER 2022+

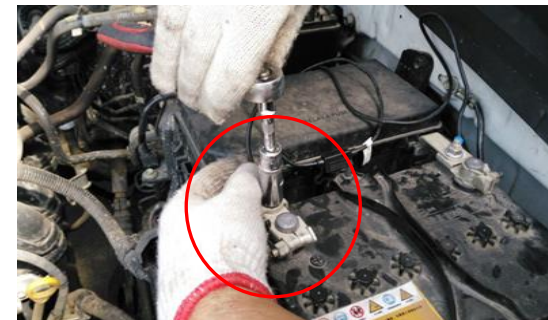
1. Install ECU, OBD and wiring



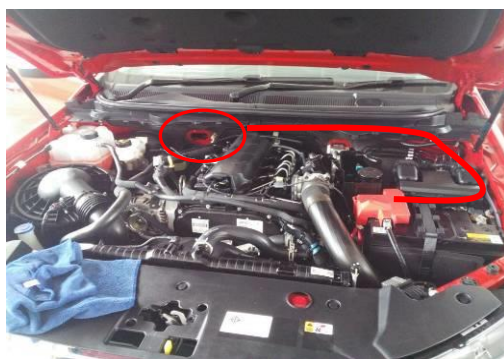
1) take out fuse



2) connect positive of the battery



3) **IMPORTANT!:** Tighten battery screw very tight! If loose, may get damage to the car.



4) from that position to put through of the positive wiring into driver side cabin.



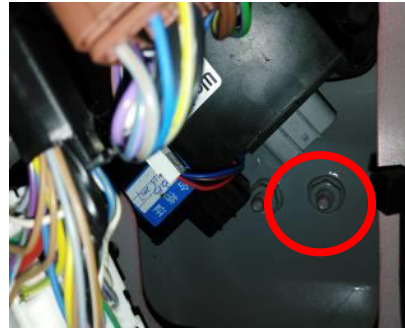
5) find negative at left position



INSTALLATION MANUAL FOR RANGER 2022+



6) ECU fixing as above by screw



7) right motor line from above position from chassis to cabin, under seat



8) motor line from above position from chassis to cabin



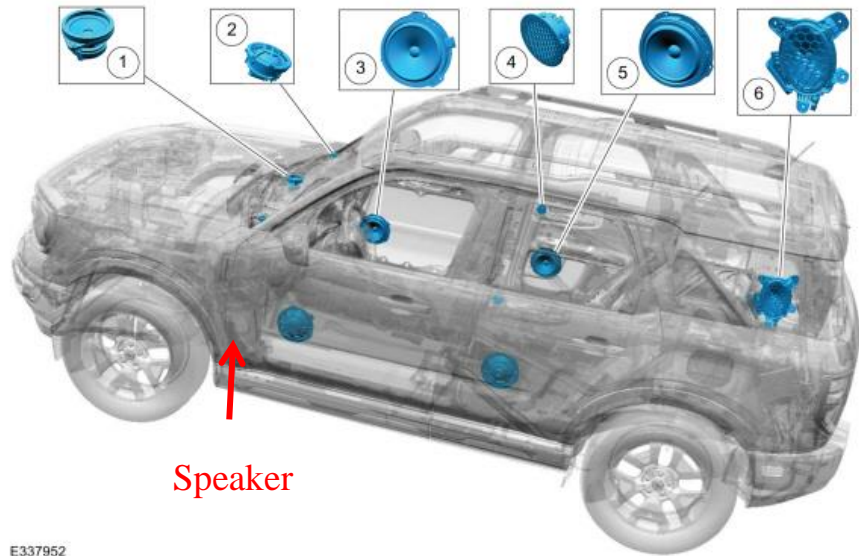
9) motor line from this hole to cabin



10) left motor wire from this position to left side

INSTALLATION MANUAL FOR RANGER 2022+

11) Find Blue-White twisted wires in the driver side under the speaker as below,

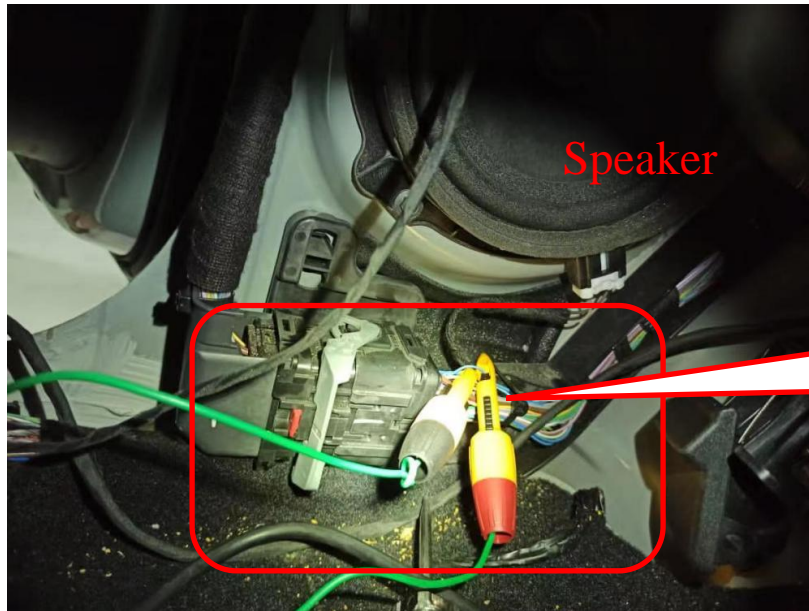


E337952



INSTALLATION MANUAL FOR RANGER 2022+

12) Find Blue-White twisted wires in the driver side under the speaker as below,

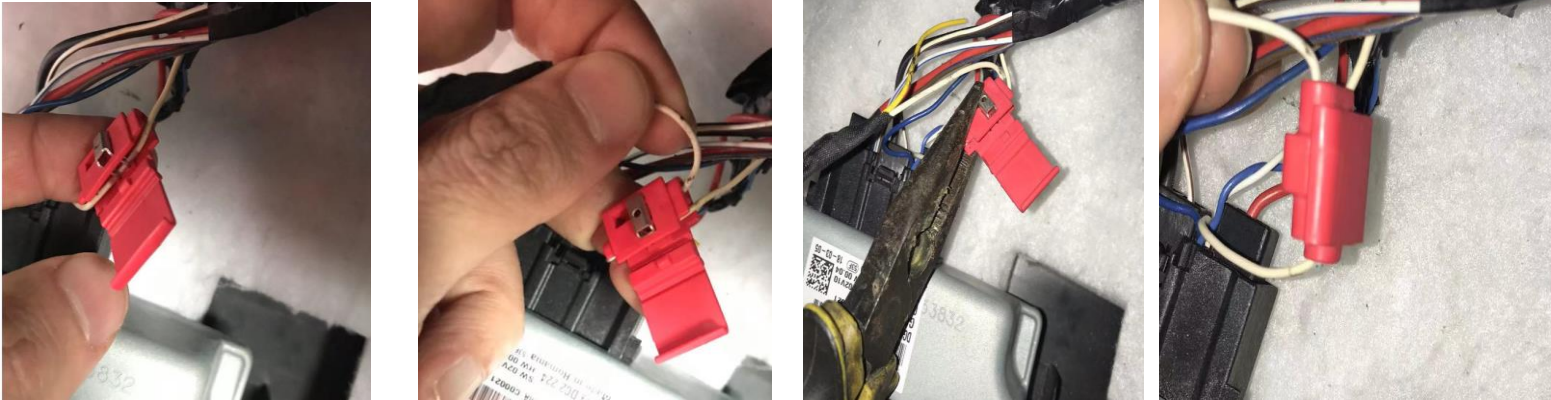


Blue-White twisted wires

13) Connecting Blue-White twisted wire from vehicle with Yellow-White wire from electric steps wiring by red clips or hand-wiring as below,
Yellow Wire(from Electric Steps) --- Blue Wire (Blue-White twisted wire from vehicle)
White Wire(from Electric Steps) --- White Wire(Blue-White twisted wire from vehicle)

INSTALLATION MANUAL FOR RANGER 2022+

14) White wiring: put original white wiring through clip hole, put our white wiring into another hole of the clip , use pincers to push metal of clip until it flat , fasten clip to avoid it loose. Pictures as below:



15) Do same for blue wiring (original blue wiring to our yellow wiring). Final picture as below:



INSTALLATION MANUAL FOR RANGER 2022+

16) use tape to protect all connector, insert ECU connector, connect with motor and put bracket on the ground, insert fuse. Open and close the doors to check if motor deploy and retract

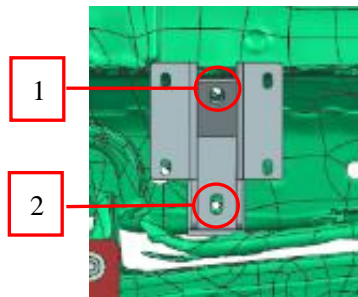
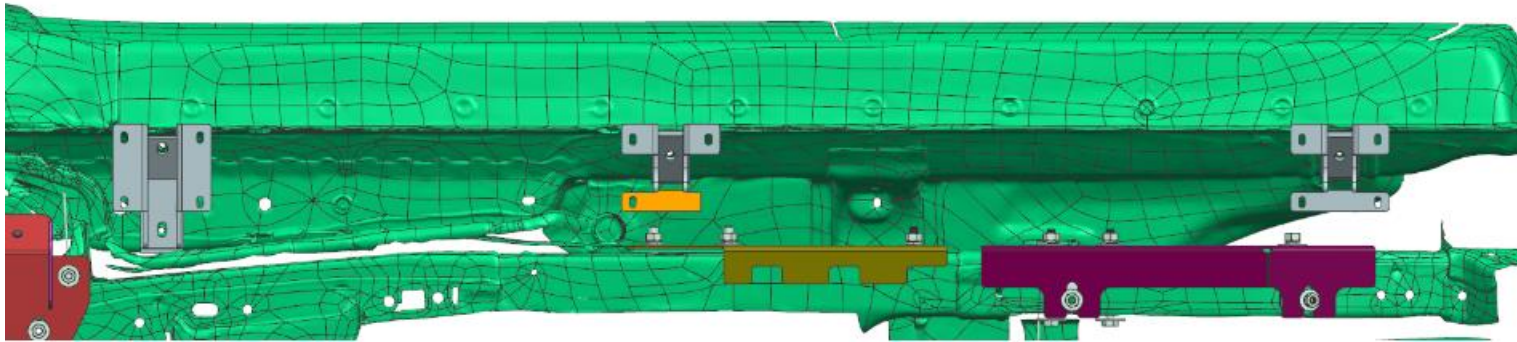


17) Put brackets on the ground, open and close the door, the bracket should work

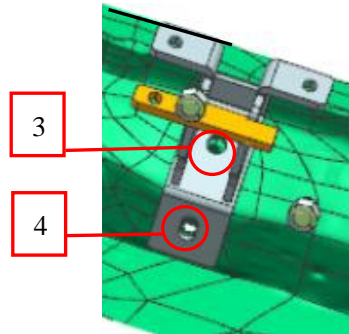
18) if motor not work, it means product not work, double check the previous process or contact dealer for help

INSTALLATION MANUAL FOR RANGER 2022+

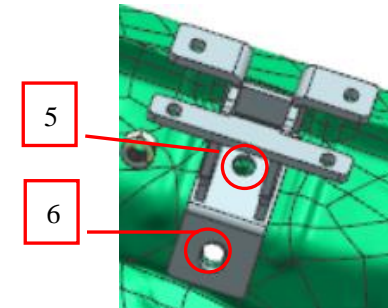
2. Fix right side brackets base on body (same way for left side)



RR



RM

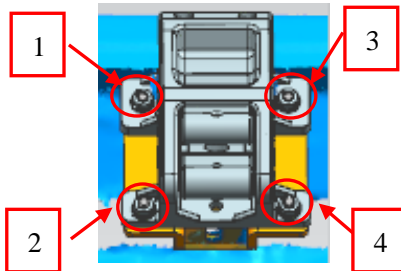
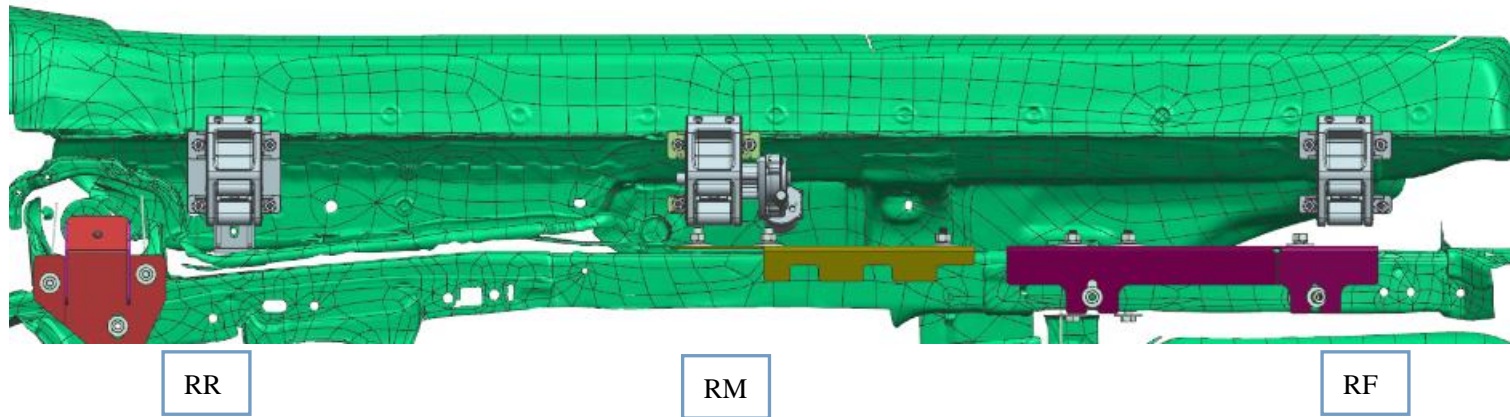


RF

1-6, use M10x30 screws to fix. Tighten all screws

INSTALLATION MANUAL FOR RANGER 2022+

3. Install brackets with brackets base

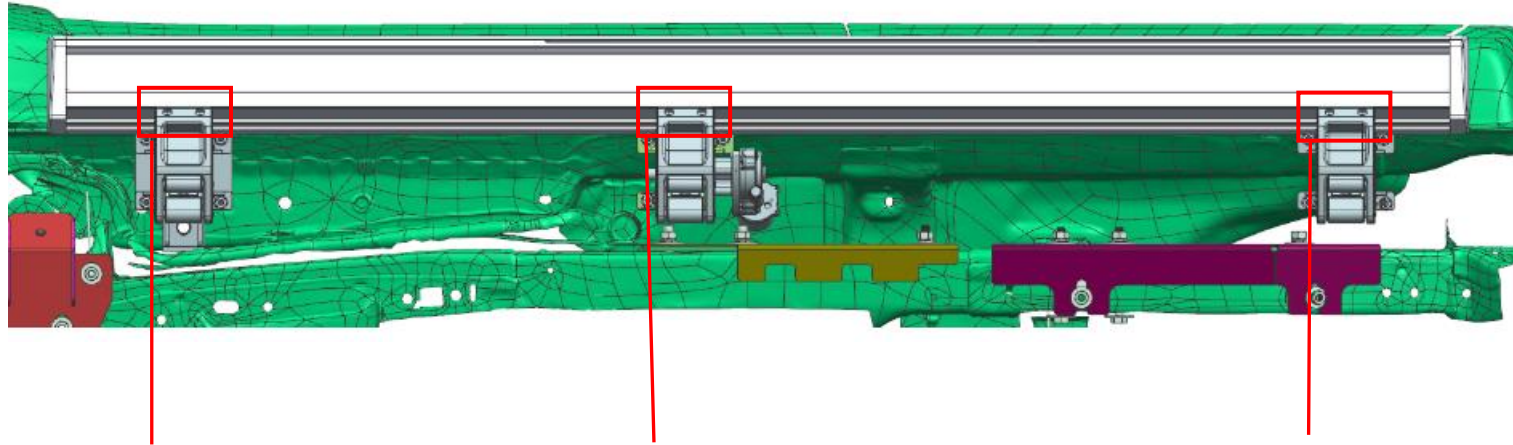


1.2.3.4 place is fixed with M8*30 carriage screws and the other two supports are the same **Important: not tighten nuts, keep them a little loose**

KEEP ALL SCREWS A LITTLE LOOSE, SO THAT BRACKETS CAN MOVE WHEN ADJUST BALANCE

INSTALLATION MANUAL FOR RANGER 2022+

4. Install right side board (Left side same as left side)

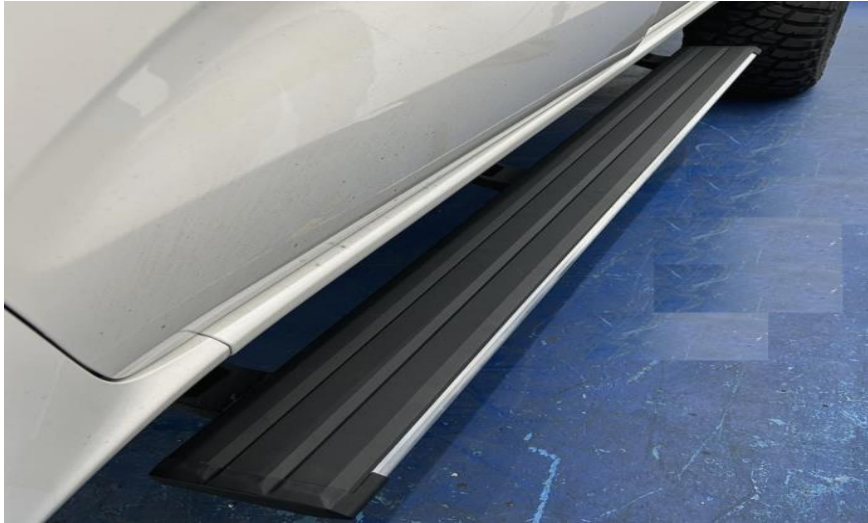


Use M6x25 screw and spring washers to fix running board with brackets.

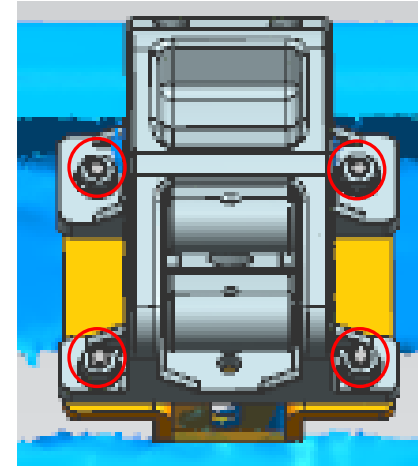
TIGHTEN SCREWS TO FIX BOARD WITH BRAKETS!

INSTALLATION MANUAL FOR RANGER 2022+

5. Testing and adjust the balance



Insert fuse again. Then open and close doors to let step work.
To assure them up and down freely to adjust position by itself.



FASTEN ALL SCRWS ON THE BRACKETS

If still not balance, use U shape washer to
adjust it.

6, Checking all doors activate, the side step work when doors open and close.
Now the installation is finished. Protect all connectors with tap to avoid loose.