

Nissan Patrol Installation Manual

Installation Time (Hours):

0.5 1 2 3

Professional installation recommends

Tools:

 ratchet wrench

 insulated rubber tape

 Plastic warped board

 pincher



Caution

We highly recommend you to find professional store to install the product.

caution

If not follow the instruction may damage the ECU, motor or the car.

Nissan Patrol Installation Manual

Accessories List

Panel, 2pcs



ECU



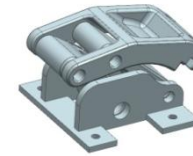
Front Bracket connection, 2 pcs



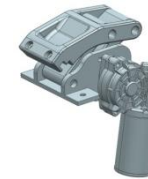
Middle Bracket connection, 2 pcs



Rear Bracket connection, 2



Idler bracket, 4pcs



Motor bracket, 2pcs



OBD KIT 1 SET



Wire harness: one set for motor power and signal



M8*35 socket cap screw 12pcs



N6*25 socket cap screw, 12pcs



U shape washer, 10 pcs



M8 washers, 12pcs



M6 spring washer 12 pcs



Plastic Line, 1 pc

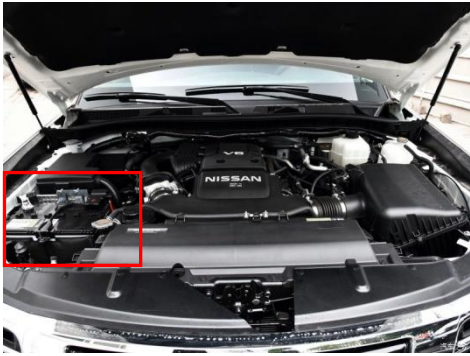


Tie wire, 20 pcs

Screw Package List

Nissan Patrol Installation Manual

1. Install ECU, OBD and Wiring



1) Open engine compartment and find the battery



2) take out fuse



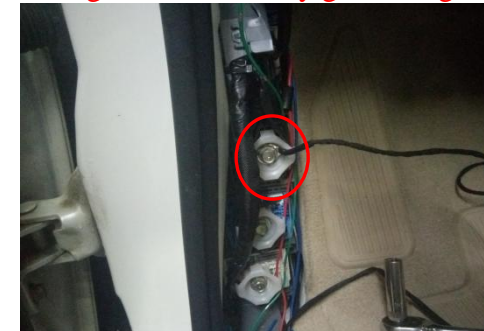
3) connect positive pole of a battery
CAUTION!: Tighten battery screw very tight! If loose, may get damage to the car.



4) Find the left hole in the engine compartment



5) Connect positive pole line to the left side of the car



6) Connect negative pole line to the negative pole of the car

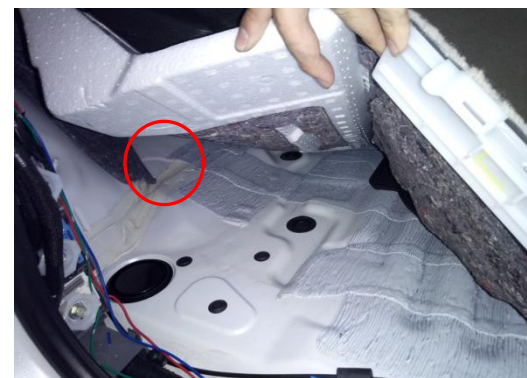
Nissan Patrol Installation Manual



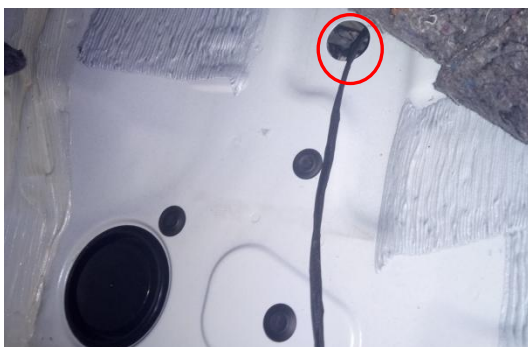
7) Find the left original M6 screw hole



8) Fix with M6 screws



9) Lift the carpet of the driving position on the left



10) Wear the left motor line to the chassis site

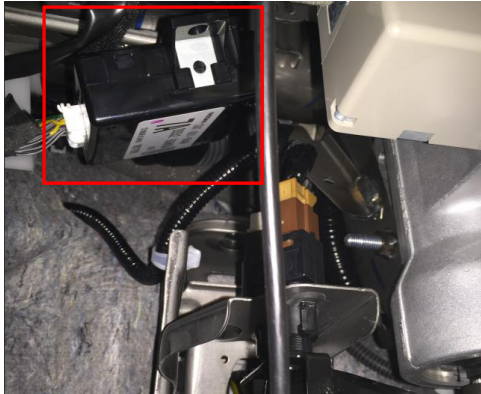


11) the right motor line is the same as the left



12) Lift the carpet on the right, Connect the right motor line to the chassis

Nissan Patrol Installation Manual



7) Find this module in the driving position

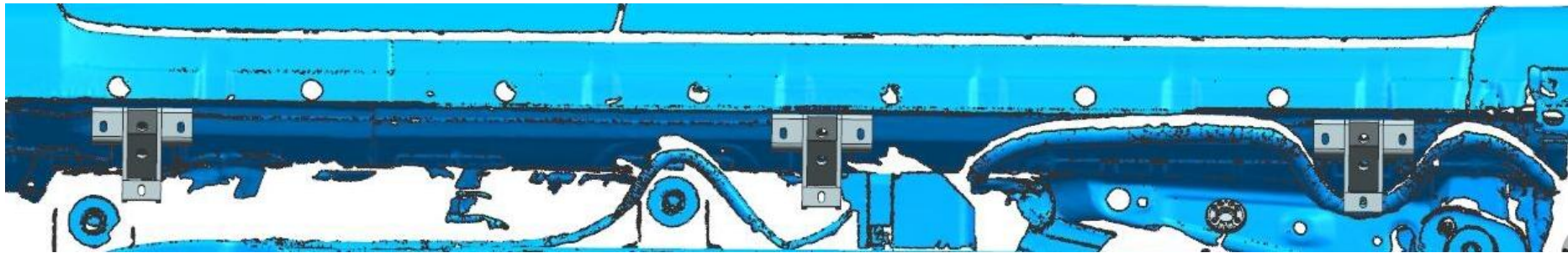


8) Pull out the plug and insert with the plu we offer

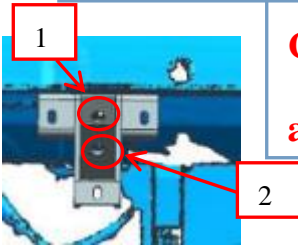
Nissan Patrol Installation Manual

Car direction (right side)

2. Install bracket connection (right side) (The installation of the left is same as the right)

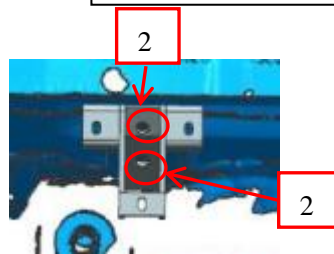


Left-front bracket connection

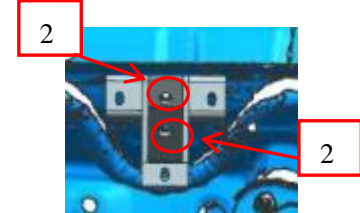


Cautions: Don't tighten all the screws.

Right-middle bracket connection



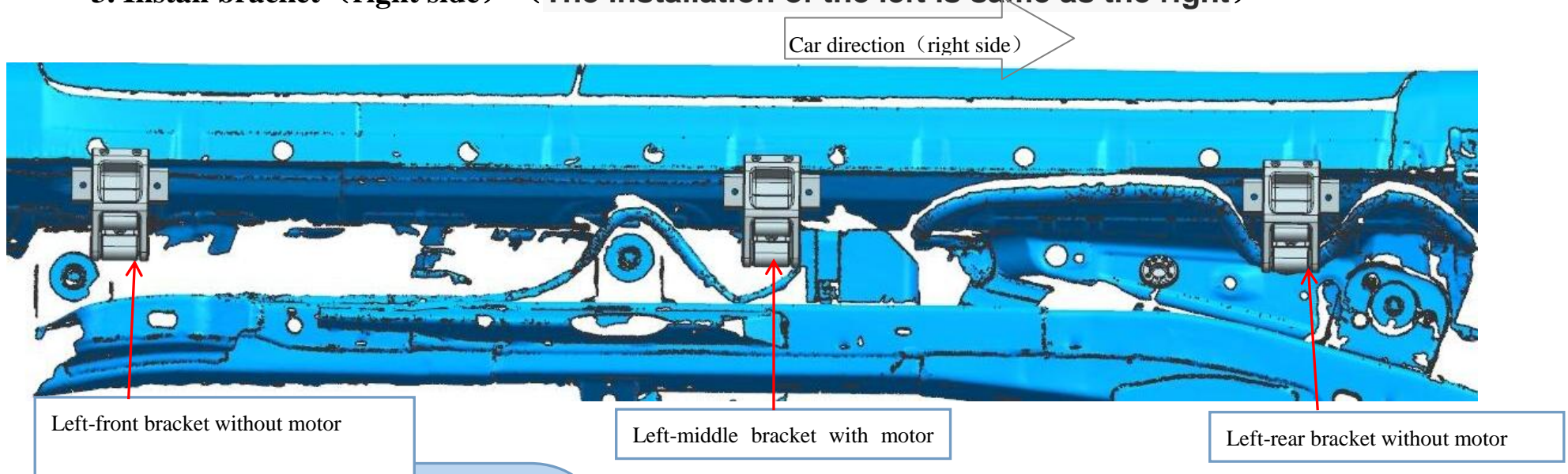
Right-front bracket connection



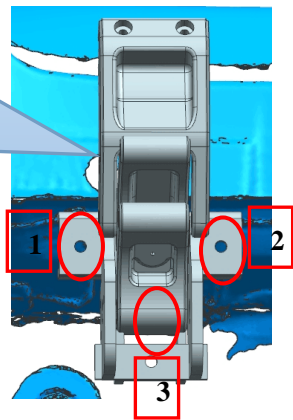
NO.1.2.3.4.5.6 use M8X35 socket cap screw to fix

Nissan Patrol Installation Manual

3. Install bracket (right side) (The installation of the left is same as the right)



No.1.2.3 use M8x30 screw and M8 screws to install;
the rest of three brackets as same as this one;

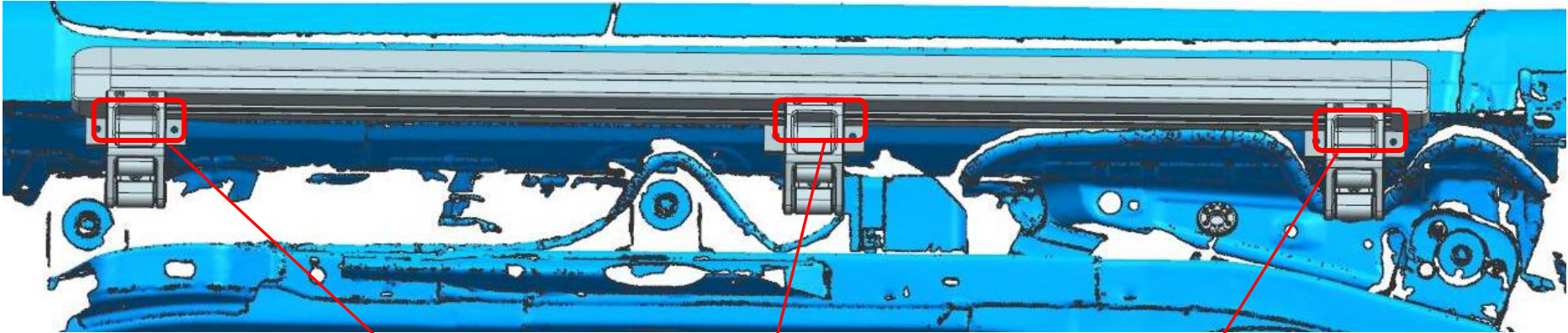


Caution: No.1.2.3 don't tighten the screws

Nissan Patrol Installation Manual

Car Direction: right side

4. Install running board (right side) (The installation of the left is same as the right)



1) Use M6x25 socket cap screw to fix running board with brackets as the picture above showed. **TIGHTEN SCREWS !!**

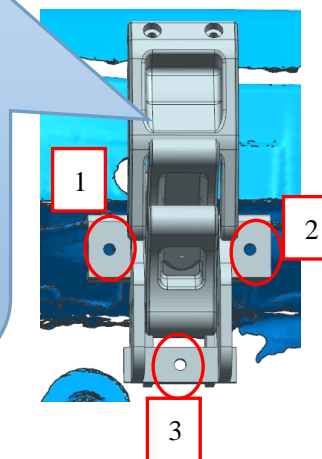
Nissan Patrol Installation Manual

5. Testing and adjust brackets and screws to keep the balance



2) **1 & 2 & 3: Fasten all the screws on the brackets; the rest of three brackets as same as this one;**

If still not balance, use U shape washer to adjust it.



1) When running board installed finish, open and close the doors for testing, keep the brackets balanced and stay in the same line

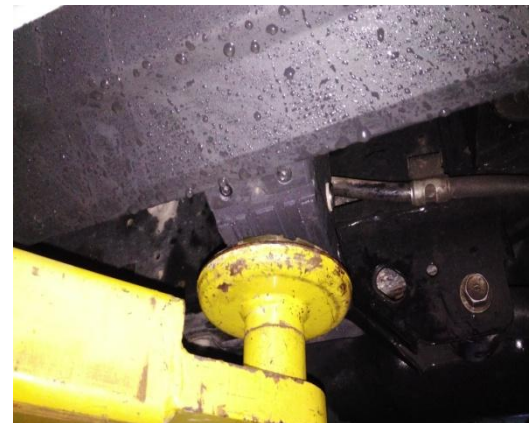
Nissan Patrol Installation Manual



Installation completion effect



To lift the car
as showed



To lift the car

Nissan Patrol Installation Manual



To changing tire

Automatic power deploy:

The running boards will extend down and out when the door is opened.

Automatic stop:

If an object is in the way of the moving running board, the running board will automatically stop. To reset, clear any obstruction, then simply open and close the door to resume normal operation.

Manually set in the deployed (OUT) position for access to the roof:

Step your foot while at the same time closing the door. To resume normal operation, open and close the door.

Maintenance: In adverse conditions, debris such as mud, dirt, and salt may become trapped in the running board mechanism, possibly leading to unwanted noise. If this occurs, manually set the running boards to avoid spraying the motors directly. After washing, apply silicone spray lubricant to the hinge pivot pins.

Caution! Keep hands and feet away when the running board is in motion.