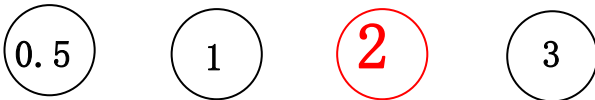


# INSTALLATION MANUAL FOR ISUZU D-MAX/MUX

## Installation time



Professional installation recommends

## Tools



12mm 13mm



### Attention:

We highly recommend you to find professional store to install the product.

### Attention:

not follow the instruction may damage the ECU, motor or the car.

# INSTALLATION MANUAL FOR ISUZU D-MAX/MUX

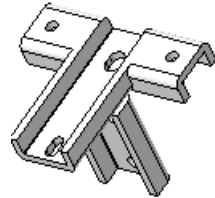
## COMPONENTS LIST



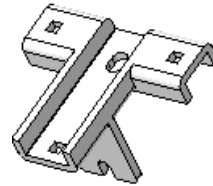
Running board,  
2 PCS



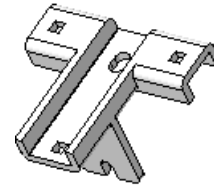
ECU



Bracket connection, rear 2



Bracket connection, middle 2



Bracket connection, front 2



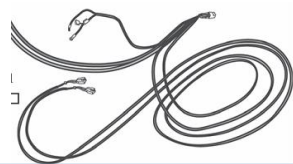
Idler bracket 4



Motor bracket 2



OBD KIT 1 SET



Wire harness: one set for  
motor power and signal



M8\*30 socket cap  
screw 6PCS



N6\*25 socket cap  
screw 12 PCS



M8 nut w conical  
Washer 6 PCS



Plastic line 1



U shape washer  
10pcs



M8 washer  
6 PCS



M6 spring  
washer 12PCS



M6 washer 12  
PCS



Tie wire  
20 PCS

### Screw package

# INSTALLATION MANUAL FOR ISUZU D-MAX/MUX

## 1. Install ECU, OBD and wiring



1) take out fuse



2) connect power wire to battery: red one with fuse is positive.



3) Caution: **Tighten battery screw very tight! If loose, may get damage to the**



4) The left motor line is as picture position to the leaf plate



5) The left motor line as above to the chassis



6) The right motor line as above to the right side, same way as left.

# INSTALLATION MANUAL FOR ISUZU D-MAX/MUX



7) three lines from above position to co-drive position: positive line, another terminal of left and right motor line.



8) another terminal line of left and right motor line as above picture.



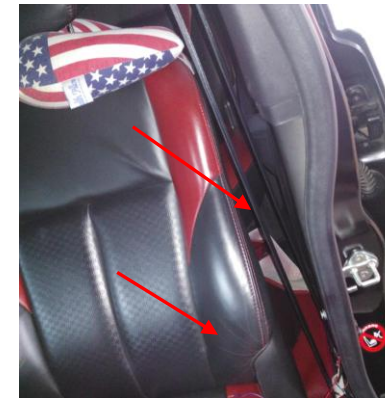
9) insert those 3 lines connector and with tape protected. **Connector inside th car to anti the water!**



10) The ECU is fixed as above



11) get signal from door switch



12) disassemble the inside cover



# INSTALLATION MANUAL FOR ISUZU D-MAX/MUX

---



12) Pull out the original connector and insert is with provided one and recover it. 4 doors as same way.

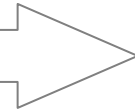


13) lines as above to ECU connector

13 ) connect the motor connectors and use tape to protect. Connect line with ECU connector. Insert fuse to test if motor swork well.

# INSTALLATION MANUAL FOR ISUZU D-MAX/MUX

2. install connection (the right side, 2 sides in same way to install)

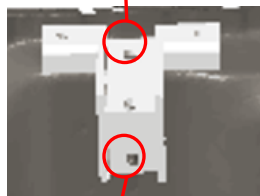
car direction (right) 



Rear connection

2

M8x30 socket cap screw



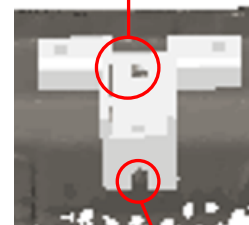
1

M8 nut

Middle connection

4

M8x30 socket cap screw



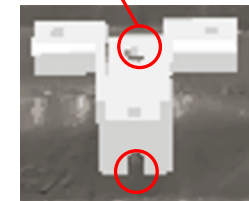
3

M8 nut

Front connection

6

M8x30 socket cap screw



5

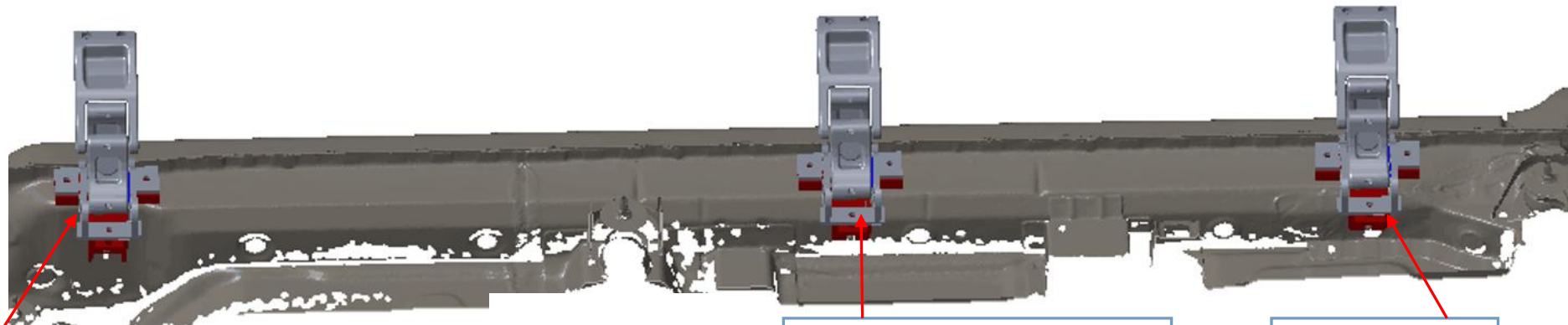
M8 nut

**Tighten all screws !**

# INSTALLATION MANUAL FOR ISUZU D-MAX/MUX

3. install left brackets (the right side, 2 sides in same way to install)

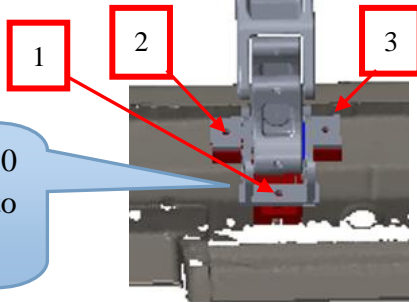
Car direction (right)



RR idler bracket

Right middle motor bracket

RF idler bracket



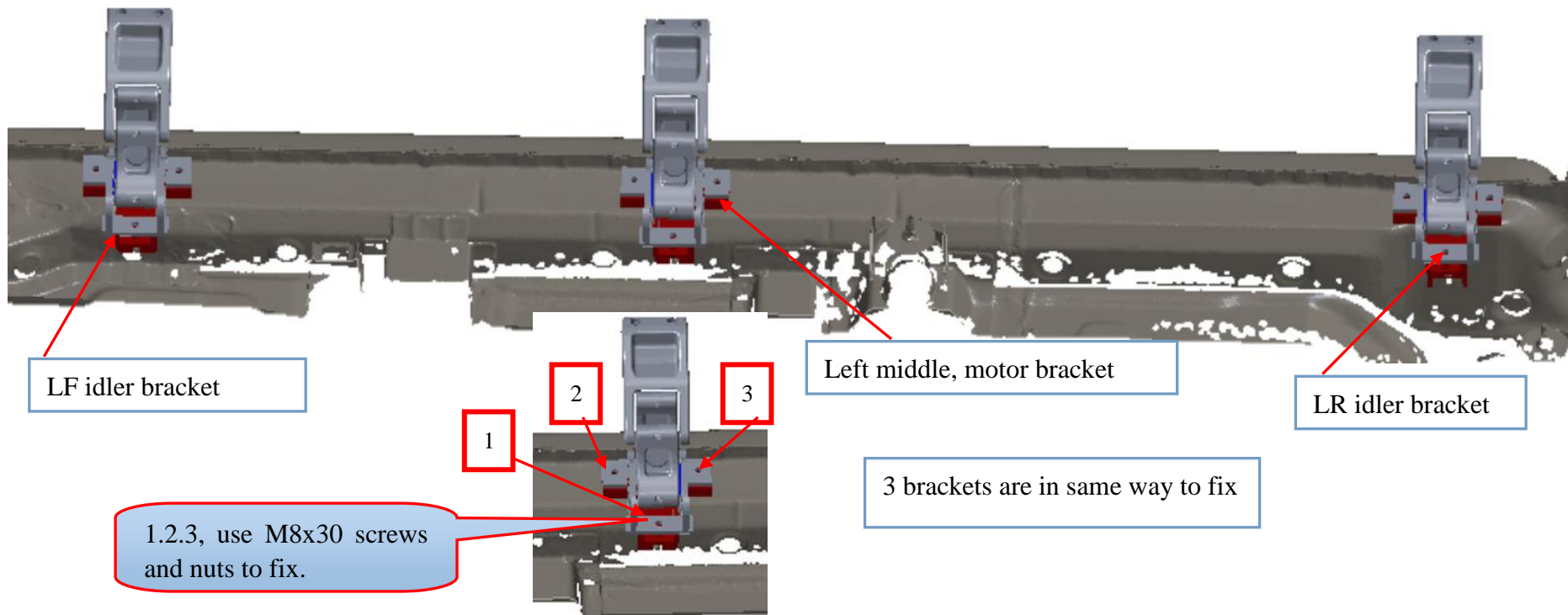
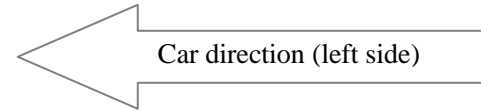
1.2.3, use M8x30 screws and nuts to fix.

3 brackets are in same way to fix

**KEEP ALL BRACKETS SCREW A LITTLE LOOSE, SO THAT BRACKET CAN MOVE WITH RUNNING BOARD!!!**

# INSTALLATION MANUAL FOR ISUZU D-MAX/MUX

- 4.install connection, left side (same as right side)
- 5.install brackets, left side



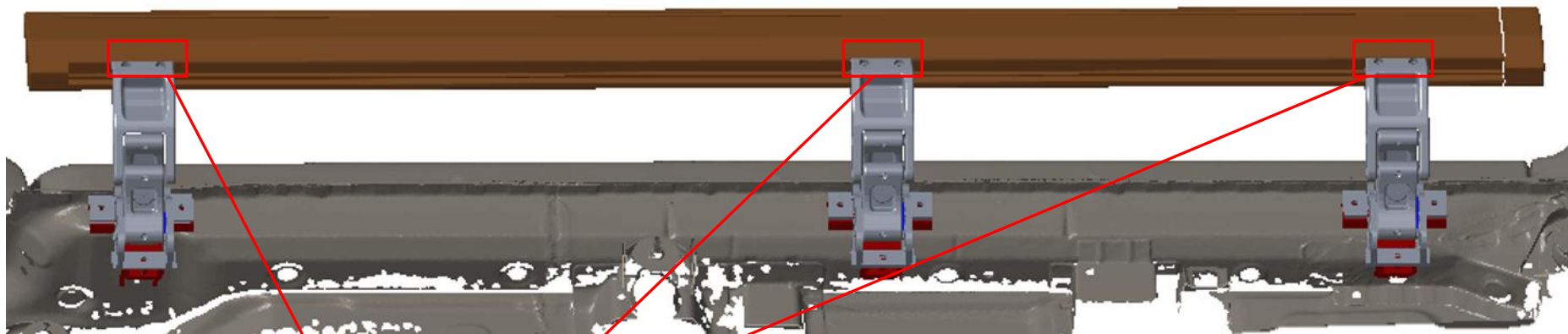
**KEEP ALL BRACKETS SCREW A LITTLE LOOSE, SO THAT BRACKET CAN MOVE WITH RUNNING BOARD!!!**



# INSTALLATION MANUAL FOR ISUZU D-MAX/MUX

---

6. install running board (left and right side are in same way)



Use M6x25 screw and spring washers to fix running board with brackets.

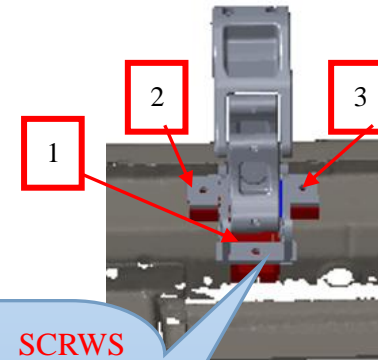
**TIGHTEN SCREWS !**

# INSTALLATION MANUAL FOR ISUZU D-MAX/MUX

## 7. Testing and adjust the balance



Insert fuse again. Then open and close doors to let step work. To assure them up and down freely to adjust position by itself.



**FASTEN ALL THE SCRWS  
(3x6=18) ON THE 6 BRACKETS**

If still not balance, use U shape washer to adjust it.

## INSTALLATION MANUAL FOR ISUZU D-MAX/MUX

---



6, Checking all doors activate, the side step work when doors open and close. Now the installation is finished. Protect all connectors with tap to avoid loose.