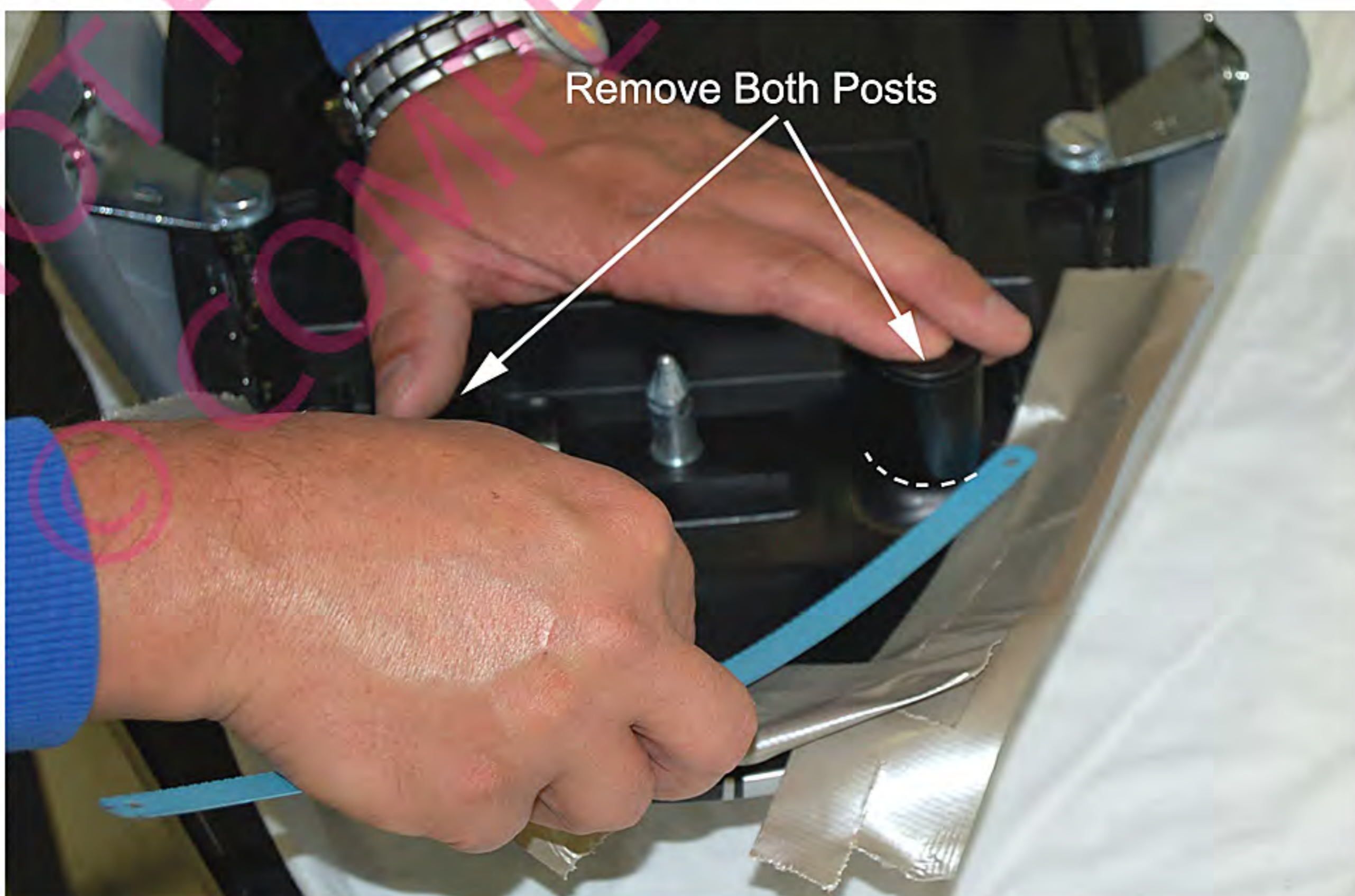
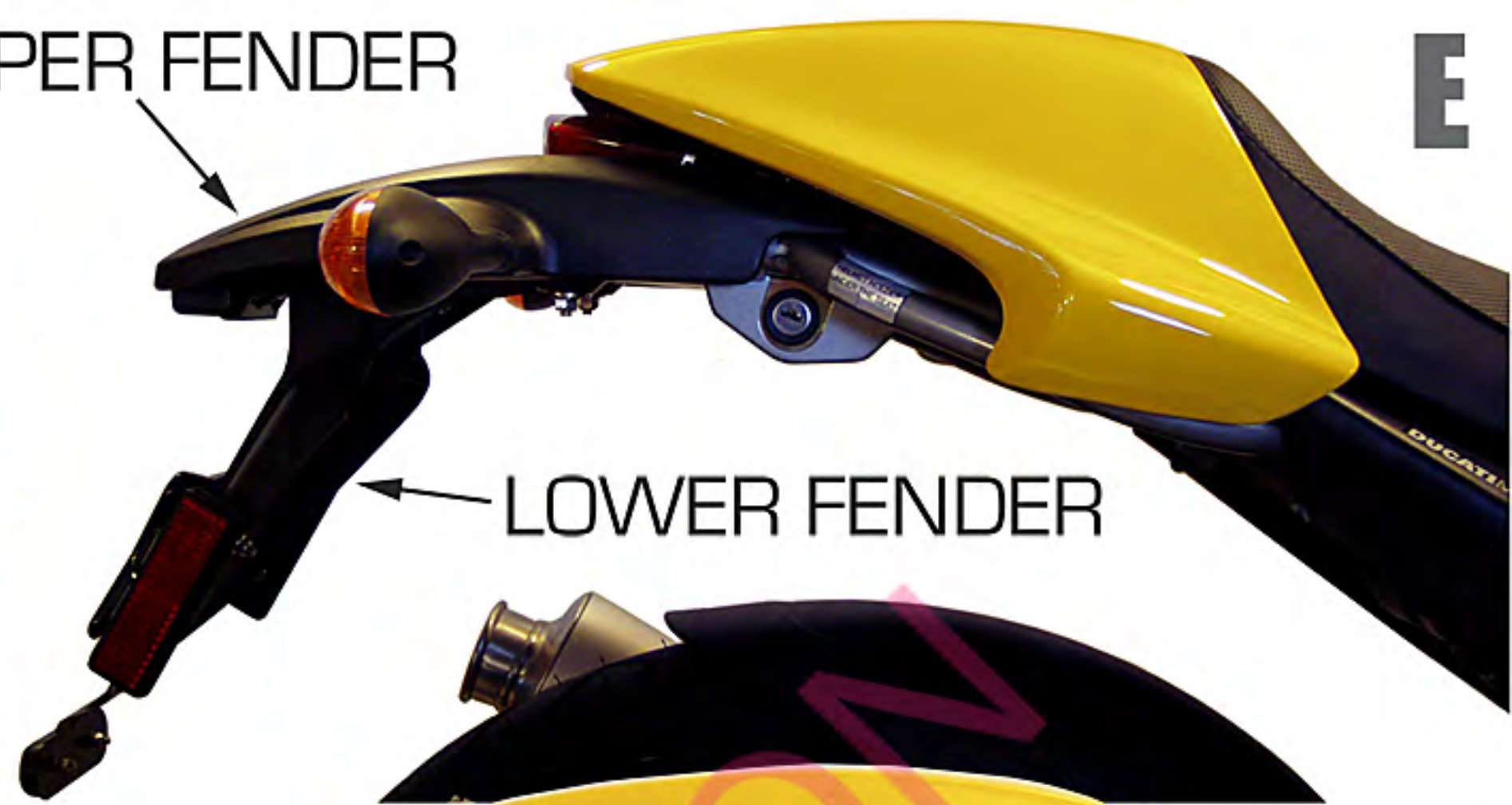
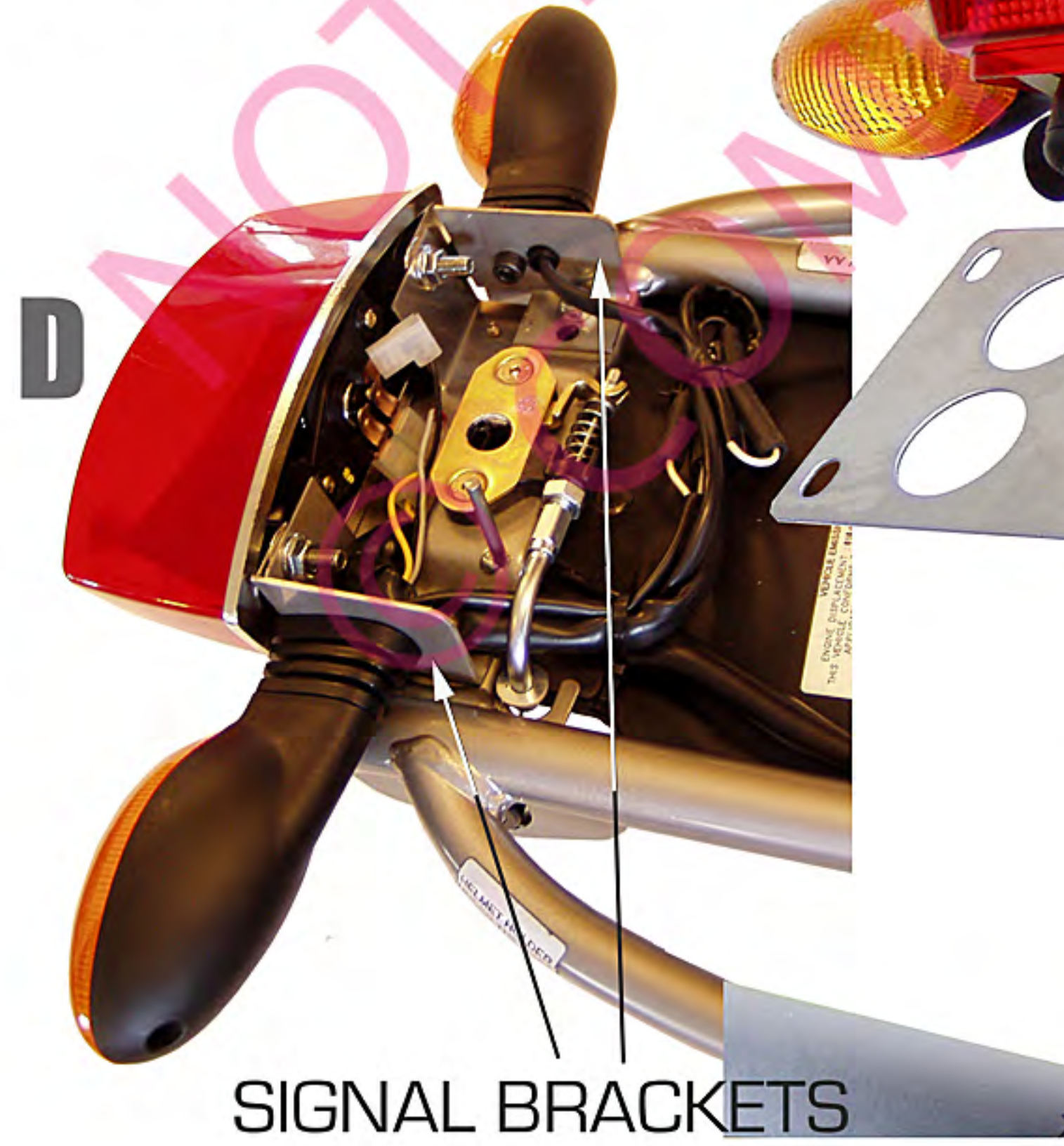


DUCATI MONSTER

- REMOVE:** Seat, lower fender (4 nuts on bottom) **FIG E.**
- UNPLUG:** Wiring to tail light, turn signals, pull license light from socket and let hang (keep track of all wire colors on the back of this page as colors vary from bike to bike).
- REMOVE:** Upper fender by lifting up. Then remove tail light (2 nuts off back) **FIG E.**
- CUT:** Frame (6 1/2" from end) **FIG A** (hacksaw works fine).
- REMOVE:** 2 bolts from cross brace **FIG C.**
- REROUTE:** Wires (tuck under seat latch cable then run license light back down through oval shaped opening) **FIG B.**
- MOUNT:** Main pan w/longer bolts supplied (make sure pan is straight and centered before tightening) **FIG C.**
- MOUNT:** License light and insert bulb (pull excess wire back into storage area) **FIG C.**
- MOUNT:** Tail light to tail light mounts, **FIGS C & D.**
- MOUNT:** Turn signal brackets to bolt ends on cross brace (use hole which allows bracket to be flush w/tail light mount on each side). Align before securing w/loc-nut **FIG D.**
- MOUNT:** Turn signals w/stock allen bolt (make sure drain holes are facing down). Plug in wiring.
- CHECK:** All lighting.
- ARRANGE:** Wires so as not to interfere w/seat latch, zip tie as desired **FIG D.**
- REPLACE:** Seat. ***Note*** Some models may have seat post which require removal. See photo below.
- Parts List:** Main pan/tail light mount, 2-turn signal brackets, 2-6x20bolts, 4-6x10 allen bolts, 6-6mm nuts, 4-washers, 2- small zip ties, 2-lrg plastic plugs.

Seat Post removal required on some models.





MONSTER DUCATI



A

B

C

D

E

F

G

UPPER FENDER

LOWER FENDER

CUT HERE

TAIL LIGHT MOUNT

CROSS BRACE

SIGNAL BRACKETS

MAIN PAN