

NAUTILUS OTTOMAN

Specification Sheet

INDIAN OCEAN

INSPIRATIONAL OUTDOOR FURNITURE

PRODUCT INFORMATION

Product Dimensions

90.5cm 90.5cm 40cm 13.5kg

Packed Dimensions

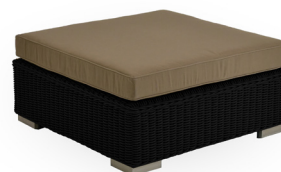
95cm 95cm 36cm 19kg 0.32m³

WIDTH DEPTH HEIGHT WEIGHT CBM

This item is carefully packed one per box.



All Weather Rope
in Taupe and Slate
cushions.



All Weather Rope
in Black and Taupe
cushions.

MATERIALS

FRAME



black



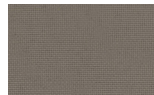
taupe

All Weather Rope combines texture with technology to give a natural feel and substantial practical strength. The material is water repellent and UV resistant.

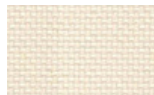
CUSHIONS



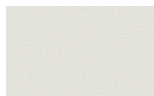
slate



taupe



natural



white

100% Olefin Fabric, specially designed for the outdoors, whilst ensuring a natural feel. Water repellent, UV resistant with quick drying foam inners.

PROTECTIVE COVER



dove grey

Protective Cover custom made for item, which is designed to be quick drying, water repellent and breathable.