

# MARINA LOUNGE CHAIR

Specification Sheet

# INDIAN OCEAN

INSPIRATIONAL OUTDOOR FURNITURE

## PRODUCT INFORMATION

Product Dimensions

80cm 80cm 77cm 14.5kg

Packed Dimensions

92.5cm	92.5cm	68cm	33kg	0.58m <sup>3</sup>
94cm	94cm	68cm	34.5kg	0.60m <sup>3</sup> (Teak)
WIDTH	DEPTH	HEIGHT	WEIGHT	CBM

This item is carefully packed one per box.



Espresso Rope with Bronze Powder-coating and Oyster cushions.



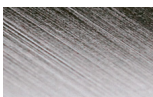
Black Rope with Anthracite Powder-coating and Charcoal cushions.



Taupe Rope with EP Stainless Steel and Sandstone cushions.

## MATERIALS

### FRAME



ep stainless steel



bronze



anthracite



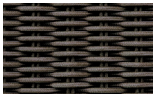
pearl



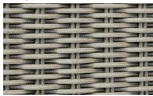
black



blue



espresso



taupe



teak

#### Electro-polished Stainless Steel

304 Stainless Steel with a micro smooth reflective surface.

#### Powder-coated Stainless Steel

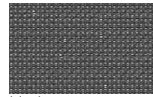
304 Stainless Steel with high quality powder-coating applied.

**All Weather Rope** combines texture with technology to give a natural feel and substantial practical strength. The material is water repellent and UV resistant.

#### Teak

FSC Premium 'Grade A' is naturally hard wearing and long lasting.

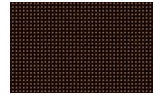
### SLING



black



blue



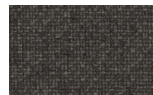
bronze



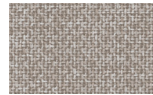
cappuccino

**Batyline**® Exceptional strength and durability properties to prevent against tearing. Polyester fibre is PVC coated and then woven creating a soft touch mesh with very quick drying capabilities. 100% recyclable.

### CUSHIONS



charcoal



oyster



sandstone



libertino tamarindo

**100% Olefin Fabric**, specially designed for the outdoors, whilst ensuring a natural feel. Water repellent, UV resistant with quick drying foam inners.

**Velvet** specifically designed for the outdoors, durable, quick drying and luxurious to touch. Limited Edition collaboration with Dedar Milano.

### PROTECTIVE COVER



dove grey

**Protective Cover** custom made for item, which is designed to be quick drying, water repellent and breathable.