

MARINA CURVE CHAIR

Specification Sheet

INDIAN OCEAN
INSPIRATIONAL OUTDOOR FURNITURE



Black Rope with Anthracite Powder-coating and Charcoal cushion.

PRODUCT INFORMATION

Product Dimensions

62cm 57cm 77cm 11.2kg

Packed Dimensions

67cm 67cm 85cm 32kg 0.38m³

WIDTH DEPTH HEIGHT WEIGHT CBM

This item is carefully packed two per box.



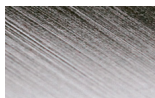
Taupe Rope with EP Stainless Steel and Sandstone cushion.



Blue Rope with EP Stainless Steel and Oyster cushion.

MATERIALS

FRAME



ep stainless steel



bronze



anthracite



pearl



black



blue



espresso



taupe

Electro-polished Stainless Steel

304 Stainless Steel with a micro smooth reflective surface.

Powder-coated Stainless Steel

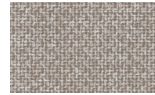
304 Stainless Steel with high quality powder-coating applied.

All Weather Rope combines texture with technology to give a natural feel and substantial practical strength. The material is water repellent and UV resistant.

CUSHIONS



charcoal



oyster



sandstone

PROTECTIVE COVER



dove grey

100% Olefin Fabric, specially designed for the outdoors, whilst ensuring a natural feel. Water repellent, UV resistant with quick drying foam inners.

Protective Cover custom made for item, which is designed to be quick drying, water repellent and breathable.