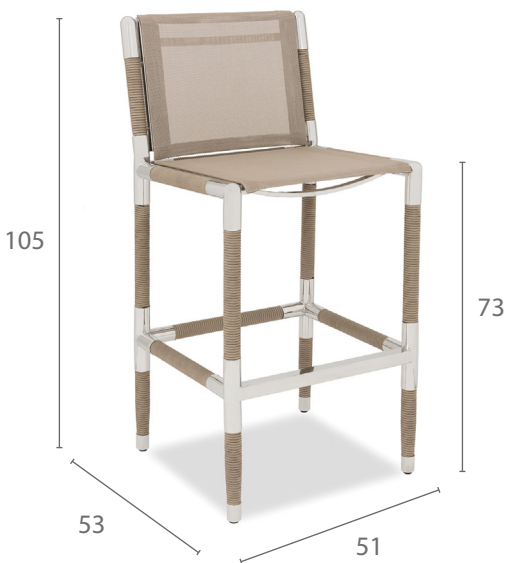


# MARINA BAR CHAIR

Specification Sheet

**INDIAN OCEAN**  
INSPIRATIONAL OUTDOOR FURNITURE



Taupe Rope with EP Stainless Steel and Cappuccino Batyline.

## PRODUCT INFORMATION

Product Dimensions

51cm 53cm 105cm 21.4kg

Packed Dimensions

58cm 71cm 151cm 28.5kg 0.62m<sup>3</sup>

WIDTH DEPTH HEIGHT WEIGHT CBM

This item is carefully packed two per box.



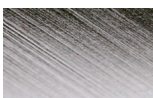
Teak with EP Stainless Steel and Cappuccino Batyline.



Black Rope with Anthracite Powder-coating and Black Batyline.

## MATERIALS

### FRAME



ep stainless steel

#### Electro-polished Stainless Steel

304 Stainless Steel with a micro smooth reflective surface.



bronze

#### Powder-coated Stainless Steel

304 Stainless Steel with high quality powder-coating applied.



anthracite

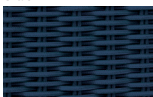


pearl



black

**All Weather Rope** combines texture with technology to give a natural feel and substantial practical strength. The material is water repellent and UV resistant.



blue



espresso



taupe

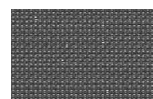


teak

#### Teak

FSC Premium 'Grade A' is naturally hard wearing and long lasting.

### SLING

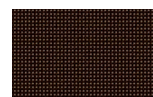


black

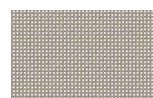
**Batyline\*** Exceptional strength and durability properties to prevent against tearing. Polyester fibre is PVC coated and then woven creating a soft touch mesh with very quick drying capabilities. 100% recyclable.



blue



bronze



cappuccino

### PROTECTIVE COVER



dove grey

**Protective cover** custom made for item, which is designed to be quick drying, water repellent and breathable.