

# MARINA 75<sup>CM</sup> DINING TABLE

Specification Sheet

**INDIAN OCEAN**  
INSPIRATIONAL OUTDOOR FURNITURE

## PRODUCT INFORMATION

Product Dimensions

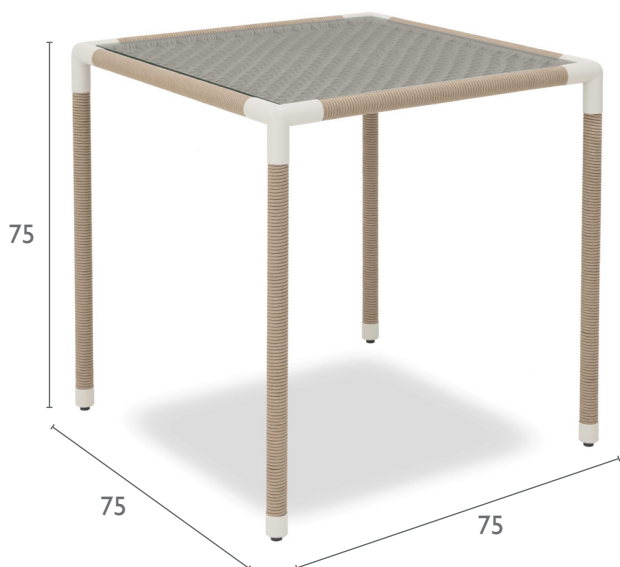
75cm 75cm 75cm 11.5kg

Packed Dimensions

2.5cm 82.5cm 81cm 16kg 0.55m<sup>3</sup>

WIDTH DEPTH HEIGHT WEIGHT CBM

This item is carefully packed one per box.



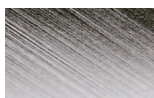
Taupe Rope with Pearl  
Powder-coating and Glass.



Black Rope with Anthracite  
Powder-coating and Glass.

## MATERIALS

### FRAME



ep stainless steel

#### Electro-polished Stainless Steel

304 Stainless Steel with a micro smooth reflective surface.



bronze

#### Powder-coated Stainless Steel

304 Stainless Steel with high quality powder-coating applied.



anthracite



pearl



black

**All Weather Rope** combines texture with technology to give a natural feel and substantial practical strength. The material is water repellent and UV resistant.



blue



espresso



taupe

### PROTECTIVE COVER



dove grey

**Protective Cover** custom made for item, which is designed to be quick drying, water repellent and breathable.