

# MARINA 3 SEAT SOFA

Specification Sheet

**INDIAN OCEAN**  
INSPIRATIONAL OUTDOOR FURNITURE

## PRODUCT INFORMATION

Product Dimensions

80cm 220cm 77cm 29kg

Packed Dimensions

93cm 232cm 67.5cm 64kg 1.46m<sup>3</sup>

WIDTH DEPTH HEIGHT WEIGHT CBM

This item is carefully packed one per box.



Taupe Rope with EP Stainless Steel with Sandstone cushions



Teak with EP Stainless Steel with Oyster cushions



Black Rope with Anthracite Powder-coating and Charcoal cushions

## MATERIALS

### FRAME



ep stainless steel



bronze



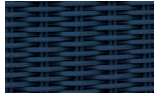
anthracite



pearl



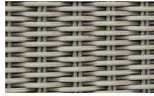
black



blue



espresso



taupe



teak

### Electro-polished Stainless Steel

304 Stainless Steel with a micro smooth reflective surface.

### Powder-coated Stainless Steel

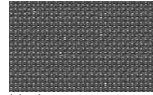
304 Stainless Steel with high quality powder-coating applied.

**All Weather Rope** combines texture with technology to give a natural feel and substantial practical strength. The material is water repellent and UV resistant.

### Teak

FSC Premium 'Grade A' is naturally hard wearing and long lasting.

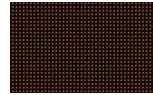
### SLING



black



blue



bronze

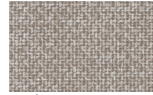


cappuccino

### CUSHIONS



charcoal



oyster



sandstone



libertino tamarindo



dove grey

**Batyline\*** Exceptional strength and durability properties to prevent against tearing. Polyester fibre is PVC coated and then woven creating a soft touch mesh with very quick drying capabilities. 100% recyclable.

**100% Olefin Fabric**, specially designed for the outdoors, whilst ensuring a natural feel. Water repellent, UV resistant with quick drying foam inners.

**Velvet** specifically designed for the outdoors, durable, quick drying and luxurious to touch. Limited Edition collaboration with Dedar Milano.

### PROTECTIVE COVER

**Protective cover** custom made for item, which is designed to be quick drying, water repellent and breathable.