

# MARINA 2 SEAT SOFA

Specification Sheet

# INDIAN OCEAN

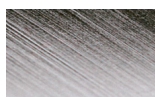
INSPIRATIONAL OUTDOOR FURNITURE



Espresso Rope with Bronze Powder-coating with Sandstone cushions

## MATERIALS

### FRAME



ep stainless steel



bronze



anthracite



pearl



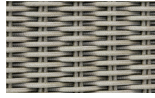
black



blue



espresso



taupe



teak

#### Electro-polished Stainless Steel

304 Stainless Steel with a micro smooth reflective surface.

#### Powder-coated Stainless Steel

304 Stainless Steel with high quality powder-coating applied.

**All Weather Rope** combines texture with technology to give a natural feel and substantial practical strength. The material is water repellent and UV resistant.

#### Teak

FSC Premium 'Grade A' is naturally hard wearing and long lasting.

## PRODUCT INFORMATION

### Product Dimensions

80cm 150cm 77cm 20kg

### Packed Dimensions

93.5cm	162cm	67cm	48kg	1.01m <sup>3</sup>
94cm	163cm	68cm	51kg	1.04m <sup>3</sup> (Teak)
WIDTH	DEPTH	HEIGHT	WEIGHT	CBM

This item is carefully packed one per box.



Black Rope with Anthracite Powder-coating with Oyster cushions



Taupe Rope with EP Stainless Steel with Charcoal cushions

### SLING



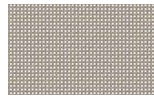
black



blue



bronze



cappuccino

**Batyline**® Exceptional strength and durability properties to prevent against tearing. Polyester fibre is PVC coated and then woven creating a soft touch mesh with very quick drying capabilities. 100% recyclable.

### CUSHIONS



charcoal



oyster



sandstone



libertino tamarindo

**100% Olefin Fabric**, specially designed for the outdoors, whilst ensuring a natural feel. Water repellent, UV resistant with quick drying foam inners.

**Velvet** specifically designed for the outdoors, durable, quick drying and luxurious to touch. Limited Edition collaboration with Dedar Milano.

### PROTECTIVE COVER



dove grey

**Protective Cover** custom made for item, which is designed to be quick drying, water repellent and breathable.