

MARINA 280^{CM} DINING TABLE

Specification Sheet

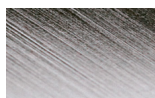
INDIAN OCEAN
INSPIRATIONAL OUTDOOR FURNITURE



Black Rope with Anthracite Powder-coating and Glass.

MATERIALS

FRAME



ep stainless steel



bronze



anthracite



pearl



black



blue



espresso



taupe

Electro-polished Stainless Steel

304 Stainless Steel with a micro smooth reflective surface.

Powder-coated Stainless Steel

304 Stainless Steel with high quality powder-coating applied.

All Weather Rope combines texture with technology to give a natural feel and substantial practical strength. The material is water repellent and UV resistant.

PRODUCT INFORMATION

Product Dimensions

90cm 280cm 75cm 86.4kg

Packed Dimensions

99cm 289cm 81cm 124.2kg 2.49m³

WIDTH DEPTH HEIGHT WEIGHT CBM

This item is carefully packed one per box.



Blue Rope with EP Satinless Steel and Glass top.



Taupe Rope with Pearl Powder-coating and Glass top.

PROTECTIVE COVER



dove grey

Protective Cover custom made for item, which is designed to be quick drying, water repellent and breathable.