

# MARINA 210<sup>CM</sup> DINING TABLE

Specification Sheet

**INDIAN OCEAN**  
INSPIRATIONAL OUTDOOR FURNITURE

## PRODUCT INFORMATION

Product Dimensions

90cm 210cm 75cm 51.3kg

Packed Dimensions

99cm 218cm 81cm 80.4kg 1.87m<sup>3</sup>  
99cm 218cm 81cm 77.4kg 1.87m<sup>3</sup> (Teak)

WIDTH DEPTH HEIGHT WEIGHT CBM

This item is carefully packed one per box.



Taupe Rope with EP  
Satinless Steel and  
Glass top.



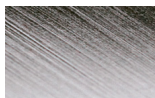
Black Rope with Anthracite  
Powder-coating and Glass top.



Blue Rope with EP Satinless  
Steel and Glass top.

## MATERIALS

### FRAME



ep stainless steel

#### Electro-polished Stainless Steel

304 Stainless Steel with a micro smooth reflective surface.



bronze

#### Powder-coated Stainless Steel

304 Stainless Steel with high quality powder-coating applied.



anthracite



pearl



black

**All Weather Rope** combines texture with technology to give a natural feel and substantial practical strength. The material is water repellent and UV resistant.



blue



espresso



taupe

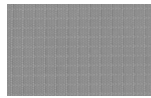


teak

#### Teak

FSC Premium 'Grade A' is naturally hard wearing and long lasting.

### PROTECTIVE COVER



dove grey

**Protective Cover** custom made for item, which is designed to be quick drying, water repellent and breathable.