

# LATITUDE 45<sup>CM</sup> COFFEE TABLE

Specification Sheet

**INDIAN OCEAN**  
INSPIRATIONAL OUTDOOR FURNITURE

## PRODUCT INFORMATION

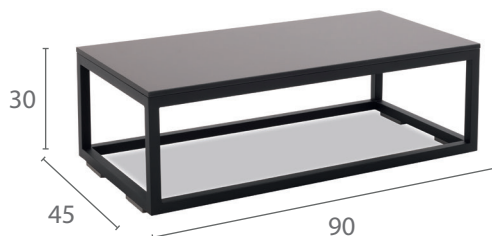
Product Dimensions

90cm 45cm 30cm 13.5kg

Packed Dimensions

96cm	51cm	34cm	16.5kg	0.17m <sup>3</sup>
96cm	51cm	34cm	16.5kg	0.17m <sup>3</sup> (teak)
WIDTH	DEPTH	HEIGHT	WEIGHT	CBM

This item is carefully packed one per box.



Teak top with Brushed Stainless Steel



Grey HPL top with Brushed Stainless Steel

Grey HPL top with Anthracite Powder-coating

## MATERIALS

### FRAME



anthracite

**Powder-coated Stainless Steel**  
304 Stainless Steel with high quality powder-coating applied.



brushed stainless steel

**Brushed Stainless Steel**  
304 Stainless Steel with a micro smooth brushed surface.

### TABLE TOP



teak

**Teak**  
FSC Premium 'Grade A' is naturally hard wearing and long lasting.



grey

**HPL (high pressure laminate)**  
is a synthetic product making it durable and water resistant which is suitable for outdoor use.

### PROTECTIVE COVER



dove grey

**Protective Cover** custom made for item, which is designed to be quick drying, water repellent and breathable.