

LATITUDE 120^{CM} COFFEE TABLE

Specification Sheet

INDIAN OCEAN
INSPIRATIONAL OUTDOOR FURNITURE

PRODUCT INFORMATION

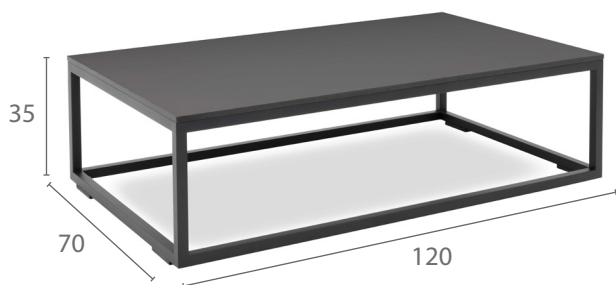
Product Dimensions

70cm 120cm 35cm 22kg

Packed Dimensions

73cm	123cm	38cm	27kg	0.36m ³
72cm	122cm	38cm	26kg	0.32m ³ (teak)
WIDTH	DEPTH	HEIGHT	WEIGHT	CBM

This item is carefully packed one per box.



Grey HPL top with Brushed Stainless Steel



Teak top with Brushed Stainless Steel

Grey HPL top with Anthracite Powder-coating

MATERIALS

FRAME



anthracite

Powder-coated Stainless Steel
304 Stainless Steel with high quality powder-coating applied.



brushed stainless steel

Brushed Stainless Steel
304 Stainless Steel with a micro smooth brushed surface.

TABLE TOP



teak

Teak
FSC Premium 'Grade A' is naturally hard wearing and long lasting.



grey

HPL (high pressure laminate)
is a synthetic product making it durable and water resistant which is suitable for outdoor use.

PROTECTIVE COVER



dove grey

Protective Cover custom made for item, which is designed to be quick drying, water repellent and breathable.