

# SULTAN SWING BED

Specification Sheet

**INDIAN OCEAN**  
INSPIRATIONAL OUTDOOR FURNITURE



## PRODUCT INFORMATION

Product Dimensions

234cm 160cm 186cm 188kg

Packed Dimensions

187cm 139cm 15 cm 60kg 0.39m<sup>3</sup>

234cm 40cm 21cm 114kg 0.39m<sup>3</sup>

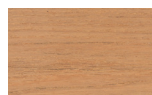
199cm 114cm 12cm 82kg 0.39m<sup>3</sup>

WIDTH DEPTH HEIGHT WEIGHT CBM

This item is carefully packed three per box.

## MATERIALS

Frame

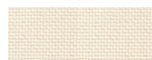


teak

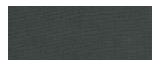
**Teak**

Premium 'Grade A' teak which is naturally hard-wearing and long lasting.

## CUSHION OPTIONS



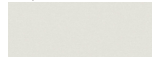
natural



slate



taupe



white

**Seat & Back Cushions**

High performance 100% Olefin fabric specially designed for the outdoors, whilst ensuring a natural feel. Water-repellent, UV resistant with quick drying foam interiors.

## PRODUCT CODES

Frame	Code	Cushion	Code
teak	434,1038+1040	natural	14295
		slate	13689
		taupe	14465
		white	7575

For care information visit  
[www.indian-ocean.co.uk/care-instructions/](http://www.indian-ocean.co.uk/care-instructions/)