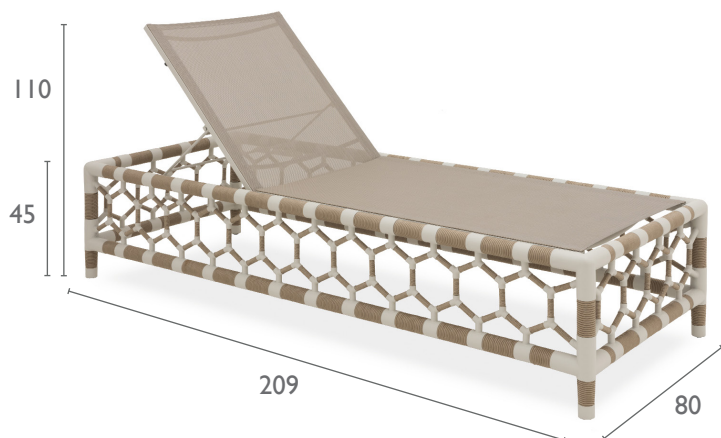


# OLYMPIA LOUNGER

Specification Sheet



# INDIAN OCEAN

INSPIRATIONAL OUTDOOR FURNITURE

## PRODUCT INFORMATION

Product Dimensions

209cm 80cm 45cm 43.5kg

Packed Dimensions

218cm 88cm 49cm 56.7kg 0.94m<sup>3</sup>

WIDTH DEPTH HEIGHT WEIGHT CBM

This item is carefully packed one per box.

## MATERIALS

Frame



black



taupe



anthracite

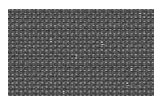


pearl

### All Weather Rope

Combines texture with technology to give a natural feel and substantial practical strength. The material is water-repellent and UV proof.

**Powder Coated** Stainless steel, the colour is applied electrostatically and is then cured under heat.



black



taupe

**Batyline®** Polyester fibre is PVC coated and then woven. The fibres are then melted together to create an exceptionally form fast, stretch and tear resistant quick drying fabric.



dove grey

### Protective Cover

Custom made for item, which is designed to be water repellent and breathable. The fabric is quick drying and easy to fold away for storage.

## PRODUCT CODES

Frame/Rope	Code	Cover	Code
anthracite / black *	12387	dove grey	12576
pearl / taupe *	12386		

\* made to order

For care information visit  
[www.indian-ocean.co.uk/care-instructions/](http://www.indian-ocean.co.uk/care-instructions/)