

# DAVOS ARMCHAIR

Specification Sheet

**INDIAN OCEAN**  
INSPIRATIONAL OUTDOOR FURNITURE

## PRODUCT INFORMATION

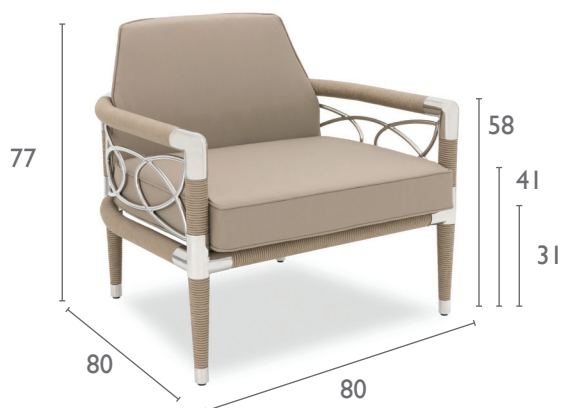
Product Dimensions

80cm 80cm 58cm 15.7kg

Packed Dimensions

93cm 93cm 67cm 33.5kg 0.58m<sup>3</sup>  
WIDTH DEPTH HEIGHT WEIGHT CBM

This item is carefully packed one per box.



Taupe Rope and EP Stainless Steel with Taupe cushions.

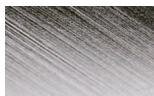


Black Rope and EP Stainless Steel with White cushions.

Blue Rope and EP Stainless Steel with Taupe cushions.

## MATERIALS

### FRAME



ep stainless steel



black



blue



taupe

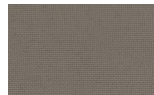
**Electro-polished Stainless Steel**  
304 Stainless Steel with a micro smooth reflective surface.

**All Weather Rope** combines texture with technology to give a natural feel and substantial practical strength. The material is water repellent and UV resistant.

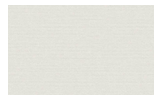
### CUSHIONS



slate



taupe



white

**100% Olefin Fabric**, specially designed for the outdoors, whilst ensuring a natural feel. Water repellent, UV resistant with quick drying foam inners.

### PROTECTIVE COVER



dove grey

**Protective Cover** custom made for item, which is designed to be quick drying, water repellent and breathable.