

CUBA STOOL

Specification Sheet

INDIAN OCEAN

INSPIRATIONAL OUTDOOR FURNITURE

PRODUCT INFORMATION

Product Dimensions

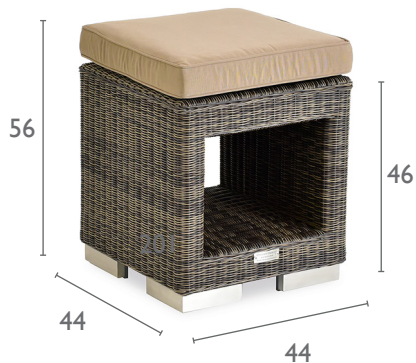
44cm 44cm 56cm 10.3kg

Packed Dimensions

48cm 48cm 49cm 11.8kg 0.11m³

WIDTH DEPTH HEIGHT WEIGHT CBM

This item is carefully packed one per box.



All Weather Weave
in Mocha with Taupe
cushions.

MATERIALS

FRAME



mocha



stone

All Weather Weave is extremely durable, soft to touch, tear resistant and quick drying. The material is water-repellent and UV resistant.

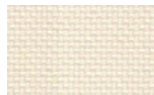
CUSHIONS



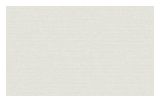
slate



taupe



natural



white

100% Olefin Fabric, specially designed for the outdoors, whilst ensuring a natural feel. Water repellent, UV resistant with quick drying foam inners.

PROTECTIVE COVER



dove grey

Protective Cover custom made for item, which is designed to be quick drying, water repellent and breathable.