

CRUISE LOUNGE CHAIR

Specification Sheet

INDIAN OCEAN
INSPIRATIONAL OUTDOOR FURNITURE

PRODUCT INFORMATION

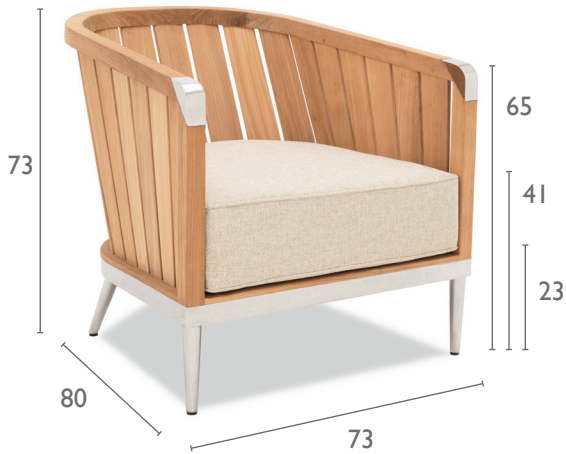
Product Dimensions

73cm 80cm 73cm 18kg

Packed Dimensions

85.5cm	93cm	83cm	42kg	0.66m ³
WIDTH	DEPTH	HEIGHT	WEIGHT	CBM

This item is carefully packed one per box.



Teak with EP Stainless Steel and Sandstone cushions.

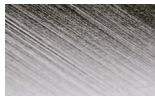


Teak with EP Stainless Steel and Charcoal cushions.

Teak with EP Stainless Steel and Oyster cushions.

MATERIALS

FRAME



ep stainless steel

Electro-polished Stainless Steel
304 Stainless Steel with a micro smooth reflective surface.



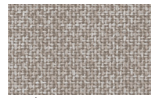
teak

Teak
FSC Premium 'Grade A' is naturally hard wearing and long lasting.

CUSHIONS



charcoal



oyster



sandstone

100% Olefin Fabric, specially designed for the outdoors, whilst ensuring a natural feel. Water repellent, UV resistant with quick drying foam inners.

PROTECTIVE COVER



dove grey

Protective Cover custom made for item, which is designed to be quick drying, water repellent and breathable.