

COVE CORNER MODULE

Specification Sheet

INDIAN OCEAN
INSPIRATIONAL OUTDOOR FURNITURE

PRODUCT INFORMATION

Product Dimensions

79cm 79cm 77cm 18.4kg

Packed Dimensions

83cm 83.5cm 81.5cm 34kg 0.56m³

WIDTH DEPTH HEIGHT WEIGHT CBM

This item is carefully packed one per box.



Teak with Taupe Rope and Taupe cushions.



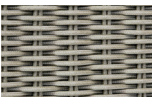
Teak with Taupe Rope and Slate cushions.



Teak with Taupe Rope and White cushions.

MATERIALS

FRAME



taupe

All Weather Rope combines texture with technology to give a natural feel and substantial practical strength. The material is water-repellent and UV proof.



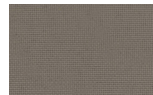
teak

Teak
FSC Premium 'Grade A' is naturally hard wearing and long lasting.

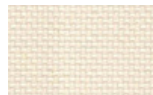
CUSHIONS



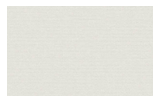
slate



taupe



natural



white

100% Olefin Fabric, specially designed for the outdoors whilst ensuring a natural feel. Water-repellent and UV resistant with quick drying foam inners.

PROTECTIVE COVER



dove grey

Protective Cover custom made for item, which is designed to be quick drying, water repellent and breathable.