

BURNHAM STEAMER CHAIR

Specification Sheet

INDIAN OCEAN
INSPIRATIONAL OUTDOOR FURNITURE



Teak

PRODUCT INFORMATION

Product Dimensions

62cm 163cm 95cm 16.5kg

Packed Dimensions

64.5cm 130cm 18.5cm 20kg 0.16m³

WIDTH DEPTH HEIGHT WEIGHT CBM

This item is carefully packed one per box.



Teak with Natural Cushion



Teak with White Cushion

MATERIALS

FRAME



teak

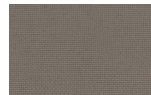
Teak

FSC Premium 'Grade A' is naturally hard wearing and long lasting.

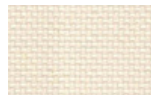
CUSHIONS



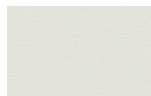
slate



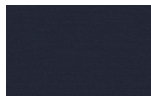
taupe



natural



white



navy

100% Olefin Fabric, specially designed for the outdoors whilst ensuring a natural feel. Water-repellent and UV resistant with quick drying foam inners.

PROTECTIVE COVER



dove grey

Protective Cover custom made for item, which is designed to be quick drying, water repellent and breathable.