



# AUTOSTOP ELIMINATOR®

**Installation Instructions**  
**2015 - 2019 Ford F-150**  
**2018 – 2019 Ford Expedition**



### Notice

This product is an aftermarket accessory and not designed by the vehicle's manufacturer for use on this vehicle. As such, the buyer assumes the risk of damage caused to the vehicle during installation or use of this product.

### Video

An installation video is available on YouTube.com under the title, "2018 Ford F-150 Raptor Autostop Eliminator Installation." This video can also be accessed directly via <https://www.youtube.com/watch?v=BOP3hbDaOUg> .

### Recommended Tools

- A 7mm dual flex-joint ratcheting wrench is the ideal tool, but a 1/4" ratchet with a 7mm socket will work just fine.



- Some of the clips can be seriously tight. If your fingers aren't very strong, you may need a wide, non-marring trim removal tool for prying and some painter's tape to prevent marking the plastic trim.



## Installation

1. Ensure the engine is off and the transmission is in park.
2. Remove any items stored in the dash tray.
3. Starting with the left corner, use your palms for leverage to lift straight up on the corner of the tray, slowly increasing pressure until the clip detaches. This can require significant force...Seriously, these clips are usually tight. To prevent damage to the tray's rear clips, do not allow the tray to lift too high when the front clips release. If needed, use a wide non-marring pry tool with painter's tape to protect any surface the pry tool contacts.



The tray should now look like this:



4. Repeat for the right side of the tray, again using your palms for leverage to ensure the tray does not lift too high as the clip releases.



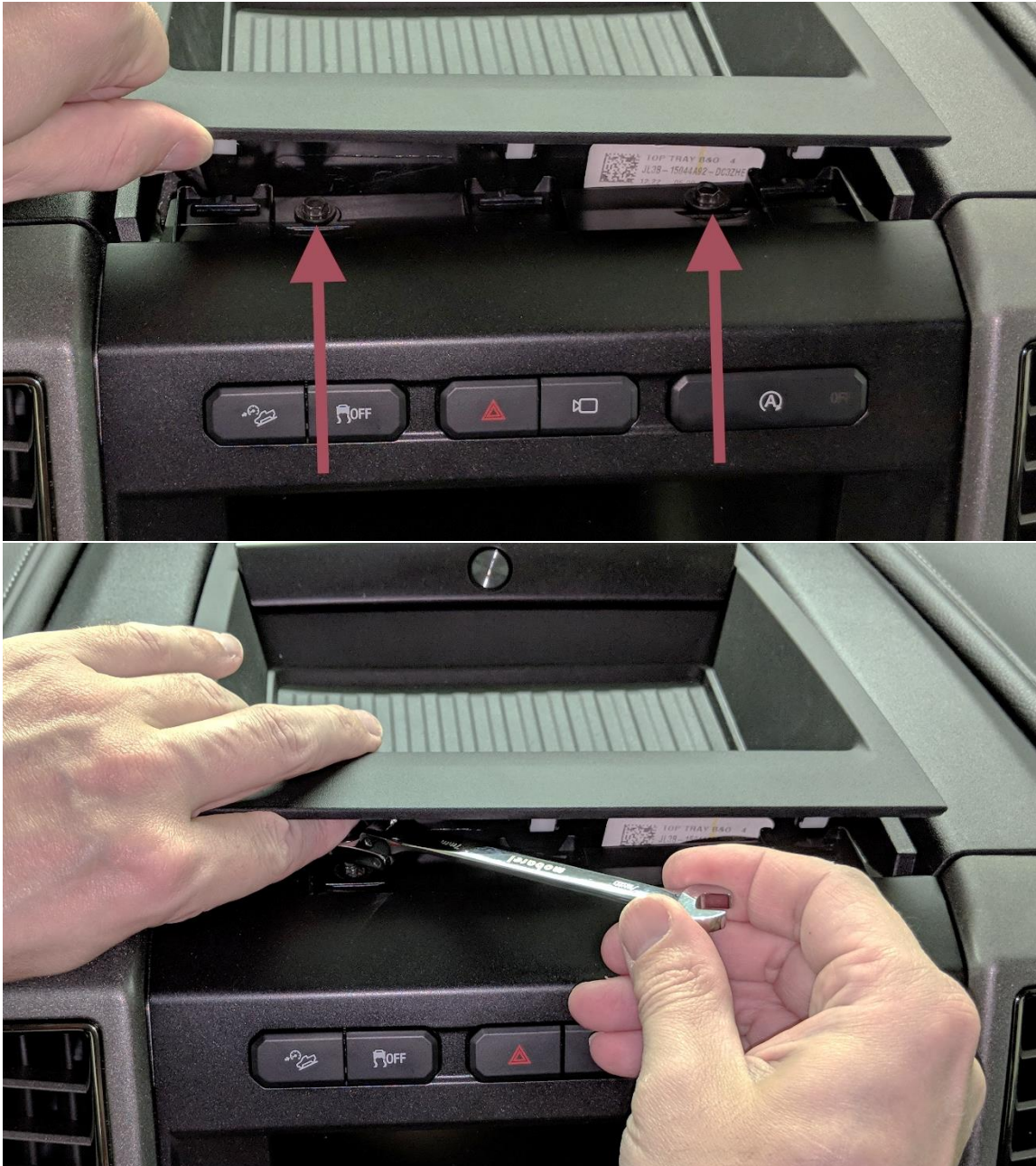
The tray should now look like this:



## Installation Instructions for 2015-2019 Ford F-150 / 2018-2019 Ford Expedition

---

5. Remove the two 7mm screws holding the front bezel. Be careful not to break the tray's rear clips by lifting too high. Also note, the bezel plastic is very soft. Hardened metal tools can easily mar the surface. Be careful and take your time to ensure clearance exists between the plastic and the wrench.



- Using your fingertips and palms, pull straight back on the top-left of the infotainment front bezel, slowly increasing pressure until the clip releases.



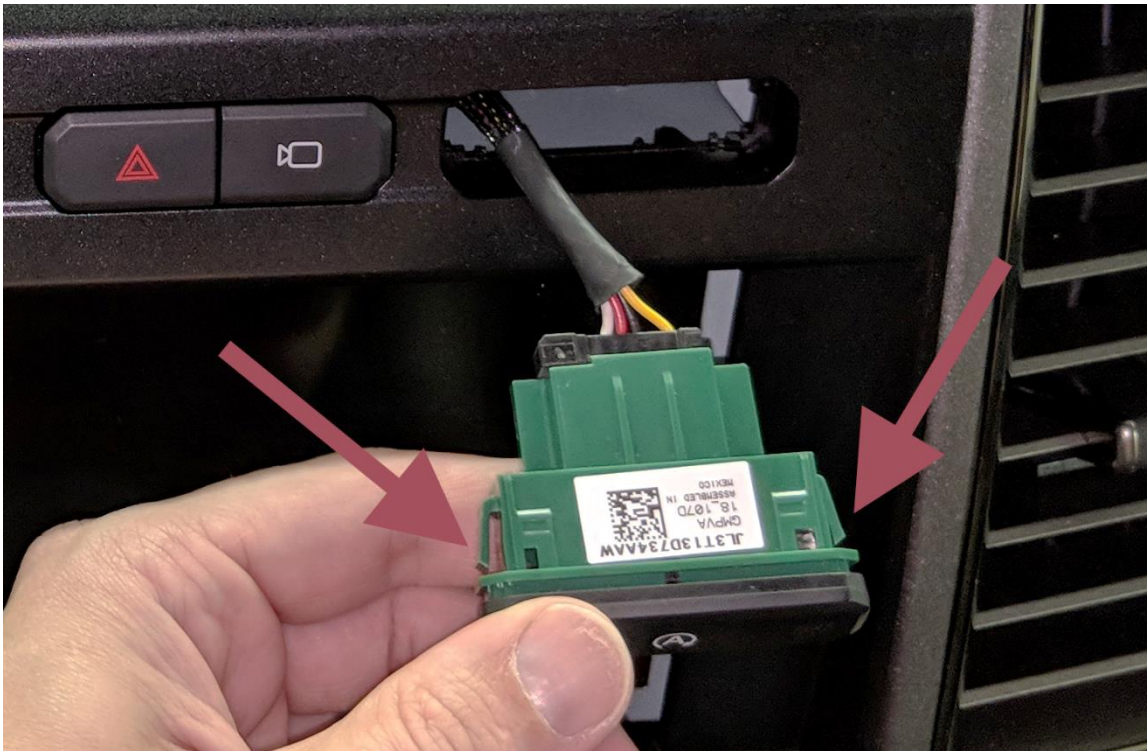
- Being careful not to re-attach the left side; repeat on the right side of the bezel.



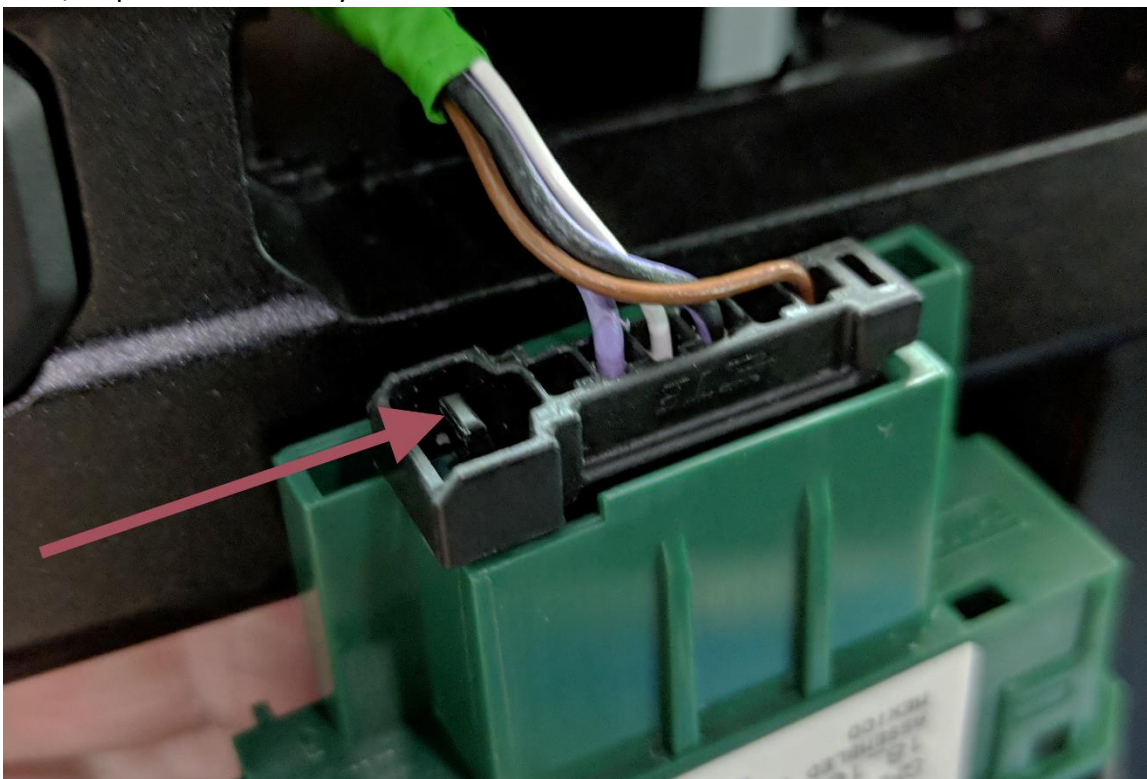
- Without touching the screen, work your way down both sides of the bezel pulling straight back to release the clips. The bezel will release completely from the dash except for the wiring harness connections.



9. Press the side release clips on the backside of the auto start/stop switch assembly to remove it from the bezel. (The switch assembly may appear different between models, but the steps are the same.)



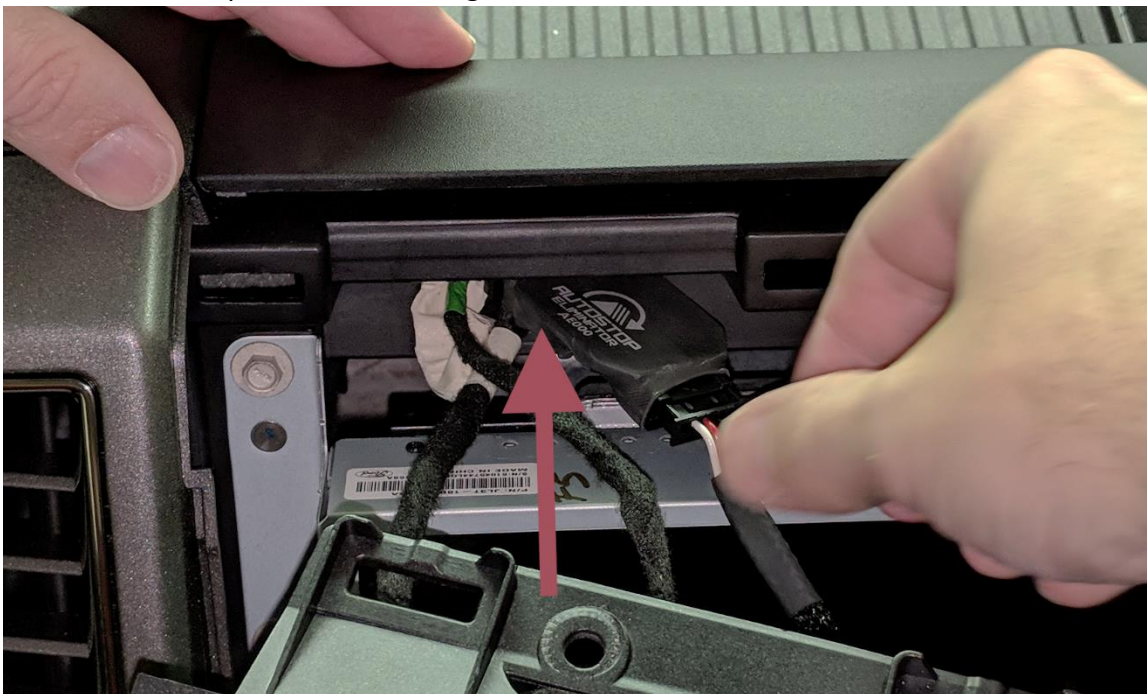
10. While pressing the release tab on the harness connector, disconnect the harness from the back of the auto start/stop switch assembly and set the switch aside.



11. Connect the factory harness to the Autostop Eliminator.



12. Feed the Autostop Eliminator through the hole where the harness is routed.





It should now look like this:



13. Feed the remaining end of the Autostop Eliminator harness through the switch hole, and reposition the bezel starting from the bottom working your way up while ensuring no wires are pinched.



14. Connect the switch assembly and insert it back into the infotainment bezel.



15. Start the vehicle and verify the auto start-stop “Off” indicator is illuminated. If the “Off” indicator is illuminated, turn off the ignition and continue to the next step. If it is not illuminated, press the button once to place the auto start-stop into the “Off” state, and then cycle the ignition to retest. Ensure the vehicle is turned off before proceeding to the next step.

Note: If the “Off” indicator won’t illuminate or repeatedly cycles on/off, remove the Autostop Eliminator device and contact TRL Automotive.



16. Without touching the screen, press on the bezel to ensure it is fully refastened into place.



17. Reinstall both 7mm screws. Again, be careful and take your time. It's easy to scratch the plastic if you rush.



18. While pushing the tray rearward to allow clearance between the tray and the front bezel, press down to snap the tray into place. Be careful to not pinch your fingers.



19. Enjoy your Autostop Eliminator!

