

| Project Name | Location | Item # | Quantity | Model # | AIA # | SIS # |
|--------------|----------|--------|----------|---------|-------|-------|
|              |          |        |          |         |       |       |



## FEATURES

- True Scientific series utilizes the most advanced technologies designed specifically for pharmacy, laboratory, and clinical applications.
- Energy efficient refrigeration system with innovative airflow technology specifically designed to maintain cabinet temperatures between 2°C - 8°C (36°F - 46°F).
- Self-Cleaning condenser technology eliminates the need for cleaning the condensing coil, reduces energy consumption, and helps maintain the tightest temperatures.
- Energy-efficient and environmentally friendly R290 hydrocarbon refrigerant.
- Temperature is measured in a glycol-filled bottle which is displayed on the control to simulate actual product temperature. In the event of a high/low-temperature alarm, door opening, temperature sensor failure or power failure, an alarm will be activated, helping to prevent product loss.
- Built in antimicrobial properties to protect the handle.
- Control has a battery back up feature and is locked at the factory to prevent inadvertent changes to the settings.

## PERFORMANCE SPECIFICATIONS

|                                    |       |     |
|------------------------------------|-------|-----|
| Internal Volume (cu. ft.) (liters) | 4.7   | 134 |
| Temperature Range (min - max)      | 2°C   | 8°C |
| Temperature Set Point              | 5°C   |     |
| Temperature Uniformity             | 0.9°C |     |
| Temperature Stability              | 0.9°C |     |
| Energy Star Certified              | Yes   |     |
| Energy Usage (kWh)                 | 1.027 |     |
| Rejected Heat (BTU/hr)             | 358   |     |

## DIMENSIONS & CONSTRUCTION

|  |  |                                  |
|--|--|----------------------------------|
| External Dimensions<br>W x D <sup>†</sup> x H (in.) (mm) | 24 x 24 ¾ x 31 ½<br>(610 x 629 x 803)              |                                  |
| Number of Doors  | 1  |                                  |
| Door Type / Swing or Slide                               | Glass  | Swing                            |
| Number of Shelves / Type of Shelves                      | 4  | 2 full<br>1 half<br>1 floor rack |
| Shelf Dimensions (W x D in.)<br>/ Shelf Capacity (lbs.)  | Full Shelf   |                                  |
|  | 20 x 12 7/8  | 53                               |
|  | Half Shelf   |                                  |
| Floor Rack   | 20 x 8 15/16                                       |                                  |
|  | 20 x 8 7/8   | 26                               |
| Probe Port(s) / Diameter (in.)                           | 1  | 0.625                            |
| Access Port(s) / Diameter (in.)                          | 0  | n/a                              |
| Internal Outlet  | No   |                                  |
| Castors or Leveling Feet                                 | 4 integrated castors,<br>2 front leg leveling feet |                                  |
| Crated Weight (lbs) (kg)                                 | 190  | 86                               |
| Refrigerant  | R290   |                                  |

## ELECTRICAL DATA

|                     |            |      |
|---------------------|------------|------|
| Voltage / Frequency | 120V       | 60Hz |
| Amperage            | 1.36A      |      |
| Plug Type           | NEMA 5-15P |      |

Specifications subject to change without notice. Chart dimensions rounded up to the nearest 1/8" (millimeters rounded up to next whole number).

† Depth does not include 1 3/8" (35 mm) for door handle or 1" (25 mm) for rear mechanical components.



|           |              |
|-----------|--------------|
| APPROVALS | AVAILABLE AT |
|-----------|--------------|

## STANDARD FEATURES

### Refrigeration System

- Refrigeration system specifically designed to maintain cabinet temperatures between 2°C - 8°C (36°F - 46°F).
- Expertly designed airflow system controls temperature uniformity throughout the cabinet within +/- 1°C.
- Self-contained, capillary tube system using environmentally friendly R290 hydrocarbon refrigerant that has zero (0) ozone depletion potential (ODP), & 0.02 global warming potential (GWP).
- Reciprocating hermetic compressor paired with forced air copper tube, aluminum fin condenser.
- Automatic defrost.
- State-of-the-art, electronically communicated evaporator and condensing fan motors. Produces less heat, reduces energy consumption, and provides more efficient airflow.
- Operating conditions: Maximum relative humidity 60% for temperatures from 15°C - 32°C (59°F - 90°F).
- Indoor use only.
- CDC compliant.

### Cabinet Construction

- **Exterior** - non-peel or chip white powder coated cold rolled steel; durable and permanent. Corrosion resistant GalFAN coated steel back.
- **Interior** - attractive, white aluminum interior liner with a stainless steel floor.
- **Insulation** - entire cabinet structure is foamed-in-place using a high density polyurethane insulation that has zero ozone depletion potential (ODP) and zero global warming potential (GWP).
- Probe access port in the back of the unit.
- LED interior lighting, provides more even lighting throughout the cabinet.
- Remote alarm contacts.

### Shelving

- Powder-coated, perforated sheet metal shelves adjustable in 1/2 inch (13 mm) increments. 4 shelves total.
- Four (4) stainless steel shelf clips are included per shelf.

### Door

- Low-E double pane thermal insulated glass assembly.
- Self closing doors, positive seal, torsion type closure system.
- Door ajar alarm.

- Door fitted with 12" (305mm) long extruded handle. Advanced technology with built-in antimicrobial properties protecting the handle.
- Door lock included.
- Magnetic door gaskets of one piece construction, removable without tools for ease of cleaning.

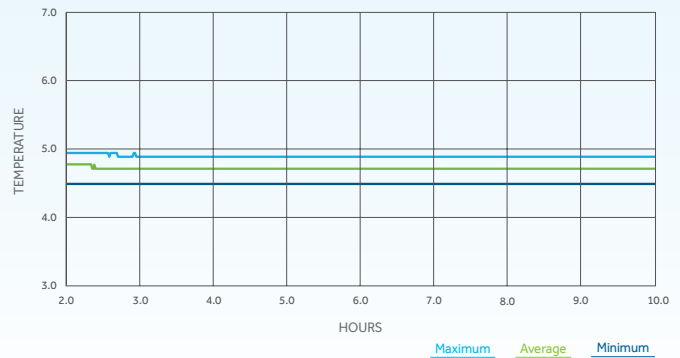
### Electrical

- Unit completely pre-wired at factory and ready for final connection to a 115/60/1 phase, 15 amp dedicated outlet. Cord and plug set included.

### Optional Features/Accessories (upcharge and lead times may apply)

- Stainless steel interior
- Stainless steel exterior
- Left door swing
- Additional shelves
- Wire shelves
- 2" diameter castors
- 6" standard legs
- 6" seismic flanged legs

## UNIFORMITY & STABILITY



## PLAN VIEW

