



Equipment for the Foodservice Industry

value + quality + service

## STAINLESS STEEL HAND SINKS



### STAINLESS STEEL HAND SINKS

### Features

Features:

- All sink bowls have a large liberal radius
- Rectangular in design for increased capacity
- Keyhole wall mount bracket
- Stainless steel basket drain with a 1 1/2" IPS
- 8" backsplash
- 4" center faucet holes
- All TIG welded
- Welded areas are blended to a satin finish to match adjacent surfaces
- Die formed countertop edge with a No-Drip offset
- One sheet of stainless steel means no seams
- Heavy gauge Type 304 stainless steel
- Wall mounting bracket is of offset design in Type 304 stainless steel
- All fittings are brass/chrome unless otherwise indicated
- Faucet supply is 1 1/2" IPS male thread hot and cold

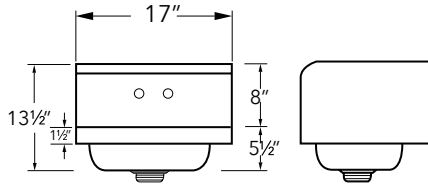


**STAINLESS STEEL HAND SINKS**

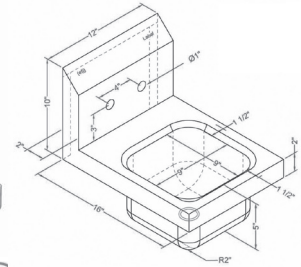
**Features**



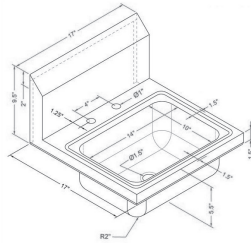
SIH817-S NSF Intertek



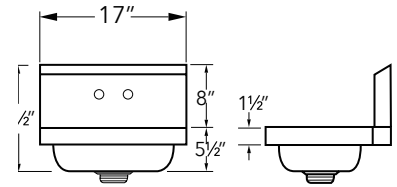
SIH813-F NSF Intertek



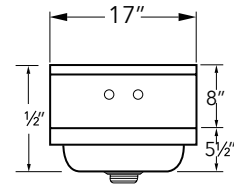
SIH817-D NSF Intertek



SIH817-F NSF Intertek



SIH817-W NSF Intertek



**STAINLESS STEEL HAND SINKS**

Product #	Description	Shipping Dimensions			Weight (lbs)
		W"	D"	H"	
SIH817-D	Deck mount hand sink w/faucet	18	18	15	13
SIH813-F	Wall mount space saver hand sink w/faucet	12	16	10	12
SIH817-F	Wall mount hand sink w/faucet	18	17	14	14
SIH817-S	Wall mount hand sink w/splash guard & faucet	18	17	14	14
SIH817-W	Wall mount hand sink	18	17	14	13

**HAND SINK ACCESSORIES**

Product #	Description	Shipping Dimensions			Weight (lbs)
		W"	D"	H"	
SIH-FW	Faucet for hand sink	9	5	3	2
SIH-FV	Foot-valve for hand sink	11	6	3	3

Specifications subject to change without notice.