



SEATPOST  
INSTRUCTIONS

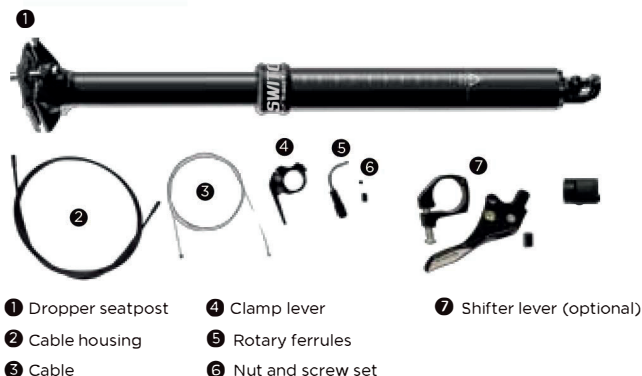
***SWITCH***  
***COMPONENTS***

## INTRODUCTION

Switch Components Dropper Post, the adjustable seatpost in ICR (Internal Cable Routing) Version, providing riders with a way to adjust saddle height without tools. Freely and easily positioning your saddle height according to the terrain you meet. The remote lever & MICRO adjustment offer quick and safe seat position applied with reliable and robust technology- virtually No Play! Unique, elegant and an easy to assemble head design.

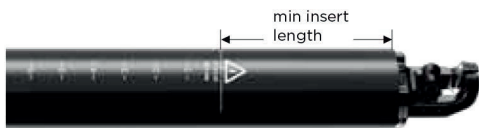
Please read through these instructions thoroughly and carefully before installing and operating seatpost and always keep this manual for your further reference.

## PACKAGE CONTENT



## INSTALLATION

- Ensure the post outer diameter conforms to the inner diameter of the seat tube of your frame.
- Please plan the cable routing on the bike first and make sure the length of cable and cable housing you need.
- You need a suitable frame with a 8mm hole to allow the inner cable to run through.
- Install your saddle on the clamp head with 5mm hex wrench to tighten at a torque of 8-10Nm.
- Insert the post into the frame and make sure the post's minimum length should be inserted into bike frame, tighten the seatclamp according to manufacturer's recommended torque and maximum torque of 7Nm.



### • Cable assembly process (Standard lever):



1. Insert the cable through the hole at the lever.



2. Pull until end of the cable stops inside the lever.

● **Cable assembly process (Standard lever):**



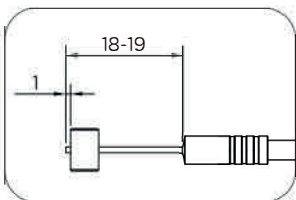
3. Assemble the rotary ferrules with the cable.



4. Insert the cable into the cable housing.

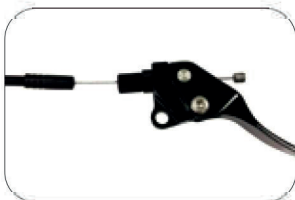


5. Assemble the rotary ferrules with the clamp lever.



6. Assemble the nut and screw set with the cable; measure the length of the cable 18-19 from the cable cap to end of cable, leave around 1mm end of cable, then screw the nut with (2mm) allen key.

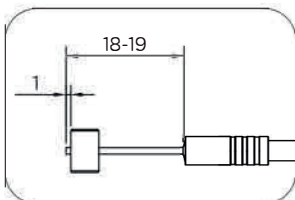
● **Cable assembly process (Shifter lever):**



1. Insert the cable through the hole at the lever.

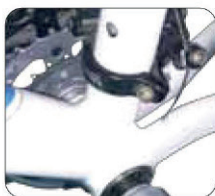


2. Pull until end of the cable stops inside the lever.

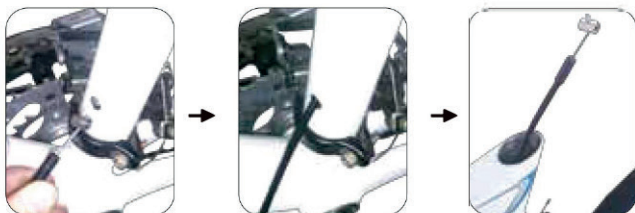


3. Assemble the nut and screw set with the cable; measure the length of the cable 18-19 from the cable cap to end of cable, leave around 1mm end of cable, then screw the nut with (2mm) allen key. Then follow steps 7-12 to finish the assembly.

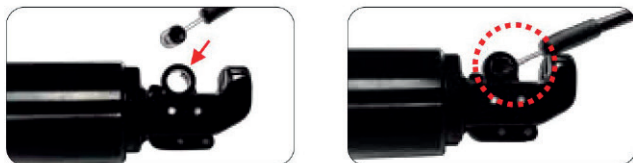
7. The dropper post uses internal cable routing end is designed to be compatible with bicycle frames that provide for such cable routing.



**DO NOT DRILL OR MODIFY YOUR FRAME IN ANY WAY.**  
Doing so will void the Warranty. Modification of your frame in any way may result in frame failure which could result in injury or death.



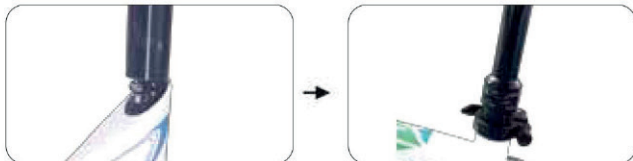
8. Run cable through the hole in your frame.



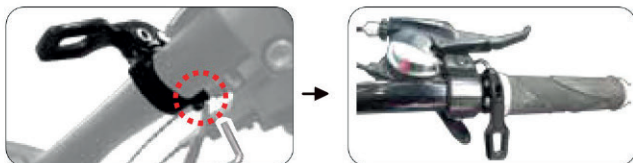
9. Fix the nut and screw set to the pull rod, as shown above.



10. Pull the rod and insert the cable through the gap, fix the cable housing at the bottom recess part.



11. Insert the post to the seat tube and adjust the appropriate height, tighten with the frame/seat collar recommended torque.



12. Use 3mm hex allen key to fix the clamp lever on the handlebar.

● **Shifter lever assembly:**

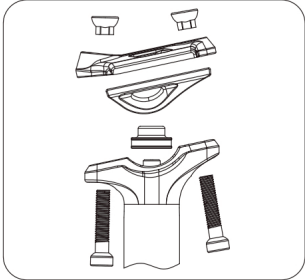


Install lever only at the left handlebar side (rider's left hand).  
Use 3mm hex allen key to fix the clamp lever onto the handlebar.

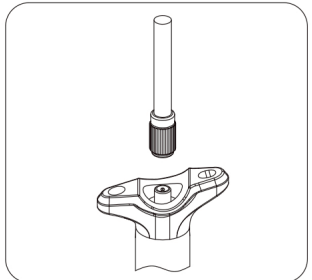
● **Adjusting the return speed:**

Switch Components dropper posts are all present with the suitable air pressure for optimal return speed, however air pressure check is required and adjustment could be made from time to time. Please note that you will need a high pressure pump to perform the following operations.

In case to adjust the air pressure:



1. Disassemble all of the clamps from the top head of the post.



2. Use a compatible shock pump and adjust to your desired pressure.

**⚠ WARNING**

Recommended operating pressures is 230-250psi, DO NOT exceed 250psi.

## OPERATION

**To lower seat post** - Press and hold the lever, un-weight seat and then push down or sit on the saddle to the desired height and then release the lever immediately.

**To raise seat post** - Remove weight from the saddle and press and hold the lever until the desired height is achieved. Release the lever.

### Notes:

If the seat post is lifted while in the lowered position, the inner tube will extend from outer tube. this is normal and it will return to proper position once weight is applied to the saddle. Picking up the bike by the saddle can also cause a temporary, spongy' feel.

### ⚠ WARNING

- Do not attempt aggressive riding until you are totally familiar with the operation and function of the seat post. Note: You will become familiar with this simple procedure quickly with practice.

## MAINTENANCE

Routine maintenance of the post will provide years of trouble-free performance. Before every ride: clean the exposed part of the post with a cloth.

### ⚠ WARNING

- Incorrect sizing interface can result in the post slippage or failure, causing serious personal injury or death.
- Press the lever downward when post is in the down position will cause it to rise up quickly. Do not operate until the saddle is installed on the seat post and the post installed on the bike. Always make sure nothing is in the way of post as it goes from DOWN to UP position. This can cause serious injury.
- Do not adjust the height of the post while riding, as it may result in loss of control.
- Keep away mud and water. When storing for extended periods, keep post in the UP position.
- Do not disassemble or cut the seat post, this could cause severe personal injury and void of warranty.

- Do not loosen the main cap. Ensure the main cap is fully tightened at all the time



- Always use lower torque recommendation by the manufacturer when installing this seat post.
- If you are not an experienced bicycle mechanic, or do not have the correct tools for this installation, please take the seat post with instructions to your local bike shop and let them handle the installation.

## WARRANTY

This seatpost is warranted for a period of 2 years from the date of manufacture against defects in workmanship. The warranty is expressly limited to the repair or replacement of the defective part at JD's option and is the sole remedy of the warranty. The warranty applies only to the original owner and is not transferrable. Proof of purchase is required to validate warranty eligibility. The warranty does not cover normal wear and tear, routine maintenance, improper installation or improper use of the seat post. Modification of the post in any manner shall void the warranty. JD Components Co., Ltd. shall not be responsible for incidental or individual costs incurred that are not covered by this warranty. The user assumes the risk of any personal injury or property damage, including damage to the seatpost and any other losses, if the seatpost is modified or improperly used at any time. This warranty gives the consumer specific legal rights which vary from state to state.