



Black Sheep Betwixtmas Shawl

By Bronagh Miskelly



Betwixtmas Shawl

Designed by Bronagh Miskelly
Exclusively for Black Sheep Wools



- Materials -

1 100g skein Fyberspates
Vivacious 4ply - 616 Crocus, 100% superwash
merino (365m/100g)
3.5mm circular needle with at least 80cm cable
3 stitchmarkers
Scrap cotton yarn
3.5mm crochet hook

- Finished Size -

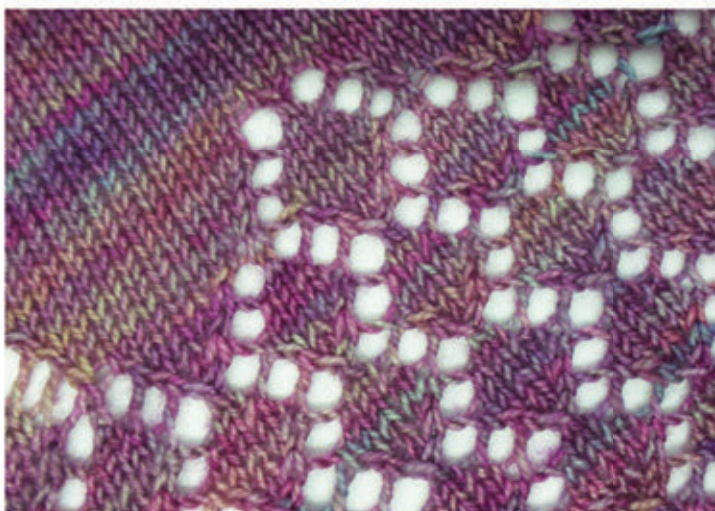
Wingspan: 140cm Depth 60cm

- Tension -

24 stitches and 35 rows to 10cm using
stocking stitch on 3.5mm needles before
blocking.

- Abbreviations -

K	knit
K2tog	knit 2 stitches together
P	purl
Pssso	pass slipped stitch over
RS	right side
Rep	repeat
Sl	slip stitch
Ssk	slip 1 knitwise, slip 1 knitwise, k2tog tbl
Sts	stitches
WS	wrong side
Yo	yarn over
Pm	Place Marker
Sm	Slip Marker
Tbl	Through back loop



- Intro / Notes -

This pretty triangular shawl is worked mainly in stocking stitch with a lace edging. The diamond lace pattern highlights the jewel colour of the yarn. The triangular shape is created using yarn overs at the edges and on each side of a centre spine stitch. Use stitch markers as recommended to keep track of these.

The shawl is worked in rows but because there are a large number of stitches towards the end of the shawl, using a circular needle (working in rows) is recommended.

There are both charted and written instructions.

Note that the shawl uses almost the whole skein, so please check your tension after about 30 rows – you can sometimes find that your actual knitting tension differs from your tension swatch. If it is looser than stated (fewer stitches to 10cm) please restart using smaller needles.

- Written Instructions -

Shawl set up

With crochet hook and scrap yarn make a chain of 4sts.

Slip the sts on to your needle and k4 with main yarn.

Next row: K1, k2tog, k1

K 3 more rows.

Next row: K3, pickup and k 3 sts along side of work, remove scrap yarn from end of work and slip the three loops of main yarn on to left needle, k3. 9sts.

Next row (WS): K3, pm, k3, pm, k3.

Start shawl shaping

Row 1: K3, sm, yo, k1, yc, pm, k1, yo, k1, yo, sm, k3. 13sts.

Row 2: K3, p to last marker (slipping markers) k3.

Row 3: K3, sm, yo, k to marker, yo, sm, k1, yo, k to marker, yo, sm, k3. 17sts.

Row 4: As row 2.

Rep rows 3 and 4 until there are 201 sts. **

Start lace pattern

Row 1 (RS): K3, sm, *yo, k1, yo, ssk, k6, [k6, yo, sl1, k2tog, pssso, yo, k7] rep to 8sts before marker, k5, k2tog, yo, k1, yo, sm, k1, rep from * once more, k2. 205 sts

Row 2 and all WS rows: K3, p to last marker, k3.

Row 3: K3, sm, *yo, k3, yo, ssk, k5, [k4, k2tog, yo, k3, yo, ssk, k5] rep to 9 sts before marker, k4, k2tog, yo, k3, yo, sm, k1, rep from * once more, k2. 209 sts

Row 5: K3, sm, *yo, k5, yo, ssk, k4, [k3, k2tog, yo, k5, yo, ssk, k4] rep to 10sts before marker, k3, k2tog, yo, k5, yo, sm, k1, rep from * once more, k2. 213 sts

Row 7: K3, sm, *yo, ssk, k3, k2tog, yo, k1, yo, ssk, k2, [k1, k2tog, yo, k1, yo, ssk, k3, k2tog, yo, k1, yo, ssk, k2] rep to 11 sts before marker, k1, k2tog, yo, k1, yo, ssk, k3, k2tog, yo, sm, k1, rep from * once more, k2. 213 sts

Row 9: K3, sm, *yo, k1, yo, ssk, k1, k2tog, yo, k3, yo, ssk, k1, [(k2tog, yo, k3, yo, ssk, k1) twice] rep to 11 sts before marker, k2tog, yo, k3, yo, ssk, k1, k2tog, yo, k1, yo, sm, k1, rep from * once more, k2. 217 sts

Row 11: K3, sm, *yo, k3, yo, [sl1, k2tog, pssso, yo, k5, yo] rep to 6 sts before marker, sl1, k2tog, pssso, yo, k3, yo, sm, k1, rep from * once more, k2. 221 sts

Row 13: K3, sm, *yo, k2, k2tog, yo, k1, [k2, yo, ssk, k1, k2tog, yo, k1] rep to 6sts before marker, k2, yo, ssk, k2, yo, sm, k1, rep from * once more, k2. 225 sts

Row 15: K3, sm, *yo, k1, [yo, sl1, k2tog, pssso, yo, k5] rep to 4 sts before marker, yo, sl1, k2tog, pssso, yo, k1, yo, sm, k1, rep from * once more, k2. 229 sts

Row 17: K3, sm, *yo, k2tog, yo, k3, yo, ssk, [k1, k2tog, yo, k3, yo, ssk] rep to marker, yo, sm, k1, rep from * once more, k2. 233 sts

Row 19: K3, sm, *yo, k2tog, yo, k5, [yo, sl1, k2tog, pssso, yo, k5] rep to 2sts before marker, yo, ssk, yo, sm, k1, rep from * once more, k2. 237 sts

Row 21: K3, sm, *yo, [k3, yo, ssk, k1, k2tog, yo] rep to 3sts before marker, k3 yo, sm, k1, rep from * once more, k2. 241 sts.

Row 23: K3, sm, *yo, k5, [yo, sl1, k2tog, pssso, yo, k5] rep to marker, yo, sm, k1, rep from * once more, k2. 245 sts

Row 25: K3, sm, *yo, k1, [yo, ssk, k1, k2tog, yo, k3] rep 6 sts before marker, yo, ssk, k1, k2tog, yo, k1, yo, sm, k1, rep from * once more, k2. 249 sts

Row 27: K3, sm, *yo, k3, [yo, sl1, k2tog, pssso, yo, k5] rep to 6 sts before marker, yo, sl1, k2tog, pssso, yo, k3, yo, sm, k1, rep from * once more, k2. 253 sts
Rep rows 12 to 22 once more. 273 sts

Row 39: K3, sm, *yo, k1, [yo, sl1, k2tog, pssso, yo, k1] rep to marker, yo, sm, k1, rep from * once more, k2. 277 sts

Row 41: K3, sm, *yo, k1, k2tog, yo, [k1, yo, sl1, k2tog, pssso, yo] rep to 4 sts before marker, k1, yo, ssk, k1 yo, sm, k1, rep from * once more, k2. 281 sts.

Row 42: K3, p to last marker, k3.

Cast off loosely – use a larger needle if necessary.

- Chart Instructions -

Work as written instructions to **. 201 sts

Start lace pattern – chart 1

Row 1: K3, sm, yo, work row 1 of chart 1 to marker, yo, sm, k1, yo, work row 1 of chart 1 to marker, yo, sm, k3. 205 sts

Row 2: K3, p to last marker, sm, k3

Row 3: K3, sm, yo, work row 1 of chart 1 to marker, yo, sm, k1, yo, work row 1 of chart 1 to marker, yo, sm, k3. 209 sts

Cont as set until all 10 chart rows are complete. 217 sts.

Start main chart – chart 2

Row 1: K3, sm, yo, work row 1 of chart 2 to marker, yo, sm, k1, yo, work row 1 of chart 2 to marker, yo, sm, k3. 221 sts

Cont as set until chart 2 is complete, rep charts rows 3-12 once more. 273sts

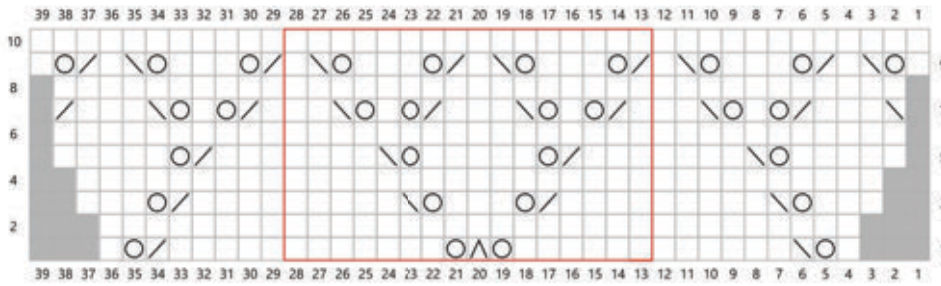
Edging – chart 3

Row 1: K3, sm, yo, work row 1 of chart 3 to marker, yo, sm, k1, yo, work row 1 of chart 3 to marker, yo, sm, k3. 277 sts

Complete 3 rem rows of chart 3 as set. 281 sts.

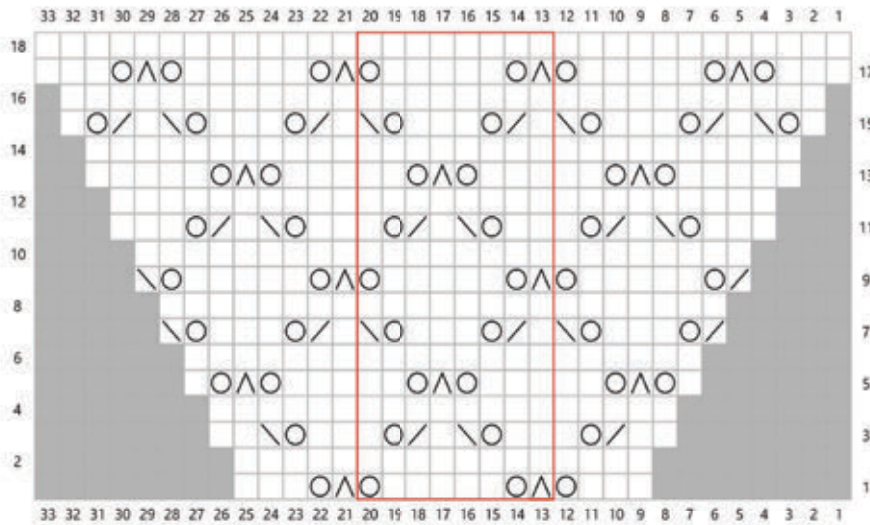
Cast off loosely – use a larger needle if necessary.

- Chart 1 -

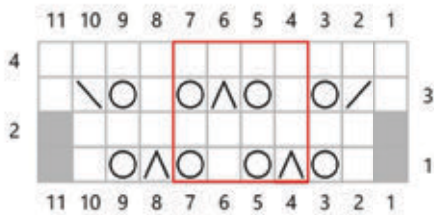


- Key
- RS: ssk
WS: p2tog tbl
 - grey no stitch
 - pattern repeat
 - RS: knit
WS: purl
 - yo
 - RS: k2tog
WS: p2tog
 - RS: sl1, k2tog, pss0
WS: sl1 wyif, p2tog tbl, pss0

- Chart 2 -



- Chart 3 -



- To Finish -

Soak shawl in lukewarm water then roll in towel to squeeze out excess water. Pin out on dry towel or blocking board to shawl measurements, pinning out each point of the shawl.