

ROWAN



SHIMMER

By Martin Storey

ZB285-00004-UK

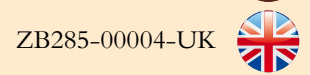
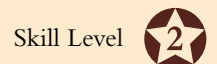


© Copyright Rowan Yarns, 2020.



SHIMMER

by Martin Storey



SIZE

One size

YARN

Patina

5 x 50gm
(photographed in Old Gold 411)

More Yarn
Information

on knitrowan.com

NEEDLES

1 pair 4mm (no 8) (US 6) needles

TENSION

22 sts and 31 rows to 10 cm measured over st st using 4mm (US 6) needles.

SPECIAL ABBREVIATION

MK = make knot as folls: (K1, P1, K1, P1, K1) all into next st, then lift 2nd, 3rd, 4th and 5th sts on right needle over first st and off needle.

PONCHO

Using 4mm (US 6) needles cast on 145 sts.

Row 1 (RS): K1, *P1, K1, rep from * to end.

Row 2: As row 1.

These 2 rows form moss st.

Work in moss st for a further 4 rows, ending with RS facing for next row.

Beg and ending rows as indicated and repeating the 15 st patt repeat 9 times across each row, now work in patt, placing chart as folls:

Row 1 (RS): Moss st 5 sts, (work next 15 sts as row 1 of chart) 9 times, moss st 5 sts.

Row 2: Moss st 5 sts, (work next 15 sts as row 2 of chart) 9 times, moss st 5 sts. These 2 rows set the sts – 5 sts still in moss st at each end of rows, with 9 repeats of chart between.

Keeping sts and patt correct as now set, cont as folls:

Cont until chart row 26 has been completed, then rep chart rows 1 to 26 again. Now rep chart rows 27 to 48 twice, then chart rows 49 to 56 twice.

This completes lace section.

Next row (RS): Moss st 5 sts, K to last 5 sts, moss st 5 sts.

Next row: Moss st 5 sts, P to last 5 sts, moss st 5 sts.

These 2 rows set the sts for rest of poncho – 5 sts still in moss st at each end of rows but all other sts now in st st.

Cont straight until work meas 44 cm, ending with RS facing for next row. Place a marker at end of last row (to denote neck edge of left shoulder seam).

Cont straight until work meas 104 cm, ending with RS facing for next row. Place another marker at end of last row (to denote neck edge of left shoulder seam).

Cont straight until poncho meas 146 cm, ending with RS facing for next row.

Now work in moss st across **all** sts for 6 rows, ending with RS facing for next row.

Cast off in moss st.

MAKING UP

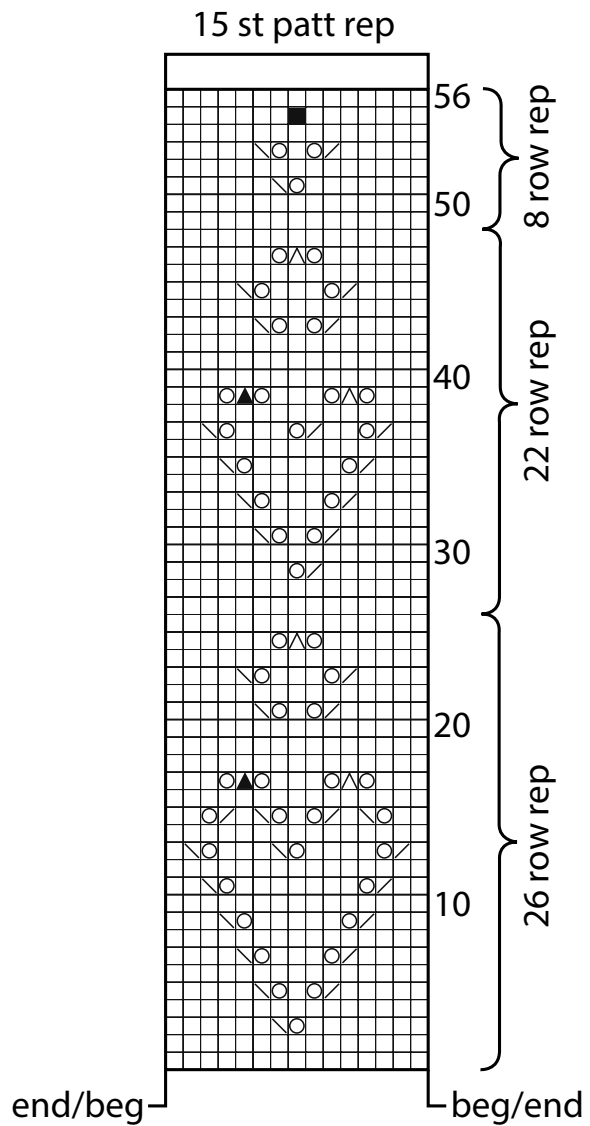
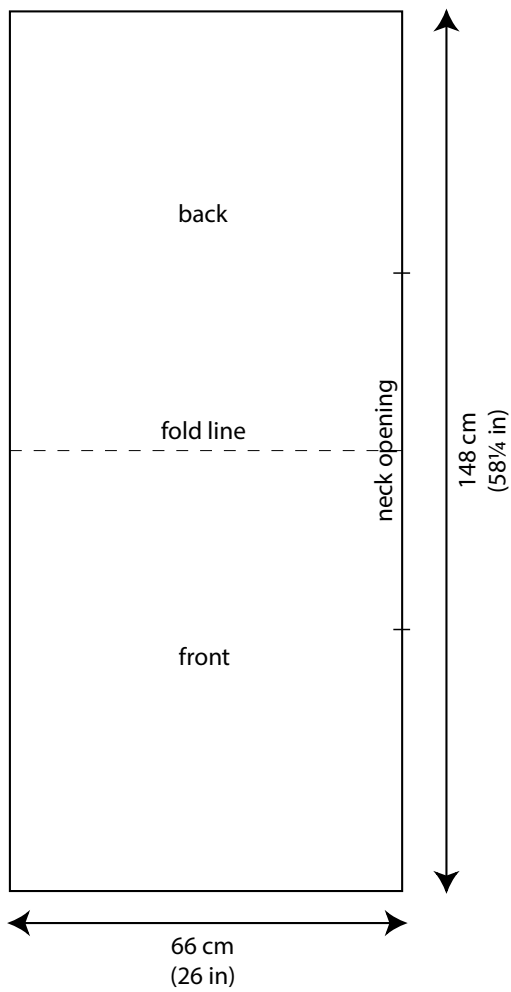
Press as described on the information page.

Join over arm seam by joining row-end edges from marked points to cast-on and cast-off edges as in photograph.

See information page for finishing instructions.

Key

- K on RS, P on WS
- ▧ K2tog
- ▨ Sl 1, K1, p2sso
- yfwd
- ▲ K3tog
- ▤ Sl 2 sts as though to K2tog, K1, p2sso
- MK



Information Pages