



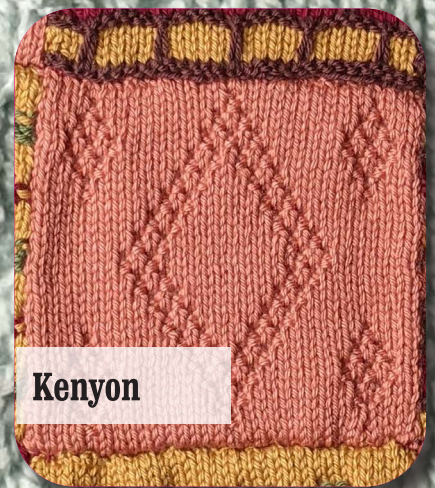
Risley

Another Day Out Blanket

By Sarah Hatton
Part 8 - Bents



Birchwood



Kenyon



Newton

Another Day Out Blanket

Designed By Sarah Hatton

Part 8 - Bents



Abbreviations

k - knit; **p** - purl; **rep** - repeat; **st(s)** - stitch(es);
sl - slip; **yf** - yarn forward;
psso - pass slipped st over; **tog** - together;

Make 9

Using E cast on 33 sts.

Beg with a K row, work next 38 rows as set on chosen chart.

Cast off.

Chart A written version

Row 1 (RS): Knit.

Row 2 and all WS rows: Purl.

Row 3: K16, yf, sl1, k1, psso, k15.

Row 5: K14, k2tog, yf, k1, yf, sl1, k1, psso, k14.

Row 7: K13, k2tog, yf, k3, yf, sl1, k1, psso, k13.

Row 9: K12, k2tog, yf, k2, yf, sl1, k1, psso, k1, yf, sl1, k1, psso, k12.

Row 11: K11, (k2tog, yf, k1) twice, yf, sl1, k1, psso, k1, yf, sl1, k1, psso, k11.

Row 13: K10, k2tog, yf, k1, k2tog, yf, k3, yf, sl1, k1, psso, k1, yf, sl1, k1, psso, k10.

Row 15: K9, k2tog, yf, k1, k2tog, yf, k5, yf, sl1, k1, psso, k1, yf, sl1, k1, psso, k9.

Row 17: K8, k2tog, yf, k1, k2tog, yf, k7, yf, sl1, k1, psso, k1, yf, sl1, k1, psso, k8.

Row 19: K7, k2tog, yf, k1, k2tog, yf, k9, yf, sl1, k1,

psso, k1, yf, sl1, k1, psso, k7.

Row 21: K9, yf, sl1, k1, psso, k1, yf, sl1, k1, psso, k5, k2tog, yf, k1, k2tog, yf, k9.

Row 23: K10, yf, sl1, k1, psso, k1, yf, sl1, k1, psso, k3, k2tog, yf, k1, k2tog, yf, k10.

Row 25: K11, (yf, sl1, k1, psso, k1) twice, k2tog, yf, k1, k2tog, yf, k11.

Row 27: K12, yf, sl1, k1, psso, k1, yf, sl1, k2tog, psso, yf, k1, k2tog, yf, k12.

Row 29: K13, yf, sl1, k1, psso, k1, yf, sl1, k1, psso, k2tog, yf, k13.

Row 31: K14, yf, sl1, k1, psso, k1, k2tog, yf, k14.

Row 33: K15, yf, sl1, k2tog, psso, yf, k15.

Row 35: As row 3.

Row 37: Knit.

Row 38: Purl.

Chart B written version

Row 1 (RS): Knit. (33 sts)

Row 2 (WS): Purl.

Row 3: K5, (p1, k10) twice, p1, k5.

Row 4: P5, (k1, p10) twice, k1, p5.

Row 5: K4, (p1, k1, p1, k8) twice, p1, k1, p1, k4.

Row 6: P4, (k1, p1, k1, p8) twice, k1, p1, k1, p4.

Row 7: K3, ((p1, k1) twice, p1, k6) twice, (p1, k1) twice, p1, k3.

Row 8: P3, ((k1, p1) twice, k1, p6) twice, (k1, p1) twice, k1, p3.

Row 9: K4, p1, k1, p1, k6, (p1, k1) 3 times, p1, k6, p1, k1, p1, k4.

Row 10: P4, k1, p1, k1, p6, (k1, p1) 3 times, k1, p6, k1, p1, k1, p4.

Row 11: K5, p1, k6, p1, k1, p1, k3, p1, k1, p1, k6, p1, k5.

Row 12: P5, k1, p6, k1, p1, k1, p3, k1, p1, k1, p6, k1, p5.

Row 13: K11, p1, k1, p1, k5, p1, k1, p1, k11.

Row 14: P11, k1, p1, k1, p5, k1, p1, k1, p11.

Row 15: K10, p1, k1, p1, k7, p1, k1, p1, k10.

Row 16: P10, k1, p1, k1, p7, k1, p1, k1, p10.

Row 17: (K9, p1, k1, p1) twice, k9.

Row 18: (P9, k1, p1, k1) twice, p9.

Row 19: K8, p1, k1, p1, k11, p1, k1, p1, k8.

Row 20: P8, k1, p1, k1, p11, k1, p1, k1, p8.

Row 21: Repeat row 17.

Row 22: Repeat row 18.

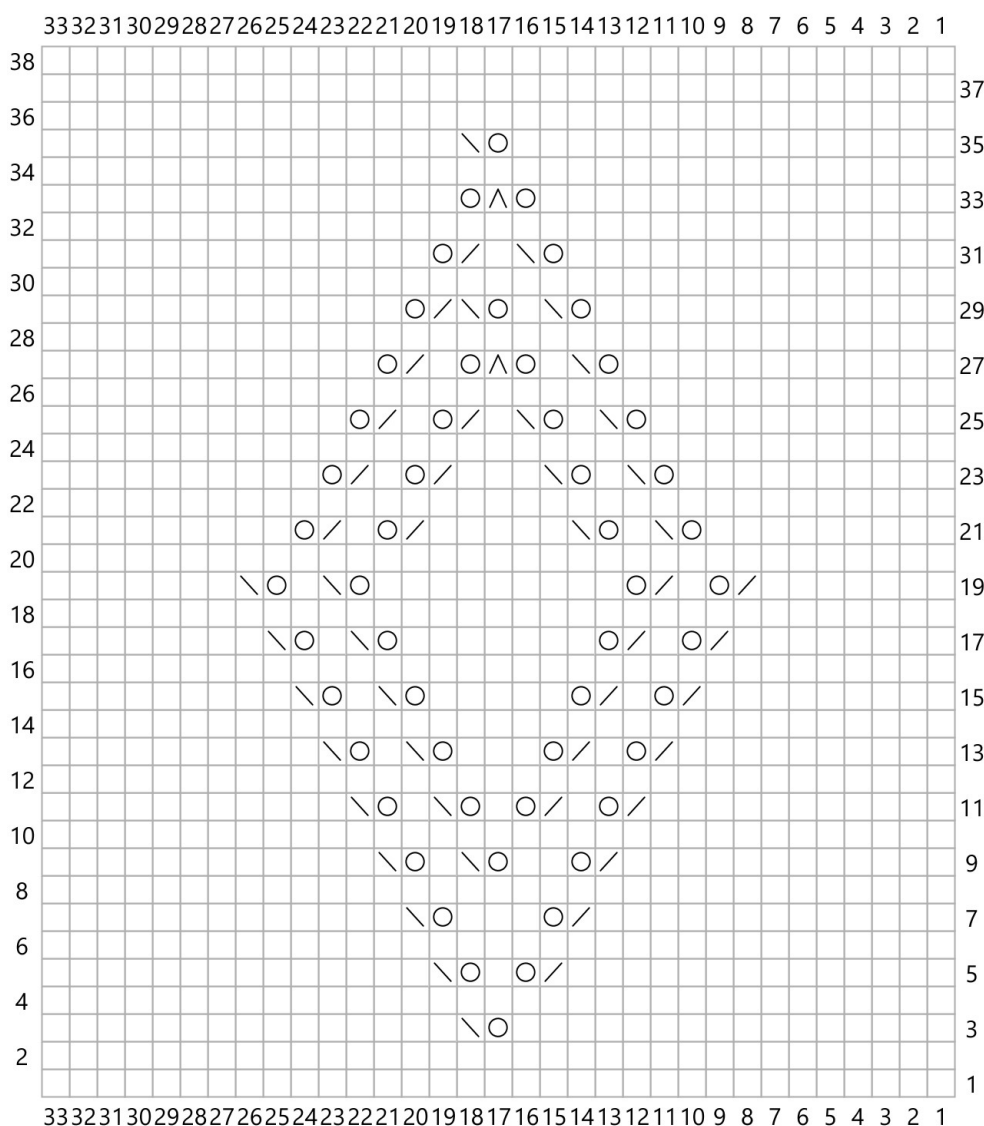
Row 23: Repeat row 15.

Row 24: Repeat row 16.
Row 25: Repeat row 13.
Row 26: Repeat row 14.
Row 27: Repeat row 11.
Row 28: Repeat row 12.
Row 29: Repeat row 9.
Row 30: Repeat row 10.
Row 31: Repeat row 7.
Row 32: Repeat row 8.
Row 33: Repeat row 5.

Row 34: Repeat row 6.
Row 35: Repeat row 3.
Row 36: Repeat row 4.
Row 37: Knit.
Row 38: Purl.

Block to 18cm square.

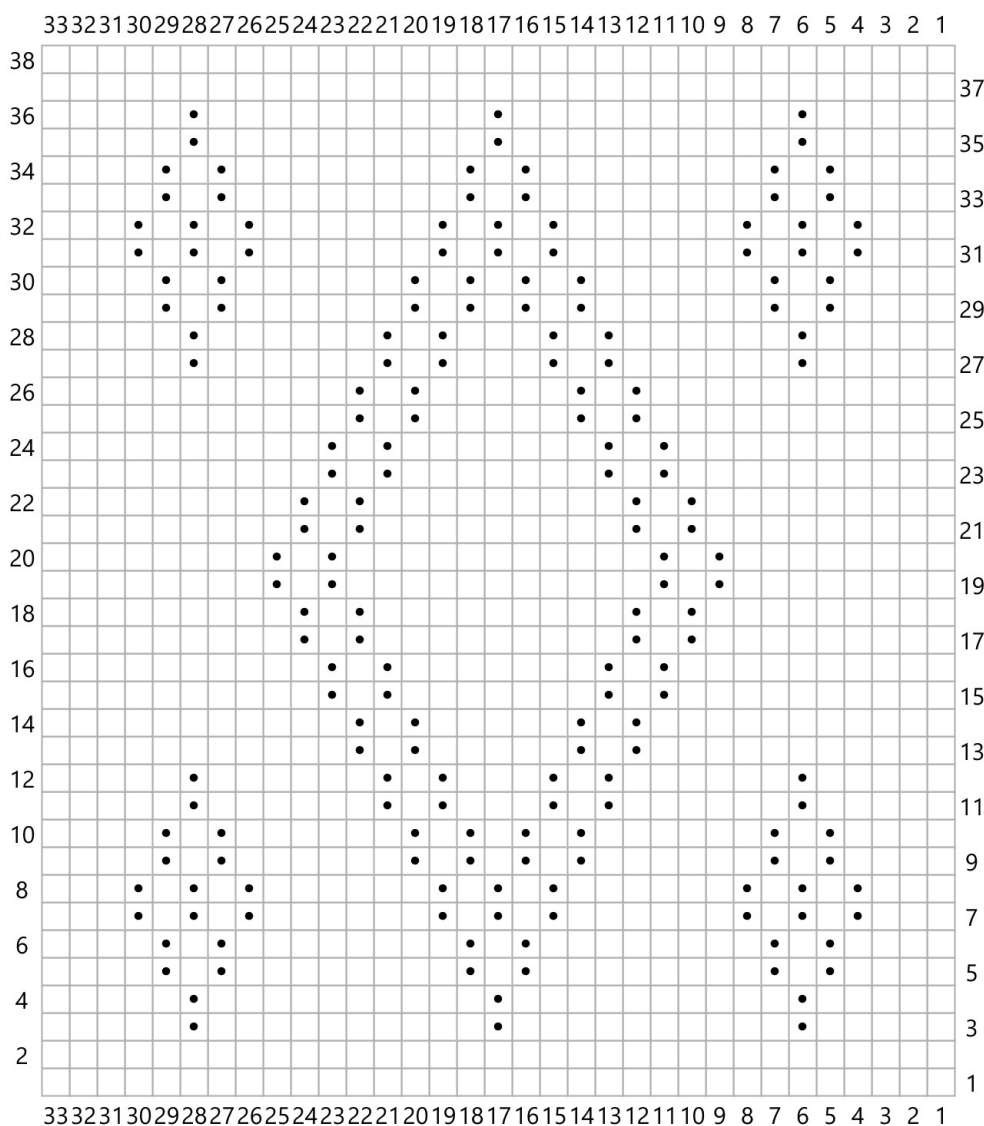
Chart A



Key

- RS: knit
WS: purl
- RS: yf
- RS: sl1, k1, pssso
- RS: k2tog
- RS: sl1, k2tog, pssso

Chart B



Key

- RS: knit
WS: purl
- RS: purl
WS: knit

Share your progress
#anotherdayoutkal

