



Risley



Birchwood



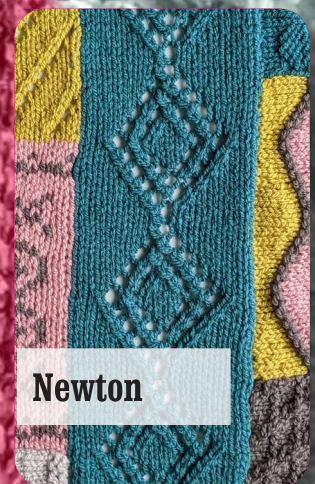
Kenyon (version 2)



Kenyon



Newton (version 2)



Newton

Risley (version 2)

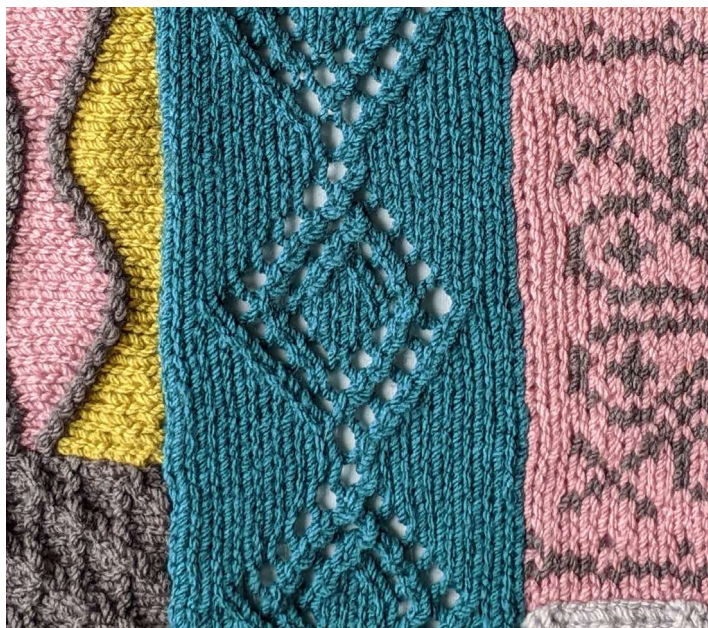
Another Day Out Blanket

By Sarah Hatton
Part 4 - Risley Moss

Another Day Out Blanket

Designed By Sarah Hatton

Part 4 - Risle Moss



Abbreviations

k - knit; **p** - purl; **rep** - repeat; **st(s)** - stitch(es);
yf - yarn forward; **tog** - together; **fol** - follows;
sl - slip one stitch;

Make 2

Using D cast on 19 sts.

Choose your block design and work as follows:-

Charted version

Work as given on chosen chart repeating rows 3 to 24 15 times.

For chart A and B work rows 1 and 2 once more.

Cast off. (strip meas approx. 140cm when slightly stretched)

Chart A written version

Row 1 (RS): Knit.

Row 2 and all WS rows: Purl.

Row 3: K9, yf, sl1, k1, pssso, k8.

Row 5: K7, k2tog, yf, k1, yo, sl1, k1, pssso, k7.

Row 7: K6, k2tog, yf, k1, (yf, sl1, k1, pssso) twice, k6.

Row 9: K5, (k2tog, yf) twice, k1, (yf, sl1, k1, pssso) twice, k5.

Row 11: K4, (k2tog, yf) twice, k3, (yf, sl1, k1, pssso) twice, k4.

Row 13: K3, (k2tog, yf) twice, k5, (yf, sl1, k1, pssso) twice, k3.

Row 15: K5, (yf, sl1, k1, pssso) twice, k1, (k2tog, yo) twice, k5.

Row 17: K6, yf, sl1, k1, pssso, yf, sl1, k2tog, pssso, yf, k2tog, yf, k6.

Row 19: K7, yf, sl1, k1, pssso, yf, sl1, k2tog, pssso, yf, k7.

Row 21: K8, yf, sl1, k2tog, pssso, yf, k8.

Row 23: As row 3.

Row 24: Purl.

Repeat rows 3-24 15 times.

Chart B written version

Row 1 (RS): Knit.

Row 2 (WS): Purl.

Row 3: K9, p1, k9.

Row 4: P8, k1, p1, k1, p8.

Row 5: K7, (p1, k1) twice, p1, k7.

Row 6: P6, (k1, p1) 3 times, k1, p6.

Row 7: K5, p1, k1, p1, k3, p1, k1, p1, k5.

Row 8: P4, k1, p1, k1, p5, k1, p1, k1, p4.

Row 9: As row 7.

Row 10: As row 6.

Row 11: As row 5.

Row 12: P3, k1, p4, k1, p1, k1, p4, k1, p3.

Row 13: K2, p1, k1, (p1, k4) twice, p1, k1, p1, k2.

Row 14: As row 12.

Row 15: As row 5.

Row 16: As row 6.

Row 17: As row 7.

Row 18: As row 8.

Row 19: As row 7.

Row 20: As row 6.

Row 21: As row 5.

Row 22: As row 4.

Row 23: As row 3.

Row 24: Purl.

Repeat rows 3-24 15 times.

Chart C written version

Row 1 (RS): K1, k2tog, yf, k12, k2tog, yf, k2.

Row 2 and all WS rows: Purl.

Row 3: K2, (yf, sl1, k1, pssso, k5) twice, yf, sl1, k1, pssso, k1.

Row 5: K1, k2tog, yf, k4, k2tog, yf, k1, yf, sl1, k1, pssso, k3, k2tog, yf, k2.

Row 7: K2, yf, sl1, k1, pssso, k2, k2tog, yf, (k3, yf, sl1, k1, pssso) twice, k1.

Row 9: K1, k2tog, yf, k5, yf, sl1, k2tog, pssso, yf, k4, k2tog, yf, k2.

Row 11: As row 3.

Row 13: K1, k2tog, yf, k6, yf, sl1, k1, pssso, k4, k2tog, yf, k2.

Row 15: K2, yf, sl1, k1, pssso, k3, k2tog, yf, k1, yf, sl1, k1, pssso, k4, yf, sl1, k1, pssso, k1.

Row 17: K1, (k2tog, yf, k3) twice, yf, sl1, k1, pssso, k2, k2tog, yf, k2.

Row 19: K2, yf, sl1, k1, pssso, k4, yf, sl1, k2tog, pssso, yf, k5, yf, sl1, k1, pssso, k1.

Row 21: As row 13.

Row 23: K2, yf, sl1, k1, pssso, k12, yf, sl1, k1, pssso, k1.

Row 24: Purl

Repeat rows 3-24 15 times.

Chart D written version

Row 1 (RS): Knit. (19 sts)

Row 2 (WS): Purl.

Row 3: K9, p1, k9.

Row 4: K1, p7, k1, p1, k1, p7, k1.

Row 5: K1, p1, k5, p1, k3, p1, k5, p1, k1.

Row 6: P2, k1, p3, k1, p5, k1, p3, k1, p2.

Row 7: K3, p1, k1, p1, k7, p1, k1, p1, k3.

Row 8: P4, k1, p9, k1, p4.

Row 9: Repeat row 3.

Row 10: Repeat row 4.

Row 11: K1, p1, k5, (p1, k1) twice, p1, k5, p1, k1.

Row 12: K1, p1, k1, p3, (k1, p1) 3 times, k1, p3, k1, p1, k1.

Row 13: (K1, p1) 4 times, k3, (p1, k1) 4 times.

Row 14: P2, (k1, p1) twice, k1, p5, (k1, p1) twice, k1, p2.

Row 15: Repeat row 7.

Row 16: Repeat row 8.

Row 17: Repeat row 3.

Row 18: Repeat row 4.

Row 19: Repeat row 5.

Row 20: Repeat row 6.

Row 21: Repeat row 7.

Row 22: Repeat row 8.

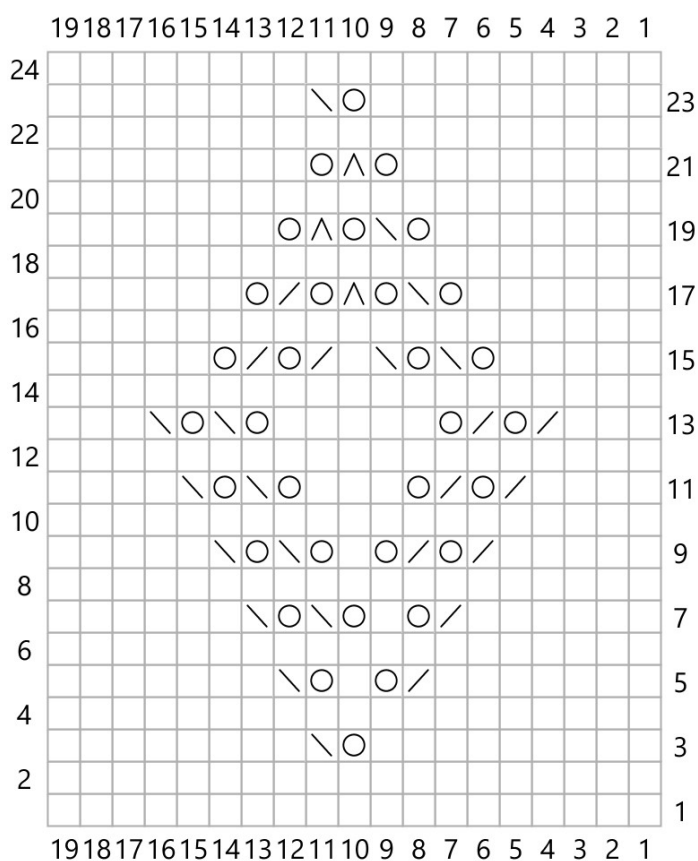
Row 23: Knit.

Row 24: Purl.

Repeat rows 3-24 15 times.

These stripes can now be sewn in place along each edge of your work.

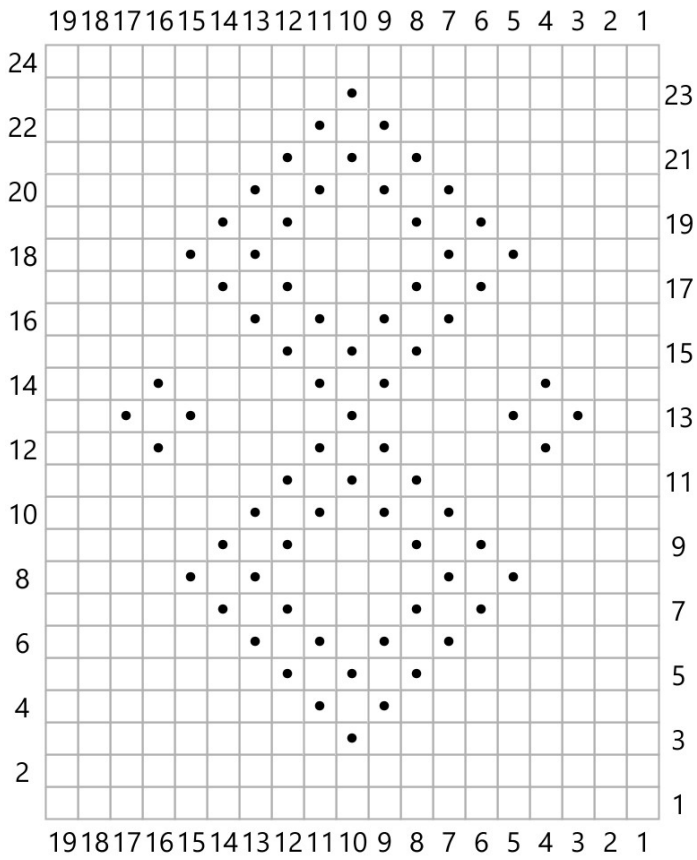
Chart A



Key

- RS: Knit
- WS: Purl
- RS: yf
- RS: sl1, k1, pssso
- RS: sl1, k2tog, pssso
- RS: k2tog

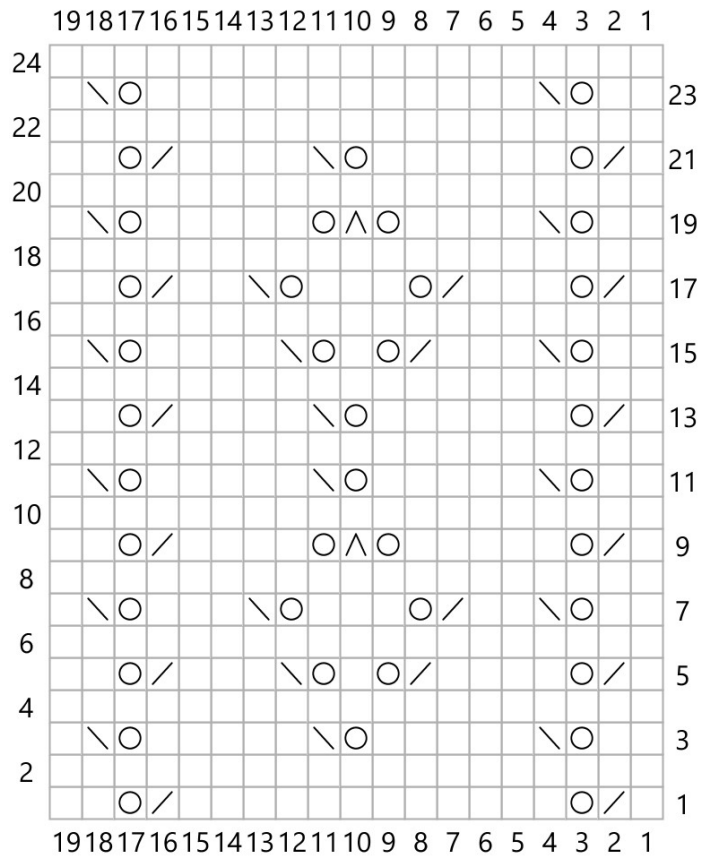
Chart B



Key

- RS: Knit
WS: Purl
- RS: Purl
WS: Knit

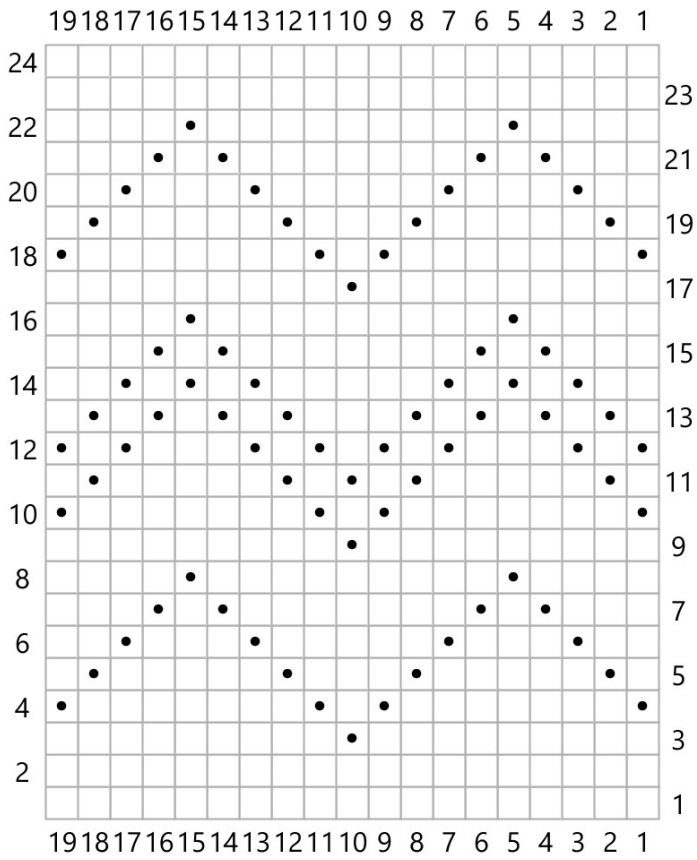
Chart C



Key

- RS: Knit
WS: Purl
- RS: yf
- RS: sl1, k1, pssso
- RS: sl1, k2tog, pssso
- RS: k2tog

Chart D



Key

- RS: Knit
WS: Purl
- RS: Purl
WS: Knit

Share your progress
#anotherdayoutkal

