



**A Day Out
Blanket**
By Sarah Hatton
Week 4 - Stone Pit Lane

A Day Out Blanket

Designed By Sarah Hatton

WEEK 4 - Stone Pit Lane



Abbreviations

k - knit; **p** - purl; **rep** - repeat; **st(s)** - stitch(es);
sl - slip; **wyif** - with yarn in front of work;
wyab - with yarn at back of work; **LH** - left hand;
RH - right hand; **yo** - yarn over needle;
tbl - through back of loop; **psso** - pass slipped st over; **tog** - together;

BLOCK 4 (Make 4 in A and B)

SPECIAL ABBREVIATIONS

3/3 LC*- slip next 3st onto cable needle at front of work, k3 then k3 from cable needle.

3/3 RC*- slip next 3st onto cable needle at back of work, k3 then k3 from cable needle.

Using 5mm needles and A cast on 40 sts. Work 32 rows as set on chart.

Cast off.

Chart written instruction

Row 1 (RS): K3, p1, k6, p1, k2, p1, k12, p1, k2, p1, k6, p1, k3.

Row 2 and all WS rows: P3, k1, p6, k1, p2, k1, p12, k1, p2, k1, p6, k1, p3.

Row 3: As row 1.

Row 5: K3, p1, (3/3 LC, p1, k2, p1, 3/3 RC) twice, p1, k3.

Row 7: As row 1.

Row 9: As row 1.

Row 11: As row 1.

Row 13: K3, p1, 3/3 LC, p1, k2, p1, 3/3 LC, 3/3 RC, p1, k2, p1, 3/3 RC, p1, k3.

Row 15: As row 1.

Row 17: As row 1.

Row 19: As row 1.

Row 21: As row 5.

Row 23: As row 1.

Row 25: As row 1.

Row 27: As row 1.

Row 29: As row 13.

Row 31: As row 1.

Row 32 : P3, k1, p6, k1, p2, k1, p12, k1, p2, k1, p6, k1, p3.

Edgings

With RS facing, using 4.5mm needles and B pick up and knit 27 sts along one edge of block.

Knit 1 row.

Next row: Using A, k1, sl1, k1, psso, knit to last 3 sts, k2tog, k1.

Next row: Knit.

Next row: Using B, k1, sl1, k1, psso, knit to last 3 sts, k2tog, k1.

Next row: Knit.

Rep these 4 rows until 7 sts rem.

Next row: Using A, k1, sl1, k1, psso, k1, k2tog, k1. 5 sts.

Next row: Knit.

Next row: Using A, k1, sl1, k2tog, psso, k1. 3 sts.

Next row: Knit.

Cast off rem sts.

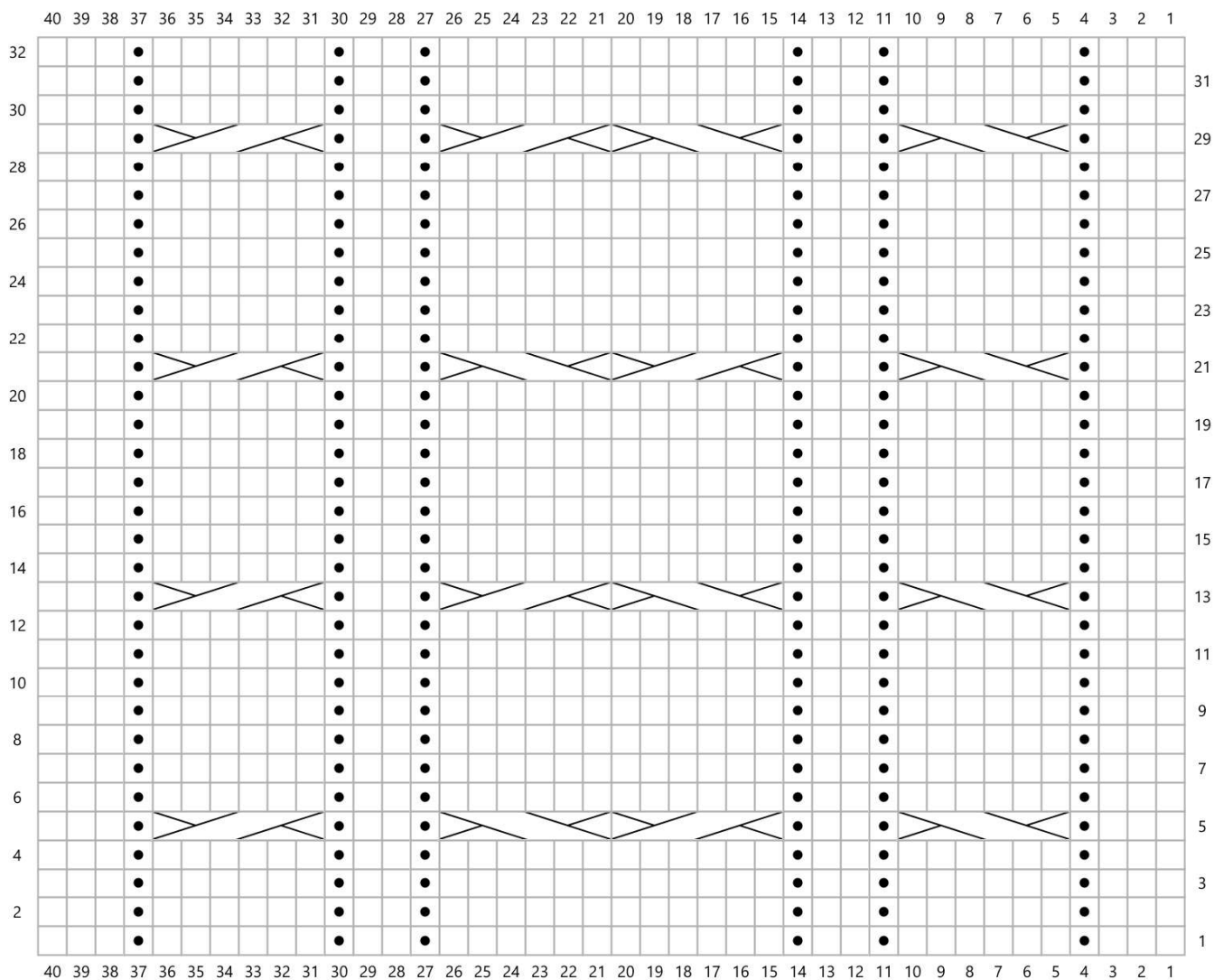
Rep edging along all edges of cabled block. If you are concerned about how widely spaced this is along the cast on and cast off edge please feel free to pick up more sts and decrease across the first row to 27 sts.

Block to 20cm x 20cm.

*Please note: 3/3 LC is also known as C6F. 3/3 RC is also known as C6B.

Share your progress
#adayoutkal





Key

□ RS: knit
WS: purl

● RS: purl
WS: knit

 3/3 LC

 3/3 RC

