

Hayfield

Crochet

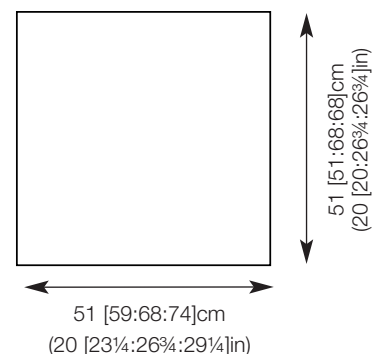


BONUS DK

Small/Medium/
Large/ Extra Large

MEASUREMENTS

ACTUAL MEASUREMENT	Small	Medium	Large	Extra Large	
	102	118	136	148	cm
	40	46½	53½	58¼	in
FULL LENGTH (approximately)	51	51	68	68	cm
	20	20	26¾	26¾	in
SLEEVE LENGTH Long	44	45	46	46	cm
	17¼	17¾	18	18	in
Short	6	6	6	6	cm
	2½	2½	2½	2½	in



MATERIALS

Long Sleeved Top

F013 Hayfield Bonus DK

A shade 814	3	4	5	5	100g balls
B shade 961	1	1	1	1	100g ball
C shade 963	1	1	1	1	100g ball
D shade 956	1	1	1	1	100g ball
E shade 944	1	1	1	1	100g ball

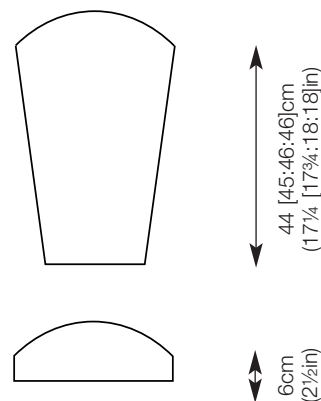
Short Sleeved Top

F013 Hayfield Bonus DK

A shade 611	3	3	4	4	100g balls
B shade 971	1	1	1	1	100g ball
C shade 994	1	1	1	1	100g ball
D shade 814	1	1	1	1	100g ball

The yarn amounts are based on average requirements when specified tension and yarn is used.

You will also need 1 4.50 (UK7 - USAG/6) Crochet Hook.



TENSION

1 granny square measures 17cm, (6½in) on 4.50 crochet hook or the size required to give correct tension.

15 sts and 9½ rows to 10cm, (4in) over trebles on 4.50 crochet hook or the size required to give correct tension.

Check your tension - if less stitches use a thinner hook, if more use a thicker hook.

IT IS ESSENTIAL TO WORK TO THE STATED TENSION TO ENSURE SUCCESS.

ABBREVIATIONS

NB these instructions use UK terms throughout - US terms are given in brackets below where applicable

ch chain, **cm** centimetres, **cont** continue, **dc** double crochet (US single crochet), **DK** double knitting, **foll** following, **g** grammes, **htr** half treble (US half double crochet), **in** inch(es), **inc** increase(ing), **patt** pattern, **rem** remain(ing), **rep** repeat, **rnd** round, **rs** right side, **sp** space, **ss** slip stitch, **st(s)** stitch(es), **tr** treble (US double crochet).

Circle the size you wish to make

4th to 8th Rnd. A.

ch to form ring.

LONG SLEEVED TOP

BACK AND FRONT

Make 18 [18:32:32] squares using the following shade combinations:-

Square 1 (Make 5 [5 8:8] squares)

1st Rnd. A.

2nd Rnd. E.

3rd Rnd. C.

4th to 6th Rnd. D.

7th and 8th Rnds. A.

Square 2 (Make 5 [5:8:8] squares)

1st Rnd. C.

2nd Rnd. D.

3rd Rnd. B.

Square 3 (Make 4 [4:8:8] squares)

1st Rnd. D.

2nd Rnd. C.

3rd Rnd. B.

4th to 6th Rnd. E.

7th and 8th Rnds. A.

Square 4 (Make 4 [4:8:8] squares)

1st Rnd. E.

2nd Rnd. B.

3rd Rnd. D.

4th to 6th Rnd. C.

7th and 8th Rnds. A.

Granny Square

Using 4.50 hook make 5ch, ss into 1st

1st Rnd. 2ch (2ch counts as 1tr), 2tr into ring, 1ch, (3tr into ring, 1ch) 5 times, ss into 1st tr. Fasten off.
 2nd Rnd. Join next yarn into any 1ch sp, 2ch, 2tr into same 1ch sp, 1ch, 3tr into same 1ch sp, * 1ch, (3tr, 1ch, 3tr) into next 1ch sp, rep from * to end, 1ch, ss into 1st tr. Fasten off.
 3rd Rnd. Join next yarn into any 1ch sp, 2ch, 2tr into same 1ch sp, 1ch, * 3tr into next 1ch sp, 1ch, rep from * to end, ss into 1st tr. Fasten off.
 4th Rnd. Join next yarn into any 1ch sp, 2ch, 2tr into same 1ch sp, 2ch, 3tr into same 1ch sp, * 1ch, (3htr into next 1ch sp, 1ch) twice, (3tr, 2ch, 3tr) into next 1ch sp, * rep from * to *

twice more, 1ch, (3htr into next 1ch sp, 1ch) twice, ss into 1st tr.

5th Rnd. Ss to next 2ch corner sp, 2ch, (2tr, 3ch, 3tr) into same 2ch corner sp, * (1ch, 3tr into next 1ch sp) 3 times, 1ch, (3tr, 3ch, 3tr) into next 2ch corner sp, * rep from * to * twice more, (1ch, 3tr into next 1ch sp) 3 times, 1ch, ss into 1st tr.

6th Rnd. Ss to next 3ch corner sp, 2ch, (2tr, 3ch, 3tr) into same 3ch corner sp, * (1ch, 3tr into next 1ch sp) 4 times, 1ch, (3tr, 3ch, 3tr) into next 3ch corner sp, * rep from * to * twice more, (1ch, 3tr into next 1ch sp) 4 times, 1ch, ss into 1st tr. Fasten off here for squares 1, 3 and 4.

7th Rnd. For squares 1, 3 and 4 rejoin yarn A to any 3ch corner sp or for square 2 ss to next 3ch corner sp, for all 4 squares 2ch, (2tr, 3ch, 3tr) into same 3ch corner sp, * (1ch, 3tr into next 1ch sp) 5 times, 1ch, (3tr, 3ch, 3tr) into next 3ch corner sp, * rep from * to * twice more, (1ch, 3tr into next 1ch sp) 5 times, 1ch, ss into 1st tr.

8th Rnd. 1ch (1ch counts as 1dc), 1dc into each tr and 1ch sp to end, working 3dc into each 3ch corner sp, ss to 1st dc. Fasten off.

With rs of all squares facing sew 9 [9:16:16] squares together into a large square 3 [3:4:4] squares wide and 3 [3:4:4] squares deep for the back then sew rem 9 [9:16:16] squares together in same way for front.

For 2nd and 4th sizes only Back Side Panels (Both alike)

With rs facing rejoin A to side edge of back and proceed as follows:-

**** 1st Row.** 2ch (2ch counts as 1tr), work [76:101]tr evenly along side edge, turn. [77:102]tr.

2nd Row. 2ch, 1tr into each tr to end, turn.

Rep 2nd row [2:1] times more. Fasten off. **

Front Side Panels (Both alike)

With rs facing rejoin yarn to side edge

of front and work as given for Back Side Panels from ** to **.

For all 4 sizes

LONG SLEEVES (Both alike)

Using 4.50 hook and A, make 32 [34:37:37]ch.

1st Row. 2ch (2ch counts as 1tr), 1tr into each ch to end, turn.

31 [33:36:36]tr.

2nd Row. 2ch, 1tr into each tr to end, turn.

2nd row sets tr patt.

Keeping continuity of tr patt (throughout) proceed as follows:-

Work 5 [23:8:20] rows inc 1 st at each end of 2nd and every foll 3rd [3rd: 2nd:2nd] row. 35 [49:44:56]tr.

Work 28 [12:27:15] rows inc 1 st at each end of every foll 4th [4th:

3rd:3rd] row. 49 [55:62:66]tr.

Cont without shaping until sleeve measures 44 [45:46:46]cm, (17¼ [17¾:18:18]in).

Shape Sleeve Top

1st Row. Ss to 3rd tr, 1ch (1ch counts as 1dc), 1htr into next tr, 1tr into each tr to last 4tr, 1htr into next tr, 1dc into next tr, turn. 45 [51:58:62] sts.

Rep 1st row 3 [3:3:4] times more. 33 [39:46:46] sts.

Next Row. Ss to 4th st, 1ch, 1htr into next tr, 1tr into each tr to last 5 sts, 1htr into next tr, 1dc into next tr, turn. 27 [33:40:40] sts.

Rep last row 3 [4:5:5] times more. 9 [9:10:10] sts. Fasten off.

TO MAKE UP

Join shoulder seams leaving centre 28 [29:31:31]cm, (11 [11½:12:12]in) free for neck opening. Fold sleeves in half lengthways then placing folds to shoulder seams, sew sleeve tops in position for approximately 19 [21:23: 25]cm, (7½ [8¼:9:9¾]in) down from shoulder seams. Join side seams. Pin out garment to the measurement given. Cover with damp cloths and leave until dry. See ball band for washing and further care instructions.

SHORT SLEEVED TOP BACK AND FRONT

Make 18 [18:32:32] squares using the following shade combinations:-

Square 1 (Make 5 [5 8:8] squares)

1st Rnd. A.

2nd Rnd. C.

3rd Rnd. D.

4th to 6th Rnd. B.

7th and 8th Rnds. A.

Square 2 (Make 5 [5:8:8] squares)

1st Rnd. B.

2nd Rnd. D.

3rd Rnd. C.

4th to 8th Rnd. A.

Square 3 (Make 4 [4:8:8] squares)

1st Rnd. C.

2nd Rnd. B.

3rd Rnd. A.

4th to 6th Rnd. D.

7th and 8th Rnds. A.

Square 4 (Make 4 [4:8:8] squares)

1st Rnd. D.

2nd Rnd. A.

3rd Rnd. B.

4th to 6th Rnd. C.

7th and 8th Rnds. A.

Granny Square

Work as given for Granny Square of Long Sleeved Top.

For 2nd and 4th sizes only Back Side Panels (Both alike)

Work as given for Back Side Panels of Long Sleeved Top.

Front Side Panels (Both alike)

Work as given for Front Side Panels of Long Sleeved Top.

For all 4 sizes SHORT SLEEVES

Using 4.50 hook and A, make 52 [58:65:67]ch.

1st Row. 2ch (2ch counts as 1tr), 1tr into each ch to end, turn.

51 [57:64:66]tr.

2nd Row. 2ch, 1tr into each tr to

end, turn.

2nd row sets tr patt.

Keeping continuity of tr patt (throughout) cont until sleeve measures 6cm, (2½in).

Shape Sleeve Top

1st Row. Ss to 3rd tr, 1ch (1ch counts as 1dc), 1htr into next tr, 1tr into each tr to last 4tr, 1htr into next tr, 1dc into next tr, turn. 47 [53:60:62] sts.

Rep 1st row 1 [1:2:4] times more.

43 [49:52:46] sts.

Next Row. Ss to 4th st, 1ch, 1htr into next tr, 1tr into each tr to last 5 sts, 1htr into next tr, 1dc into next tr, turn. 37 [43:46:40] sts.

Rep last row 2 [3:3:2] times more.
25 [25:28:28] sts.

Next Row. Ss to 5th st, 1ch, 1htr into next tr, 1tr into each tr to last 6 sts, 1htr into next tr, 1dc into next tr, turn. 17 [17:20:20] sts.

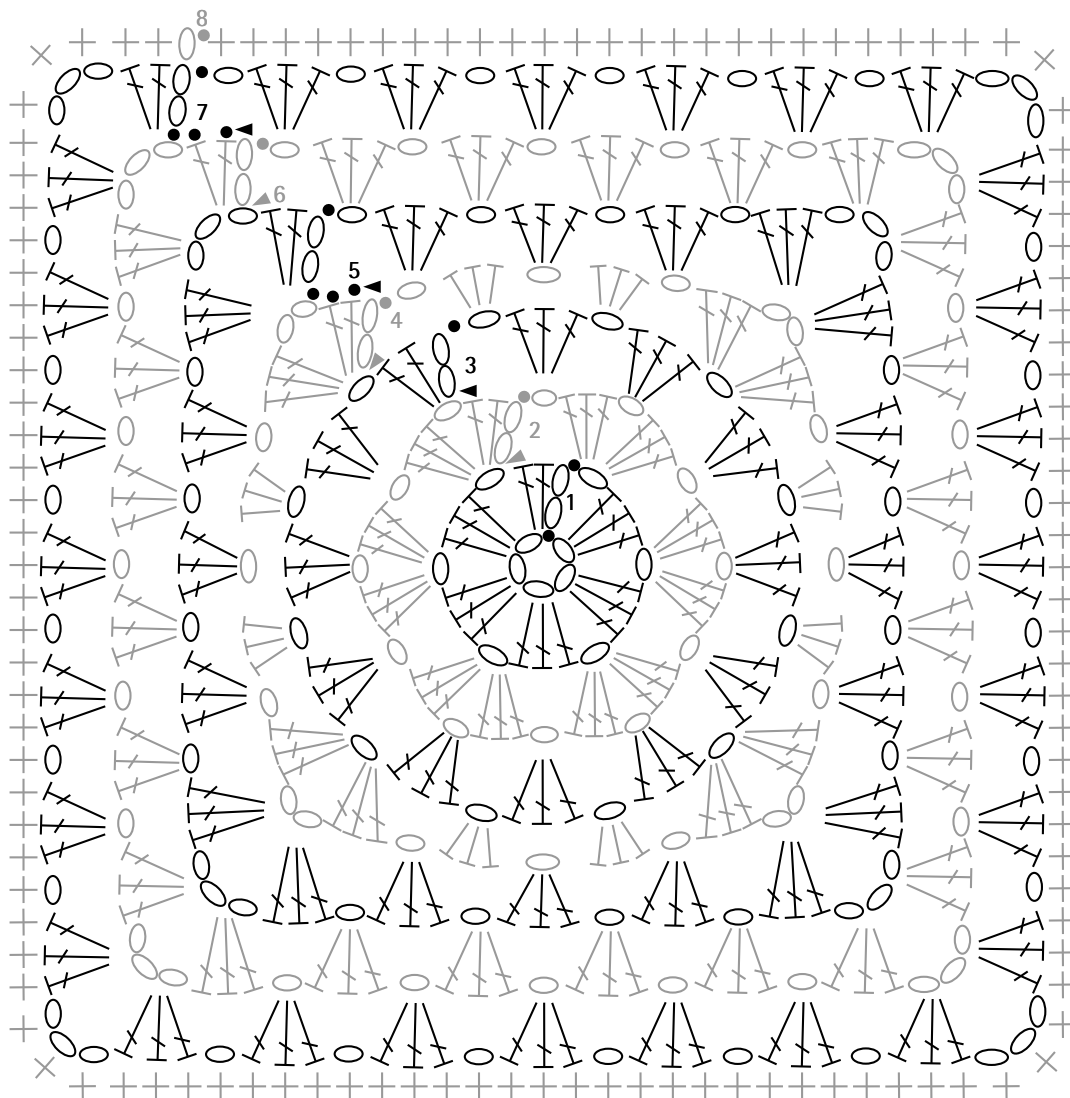
Rep last row once. 9 [9:12:12] sts.

Fasten off.

TO MAKE UP

Join shoulder seams leaving centre 28 [29:31:31]cm, (11 [11½:12:12]in) free for neck opening. Fold sleeves in half lengthways then placing folds to shoulder seams, sew sleeve tops in position for approximately 20 [22:24:26]cm, (8 [8¾:9½:10¼]in) down from shoulder seams. Join side seams. Pin out garment to the measurement given. Cover with damp cloths and leave until dry. See ball band for washing and further care instructions.

Granny Square



Key

- slip stitch
- ▲ beginning of rnd
- ch
- + dc
- ┆ htr
- ┆┆ tr



in	
cm	1
	2
	3
	4
	5
	6
	7
	8
	9
	10
	11
	12
	13
	14
	15
	16
	17
	18
	19
	20
	21
	22
	23
	24
	25
	26