



DESIGN N°

10501

ADVANCED

FAIR ISLE SNOOD

SIRDAR

WEST YORKSHIRE
Est_1880



WEST YORKSHIRE
BRITISH
DESIGN,
EXPERTISE AND
CRAFTSMANSHIP
TRUSTED BY
GENERATIONS
OF HAND
KNITTERS
EST_1880

WE TRIPLE-CHECK
OUR PATTERNS TO
GUARANTEE SUCCESS
WHEN YOU USE
SIRDAR YARNS

CASMERE MERINO SILK

DOUBLE KNITTING

ONE SIZE

MORE COLOURS
ON BACK PAGE



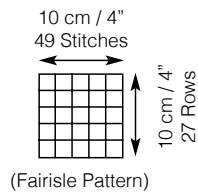
CASMERE MERINO SILK

DOUBLE KNITTING



“Knitting with this cashmere and silk blend feels so indulgent. And the patterns look like a designer brand. I can’t believe it’s so affordable.”

TENSION & NEEDLES



4mm / UK8 - USA6



Established in West Yorkshire in 1880, Sirdar is a British yarn company with a rich hand knitting heritage. Generations of families have grown up wearing Sirdar hand knitting yarns and designs.

Each season, we complement your favourite Sirdar classics with the latest yarn innovations and effects for fashionable knits. And we triple check every stylish Sirdar pattern to guarantee a successful knit with the recommended Sirdar yarn.

Sirdar Cashmere Merino Silk is a blend of pure silk, extra fine merino wool and the softest Himalayan cashmere, perfect for sophisticated womenswear. In a palette of grown-up, flattering shades inspired by the grandest of English estates, everything about this yarn whispers luxury.

TRY THESE SHADES

Turn to the back page to choose your favourite.



423 Nomad Orange



403 China Blue



419 Downton Violet



406 Soft Pewter

MEASUREMENTS

Size Width x Length	69 cm x 30 cm 27¼" x 11¾"
Yarn A* No Balls	1
Yarn B* No Balls	1
Yarn C* No Balls	1
Yarn D* No Balls	1
Yarn E* No Balls	2
Yarn	F005 Cashmere Merino Silk, DK, 50g, A shade 422 Sand Stone, B shade 407 Royal Navy, C shade 415 Polished Copper, D shade 421 Meadow Green, E shade 423 Nomad Orange
You also need	1 pair of 4mm (UK8 - USA6) Knitting Needles and 1 pair of 3¼mm (UK10 - USA3) Knitting Needles.

*Average number of balls required when you use the specified Sirdar yarn and tension shown

CO-ORDINATE WITH VEST DESIGN N° 10307



TIPS AND TECHNIQUES CHART

Read chart from right to left for odd numbered rows which are knit and left to right for even numbered rows which are purl.

FAIR ISLE TECHNIQUE

When working in more than one colour, where possible the colour not in use should be stranded loosely across the back of work to retain elasticity of fabric.

STITCHES & ABBREVIATIONS

A - shade A

B - shade B

C - shade C

cm - centimetres

D - shade D

DK - double knitting

E - shade E

g - grammes

in - inch(es)

k - knit

mm - millimetres

p - purl

rep - repeat

rs - right side

st(s) - stitch(es)

ws - wrong side

Using 4mm needles, thumb method and C, cast on 73 sts.

From 1st to 45th row of chart sets patt. Cont in patt until snood measures 69cm, (27¹/₄in), ending with a ws row.

Cast off.

BORDERS (Both alike)

With rs facing, using 3¹/₄mm needles and C, pick up and knit 171 sts evenly along length of snood.

1st Row. P1, * k1, p1, rep from * to end.

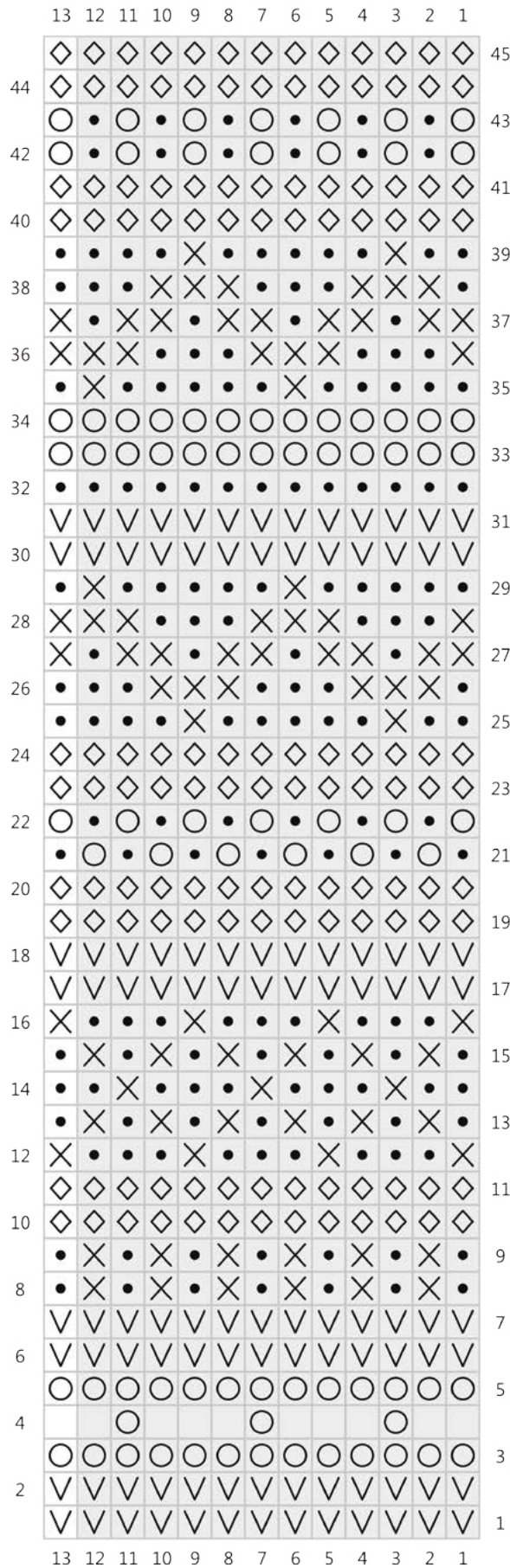
2nd Row. * K1, p1, rep from * to last st, k1.

1st and 2nd rows set 1x1 rib.

Work 5 rows more in 1x1 rib.

Cast off in rib.

KNITTING CHART



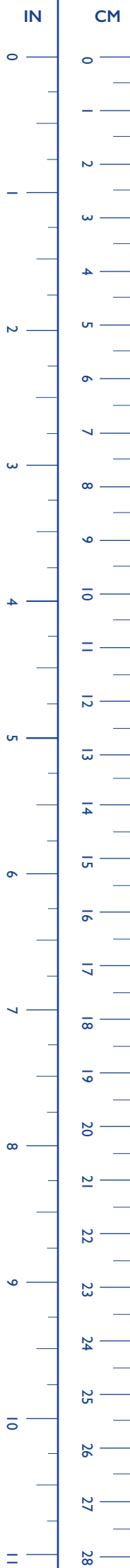
Key

- RS: knit
□ WS: purl
- SHADE A
- ⊗ SHADE B
- ▽ SHADE B
- SHADE D
- ◇ SHADE E
- repeat

TO MAKE UP

Join cast on and cast off edges. Pin out snood to the measurement given. Cover with damp cloths and leave until dry. See ball band

for washing and further care instructions.



CASMERE MERINO SILK

DOUBLE KNITTING

CHOOSE YOUR FAVOURITE COLOUR

423 Nomad Orange



403 China Blue



419 Downton Violet



406 Soft Pewter

