



DESIGN N°

10210

INTERMEDIATE

SIRDAR

WEST YORKSHIRE
Est_1880



WEST YORKSHIRE
BRITISH
DESIGN,
EXPERTISE AND
CRAFTSMANSHIP
TRUSTED BY
GENERATIONS
OF HAND
KNITTERS
EST_1880

WE TRIPLE-CHECK
OUR PATTERNS TO
GUARANTEE SUCCESS
WHEN YOU USE
SIRDAR YARNS

CASHMERE MERINO SILK

DOUBLE KNITTING

81-137cm
32-54in

MORE COLOURS
ON BACK PAGE



SIRDAR

WEST YORKSHIRE
Est_1880

CASHMERE MERINO SILK

DOUBLE KNITTING

Established in West Yorkshire in 1880, Sirdar is a British yarn company with a rich hand knitting heritage. Generations of families have grown up wearing Sirdar hand knitting yarns and designs.

Each season, we complement your favourite Sirdar classics with the latest yarn innovations and effects for fashionable knits. And we triple check every stylish Sirdar pattern to guarantee a successful knit with the recommended Sirdar yarn.

Sirdar Cashmere Merino Silk is a blend of pure silk, extra fine merino wool and the softest Himalayan cashmere, perfect for sophisticated womenswear. In a palette of grown-up, flattering shades inspired by the grandest of English estates, everything about this yarn whispers luxury.



“Knitting with this cashmere and silk blend feels so indulgent. And the patterns look like a designer brand. I can’t believe it’s so affordable.”

TRY THESE SHADES

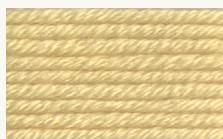
Turn to the back page to choose your favourite.



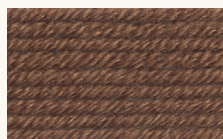
403 China Blue



402 Candlelit Mink



413 Morning Yellow



417 Saddle Brown


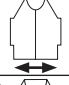






Cardigan
shade 403 China Blue



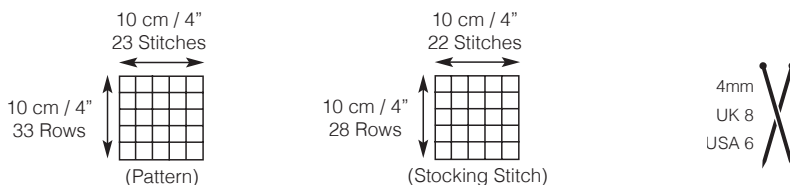
MEASUREMENTS

Follow the pattern instructions for your size

Size	S	M	L	XL	XXL	XXXL
Chest 	81/86 cm 32/34"	91/97 cm 36/38"	102/107 cm 40/42"	112/117 cm 44/46"	122/127 cm 48/50"	132/137 cm 52/54"
Width 	101 cm 39¾"	111 cm 43¾"	118 cm 46½"	129 cm 50¾"	139 cm 54¾"	150 cm 59"
Full Length 	60 cm 23¾"	62 cm 24½"	64 cm 25¼"	66 cm 26"	68 cm 26¾"	70 cm 27½"
Sleeve Length 	46 cm 18"	46 cm 18"	47 cm 18½"	48 cm 19"	48 cm 19"	48 cm 19"
Yarn* No Balls 	13	14	16	17	19	21
Buttons 	5	5	5	6	6	6
Yarn Button ref You also need	F005 Cashmere Merino Silk, DK, 50g, shade 403 China Blue Sirdar Elegant Button Code B561 I - 0785 I Pair of 4mm (UK8 – USA6) Knitting Needles and I Pair of 3¼mm (UK10 – USA3) Knitting Needles. I 4mm (UK8 – USA6) 100cm Circular Needle and I 3¼mm (UK10 – USA3) 100cm Circular Needle if required. Stitch Holders.					

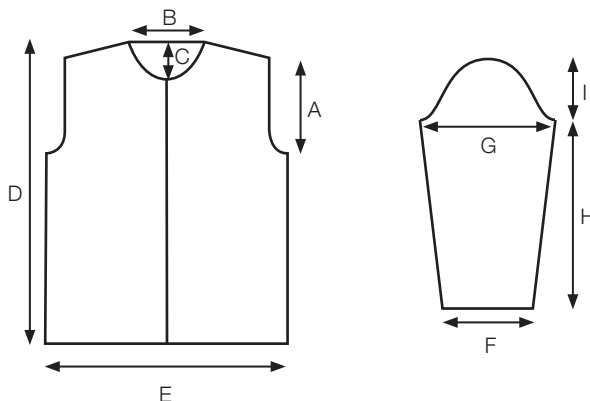
*Average number of balls required when you use the specified Sirdar yarn and tension shown below

TENSION & NEEDLES



PIECE MEASUREMENTS

- A 20 [22:24:25:26:27]cm
(8 [8¼:9½:9¾:10¼:10¾]")
- B 20 [21:21:22:22:22]cm
(8 [8¼:8¼:8¾:8¾:8¾]")
- C 9 [9:10:10:10:10]cm
(3½ [3½:4:4:4:4]")
- D 60 [62:64:66:68:70]cm
(23¼ [24½:25¼:26:26¾:27½]")
(measured from back of neck)
- E 50.5 [55.5:59:64.5:69.5:75]cm,
(19¾ [21¼:23¼:25¼:27¼:29½]")
- F 20 [21:22:23:24:25]cm
(8 [8¼:8¾:9:9½:9¾]")
- G 35 [37:41:43:45:47]cm
(13¾ [14½:16:17:17¾:18½]")
- H 46 [46:47:48:48:48]cm
(18 [18:18½:19:19:19]")
- I 12 [14:16:17:17:18]cm
(4¾ [5½:6¼:6½:6½:7]")



0 1 2 3 4 5 6 7 8 9 10 11 12 13 14 15 16 17 18 19 20 21 22 23 24 25 26 27 28

0 1 2 3 4 5 6 7 8 9 10 11 12 13 14 15 16 17 18 19 20 21 22 23 24 25 26 27 28

TIPS & TECHNIQUES

When working from a chart read from right to left for odd numbered rows and from left to right for even numbered rows.

CHART 1

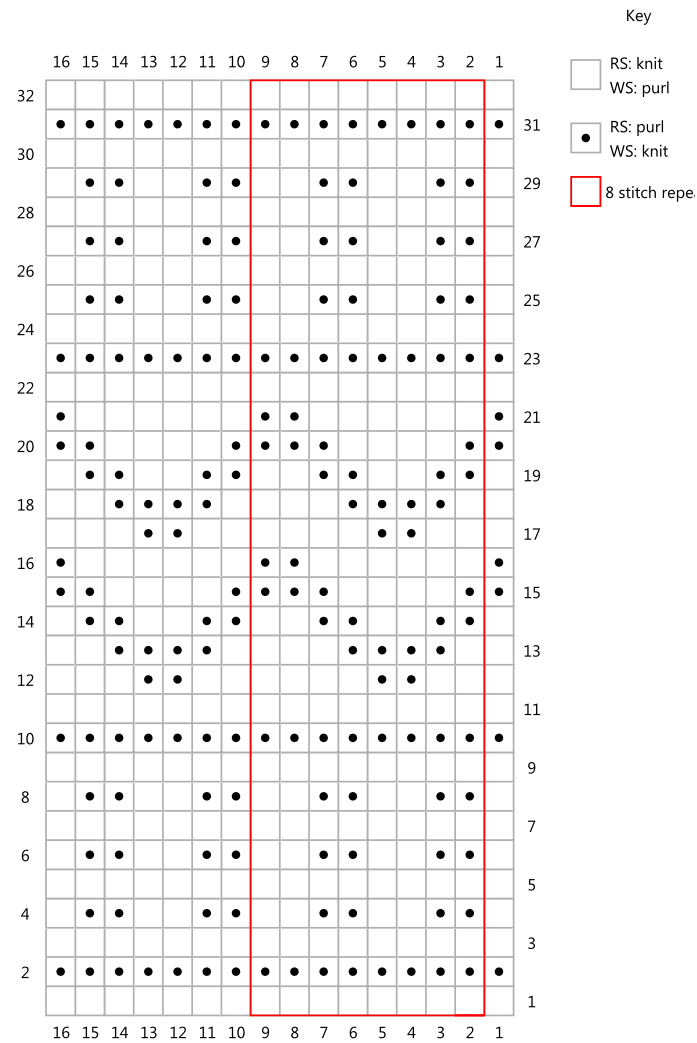


CHART 2

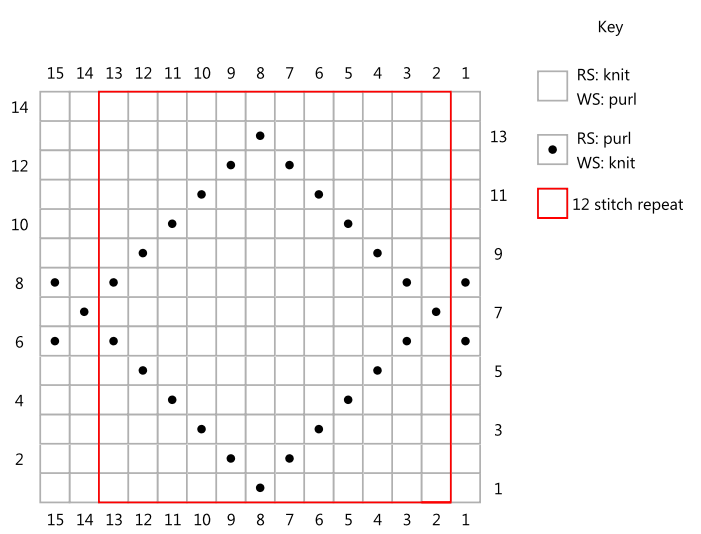
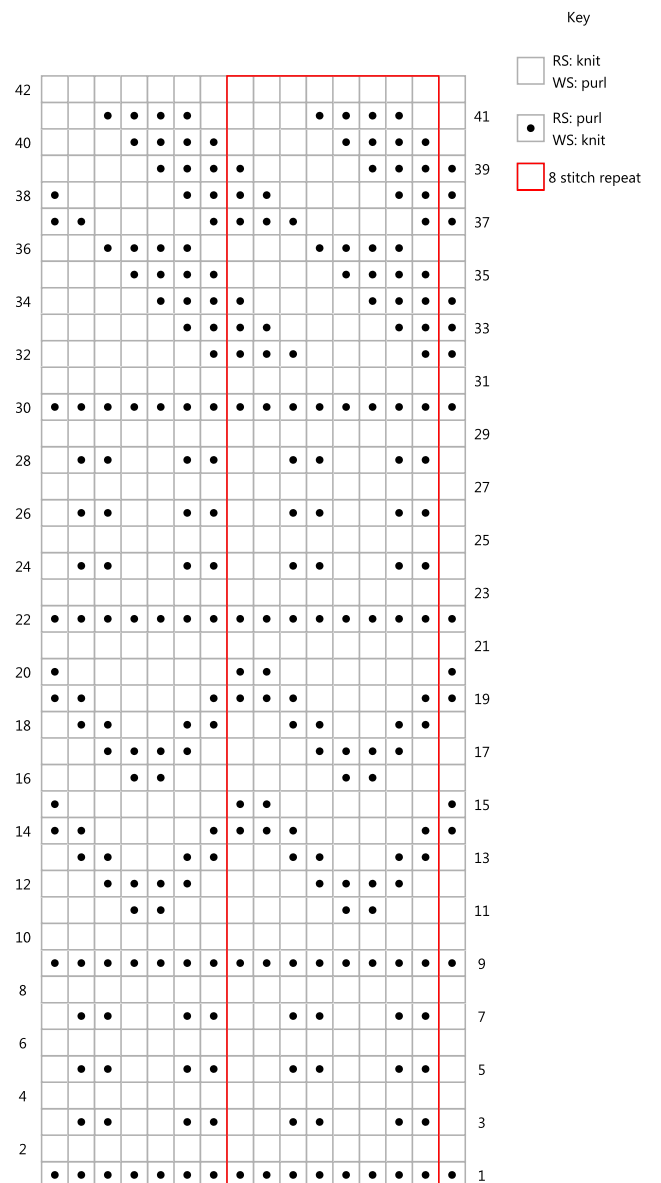


CHART 3



STITCHES & ABBREVIATIONS

alt - alternate
beg - beginning
cm - centimetres
cont - continue
dec - decrease(ing)
DK - double knitting
foll - following
g - grammes
in - inch(es)
inc - increase(ing)
k - knit
mm - millimetres
ml - pick up loop between last and next stitch and knit into the back of this loop
mlp - pick up loop between last and next stitch and purl into the back of this loop
p - purl
patt - pattern
rs - right side
rem - remain(ing)
rep - repeat
st(s) - stitch(es)
tog - together
ws - wrong side
0 - no stitches or times

CARDIGAN

(Worked in one piece to armholes)

Using 3¼mm needles (or circular needle if required) and thumb method cast on 236 [264:288:320:344:368] sts.

1st Row. K1, * k2, p2, rep from * to last 3 sts, k3.

2nd Row. P3, * k2, p2, rep from * to last st, p1.

1st and 2nd rows set rib.

Work in rib for 5cm, (2in), ending with a rs row.

Next Row. P47 [30:16:21:10:11], p2tog, (p45 [27:15:10:12:13], p2tog) 3 [7:15:23:23:23] times, p46 [29:15:21:10:10]. 232 [256:272:296:320:344] sts.

Change to 4mm needles and proceed as follows:-

Next Row. Knit.

This row sets g-st (garter stitch).

Work 2 rows more in g-st.

Next Row. P1, * k2, p2, rep from * to last 3 sts, k2, p1.

Next Row. Knit.

Rep last 2 rows twice more.

Next Row. K16 [17:38:32:29:28], k2tog, (k16 [18:37:31:27:24], k2tog) 11 [11:5:7:9:11] times, k16 [17:37:31:28:28]. 220 [244:266:288:310:332] sts.

Proceed as follows:-

1st Row. Knit.

2nd Row. Purl.

1st and 2nd rows set st-st (stocking stitch).

Cont in st-st until work measures 21 [21:21:22:23:24]cm, (8¼ [8¼:8¼:8¾:9:9½]in), ending with a rs row.

Next Row. P17 [18:38:32:29:29], ml, (p17 [19:38:32:28:25], ml) 11 [11:5:7:9:11] times, p16 [17:38:32:29:28]. 232 [256:272:296:320:344] sts.

Refer to Chart 1 and work from 1st to 31st row.

32nd Row. P115 [127:34:37:40:43], (p2tog) 1 [1:0:0:0:0] times, (mlp) 0 [0:1:1:1:1] times, (p0 [0:34:37:40:43], (mlp) 0 [0:6:6:6:6] times, p115 [127:34:37:40:43]. 231 [255:279:303:327:351] sts.

Refer to Chart 2 and work from 1st to 13th row.

Next Row. P116 [128:34:37:40:43], (mlp) 1 [1:0:0:0:0] times, (p2tog) 0 [0:1:1:1:1] times, (p0 [0:33:36:39:42], p2tog) 0 [0:6:6:6:6] times, p115 [127:33:36:39:42]. 232 [256:272:296:320:344] sts.

Chart 3 sets patt for remainder of garment.

Refer to Chart 3 and keeping continuity of patt as set (throughout), proceed as follows:-

DIVIDE FOR BACK AND FRONTS

Next Row. Patt 55 [60:63:69:74:80], leave these 55 [60:63:69:74:80] sts on a stitch holder for right front.

Cast off 6 [6:8:8:10:10] sts in patt, patt 109 [123:129:141:151:163], leave these 110 [124:130:142:152:164] sts on a stitch holder for back, cast off 6 [6:8:8:10:10] sts in patt, patt 54 [59:62:68:73:79].

LEFT FRONT

Working on these 55 [60:63:69:74:80] sts only proceed as follows:-

SHAPE ARMHOLE

Next Row. Patt.

Next Row. Patt2tog (armhole edge), patt to end. 54 [59:62:68:73:79] sts.

Work 1 [1:3:3:5:5] rows dec 1 st at armhole edge in every row. 53 [58:59:65:68:74] sts.

Work 7 [9:9:13:11:11] rows dec 1 st at armhole edge in next and every foll alt row. 49 [53:54:58:62:68] sts.

Work 38 [42:44:42:46:50] rows without shaping.

SHAPE NECK

Next Row. Cast off 10 [10:10:11:11:11] sts in patt (neck edge), patt to end. 39 [43:44:47:51:57] sts.

Work 8 [8:4:4:4:4] rows dec 1 st at neck edge in every row.

31 [35:40:43:47:53] sts.

Work 7 [7:15:15:15:15] rows dec 1 st at neck edge in next and every foll alt row. 27 [31:32:35:39:45] sts.

Work 1 row without shaping.

SHAPE SHOULDER

Next Row. Cast off 3 [4:4:5:5:6] sts in patt, patt to end. 24 [27:28:30:34:39] sts.

Next Row. Patt.

Next Row. Cast off 4 [4:4:5:5:6] sts in patt, patt to end. 20 [23:24:25:29:33] sts.

Next Row. Patt.

Next Row. Cast off 4 [4:4:5:5:6] sts in patt, patt to end. 16 [19:20:20:24:27] sts.

Next Row. Patt.

Next Row. Cast off 4 [4:5:5:6:6] sts in patt, patt to end. 12 [15:15:15:18:21] sts.

Next Row. Patt.

Next Row. Cast off 4 [5:5:5:6:7] sts in patt, patt to end. 8 [10:10:10:12:14] sts.

Next Row. Patt.

Next Row. Cast off 4 [5:5:5:6:7] sts in patt, patt to end. 4 [5:5:5:6:7] sts.

Next Row. Patt.

Cast off rem 4 [5:5:5:6:7] sts in patt.

BACK

With ws facing, rejoin yarn to 110 [124:130:142:152:164] sts left on a stitch holder for back and proceed as follows:-

Next Row. Patt.

SHAPE ARMHOLES

Next Row. Patt2tog, patt to last 2 sts, patt2tog. 108 [122:128:140:150:162] sts.

Work 1 [1:3:3:5:5] rows dec 1 st at each end of every row.

106 [120:122:134:140:152] sts.

Work 7 [9:9:13:11:11] rows dec 1 st at each end of next and every foll alt row. 98 [110:112:120:128:140] sts.

Work 55 [59:65:63:67:71] rows without shaping.

SHAPE SHOULDERS

Cast off 3 [4:4:5:5:6] sts in patt at beg of next 4 [8:6:14:6:8] rows.

86 [78:88:50:98:92] sts.

Cast off 4 [5:5:0:6:7] sts in patt at beg of next 10 [6:8:0:8:6] rows.

46 [48:48:50:50:50] sts.

Cast off rem 46 [48:48:50:50:50] sts in patt.

RIGHT FRONT

With ws facing rejoin yarn to 55 [60:63:69:74:80] sts left on a stitch holder for right front and proceed as follows:-

Next Row. Patt.

Next Row. Patt to last 2 sts, patt2tog (armhole edge). 54 [59:62:68:73:79] sts.

Work 1 [1:3:3:5:5] rows dec 1 st at armhole edge in every row.

53 [58:59:65:68:74] sts.

Work 7 [9:9:13:11:11] rows dec 1 st at armhole edge in next and every foll alt row. 49 [53:54:58:62:68] sts.

Work 37 [41:43:41:45:49] rows without shaping.

SHAPE NECK

Next Row. Cast off 10 [10:10:11:11:11] sts in patt (neck edge), patt to end. 39 [43:44:47:51:57] sts.

Next Row. Patt.

Work 8 [8:4:4:4:4] rows dec 1 st at neck edge in every row.

31 [35:40:43:47:53] sts.

Work 7 [7:15:15:15:15] rows dec 1 st at neck edge in next and every foll alt row. 27 [31:32:35:39:45] sts.

Work 2 rows without shaping.

SHAPE SHOULDER

Next Row. Cast off 3 [4:4:5:5:6] sts in patt, patt to end. 24 [27:28:30:34:39] sts.

Next Row. Patt.

Next Row. Cast off 4 [4:4:5:5:6] sts in patt, patt to end. 20 [23:24:25:29:33] sts.

Next Row. Patt.

Next Row. Cast off 4 [4:4:5:5:6] sts in patt, patt to end. 16 [19:20:20:24:27] sts.

Next Row. Patt.

Next Row. Cast off 4 [4:5:5:6:6] sts in patt, patt to end. 12 [15:15:15:18:21] sts.

Next Row. Patt.

Next Row. Cast off 4 [5:5:5:6:7] sts in patt, patt to end. 8 [10:10:10:12:14] sts.

Next Row. Patt.

Next Row. Cast off 4 [5:5:5:6:7] sts in patt, patt to end. 4 [5:5:5:6:7] sts.

Next Row. Patt.

Cast off rem 4 [5:5:5:6:7] sts in patt.

SLEEVES (Both alike)

Using 3¼mm needles and thumb method cast on 54 [54:58:58:62:66] sts.

1st Row. * K2, p2, rep from * to last 2 sts, k2.

2nd Row. P2, * k2, p2, rep from * to end.

1st and 2nd rows set 2x2 rib.

Work in 2x2 rib for 5cm, (2in), ending with a rs row.

Next Row. P11 [54:8:7:4:6], (p2tog) 1 [0:0:0:0:0] times, (m1) 0 [0:1:1:1:1] times, (p8 [0:0:0:0:0], p2tog) 3 [0:0:0:0:0] times, (p0 [0:6:4:5:5], m1) 0 [0:7:1:1:1:1] times, p11 [0:8:7:3:5]. 50 [54:66:70:74:78] sts.

Change to 4mm needles.

Working from Chart 1 proceed as follows:-

1st Row. Knit.

Work 2 rows more in g-st.

4th Row. P1, * p2, k2, rep from * to last st, p1.

5th Row. Inc in 1st st, knit to last 2 sts, inc in next st, k1. 52 [56:68:72:76:80] sts.

6th Row. P2, * p2, k2, rep from * to last 2 sts, p2.

From 1st to 6th row sets position of patt.

Starting with 7th row of Chart 1 and keeping continuity of patt as set work 15 rows inc 1 st at each end of 7th and foll 8th row to 56 [60:72:76:80:84] sts, working inc sts in patt.

22nd Row. Purl to end inc 1 st in centre of row. 57 [61:73:75:81:85] sts.

Working in st-st (throughout) inc 1 st at each end of 7th and every foll 8th row to 75 [79:79:89:85:89] sts.

Inc 1 st at each end of every foll 10th row to 77 [81:91:95:99:103] sts.

Cont without shaping until sleeve measures 46 [46:47:48:48:48]cm, (18 [18:18½:19:19:19]in), ending with a ws row.

SHAPE SLEEVE TOP

Cast off 3 [3:4:4:5:5] sts at beg of next 2 rows. 71 [75:83:87:89:93] sts.

Work 8 [6:8:8:8:12] rows dec 1 st at each end of every row. 55 [63:67:71:73:69] sts.

Work 14 [22:24:28:28:24] rows dec 1 st at each end of next and every foll alt row. 41 [41:43:43:45:45] sts.

Work 8 rows dec 1 st at each end of every row. 25 [25:27:27:29:29] sts.

Cast off 5 sts at beg of next 2 rows. 15 [15:17:17:19:19] sts.

Cast off rem 15 [15:17:17:19:19] sts.

RIGHT FRONT BORDER

With rs facing, using 3¼mm needles pick up and knit 11 sts evenly along rib and 119 [127:135:143:147:155] sts evenly along front edge.

130 [138:146:154:158:166] sts.

Starting with 2nd row of 2x2 rib work 5 rows.

Next Row. Rib 2 [2:2:3:3:2], cast off 2 sts, (rib 28 [30:32:26:27:29], cast off 2 sts) 4 [4:4:5:5:5] times, rib 1 [1:1:3:2:1].

Next Row. Rib 2 [2:2:4:3:2], cast on 2 sts, (rib 29 [31:33:27:28:30], cast on 2 sts) 4 [4:4:5:5:5] times, rib 2 [2:2:3:3:2].

Work 5 rows more in rib.

Cast off in rib.

LEFT FRONT BORDER

With rs facing, using 3¼mm needles pick up and knit 119 [127:135:143:147:155] sts evenly along front edge and 11 sts evenly along rib.

130 [138:146:154:158:166] sts.

Starting with 2nd row of 2x2 rib work 12 rows.

Cast off in rib.

COLLAR

Join shoulder seams. With rs facing, using 3¼mm needles and starting halfway across right front border pick up and knit 37 [37:41:42:42:42] sts evenly along right side of neck, 46 [48:48:50:50:50] sts from cast off sts at back of neck and 33 [34:37:38:

38:38] sts evenly along left side of neck. 120 [122:130:134:134:134] sts.

Next Row. P8 [9:12:7:7:7], inc in next st purlways, (p8 [7:7:8:8:8], inc in next st purlways) 13 [15:15:15:15:15] times, p8 [8:13:7:7:7].

134 [138:146:150:150:150] sts.

Starting with 1st row of 2x2 rib cont in rib until collar measures 20cm, (8in), ending with a rs row.

Cast off in rib.

TO MAKE UP

Fold sleeves in half lengthways then placing folds to shoulder seams, sew sleeves in position. Join sleeve seams. Sew on buttons. Fold collar under to rs of neck edge and slip stitch loosely in position around neck edge. Join open ends of collar. Pin out garment to the measurement given. Cover with damp cloths and leave until dry. See ball band for washing and further care instructions.




DESIGN N° 10202



DESIGN N° 10204



DESIGN N° 10206


SIRDAR
WEST YORKSHIRE
Est. 1880

CASHMERE MERINO SILK

DOUBLE KNITTING

CHOOSE YOUR NEXT
PROJECT



DESIGN N° 10207



DESIGN N° 10208



DESIGN N° 10209



DESIGN N° 10212



DESIGN N° 10213

CASHMERE MERINO SILK

DOUBLE KNITTING

CHOOSE YOUR FAVOURITE COLOUR

403 China Blue



402 Candlelit Mink



413 Morning Yellow



417 Saddle Brown