



WOLF TOOTH®

GEOSHIFT ANGLE HEADSET

1 Identify Headset Type

Shift the geometry of your bike to be slacker for stability or steeper for agility



EXTERNAL CUP (EC)

Bearing sits in cup outside of head tube



ZERO STACK (ZS)

Bearing sits in cup inside of head tube



INTEGRATED (IS)

Bearing sits directly in head tube

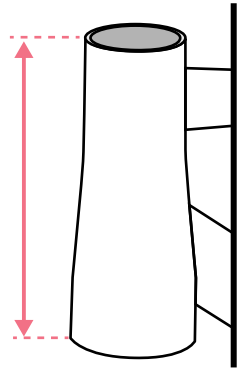


GeoShift Angle Headset is **not compatible** with the Integrated Headset

2 Measure Headtube length

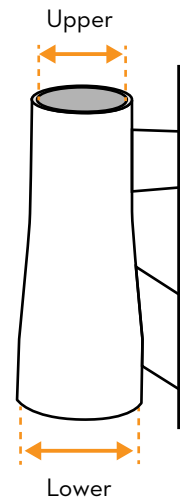
HEADTUBE LENGTH
Rounded to nearest mm

SHORT 90-114 mm
LONG 115-140 mm



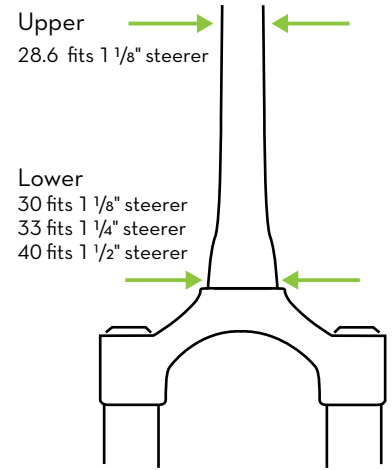
3 Measure Headtube ID

INSIDE DIAMETER (ID)
Rounded to nearest mm



4 Measure Steerer Tube

OUTSIDE DIAMETER (OD)
Rounded to nearest 0.1 mm



5 Find Your Headset

UPPER

ZS

Headset Type

SHORT

90-115 mm
Headtube Length

44

Headtube ID

28.6

Steerer tube OD

LOWER

EC

Headset Type

SHORT

90-115 mm
Headtube Length

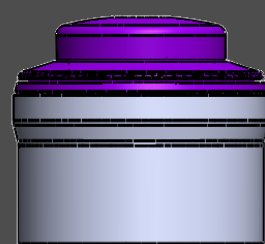
44

Headtube ID

40

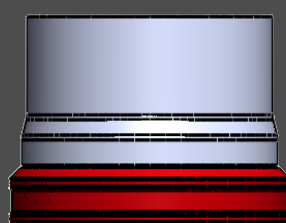
Steerer tube OD

- Choose headset type (EC or ZS)
- Find length of headtube (Short or Long)
- Measure headtube inside diameter
- Measure steerer tube outside diameter

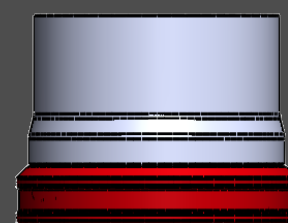


ZS44 | 28.6
SHORT & LONG

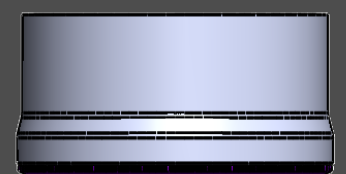
WOLF TOOTH® PERFORMANCE ANGLE HEADSETS +/- 1° or 2°



EC44 | 40
SHORT & LONG



EC49 | 40
SHORT & LONG



ZS56 | 40
SHORT & LONG

Follow us on:



Explore more product solutions at:

wolftoothcomponents.com