



# *Superpro* battery700

Commercial Battery Operated  
Back Pack Vacuum Cleaner

Product & Training Manual

Support: +61 8 9479 1444  
[www.pacvac.com](http://www.pacvac.com)

CAUTION Read the instruction  
manual before using the machine.  
Retain for future reference.



Original  
Instructions





This manual applies to the Superpro battery 700 and should be read in conjunction with the most recent version of the Battery/Charger Product & Training Manual.

### Contents

- General Safety Instructions..... Page 2
- Product Specific Safety Instructions (Machine) ..... Page 2
- Symbol Definitions..... Page 3
- Patents..... Page 3
- Operating Instructions (Installing Battery Pack)..... Page 4
- Operating Instructions (Removing Battery Pack)..... Page 4
- Wear Right..... Page 5
- Operate Right..... Page 6
- Work Right..... Page 7
- Safety and Maintenance Checks..... Page 8
- Troubleshooting Guide..... Page 9
- Service Requirements..... Page 9
- Warranty..... Page 10
- Warranty Notes..... Page 11
- Superpro battery 700 Parts Profile..... Page 12
- Superpro battery 700 Specifications..... Page 13
- Superpro battery 700 Series Harness and Accessories Parts Profile..... Page 14
- Notes..... Page 16

## General Safety Instructions

1. This Manual shall be considered an integral part of the machine and should be carefully looked after for subsequent reference.
2. **WARNING** Read this instruction manual before using this machine and always follow the Safety and Maintenance instructions.
3. **WARNING** This machine is not suitable for picking up hazardous dust.
4. **WARNING** Do not use this machine in wet conditions.
5. **CAUTION** This machine is for indoor use only.
6. **CAUTION** This machine must be stored indoors only.
7. Remove the machine from packaging and ensure it and all its accessories and attachments are present and in perfect condition. Contact the place of purchase immediately in the event of any discrepancies.
8. If the machine has been dropped, damaged, left outdoors or has been exposed to liquids, return it to an Authorised Pacvac Service Centre for a safety check.
9. Keep the machine, battery and battery charger away from heated surfaces.
10. Do not handle the machine, battery pack or battery charger with wet hands.
11. Unplug the battery pack from the machine when not in use, before servicing or before changing filters and attachments.
12. Do not pull or carry the machine by the battery pack or the battery cord.
13. Store in an appropriate place after use to prevent tripping accidents.
14. This appliance is not intended for use by persons (including children) with reduced physical, sensory or mental capabilities, or lack of experience and knowledge, unless they have been given supervision or instruction concerning use of the machine by a person responsible for their safety.
15. Use only the manufacturer's recommended attachments and/or replacement parts.

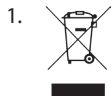
## Product Specific Safety Instructions

### Machine

**PLEASE NOTE:** This should be read in conjunction with the specific safety instructions for the battery and battery charger.

1. This machine is intended for commercial use, for example in hotels, schools, hospitals, factories, shops or offices.
2. Do not restrict the vacuum cleaner's airflow. Maintain the vacuum cleaner regularly so that all filters and openings are free of dust, lint, hair build-up or anything else which may affect airflow. Refer to the safety and maintenance instructions in the Product & Training Manual.
3. Do not use the machine to pick up flammable or combustible liquids, such as petrol etc. and do not use in areas where they may be present.
4. Do not vacuum anything that is burning or smoking such as cigarettes or hot ashes.
5. Do not vacuum up hard or sharp objects such as glass, nails, screws etc.
6. Keep hair, loose clothing, fingers and all parts of the body away from moving parts and openings.
7. **Transportation and Storage**  
For specific battery pack transportation and storage please visit [www.iata.org](http://www.iata.org)

## Symbol Definitions



Meaning of crossed-out wheeled dustbin with line:

Do not dispose of electrical appliances as unsorted municipal waste, use separate collection facilities. Contact your local government for more information. If electrical appliances are disposed of in landfills or dumps, hazardous substances can leak into the groundwater and get into the food chain, damaging your health and wellbeing.

Europe Only - When replacing old appliances with new ones, please check if the retailer is legally obligated to take back your old appliance for disposals



The CE Mark certifies that a product has met EU consumer safety, health or environmental requirements.



Class II, Double Insulated Appliance.



This item can be recycled where correct facilities exist.



Operator's Manual; Operating Instructions



Attention!

RETAIN THESE SAFETY INSTRUCTIONS FOR FURTHER USE.

### Patents

AU Registered Design 326911

EP Registered Design 001617051-0001

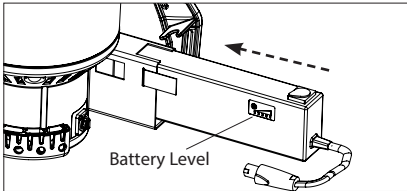
### Motor Thermostat

**IMPORTANT:** The motor is equipped with a thermostat. If for any reason, the vacuum cleaner should over-heat, the thermostat will automatically turn the unit off. Should this occur allow the machine to cool for approximately 30 minutes before restarting.

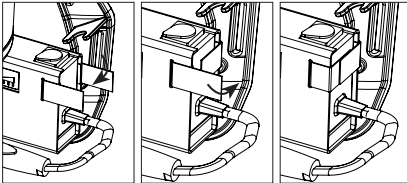
## Operating Instructions

### Installing battery pack to vacuum unit

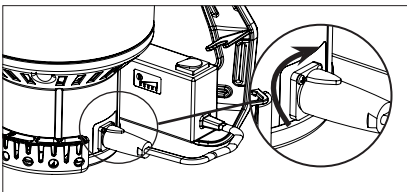
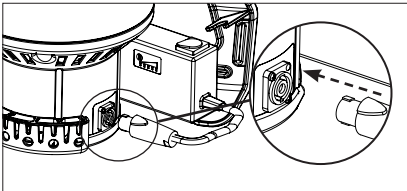
1. Ensure vacuum unit power switch is in the OFF position.
2. Insert battery pack into battery pouch that comes with your machine. Please check battery pack has been inserted so that battery level is showing.



3. Ensure it is securely bound in position with velcro strap.

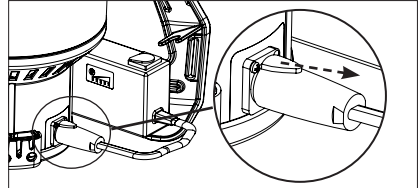


4. Insert battery connector to vacuum unit socket. Turn connector clockwise to lock.

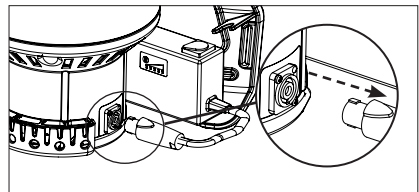
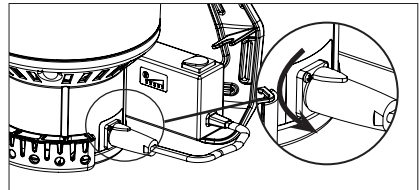


### Removing battery pack from vacuum unit

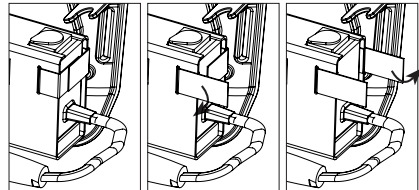
1. Ensure vacuum unit power switch is in the OFF position.
2. Pull tab on connector away from unit.



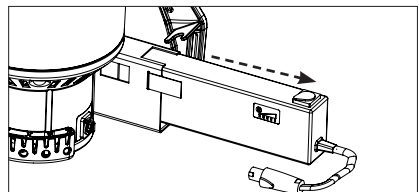
3. Turn the connector anti-clockwise and remove.



4. Detach velcro strap from vacuum unit.



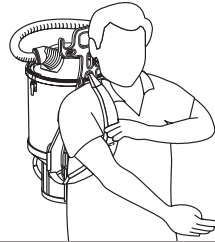
5. Remove battery pack from battery pouch.



## Wear Right

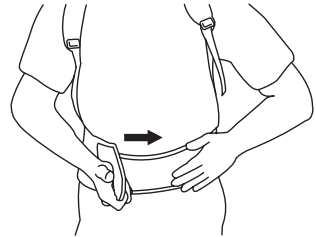
### Step 1:

- Rotate the dome lid to suit left or right handed vacuuming.
- Loosen the shoulder straps.
- Adjust the length at top of shoulder strap (if required).
- Lift the back pack by one shoulder strap.
- Then slide your free arm into the other strap.



### Step 2:

- Tighten the hipband so the machine rests comfortably on your hips.



### Step 3:

- Pull down on shoulder straps for a comfortable fit.
- Adjust position and connect chest strap to secure back pack.

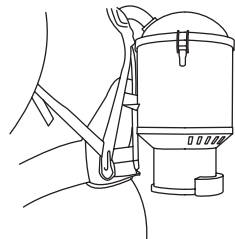


### Step 4:

- Make sure the harness is resting on your hips.

#### IMPORTANT TIP:

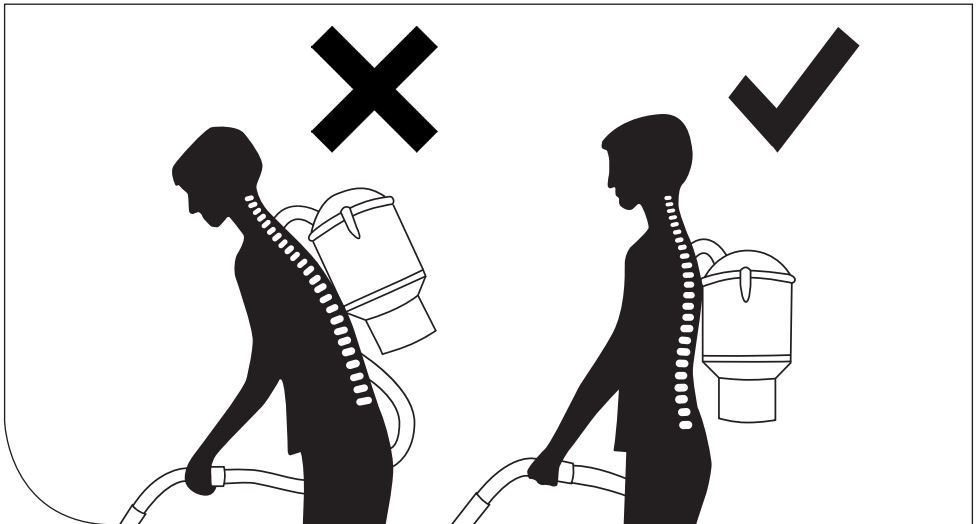
If the back pack feels heavy or uncomfortable, it is likely you are not wearing it correctly. Contact Pacvac for further advice.



## Operate Right

How to vacuum easier and faster with no back strain.

1. Stand upright, with the bent hand piece section parallel to the floor.
2. Hold the bent hand piece with one hand at a comfortable arm's length.
3. Use easy underarm swinging motion when detail cleaning and short dabs when spot cleaning, always standing upright.
4. Remove back pack by releasing the chest strap and hipband. Slide one of the straps off the shoulder, while raising the other arm/shoulder to hold strap in place. Slowly lower the shoulder and lower the back pack to the floor, do not drop.





## Work Right

LOOK AT THE LAYOUT (refer to the Fishbone Method below)

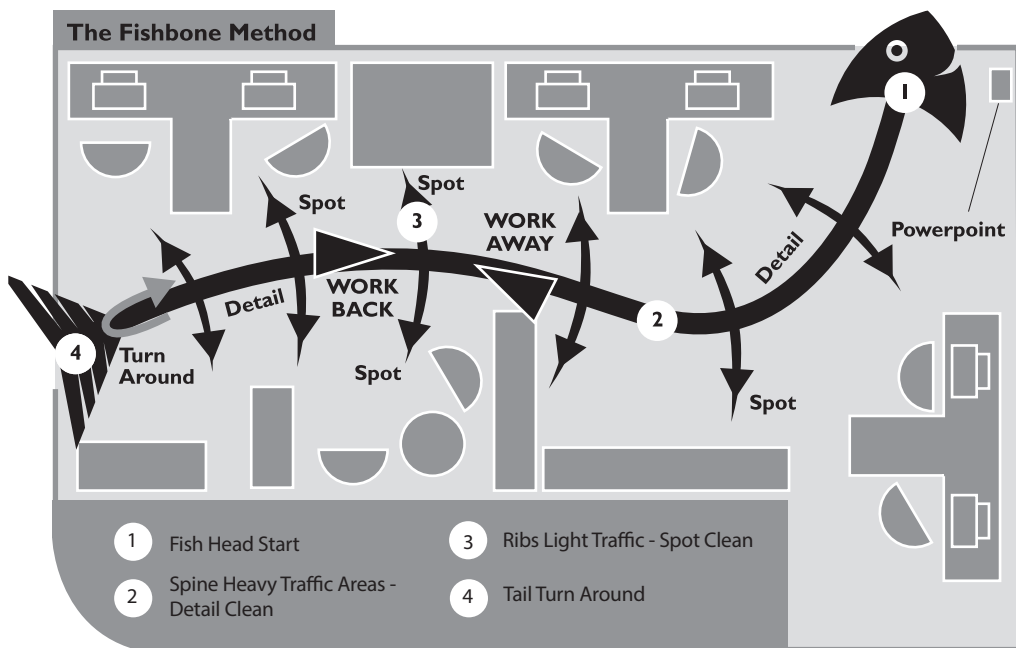
- Check the room layout (position of desks, tables, chairs, fittings etc.)
- Check the condition of the floor - how dirty it is on a scale of 1 to 10.

PLAN THE PROCESS

- See in your mind the fishbone method over the entire area or room to be cleaned.
- Decide which areas are to be detail cleaned (the spine), or spot cleaned (the ribs).

CLEAN SMARTER

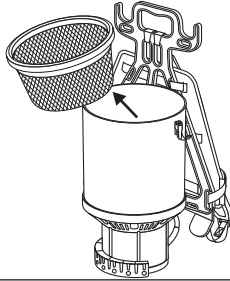
- Work one side of the fishbone towards tail. Then back the other side towards head.
- Work to the plan - long strokes for the detail clean area and short dabs for the spot cleans.



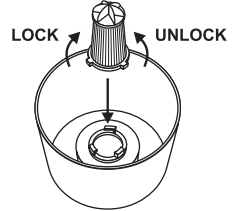
**Safety and Maintenance Checks**

**DAILY**

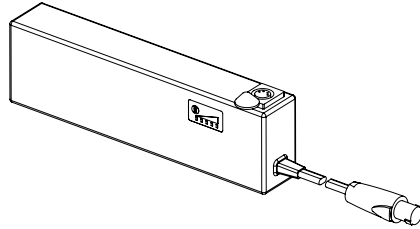
1. Remove, empty and clean dust bag.



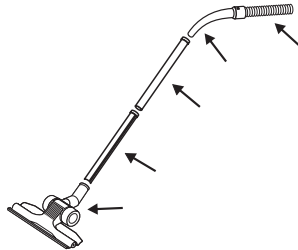
2. Remove and tap gently to clean Hypercone HEPA filter.



3. Check the battery pack and charger for any sign of damage to cables or possible leakage. If found do not use.

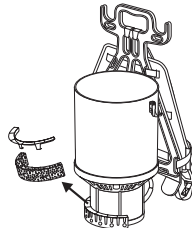


4. Check the floor tool, wand, bent hand piece and hose for any obstructions.



**WEEKLY**

Remove and clean external motor filter.



NOTE: Any other servicing should be performed by an authorised technician.

## Troubleshooting

PROBLEM:	CAUSE:	SOLUTION:
MACHINE		
Back Pack not working	Battery not properly connected to back pack.	Check and re-connect connector.
	Battery connected to back pack while the switch was in the ON position.	Disconnect battery pack from back pack. Turn switch to OFF position. Reconnect battery back pack.
	Battery pack power depleted or battery pack is damaged.	Check for damage. If no sign of damage then charge the battery.
	Battery pack shuts off due to abnormally high motor temperature.	Turn machine off and ensure hose is unblocked. Ensure dust bag is clean. After 30 minutes the machine should be ready for use. If not, contact a Pacvac Authorised Service Centre.
Back Pack has no/poor suction	Dust bag full.	Remove, empty and clean dust bag.
	Dust bag not installed correctly.	Remove and empty dust bag making sure the rubber edging is correctly fitted around the canister.
	Hose not installed correctly.	Reconnect hose and ensure it is correctly sealed.
	Blockages.	Remove hose, wand and floor tools; remove any blockages.
	Filters blocked.	Replace / clean filter.



### Service Requirements

Our products are designed and built to be functional and durable. For information on use and maintenance please read the Product & Training Manual thoroughly.

Should you require servicing contact your nearest authorised Pacvac Service Centre.



[www.pacvac.com](http://www.pacvac.com)



+61 8 9479 1444



[support@pacvac.com](mailto:support@pacvac.com)

## Warranty

Your Pacvac Pty Ltd (Pacvac) product has been manufactured to meet our highest quality standards. We urge you to take good care of your product and be sure to follow instructions carefully. This will provide you with the best possible performance and lifespan of the product.

The inclusion of the following paragraph is a requirement by Australian Law. It explains that consumers have rights by law regardless of any warranties provided or not by a manufacturer or supplier.

“Our goods come with guarantees that cannot be excluded under the Australian Consumer Law. You are entitled to a replacement or refund for a major failure and for compensation for any other reasonably foreseeable loss or damage. You are also entitled to have the goods repaired or replaced if the goods fail to be of acceptable quality and the failure does not amount to a major failure.”

In addition to guarantees under Australian Consumer Law, Pacvac warrants all machines and their components against faulty material and/or workmanship for a period of one year for the battery and battery charger and two years on the rest of the machine from the date of purchase by the original consumer.

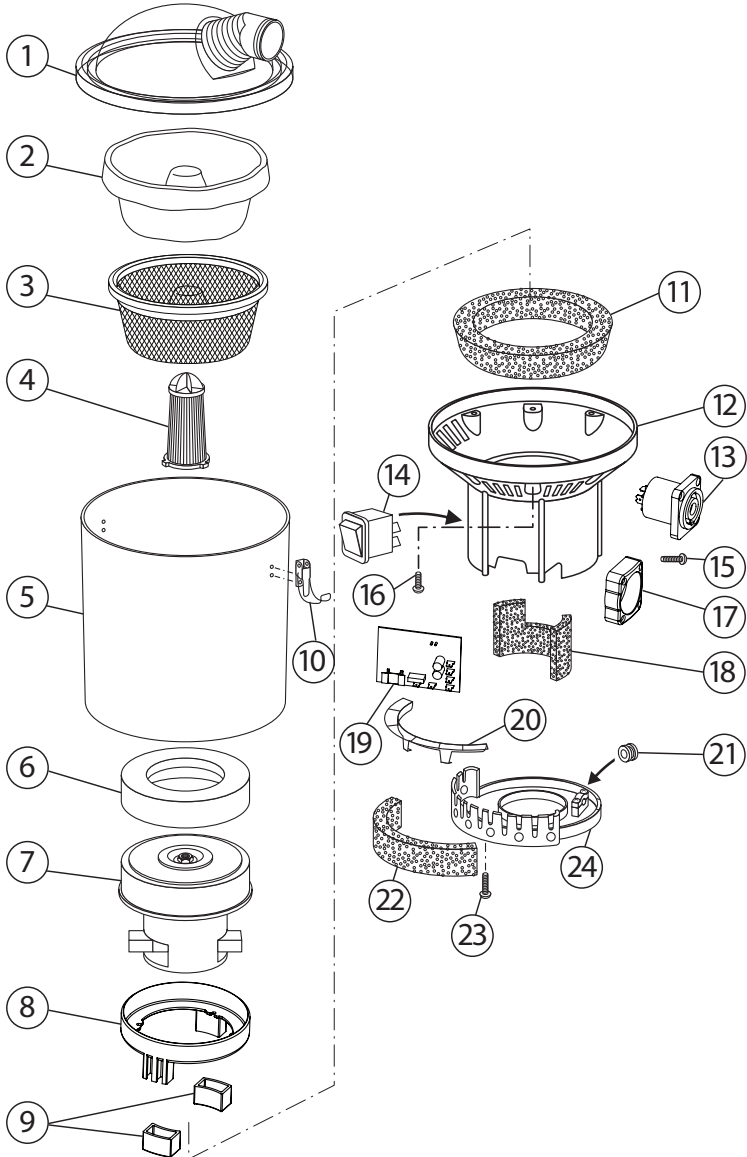
The following explains conditions and what to do in the event of a claim:

- Pacvac will replace parts determined as faulty however this does not cover reasonable wear through normal use of any consumable parts, such as but not limited to, bags, filters, hoses, batteries, carbon brushes and floor tools etc.
- Warranty does not cover any machine or component that has been altered, abused, neglected, modified, used with non-genuine Pacvac components or has not been used and maintained as indicated in the Product and Training Manual.
- Warranty repairs can only be carried out by an authorised Pacvac Distributor or Service Centre. Visit our website or call on the number above for your nearest location.
- All reasonable expenses associated with returning goods for a warranty claim are the consumer's responsibility.
- Claims related to the machine only (includes the body and motor; excludes battery and charger) must be made within two years of the date of purchase and proof of purchase must be supplied with the claim.
- To make a claim under warranty, take the product with proof of purchase to the place of purchase. In the event the place of purchase does not satisfactorily rectify the matter, please contact Pacvac using the contact details above.

Warranty Notes

# Superpro battery700 Parts Profile

Product Number: 201303-001A



Quote these part numbers when ordering spare parts.

No.	Part Name	Part No.
1.	Dome lid	KC251
2.	Hypercone paper bag (Packet of 5)	AF101
3.	Hypercone dust bag	KC502HC
4.	Hypercone HEPA filter	KC270
5.	Main vacuum canister	KC252B
6.	Motor gasket	KC253C
7.	Motor 400W 24V DC single stage flow through	UP119
8.	UDS Motor spacer	PV276
9.	UDS Clamping boot	PV277
10.	Toggle latch	KC131
11.	Intermediate noise insulation	PV254
12.	Intermediate housing	KC256B
13.	Power Socket	KC430
14.	Switch rocker 12A 250V	VS261
15.	Screw 3x12 countersunk (plastite)	N/A
16.	Screw 5x20 (plastite)	PV298
17.	Connector Spacer	KC410
18.	Noise insulation (motor)	PV255
19.	PCB	KC400
20.	Motor filter cage	KC264
21.	Hole plug	KC262P
22.	External motor filter	PV259
23.	Screw 6x25	N/A
24.	Bottom cap	KC258

## Specifications

Volts / Frequency: 24V DC

Motor: 400W 24V DC single stage flow through

Noise Level: 62.5dB(A) ± 3dB(A) (at 1.5m)

Filtration: 4 stage

Airflow Volume: 29 litres per sec

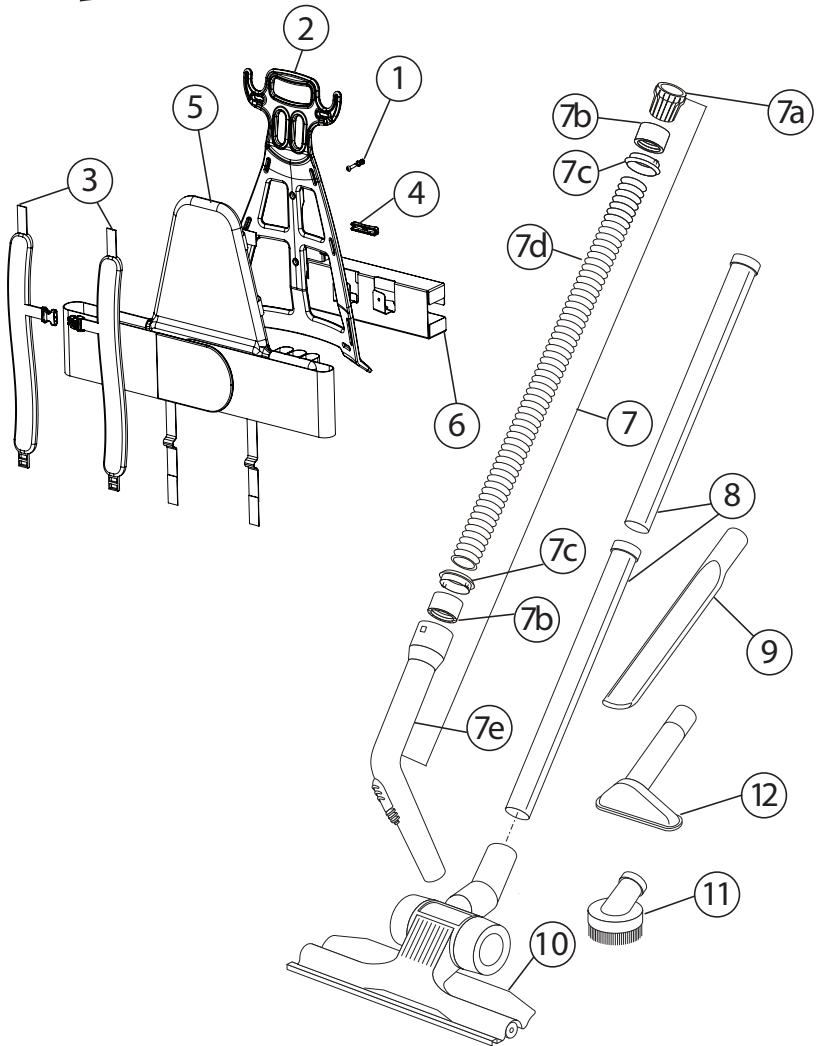
Tank Capacity: 5 litres

Weight: 6.2kgs (with battery pack, excluding hose)

Vibration Level: <2.5m/s<sup>2</sup>

Technical specifications, part numbers and parts profiles are subject to change without notice.

**Superpro battery700** Harness and Accessories Parts Profile





Quote these part numbers when ordering spare parts.

No.	Part Name	Part No.
1.	Bolt 5x20	N/A
	Nut 5mm nyloc	N/A
	Washer 3/16 x 3/4 N/A	
	Washer 3/16 x 7/16	N/A
2.	Carrying frame	KC120
3.	Shoulder strap pair	KC121
4.	Frame spacer	KC420
5.	Back support padding	KC263
6.	Battery pack holder	KC450
7.	Hose complete 32mm 1.2m	KC320
7a.	Machine end connector 32mm	KC200
7b.	Hose cuff hull 32mm	UA914
7c.	Hose clip ring 32mm	UA915
7d.	Hose 32mm 1.2m	KC350
7e.	Bent hand piece 32mm	KC330
8.	Two piece wand 32mm	KC9092
9.	Crevice tool 32mm	KC911
10.	Combination floor tool with wheels 32mm x 285mm	UA908W
11.	Dusting brush 32mm	KC910
12.	Upholstery tool 32mm	KC912

Technical specifications, part numbers and parts profiles are subject to change without notice.

Notes

Notes



## Service & Help

For service and help contact Pacvac on +61 8 9479 1444 or email [support@pacvac.com](mailto:support@pacvac.com)

Alternatively visit our website at [www.pacvac.com](http://www.pacvac.com) for a list of your nearest Retailers and Service Centres.