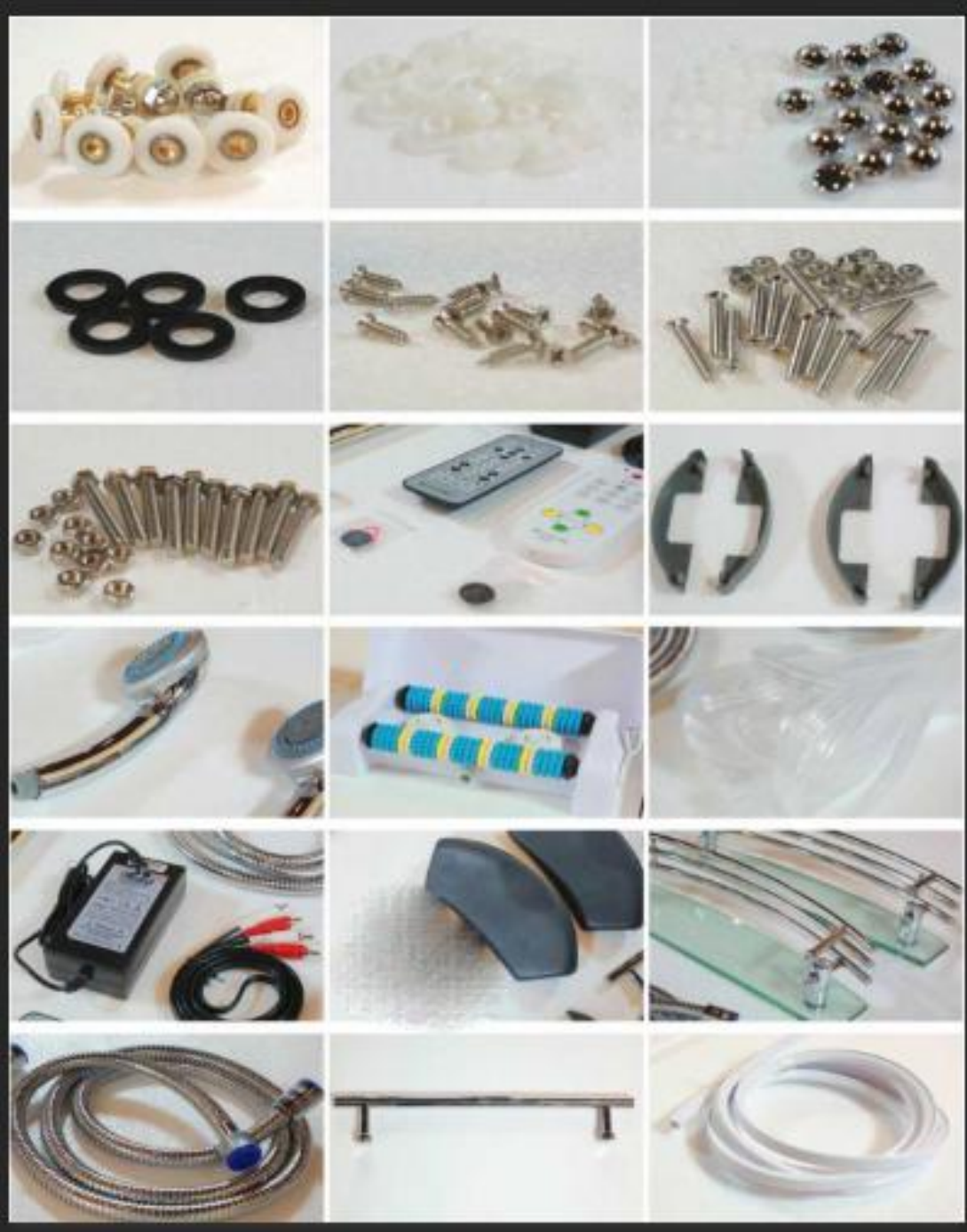


Spare parts list



Tools to be used in installation



Installation steps

Step 1 # Place the bathtub in the right place

Step 2 # Assembly of Bending Guide

Step 3 # Fixed glass on both sides

Step 4 # Install the stainless steel guide rail

Step 5# The assembled frame is lifted up to the bathtub.

Step 6# Installation of black grease glass

Step 7# Install backplane

Step 8 # Install top cover

Step 9 # Installation of flower sprinkler bracket

Step 10 # Fixed top cover

Step 11 # Install sliding glass

Step 12 # Fixed adhesive tape

Step 13 # Assemble the door handle (now the S handle)

Step 14 # Installation rack and towel rack

Step 15# Installation of flower sprinkler bracket

Step 16 # Install foot massage

Step 17 # Installation hand sprinkler

Step 18# Mirror installation

Step 19 #TV installation

Wire connection

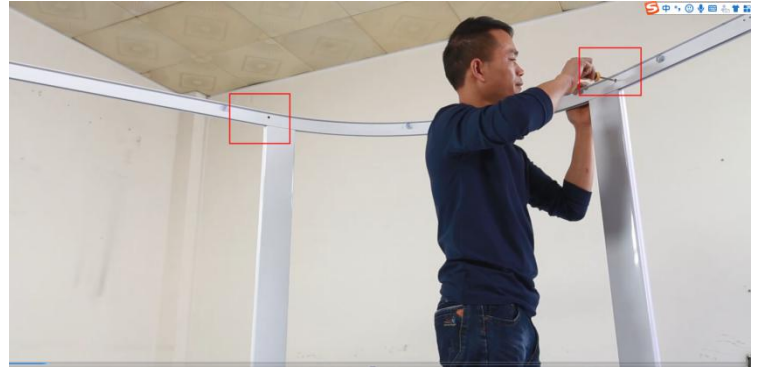
Hose connection

Add glass glue to the back of the back and the bathtub to

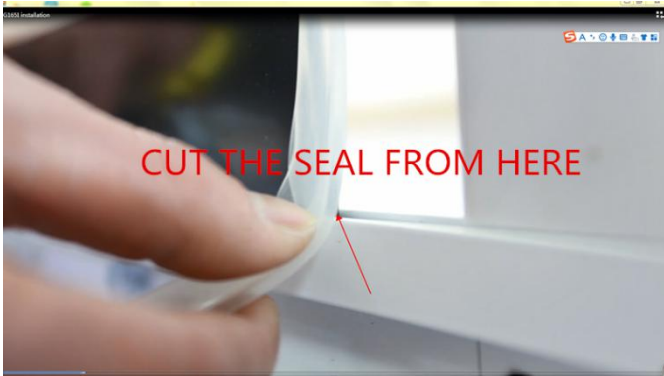
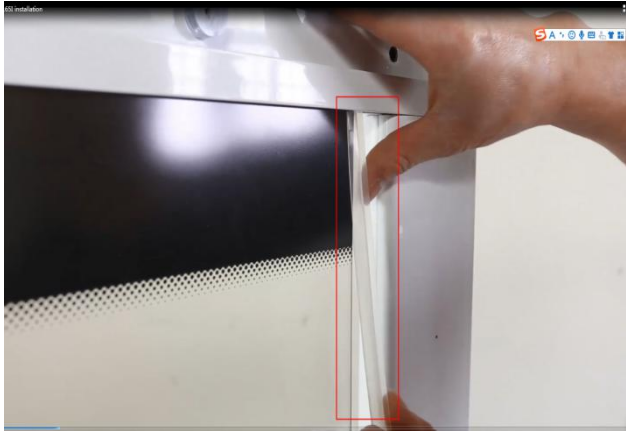
Step 1 # Place the bathtub in the right place



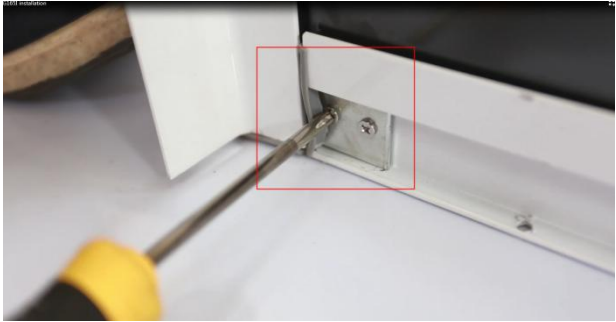
Step 2 # Assembly of Bending Guide



Step 3 # Fixed glass on both sides



Step 4#Install the stainless steel guide rail

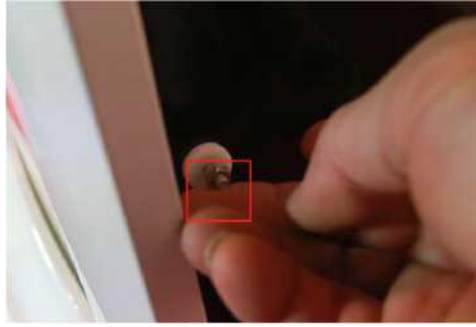


Step 5# The assembled frame is lifted up to the bathtub.



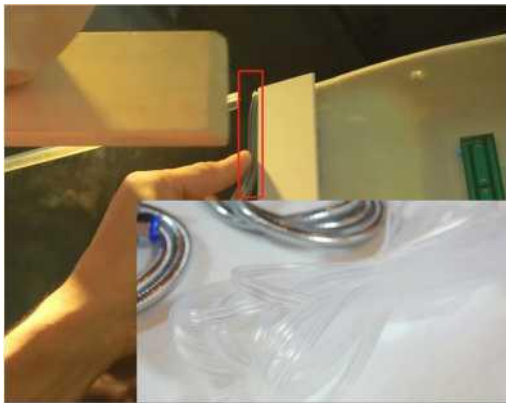
Step 6 # Installation of black grease glass





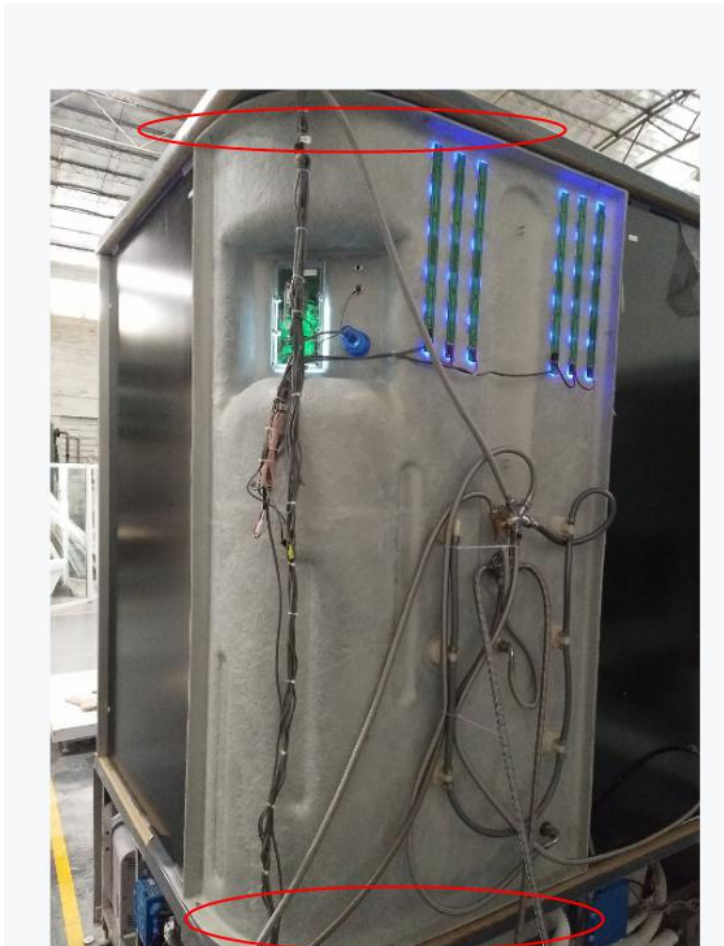
Step 7 # Install backplane



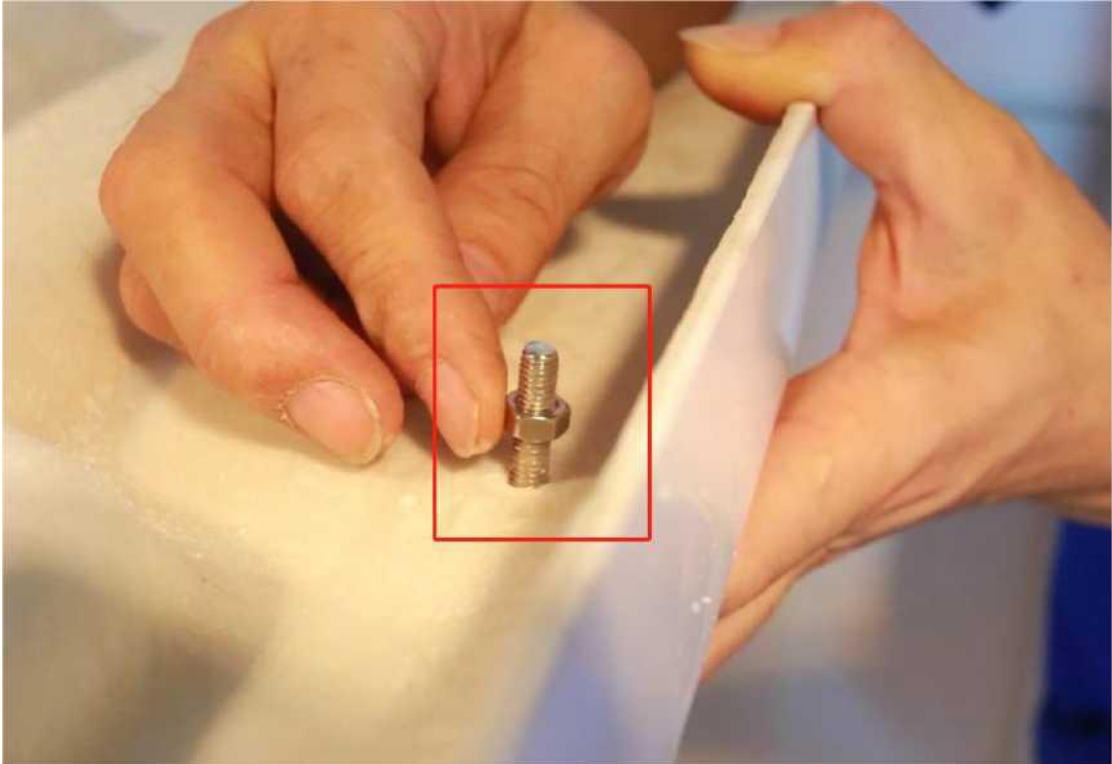




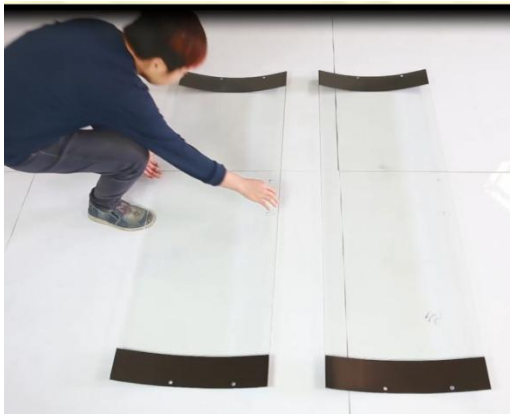
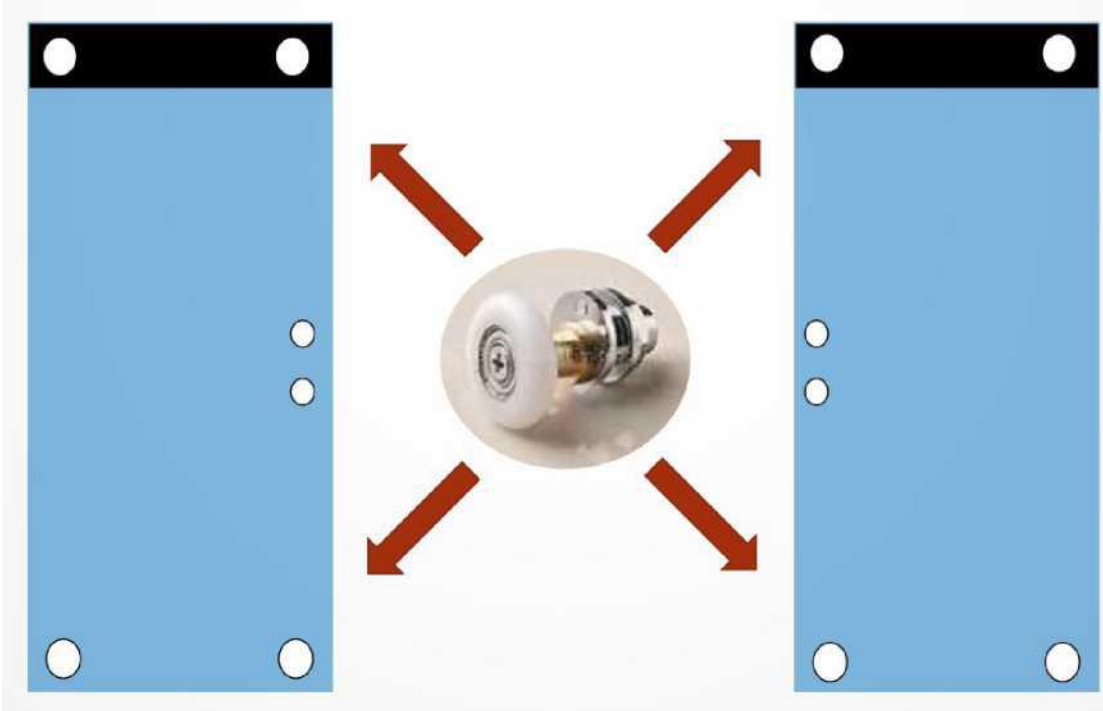
Step 8 # Install top cover

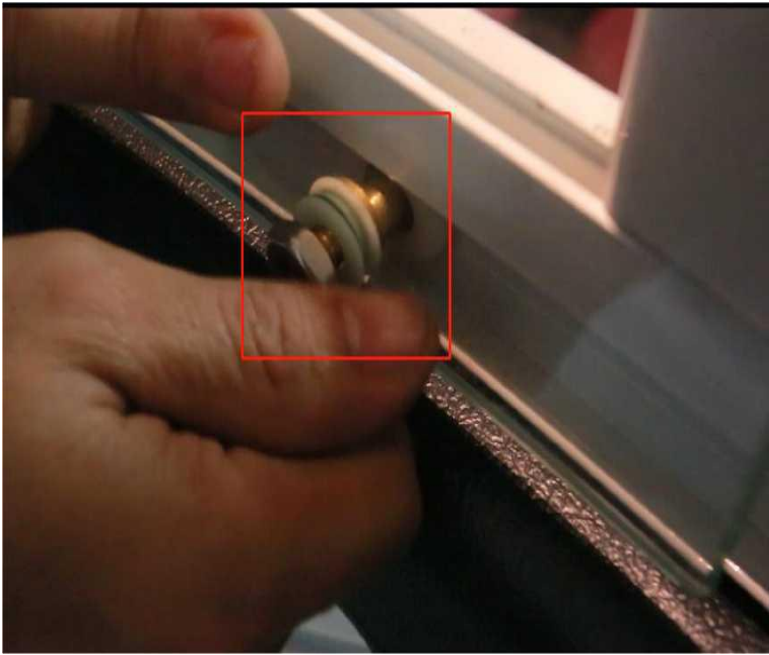
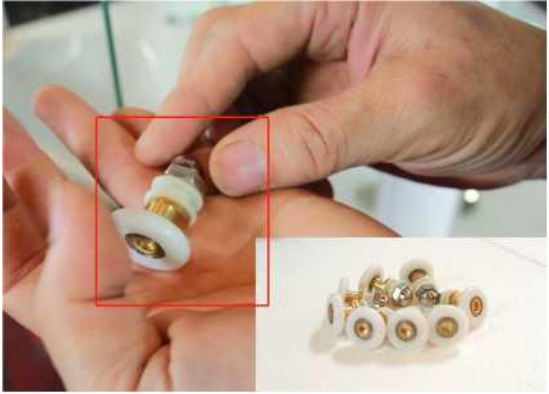
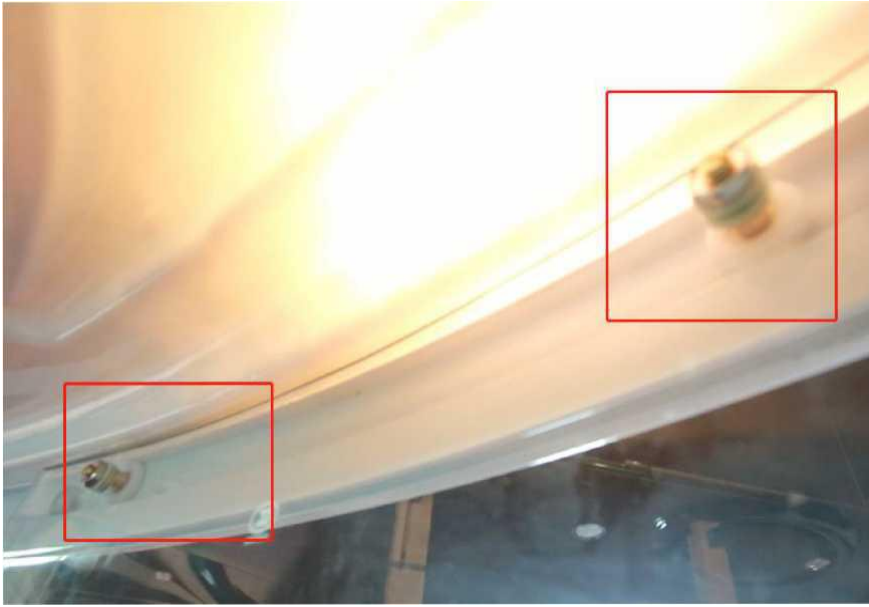


Step 9 # Fixed top cover



Step 10 # Install sliding glass



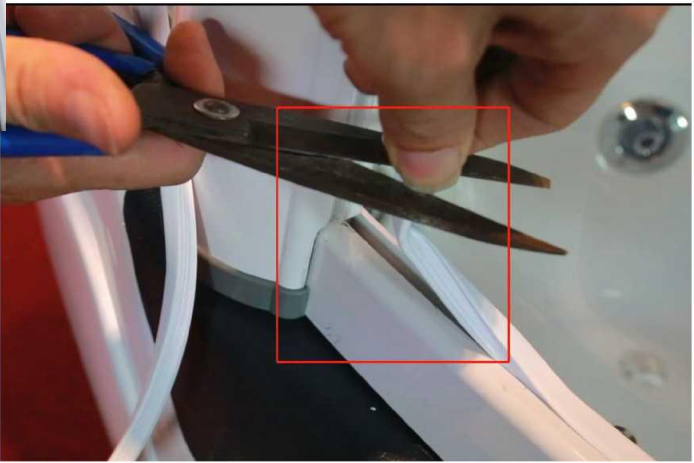


Step 11#Install the seal

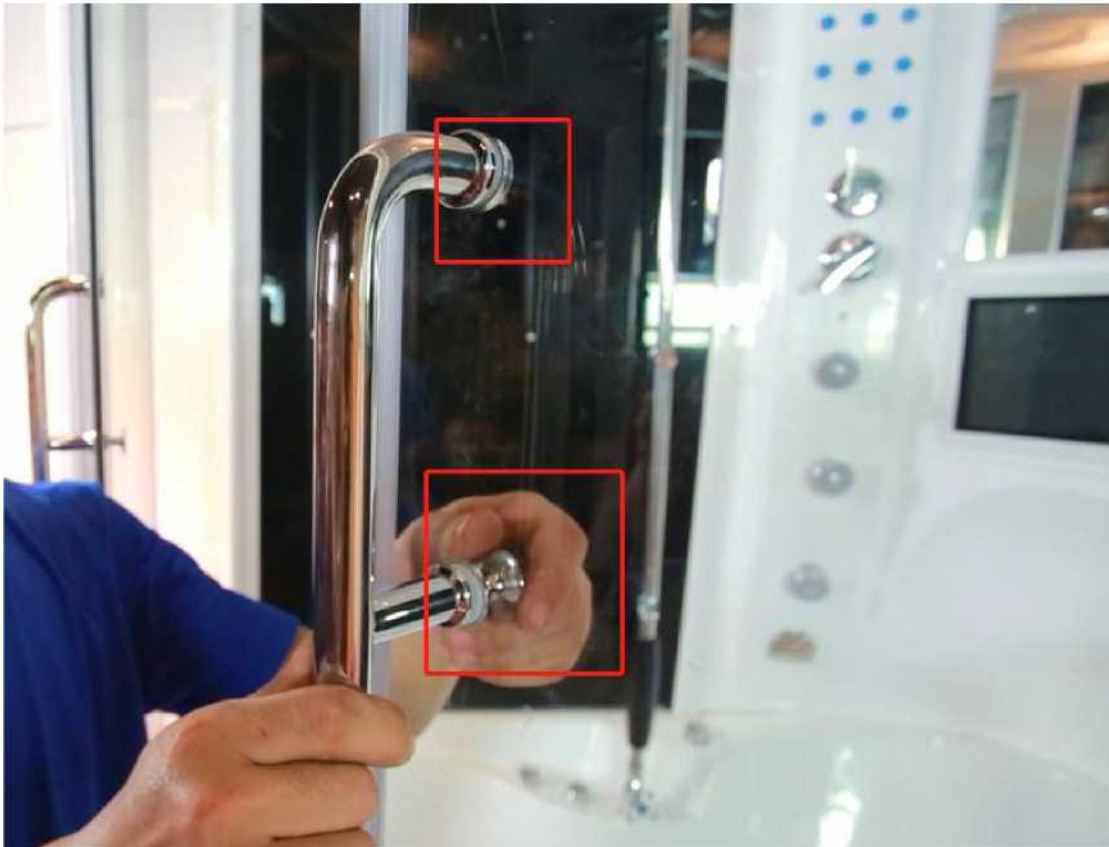


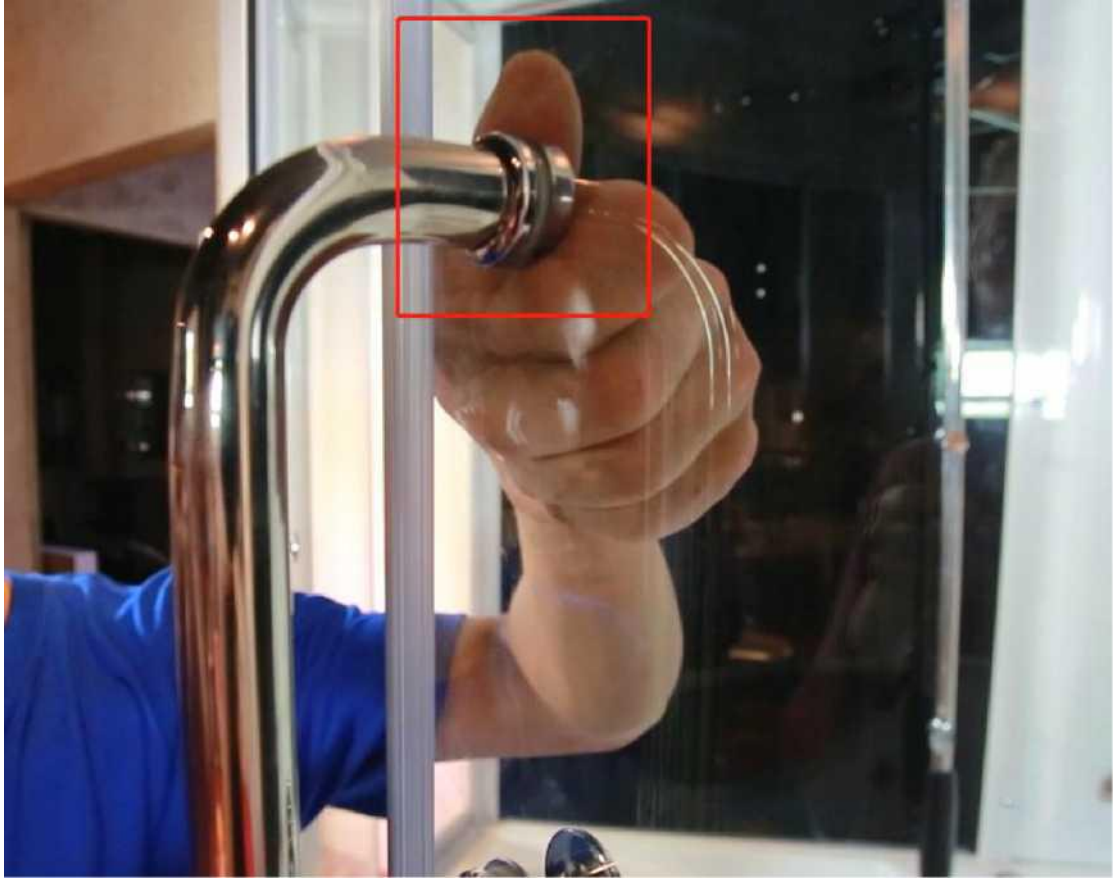


Step 12# Fixed adhesive tape

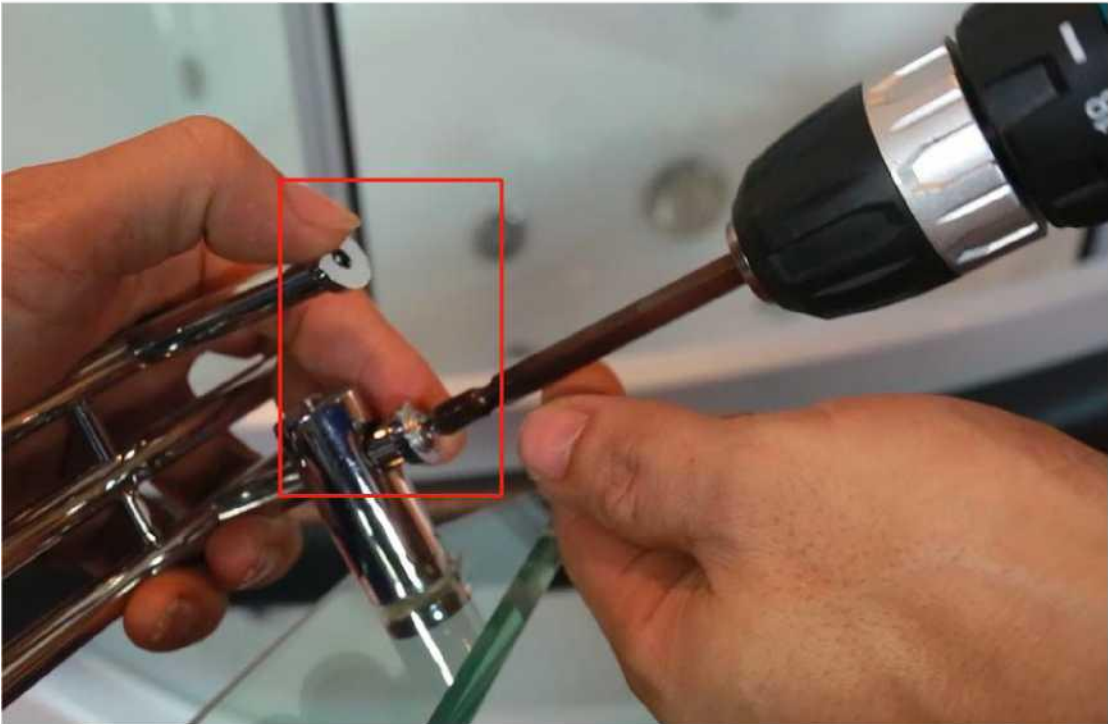
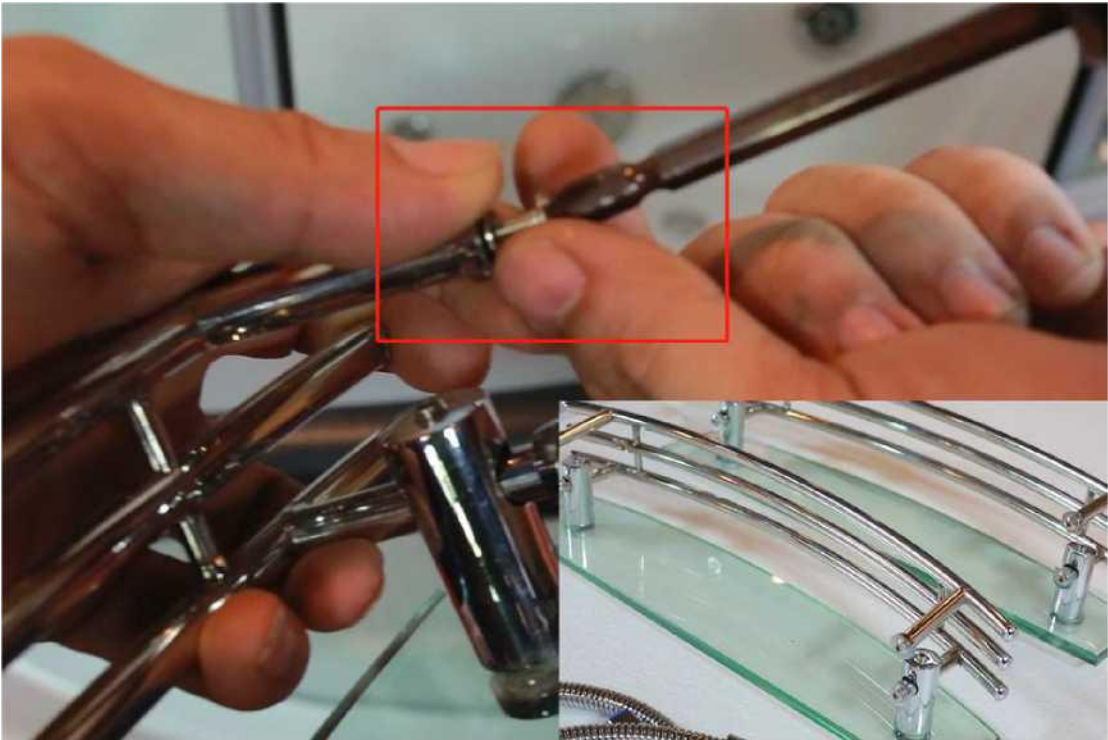


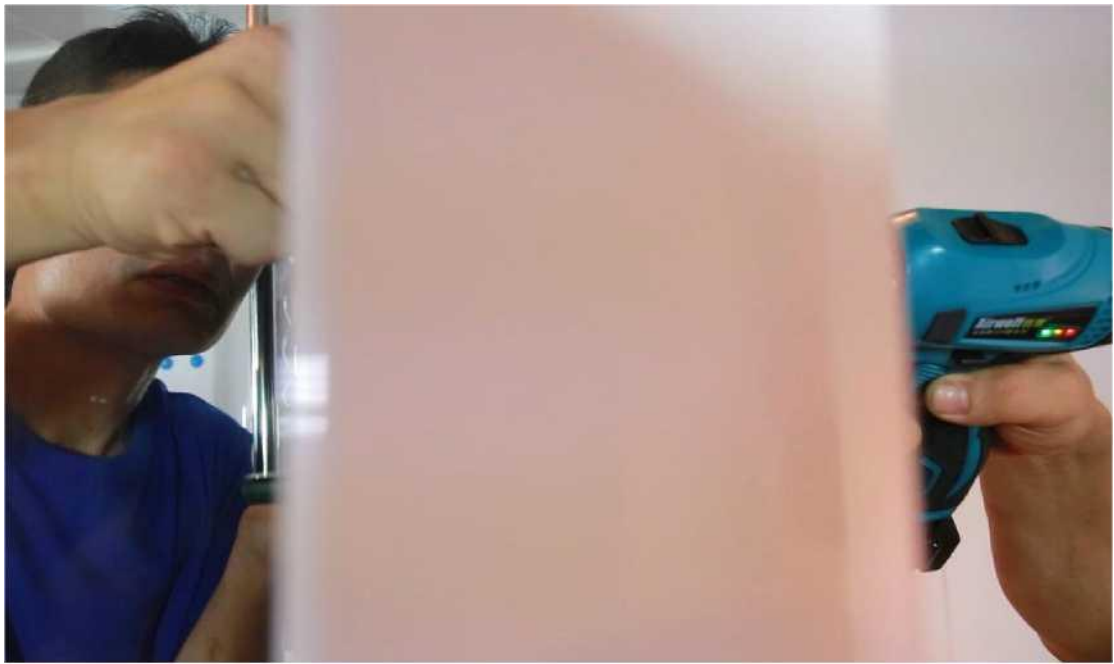
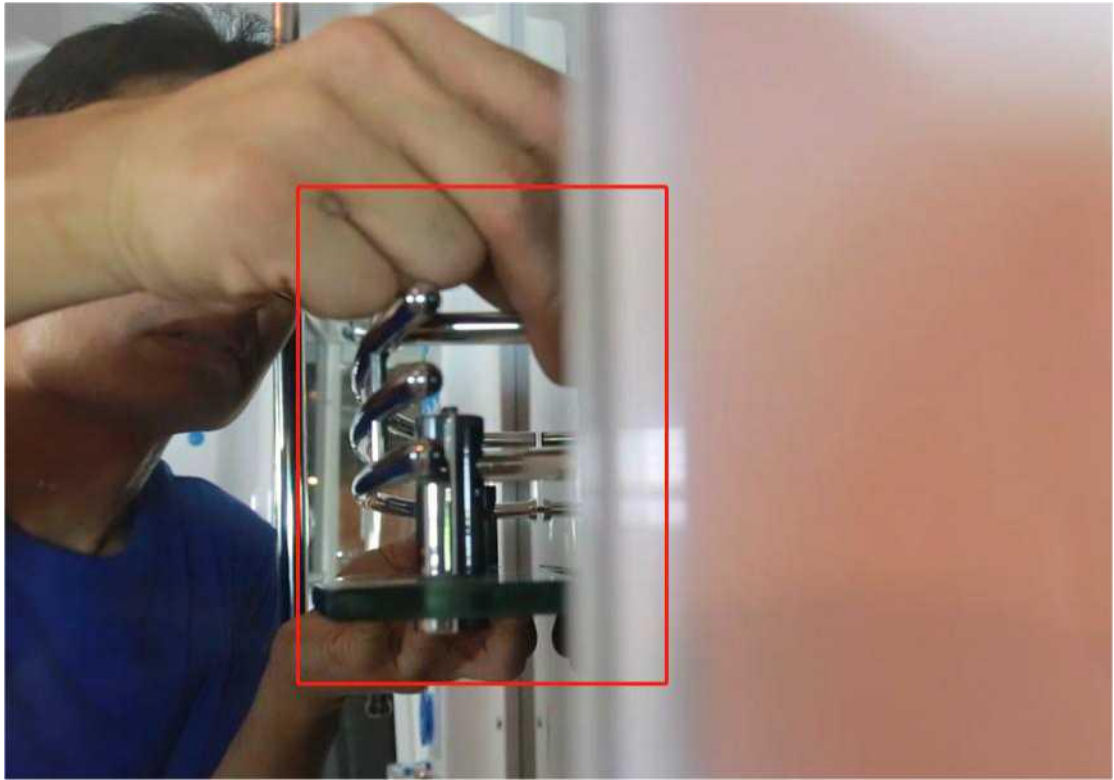
Step 13# Assemble the door handle (now the S handle)

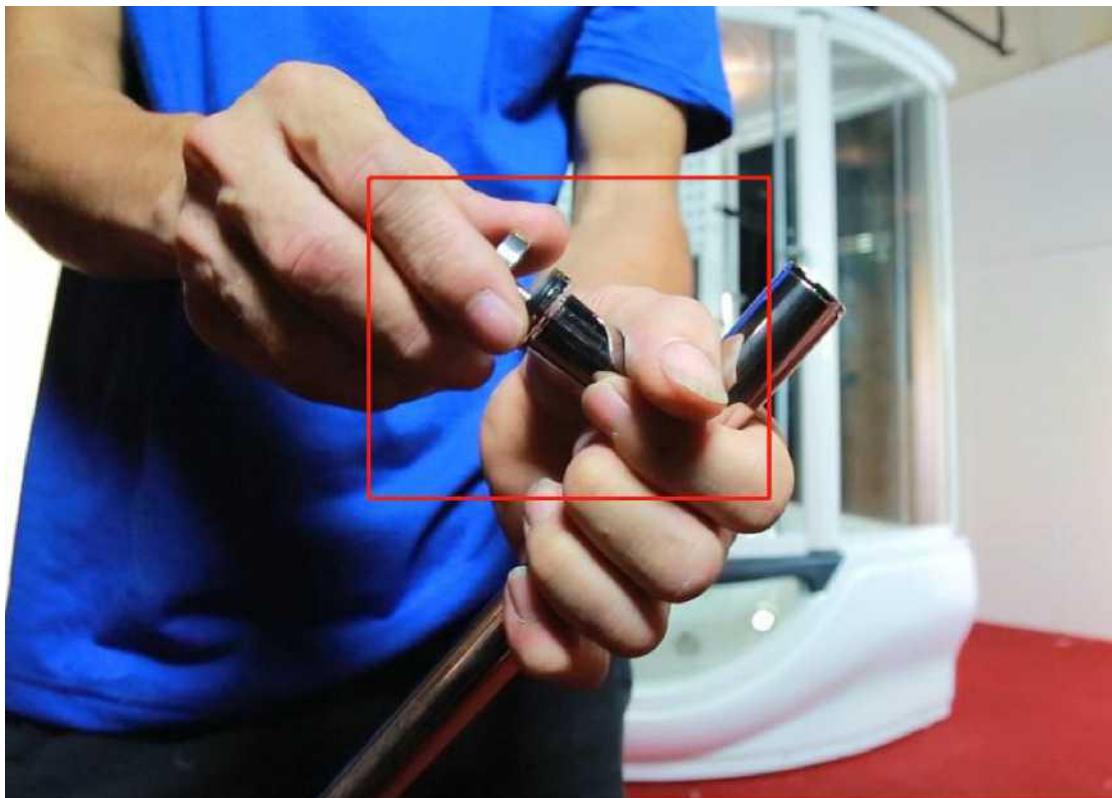
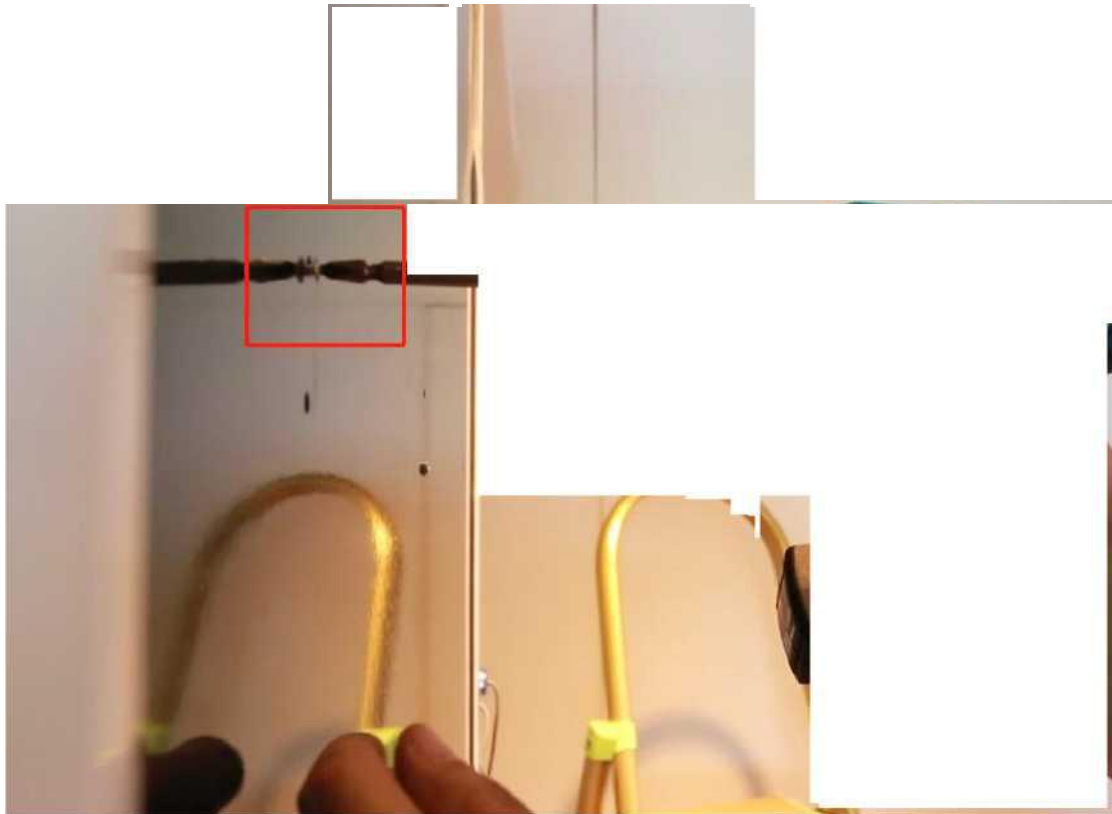


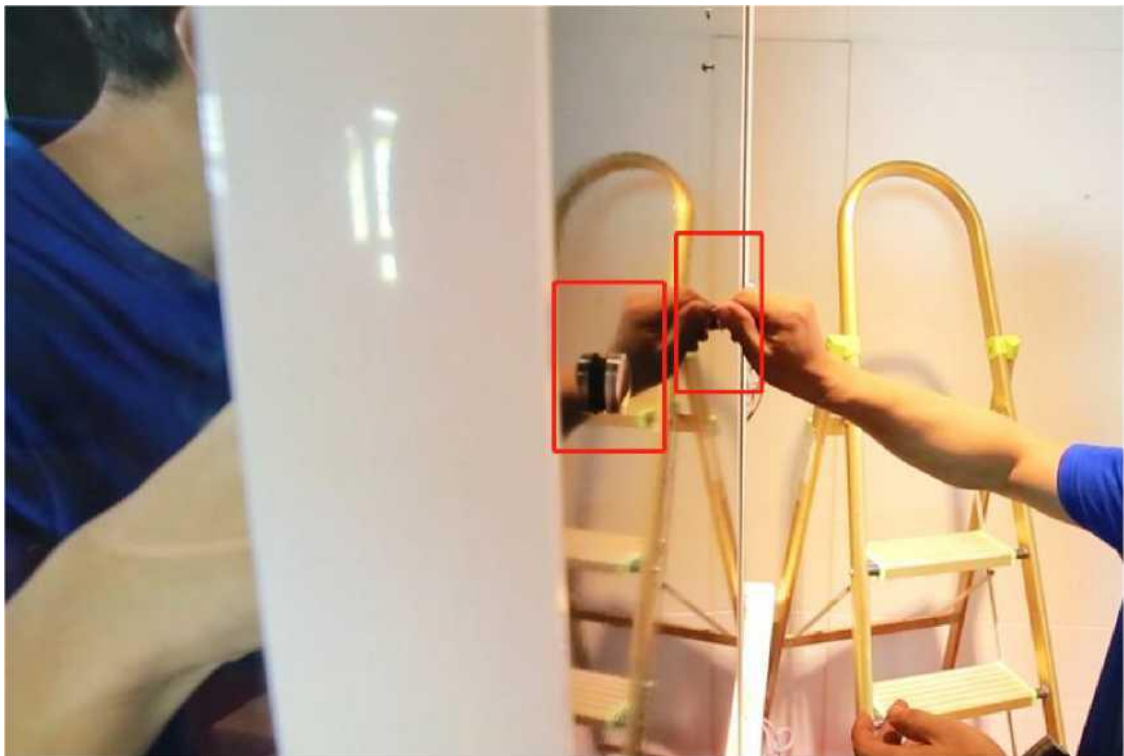


Step 14 # Installation rack and towel rack

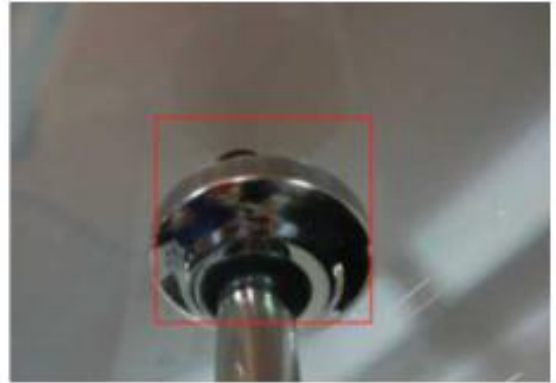




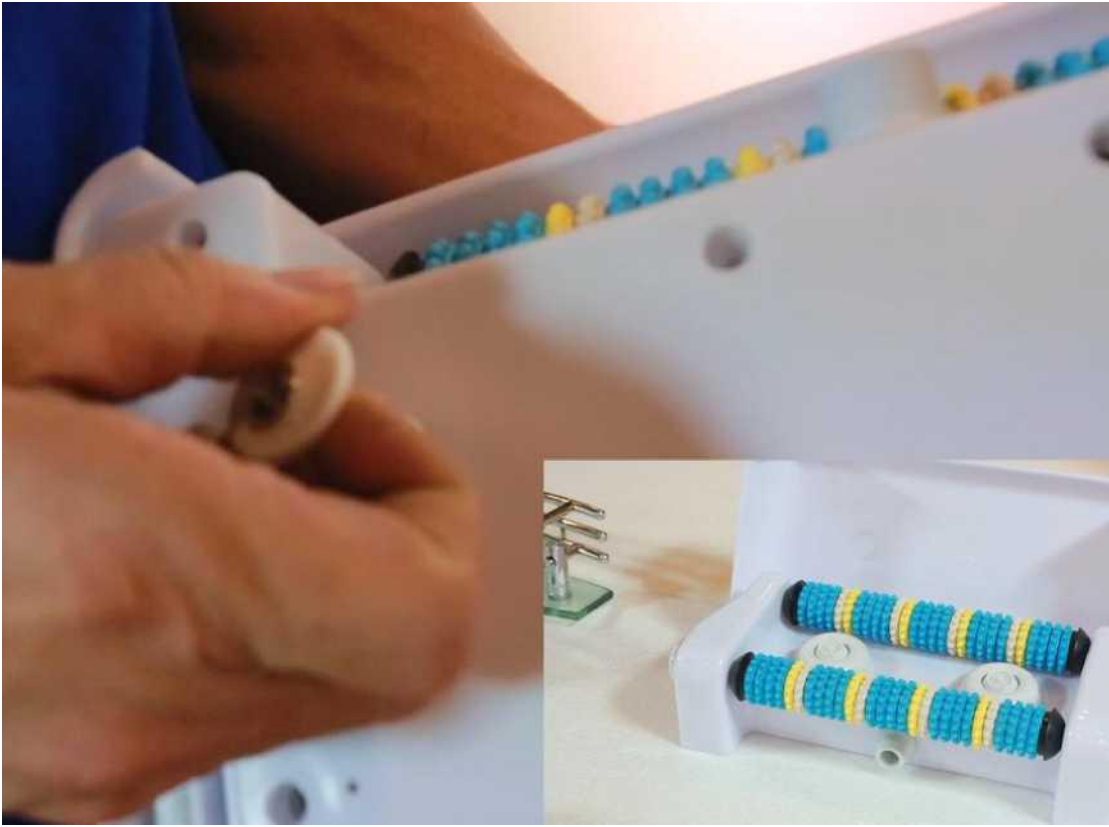
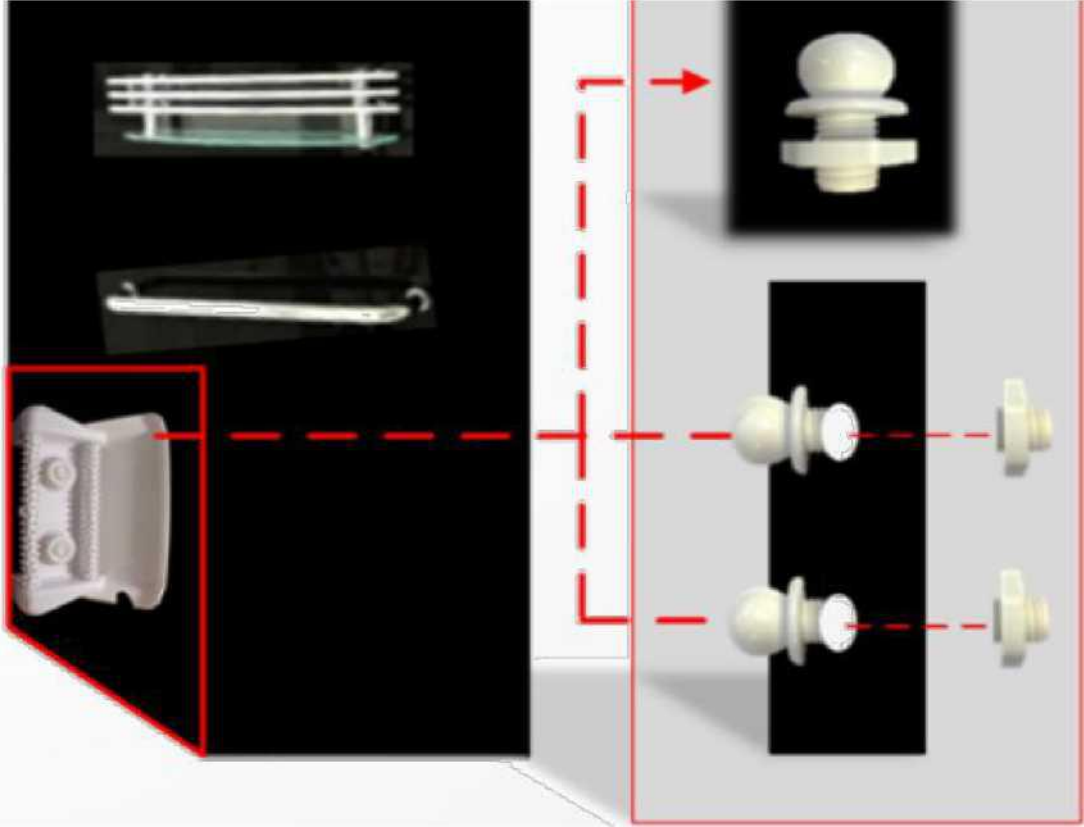


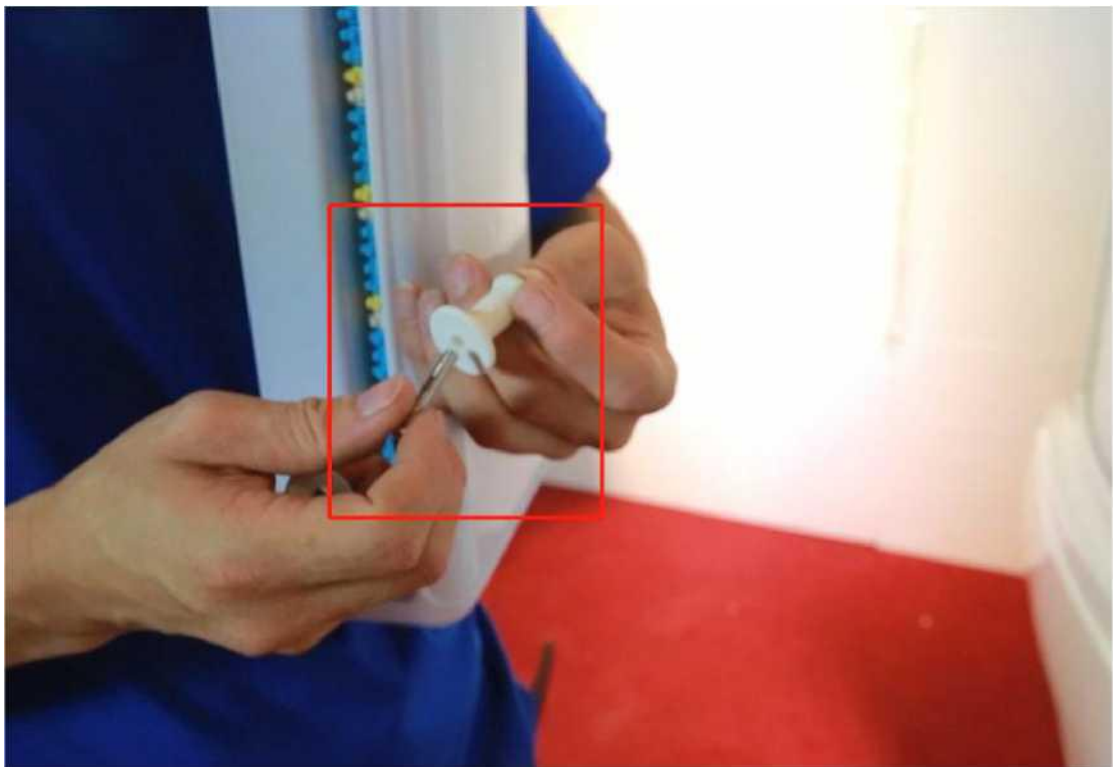
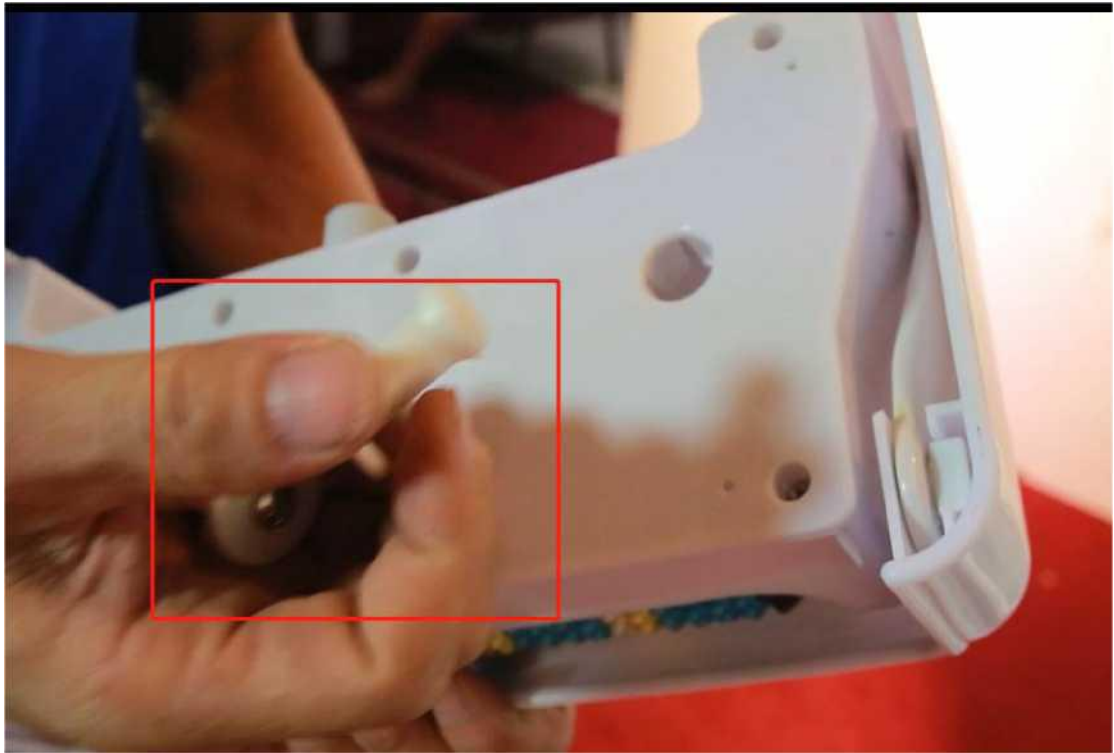


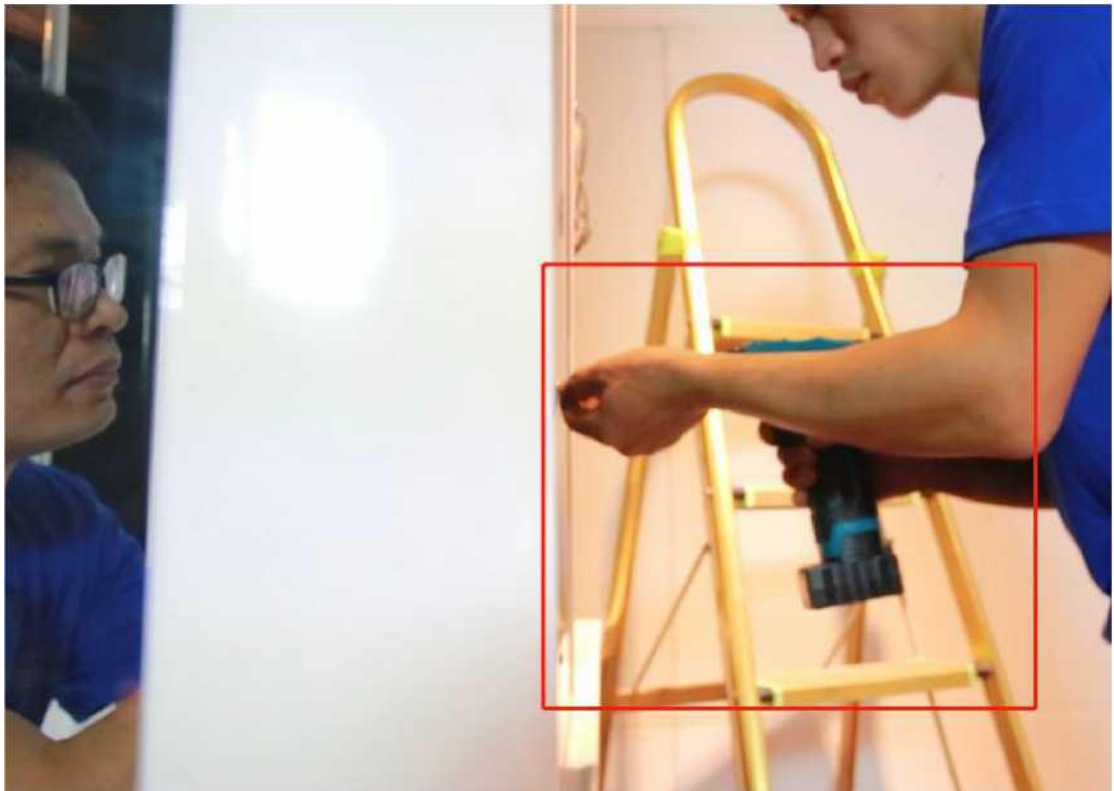
Step 15# Installation of flower sprinkler bracket



Step 16 # Install foot massage





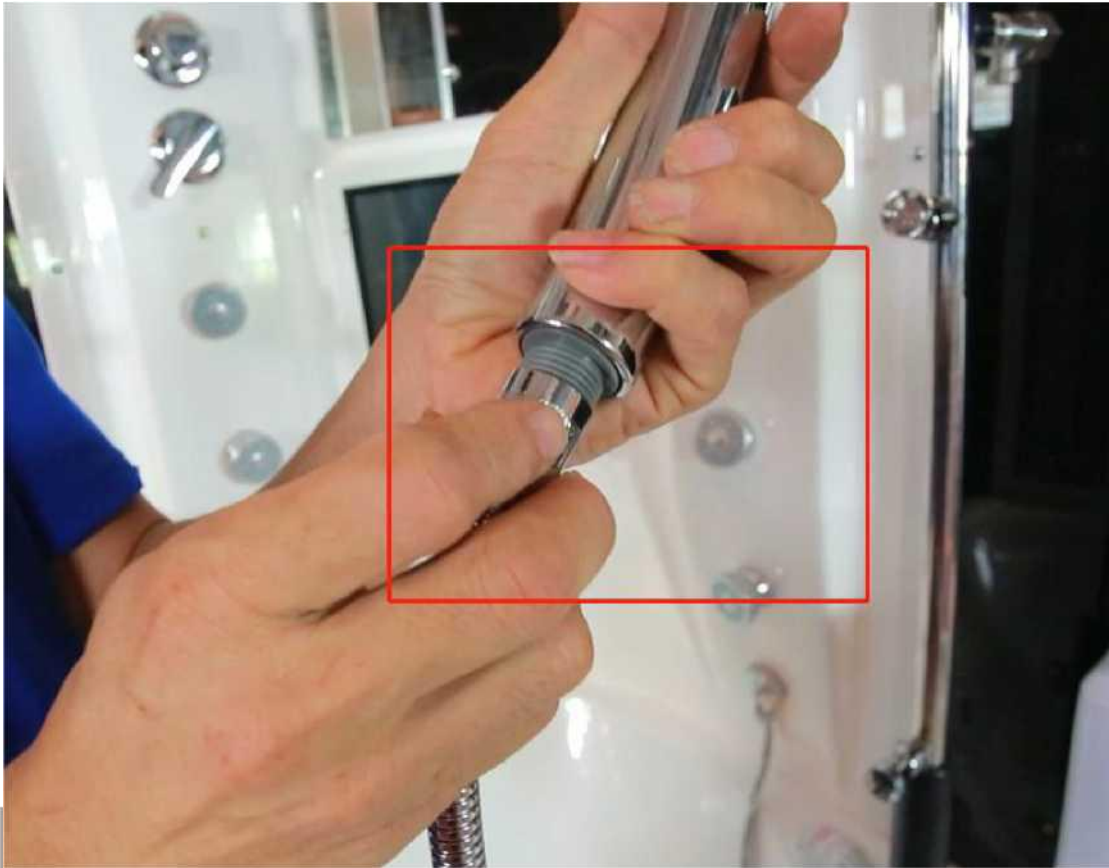








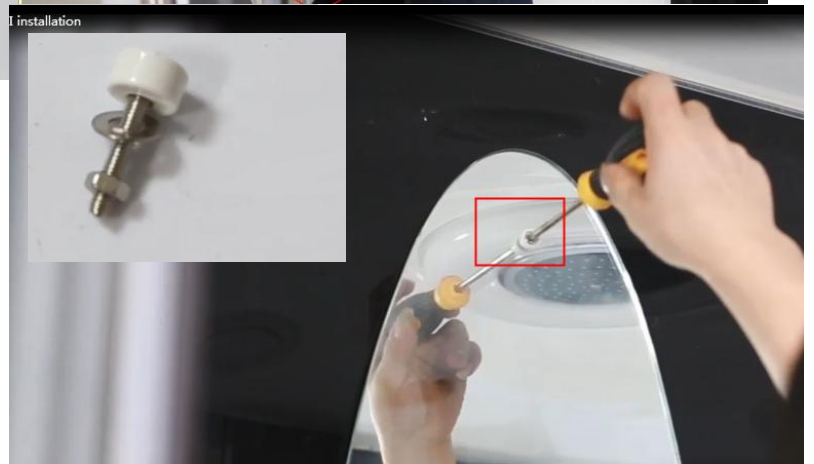
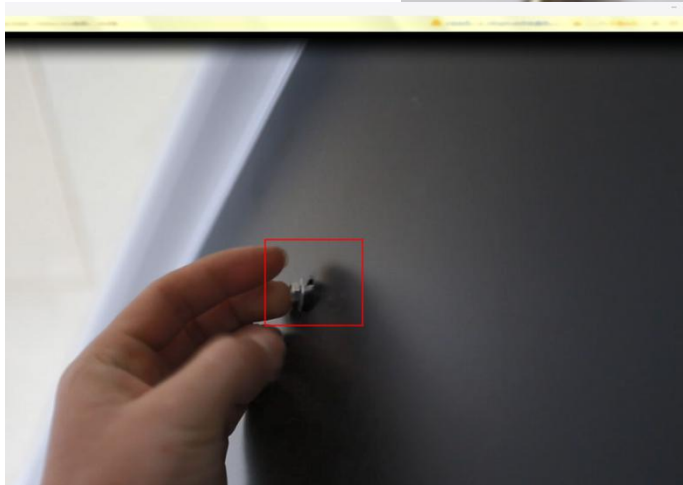
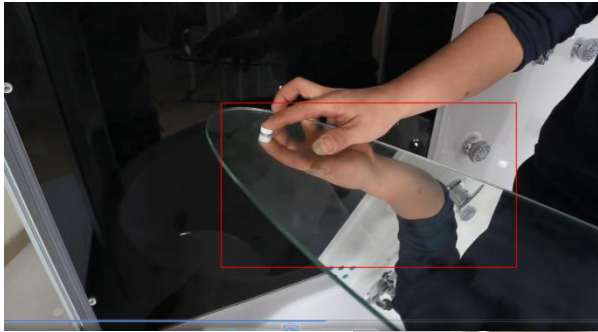
Step 17 # Installation hand sprinkler



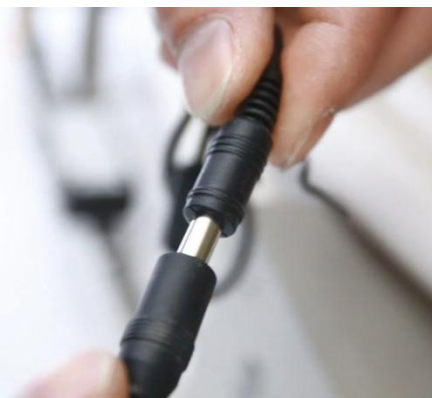
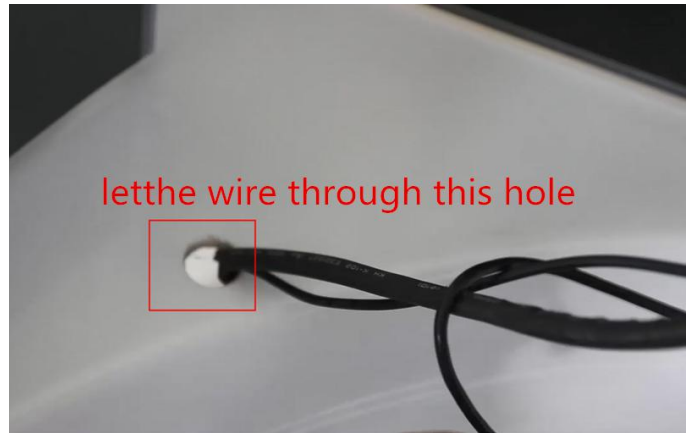




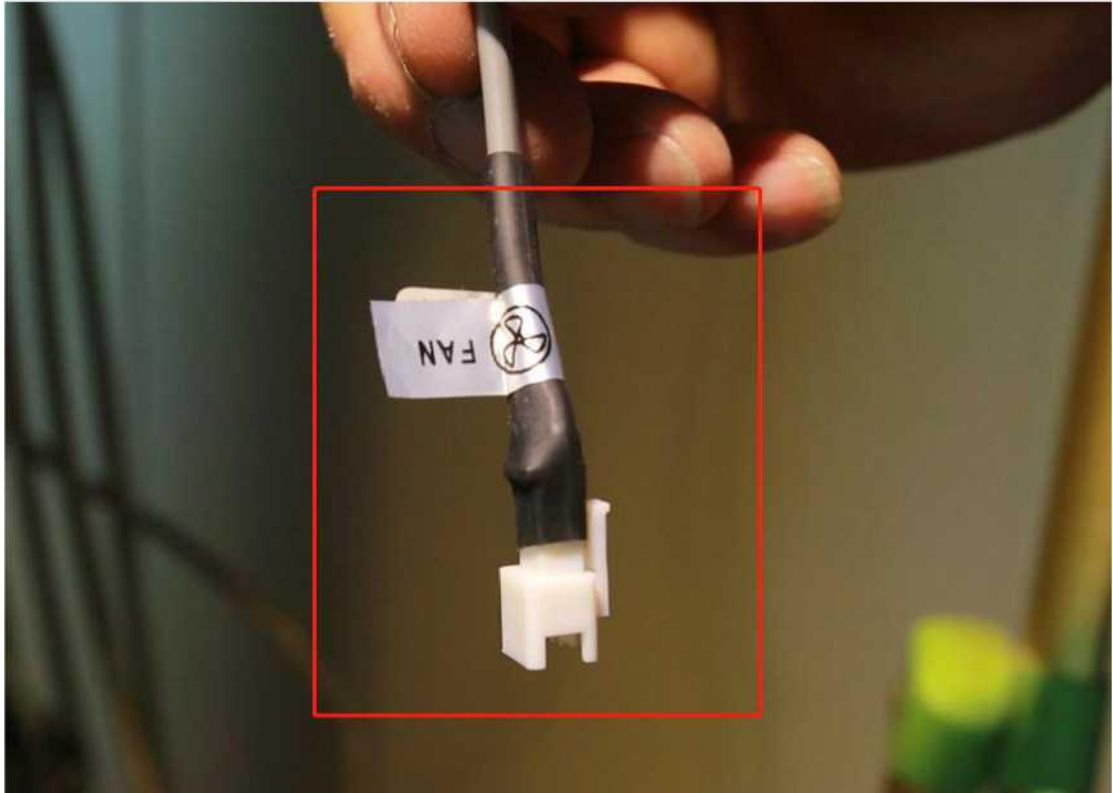
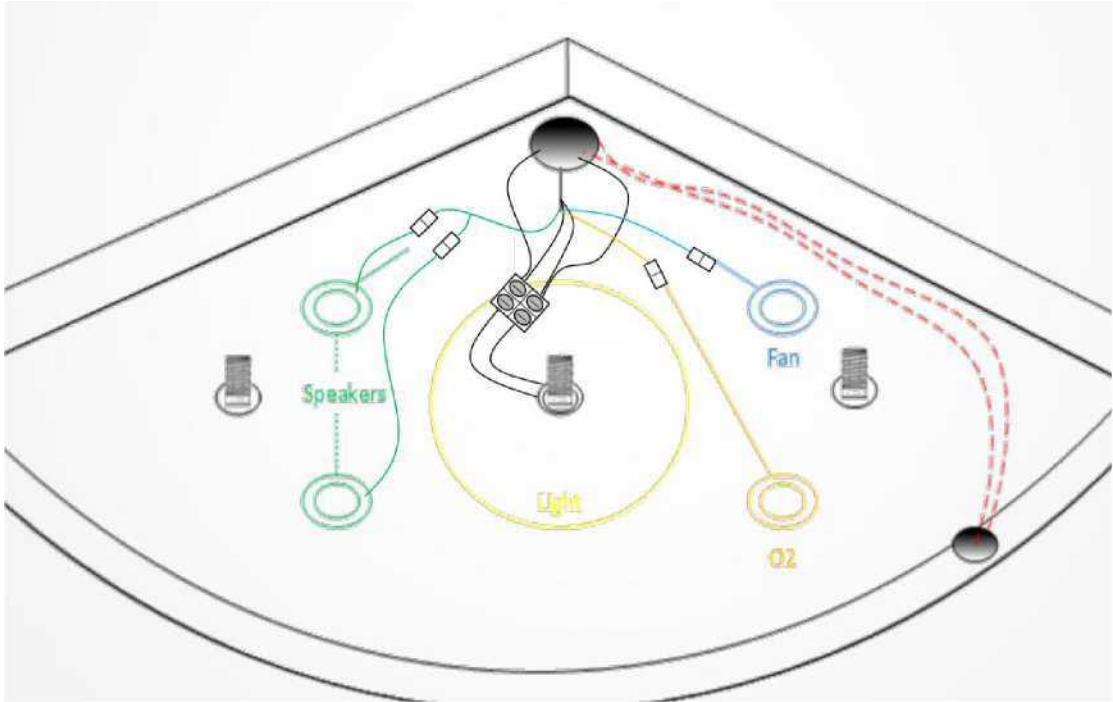
Step 18# Mirror installtion

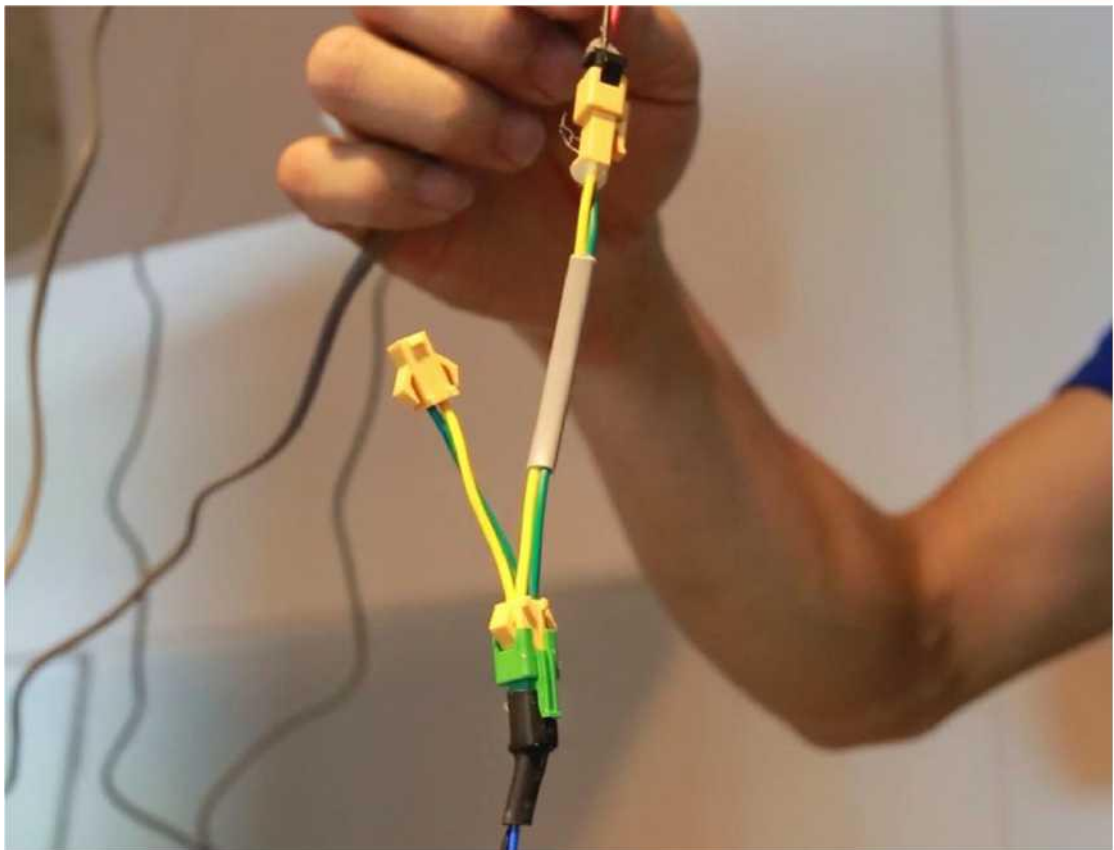
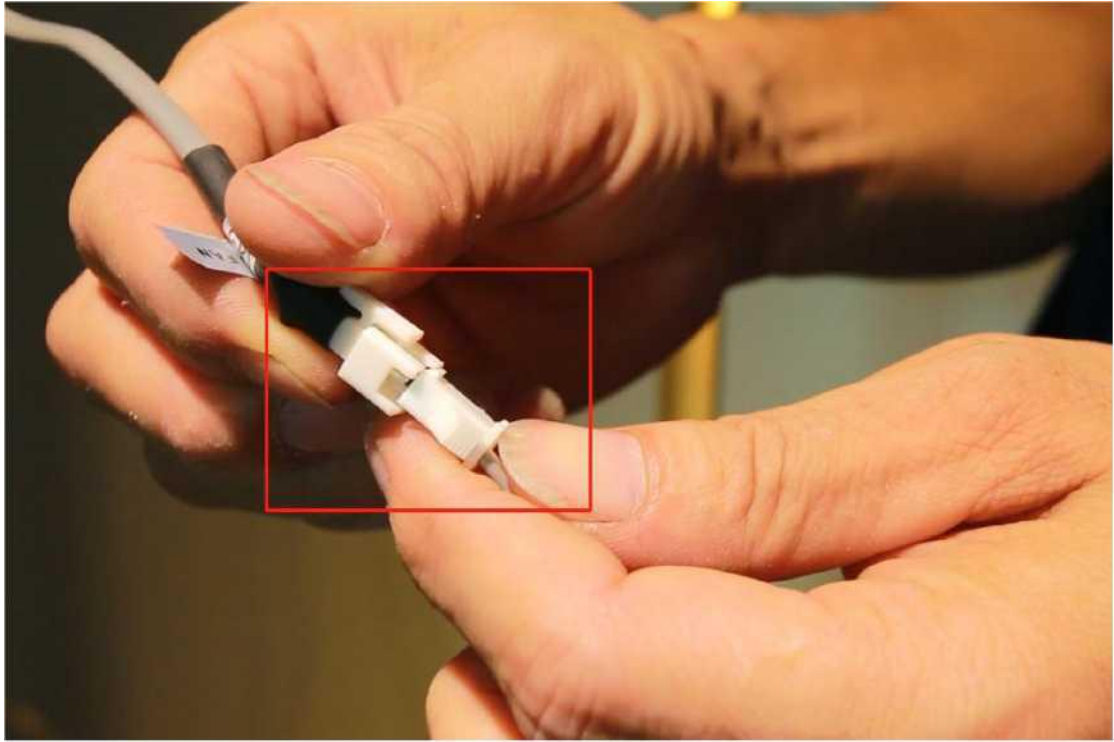


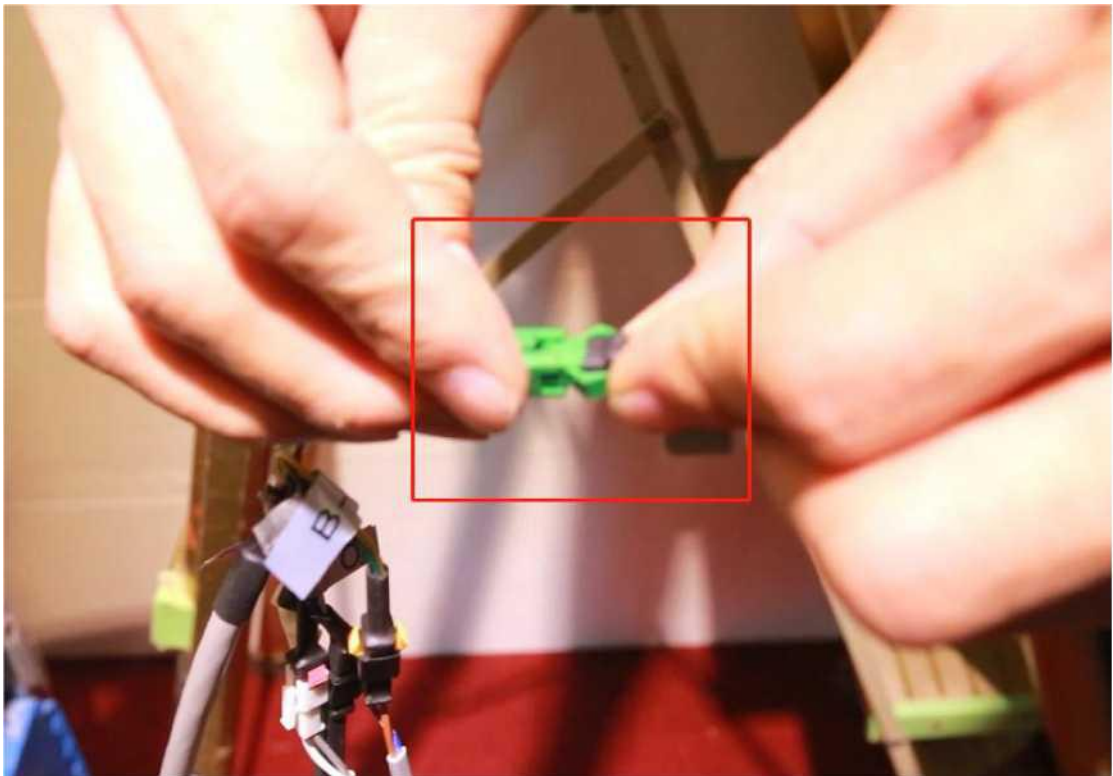
Step 19# TV Installation

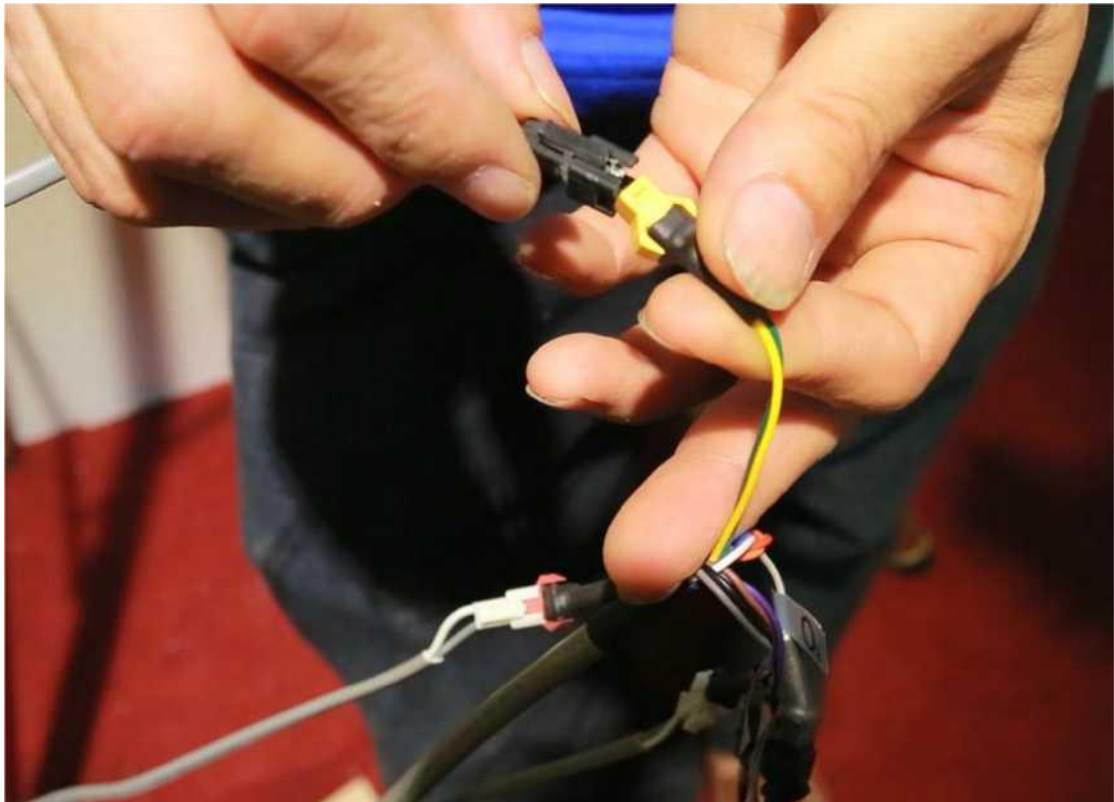


Wire connection





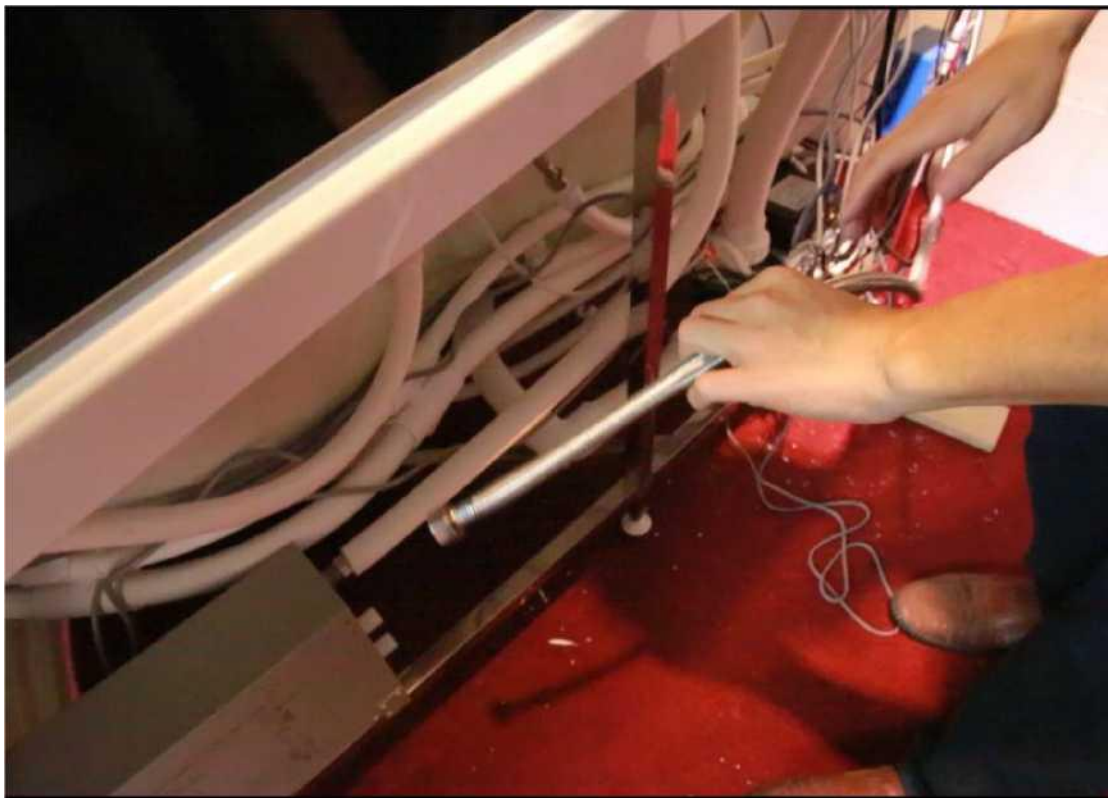
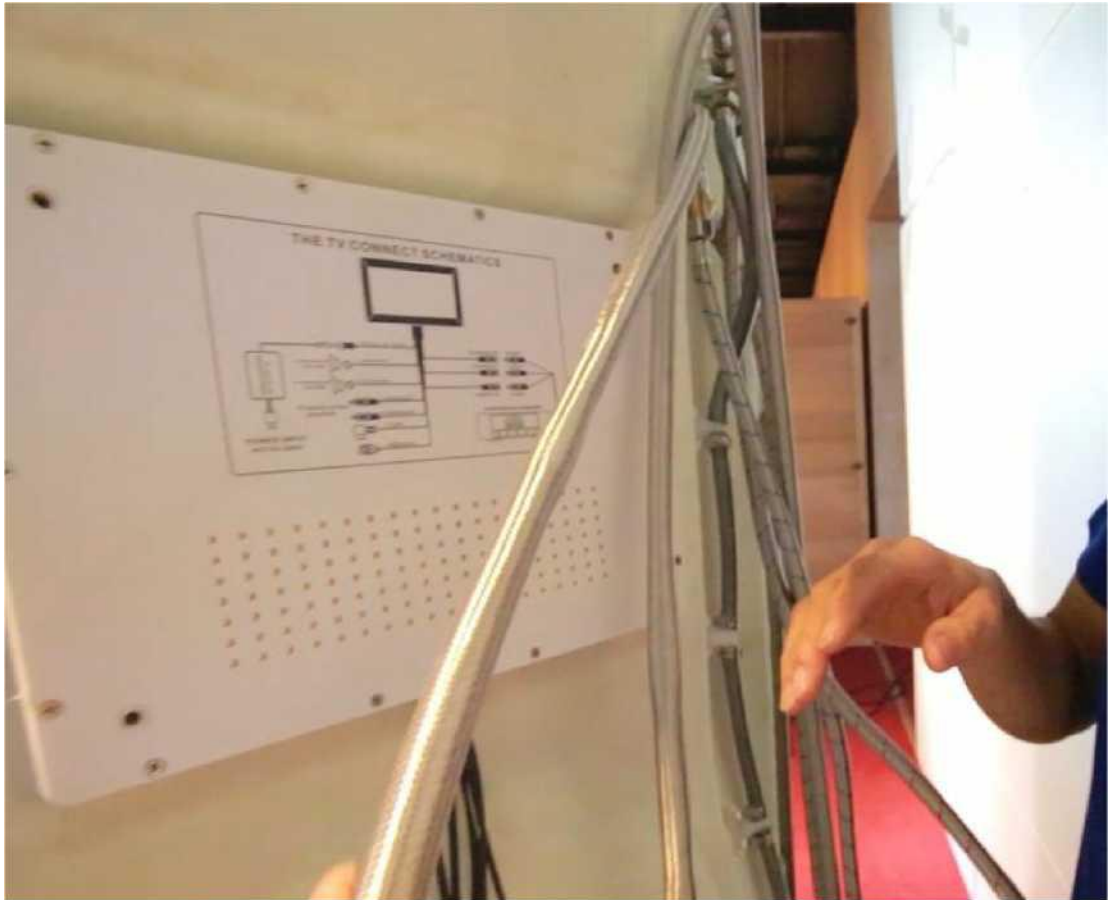


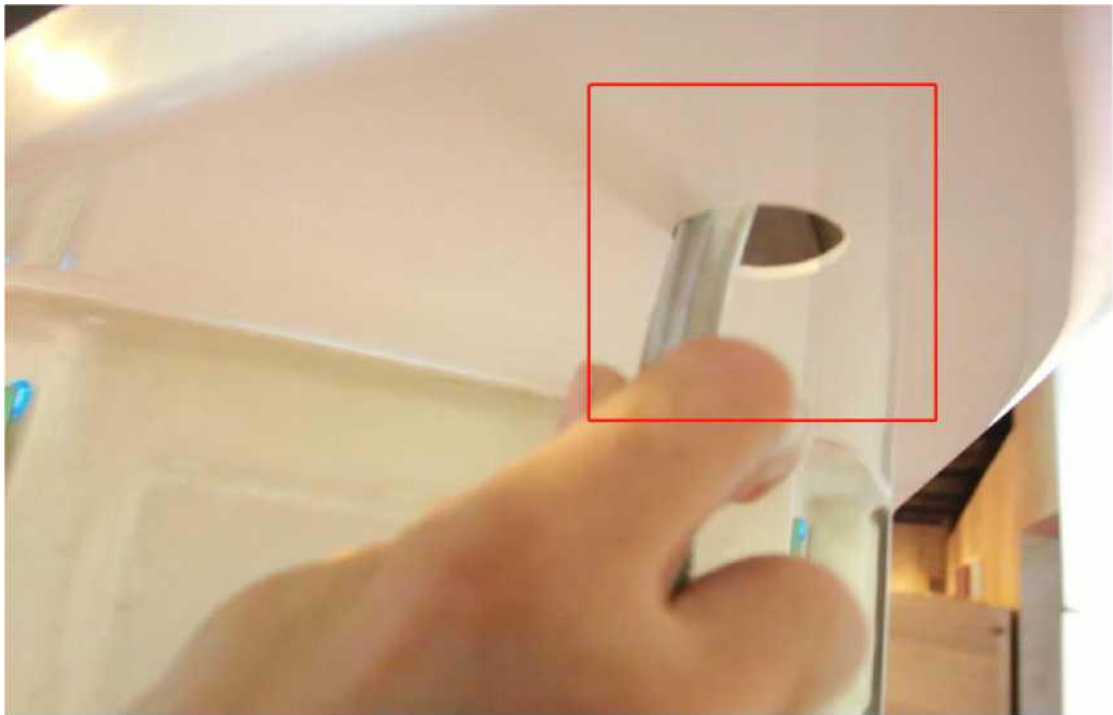
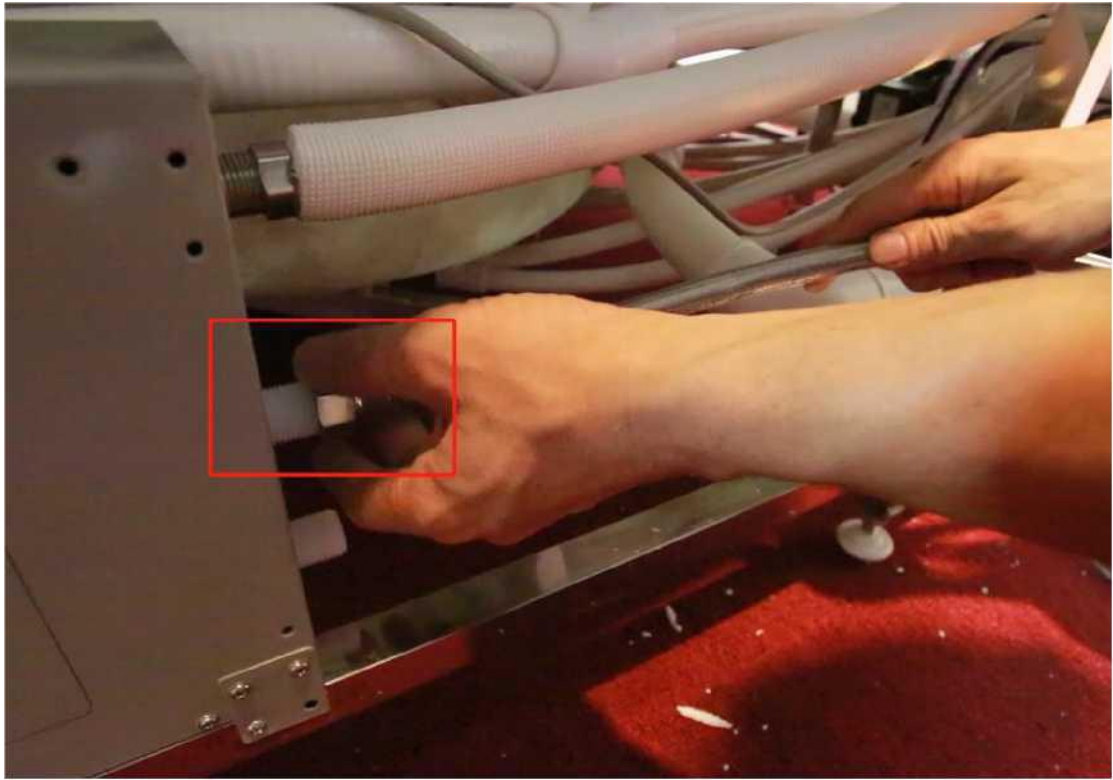


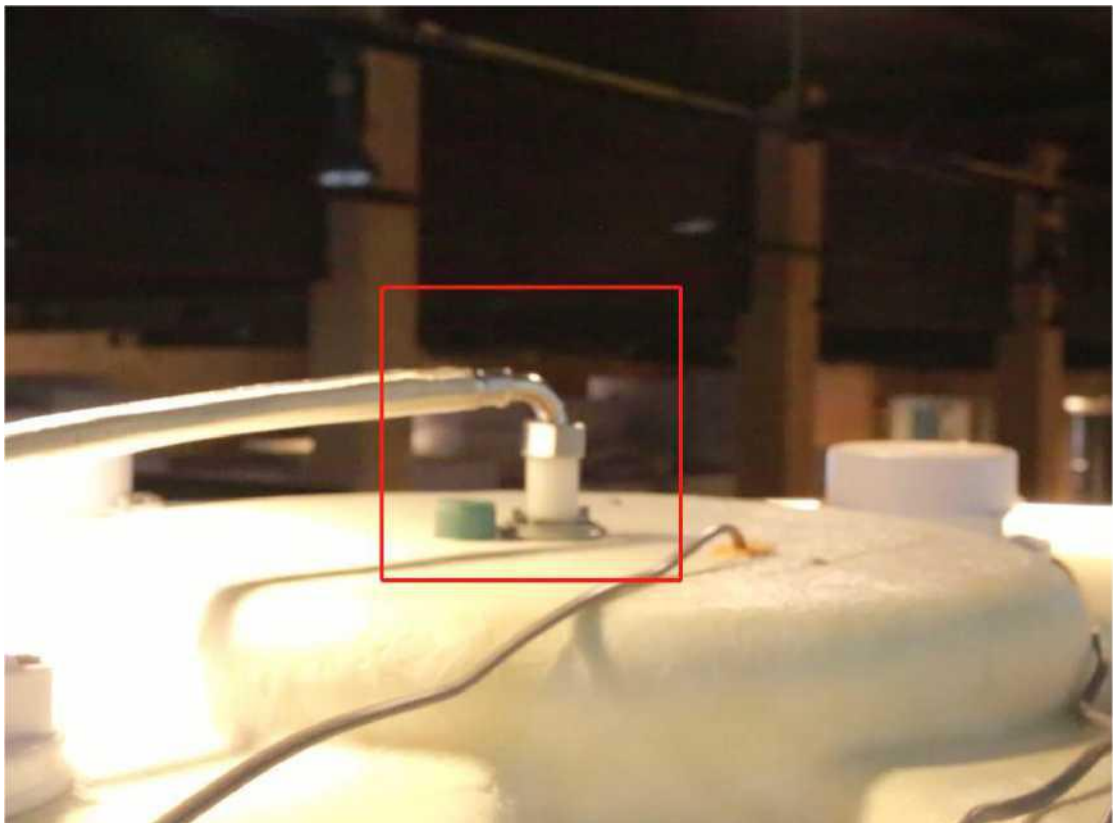
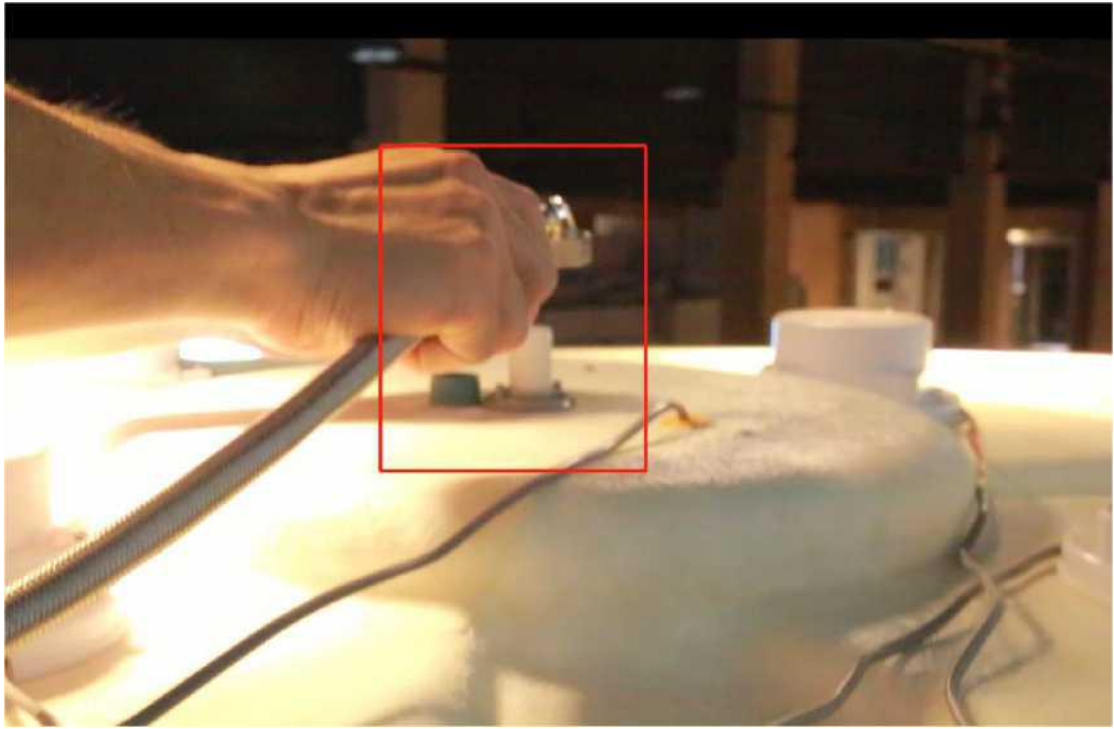




Hose connection



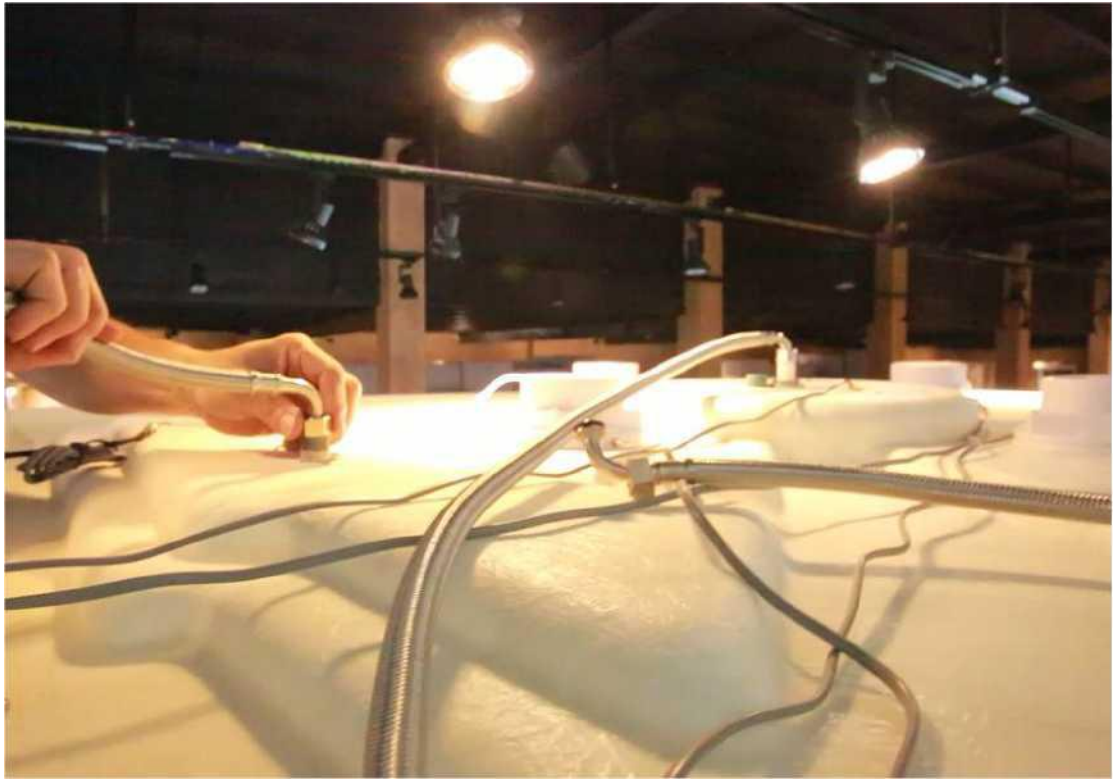




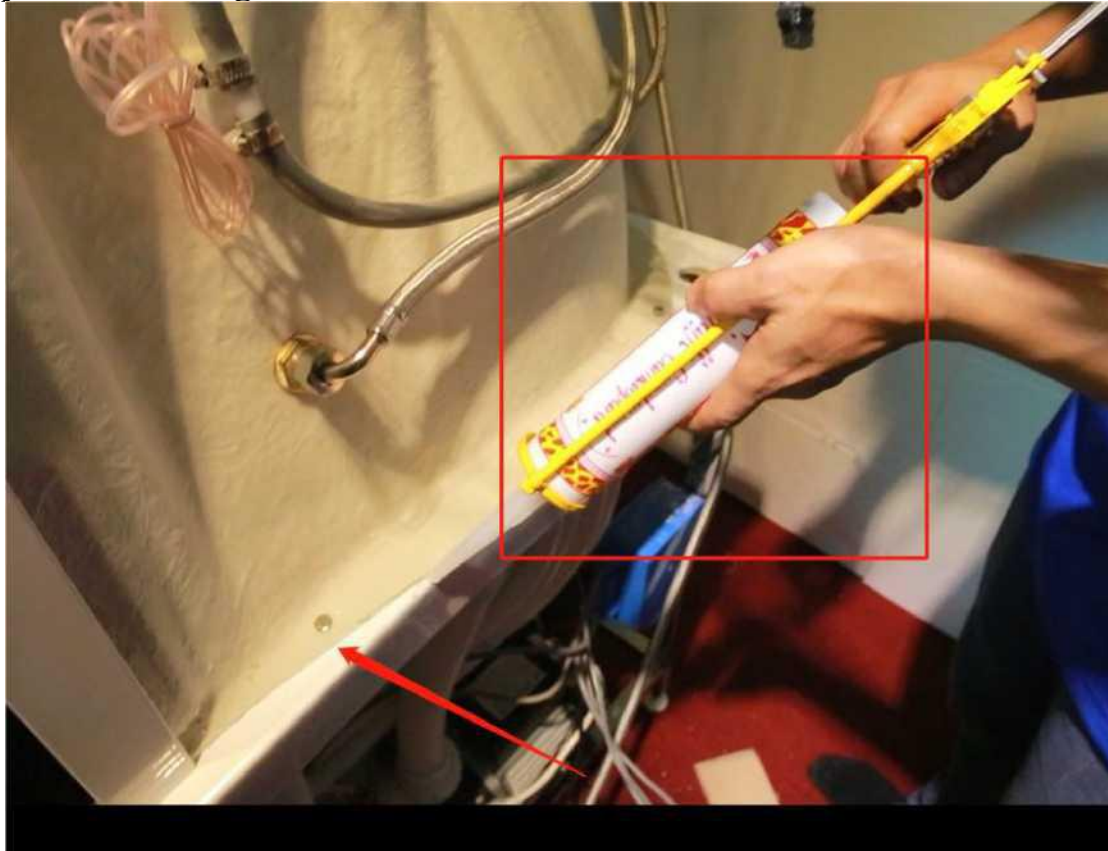








Add glass glue to the back of the back and the bathtub to prevent leakage



Guangzhou Alanbro Sanitary Ware Factory



Write at the end:

After the installation is complete, connect the hot and cold water pipe to the hot and cold water switch in your home and turn on the power supply. It will be able to be used normally.

Thank you for using Alanbro Sanitary Ware Products.

I wish you a pleasant bath time.

If you need any help, please leave a message by email. I will reply to you as soon as possible. Thank you.