



# URNEX® TRAINING



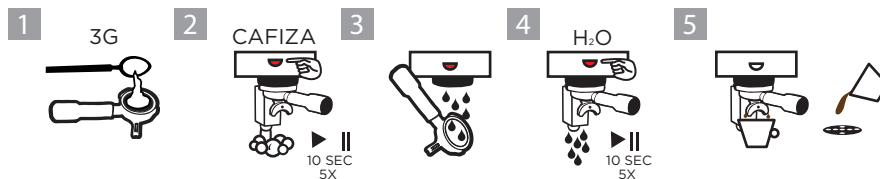
## CAFIZA® ESPRESSO MACHINE CLEANING POWDER



### INSTRUCTIONS FOR DAILY USE:

#### BACKFLUSH (EACH GROUP HEAD)

1. INSERT BLIND FILTER IN PORTA-FILTER AND ADD 3G CAFIZA® POWDER. INSERT PORTA-FILTER INTO GROUP HEAD.
2. ACTIVATE BREW CYCLE FOR 10 SECONDS. STOP 10 SECONDS. REPEAT 5 TIMES.
3. REMOVE PORTA-FILTER. ACTIVATE BREW CYCLE AND RINSE PORTA-FILTER IN STREAM OF WATER FROM GROUP HEAD. STOP CYCLE.
4. INSERT PORTA-FILTER INTO GROUP HEAD. REPEAT STEP (2) WITHOUT CAFIZA® POWDER 5 TIMES.
5. MAKE AND DISCARD A CUP OF ESPRESSO TO ENSURE NO RESIDUE REMAINS.



### INSTRUCTIONS FOR DAILY USE:

#### SOAK PORTAFILTERS, SCREENS AND DIP TRAYS

1. USE ONE (1) TEASPOON (6G) OF CAFIZA® POWDER IN A LARGE CONTAINER OR TRAY CONTAINING 1L OF HOT WATER (SELECT A VESSEL LARGE ENOUGH TO SUBMERGE THE DIRTY METAL PARTS - NOT PLASTIC HANDLE).
2. ALLOW PARTS TO SOAK IN SOLUTION FOR UP TO 30 MINUTES.
3. EMPTY VESSEL AND RINSE ALL PARTS WITH CLEAN WATER.



**URNEX BRANDS, INC**

SPECIALIZED EQUIPMENT CLEANERS SINCE 1936

700 EXECUTIVE BLVD ELMSFORD, NY 10523 • TEL 914.963.2042 • FAX 914.963.2145

[www.urnex.com](http://www.urnex.com)