	CLASSIFICATION <b>Installation Manual</b>	SKU <b>ENB-X5-QFU</b>	DOCUMENT NO. <b>X5-K-7</b>
	UNAVI X5 for Kia Optima UVO Installation Guide		VERSION <b>1.2</b>


# UNAVI X5 for Kia Optima Installation Guide

[UVO Infotainment System Use Only]



**MODEL: Kia Optima 2014-2015**  
**(Professional Use)**



	CLASSIFICATION <b>Installation Manual</b>	SKU <b>ENB-X5-QFU</b>	DOCUMENT NO. <b>X5-K-7</b>	
	<b>UNAVI X5 for Kia Optima UVO Installation Guide</b>		VERSION <b>1.2</b>	PAGE <b>2</b>

## **DISCLAIMER:**

This 'Do-It-Yourself Installation Guide' is intended for informational and reference purposes only. We do not recommend implicitly or explicitly, to anyone, performing any of the procedures described in this guide. We are also not responsible for any property damage, personal injury and/or death, or any other loss or damage that may result from following this informational guide.

Proceed with caution and care when performing modifications to your vehicle.

Be advised that making modification to your vehicle may void your manufacturer's warranty.

*Hyundai is a registered trademark of Hyundai Motor America.  
Kia is a registered trademark of Kia Motors America, Inc.*

*iPod is a registered trademark of Apple, Inc.  
Bluetooth is registered trademark of Bluetooth SIG, Inc.*

## **NOTE**

- Take care not to scratch the center fascia panel, dash trim, shift knob, etc.
- Eject disc before removing the audio unit to prevent damaging the CD player's load mechanism.
- Disconnecting the negative (-) battery terminal is recommended prior to installation.
- Do not touch the circuit board and the terminal connector of the flat cable with your bare hands.
- Make sure all connectors and cables are plugged in properly.
- All ground wires provided must be connected to chassis ground.

## **MAIN COMPONENTS**

(Not actual size, Items shown may vary)




Rear View

Optima fascia kit:

- Fascia
- Control keypad w/cable
- Main LCD Panel w/Mounting Bracket

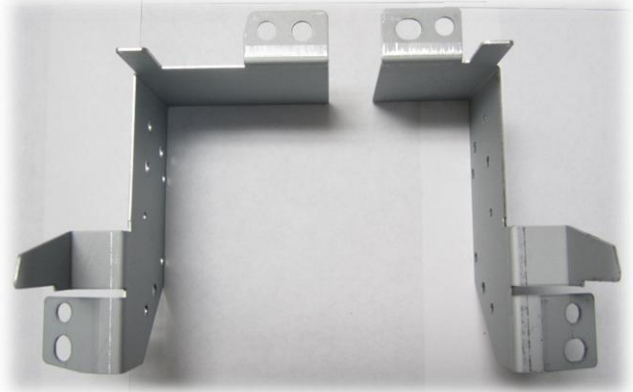


	CLASSIFICATION <b>Installation Manual</b>	SKU <b>ENB-X5-QFU</b>	DOCUMENT NO. <b>X5-K-7</b>	
	UNAVI X5 for Kia Optima UVO Installation Guide		VERSION <b>1.2</b>	PAGE <b>3</b>

*(Continued)*



Front replacement brackets



Mounting brackets (Left & Right)



Control box + SD Card



Trip interface board



External speaker




Control box interface cable



GPS antenna



SMART cable

	CLASSIFICATION <b>Installation Manual</b>	SKU <b>ENB-X5-QFU</b>	DOCUMENT NO. <b>X5-K-7</b>	
	<b>UNAVI X5 for Kia Optima UVO Installation Guide</b>		VERSION <b>1.2</b>	PAGE <b>4</b>


## TOOLS REQUIRED:

- Masking Tape
- Double-sided Tape \*
- Electrical Tape
- Velcro
- Dash Trim Removal Tool \*
- Zip/Cable Ties
- Scissor \*
- Plastic/Tin Snips \*
- Pliers \*
- Screwdriver (Phillips-head, Magnetized) \*
- Magnetic Screw & Bolt Tray
- Power Drill \*
- Unibit \*
- Electrical Connectors & Tools - (Wire stripper, Crimper, T-Tap, etc.)
- Hand Saw/Reciprocating Saw \*
- Heat Gun

*\*Required Tools*

### Pre-installation picture of non-navigation equipped models (Trim levels may vary)



	CLASSIFICATION <b>Installation Manual</b>	SKU <b>ENB-X5-QFU</b>	DOCUMENT NO. <b>X5-K-7</b>	
	UNAVI X5 for Kia Optima UVO Installation Guide		VERSION <b>1.2</b>	PAGE <b>5</b>

## **TPMS (TIRE PRESSURE MONITORING SYSTEM) WARNING LAMP – ELECTROMAGNETIC INTERFERENCE**

### **SYMPTOM/CONDITION**

The TPMS malfunction indicator lamp may be illuminated if the vehicle is moving around electric power supply cables or radio transmitters at police stations, government and public offices, broadcasting stations, military installations, airports, transmitting towers, etc. External electronic devices connected to the vehicle's power outlets (notebook computer, seat warmer, massager, coolers, GPS navigation, mobile phone charger, etc.) may also cause this condition. The TPMS malfunction indicator lamp generally turns off after the vehicle is removed from such interferences.

### **DIAGNOSIS:**

If the TPMS indicator lamp is ON, and all four wheel sensors are checked and are working correctly, external electronic devices connected to the vehicle's power outlets (notebook computer, seat warmer, massager, coolers, etc.) may be the cause of this condition. Car manufacturers are aware that any aftermarket device operating especially on the CAN-Bus system can trigger random warning lamps.

### **ACTION:**

1. Please inspect if there are any other electronic devices inside the vehicle that may cause electromagnetic interferences with the TPMS.
2. Drive the vehicle out of the strong electric field for about 5 minutes to verify that the condition is corrected.
3. Relocate the Control Box and its related cables away from the TPMS sensor (typically located behind the glove compartment).
4. If the above doesn't work, use a metallic shield wrap or a similar material to wrap around the Control Box and its cables with both ends of the shield connected to chassis ground at the point of entry.

## **GPS ANTENNA INSTALLATION**

The delay when the GPS receiver is first switched on is due to the latest ephemeris data being downloaded, which is essential for the GPS receiver. The data is valid for around 4 hours and takes approximately 20 seconds with a clear line of site to a satellite. It takes longer if using multiple satellites, for instance if the GPS receiver is moving during first acquisition.


The antenna needs to be facing the sky through a non-metallic enclosure. A metallic enclosure (including window tints) will prevent the RF signal being received by the antenna and cause a Faraday cage effect. Likewise, positioning the antenna near to obstructions such as laptop screen or where hands will be over the antenna should also be avoided, as the shielded will have a negative performance.

The GPS Antenna base is magnetic. On metal vehicles, position the antenna in the center of the vehicle at the highest point.

For vehicles with non-metallic mounting surfaces, a metal plate with adhesive strips has been included in the kit for easy mounting and installation. It is **STRONGLY** recommended to use this metal plate underneath the antenna as it will improve signal acquisition.

Once the antenna has been positioned, route the antenna cable carefully to avoid damage.

Position the GPS antenna in the center of the vehicle at the highest point with a clear view of the sky.

	CLASSIFICATION <b>Installation Manual</b>	SKU <b>ENB-X5-QFU</b>	DOCUMENT NO. <b>X5-K-7</b>	
	UNAVI X5 for Kia Optima UVO Installation Guide		VERSION <b>1.2</b>	PAGE <b>6</b>

**> INSTALLATION STARTS HERE <**




Gently remove the side panel cover on the driver side.

*(Apply protective tapes and take care not to damage and scratch the interior dash and its related parts)*



Remove the screws (2EA) once the panel cover is removed.

	CLASSIFICATION <b>Installation Manual</b>	SKU <b>ENB-X5-QFU</b>	DOCUMENT NO. <b>X5-K-7</b>	
	UNAVI X5 for Kia Optima UVO Installation Guide		VERSION <b>1.2</b>	PAGE <b>7</b>




Remove the screws (2EA) located on the bottom of the driver side panel assembly.

*(Images shown on this page may vary)*



Gently pull off the panel assembly as shown.  
(See next picture)

	CLASSIFICATION <b>Installation Manual</b>	SKU <b>ENB-X5-QFU</b>	DOCUMENT NO. <b>X5-K-7</b>	
	<b>UNAVI X5 for Kia Optima UVO Installation Guide</b>		VERSION <b>1.2</b>	PAGE <b>8</b>




Carefully disconnect all connectors from the back of the panel.  
(Picture shown may vary based on vehicle trim levels)



Image of driver side panel assembly removed. (Installation is the reverse of removal)




	CLASSIFICATION <b>Installation Manual</b>	SKU <b>ENB-X5-QFU</b>	DOCUMENT NO. <b>X5-K-7</b>	
	<b>UNAVI X5 for Kia Optima UVO Installation Guide</b>		VERSION <b>1.2</b>	PAGE <b>9</b>



Gently pull out the center fascia garnish as shown.



Image of center garnish removed.


	CLASSIFICATION <b>Installation Manual</b>	SKU <b>ENB-X5-QFU</b>	DOCUMENT NO. <b>X5-K-7</b>	
	<b>UNAVI X5 for Kia Optima UVO Installation Guide</b>		VERSION <b>1.2</b>	PAGE <b>10</b>



Remove screws to pull out the climate control assembly.  
Disconnect all connectors from the back.

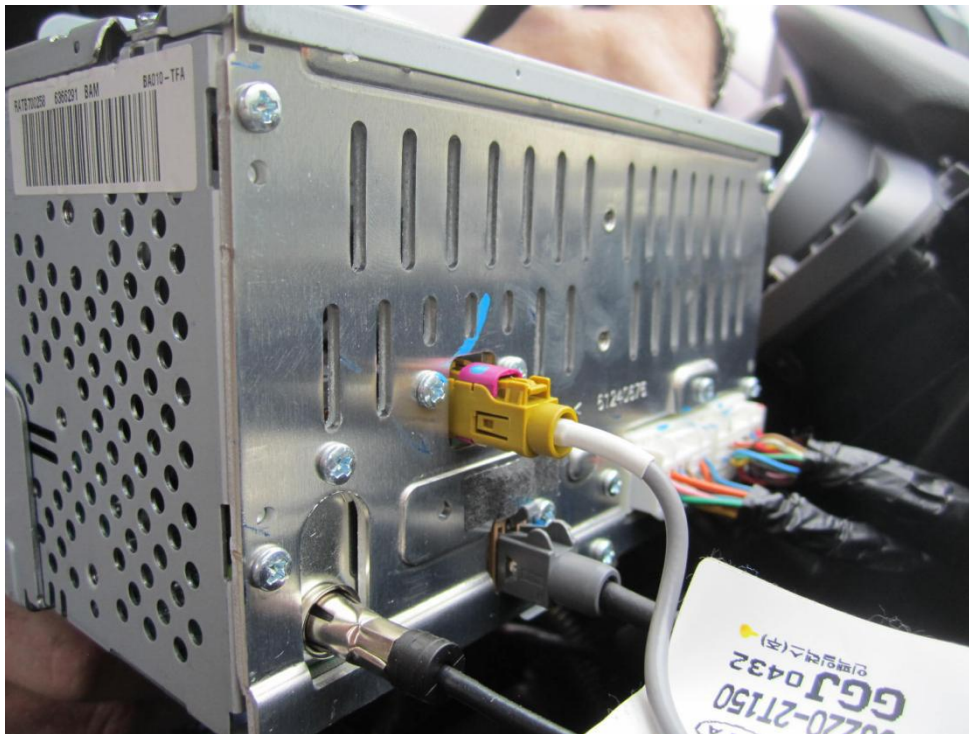


Loosen instrument cluster panel to remove the center fascia panel after loosening screws.

	CLASSIFICATION <b>Installation Manual</b>	SKU <b>ENB-X5-QFU</b>	DOCUMENT NO. <b>X5-K-7</b>	
	UNAVI X5 for Kia Optima UVO Installation Guide		VERSION <b>1.2</b>	PAGE <b>11</b>



Remove the radio head unit after loosening the mounting screws (4ea).



As the head unit is being pulled out, carefully disconnect all cables behind it.



	CLASSIFICATION <b>Installation Manual</b>	SKU <b>ENB-X5-QFU</b>	DOCUMENT NO. <b>X5-K-7</b>	
	UNAVI X5 for Kia Optima UVO Installation Guide		VERSION <b>1.2</b>	PAGE <b>12</b>

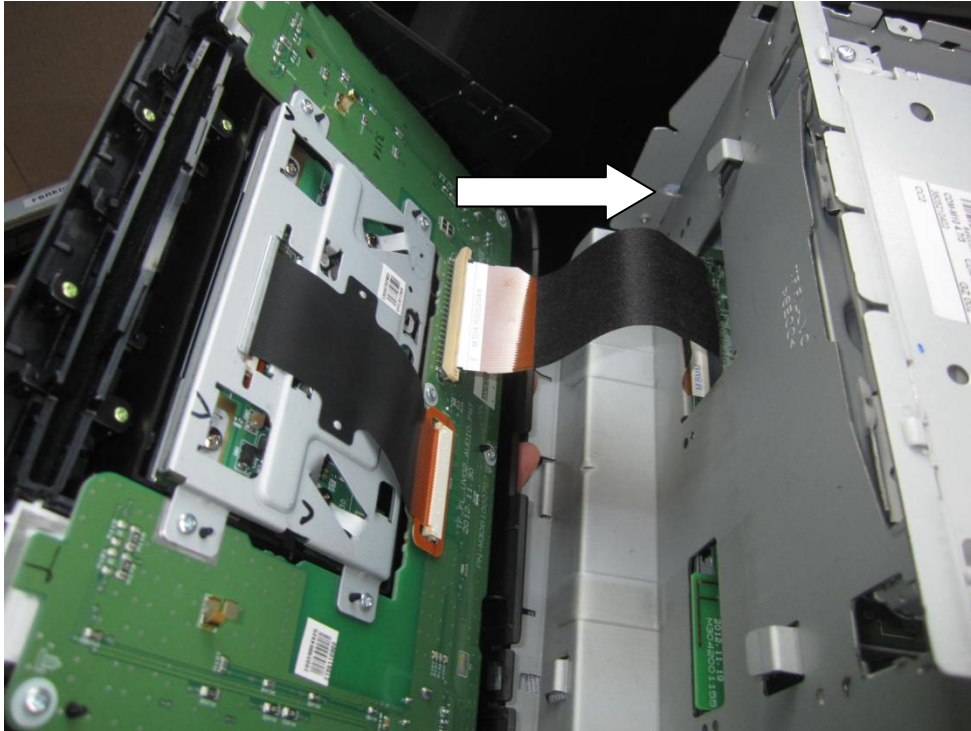


Image of the center dash panel after removing the head unit.

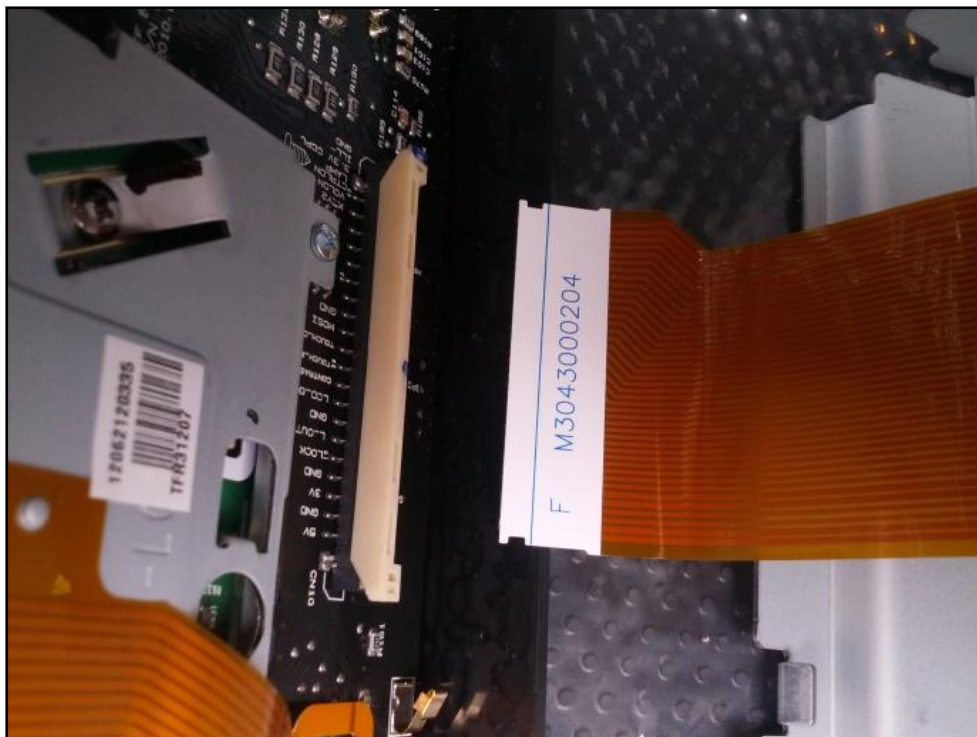


Remove the mounting brackets on each side.


	CLASSIFICATION <b>Installation Manual</b>	SKU <b>ENB-X5-QFU</b>	DOCUMENT NO. <b>X5-K-7</b>	
	<b>UNAVI X5 for Kia Optima UVO Installation Guide</b>		VERSION <b>1.2</b>	PAGE <b>13</b>



Carefully pull out the audio faceplate from the audio assembly.

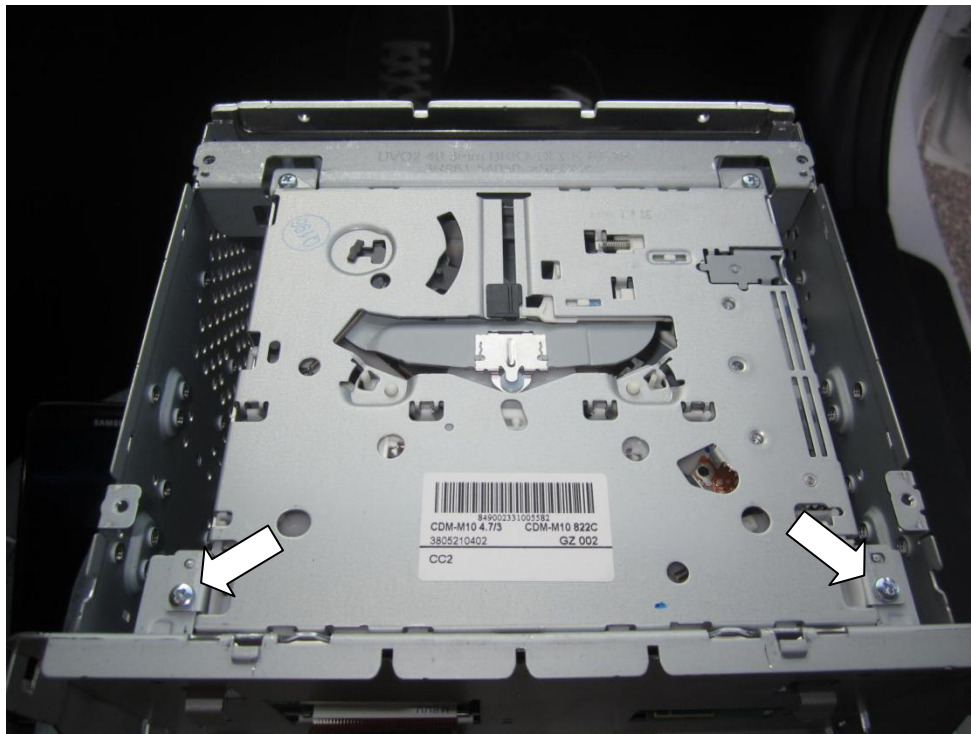


Disconnect the ribbon cable (FCC) from the back of the audio faceplate ONLY.  
**\*\*Use Caution\*\***


	<b>CLASSIFICATION</b> <b>Installation Manual</b>	<b>SKU</b> <b>ENB-X5-QFU</b>	<b>DOCUMENT NO.</b> <b>X5-K-7</b>
	<b>UNAVI X5 for Kia Optima UVO Installation Guide</b>		<b>VERSION</b> <b>1.2</b>

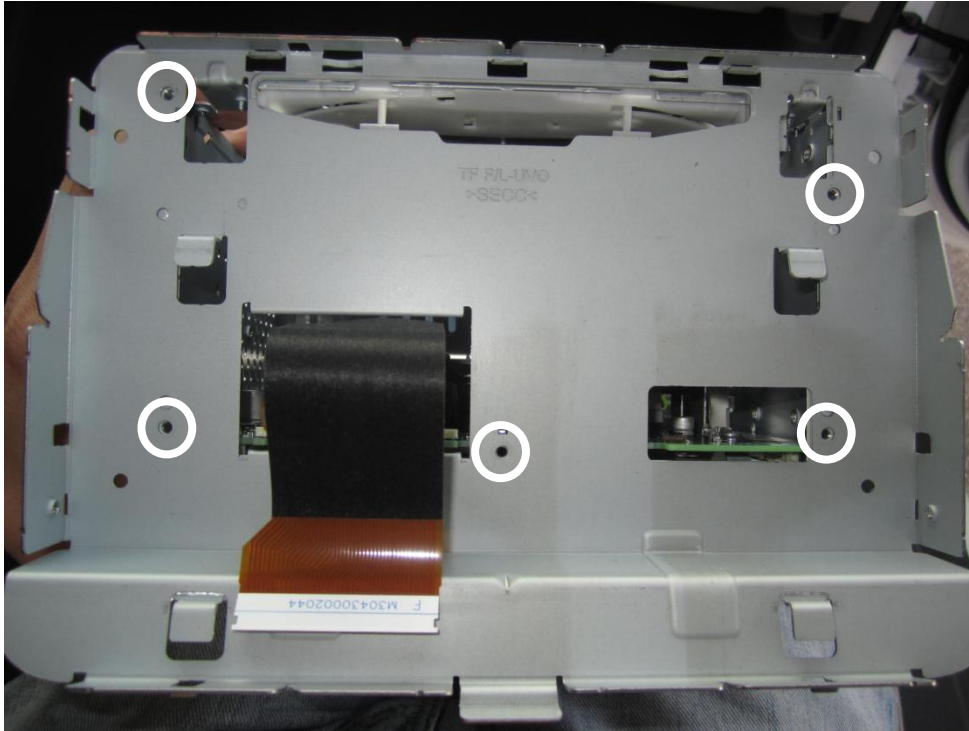


Remove the screws (4ea) on the head unit to remove the top cover.



Remove the top cover after loosening the screws.  
Remove the two screws as marked in white arrows shown above.

	CLASSIFICATION <b>Installation Manual</b>	SKU <b>ENB-X5-QFU</b>	DOCUMENT NO. <b>X5-K-7</b>	
	UNAVI X5 for Kia Optima UVO Installation Guide		VERSION <b>1.2</b>	PAGE <b>15</b>




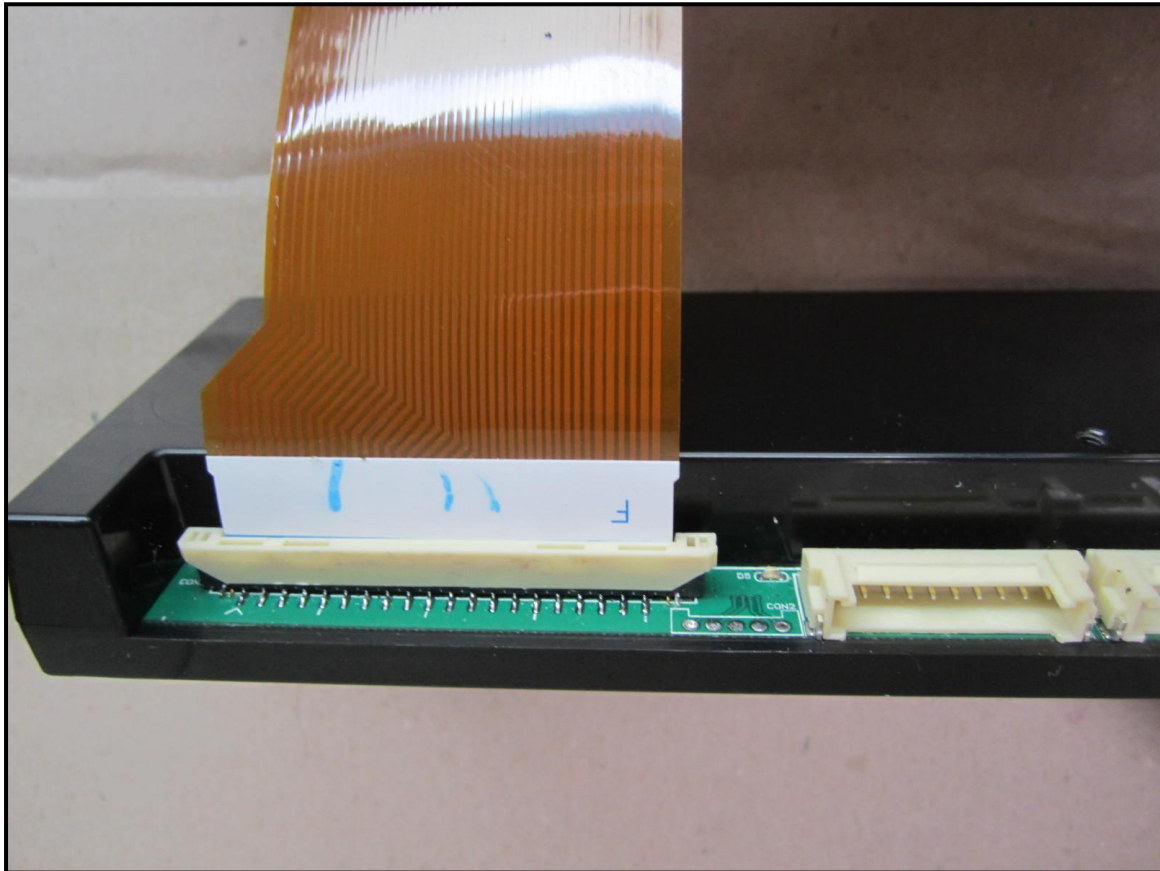
Remove the screws securing the front bracket as shown.



Please proceed with CAUTION when inserting the ribbon cable into the Trip Interface board.  
DO NOT twist the cable as this may result in a damaged board and/or the audio unit!


**[WARNING] This TRIP MODULE is designed for specific models. Improper use such as failure to follow instructions and use with incompatible radio will damage this module and the radio unit!**

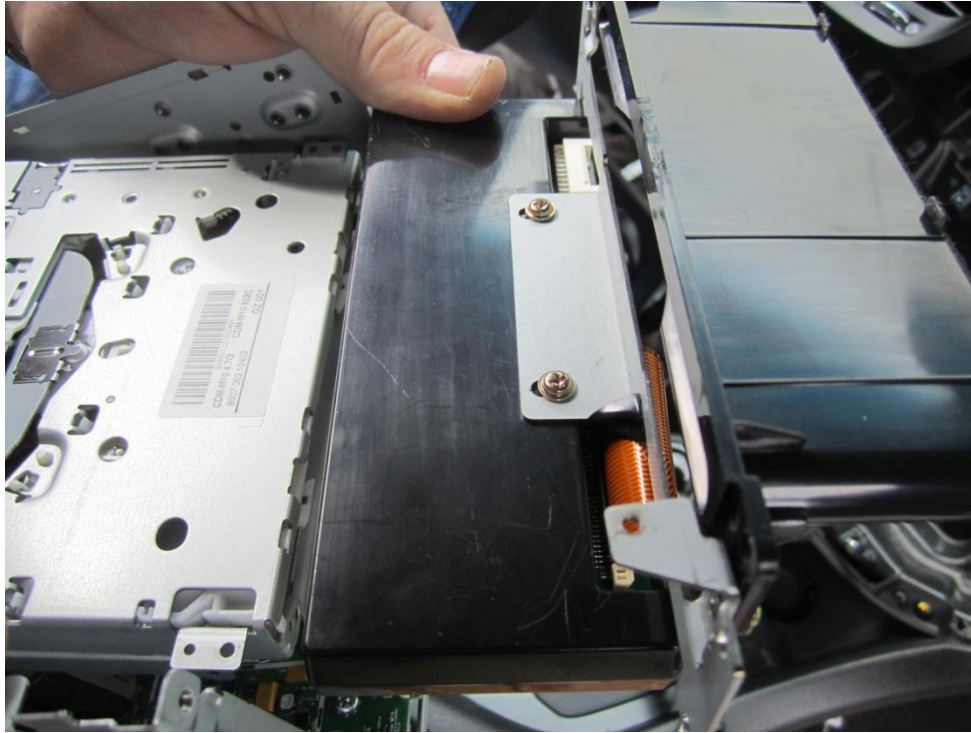
	CLASSIFICATION <b>Installation Manual</b>	SKU <b>ENB-X5-QFU</b>	DOCUMENT NO. <b>X5-K-7</b>	
	<b>UNAVI X5 for Kia Optima UVO Installation Guide</b>		VERSION <b>1.2</b>	PAGE <b>16</b>



- When attaching the ribbon cable on all UVO systems, for those familiar with Unavi installs, note that it is wider and uses a different type of connector than the standard radio units.
- Insert the cable into the connector and punch down on the connector on the edges and run your finger along the edge as to make sure it is seated evenly across the connector.
- On the ribbon cable you will notice a line that should be parallel with the connector if inserted properly.
- Also (if not included), make sure to use a piece of electrical tape or protective material in between the ribbon cable and the front plate to prevent the cable from being pinched or scarred from vibration.

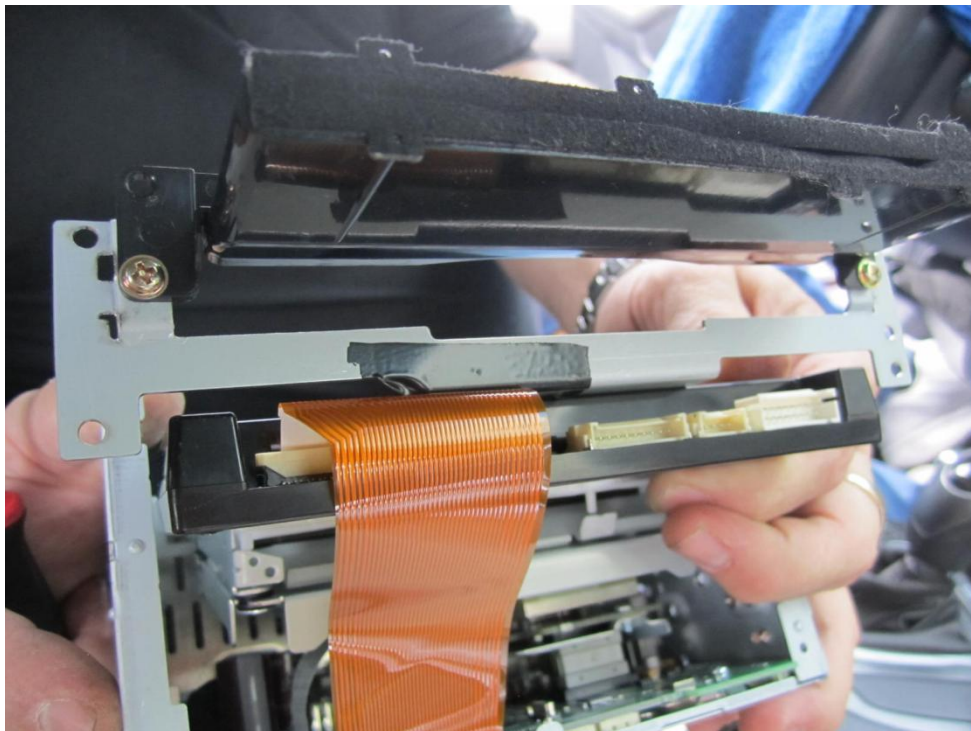


	CLASSIFICATION <b>Installation Manual</b>	SKU <b>ENB-X5-QFU</b>	DOCUMENT NO. <b>X5-K-7</b>
	UNAVI X5 for Kia Optima UVO Installation Guide		VERSION <b>1.2</b>




Assemble the Trip Interface board onto the front replacement bracket piece as shown.  
*(Use screws provided in the kit to mount the Trip Interface board).*

***(Images shown on this page may vary)***



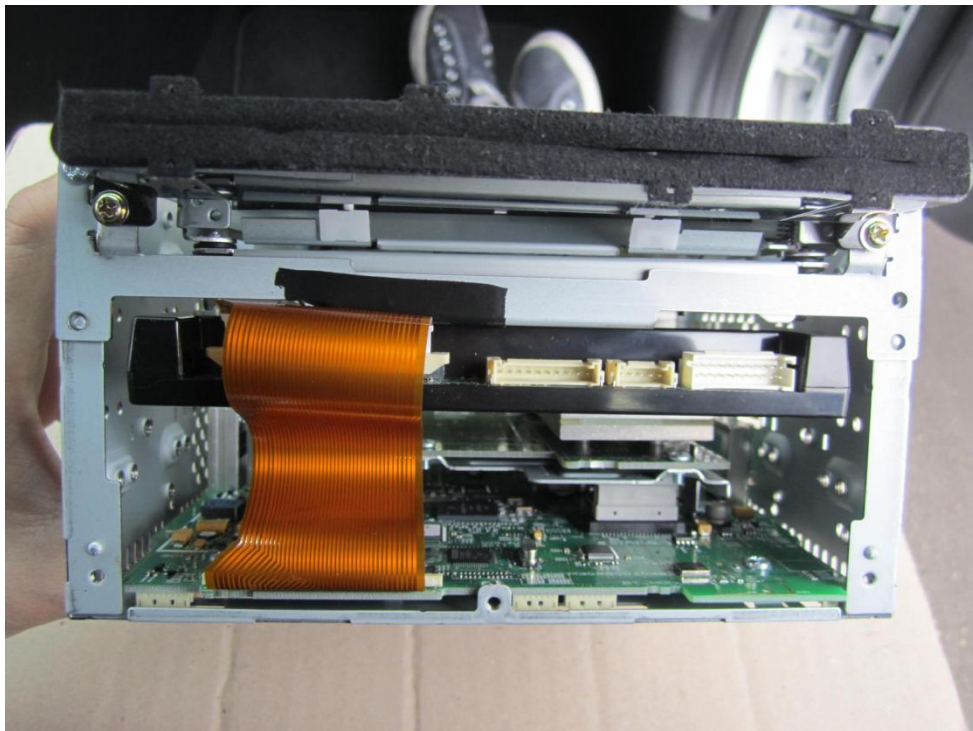
Front view of the Trip Interface board mounted on to the front replacement bracket.

	CLASSIFICATION <b>Installation Manual</b>	SKU <b>ENB-X5-QFU</b>	DOCUMENT NO. <b>X5-K-7</b>
	UNAVI X5 for Kia Optima UVO Installation Guide		VERSION <b>1.2</b>




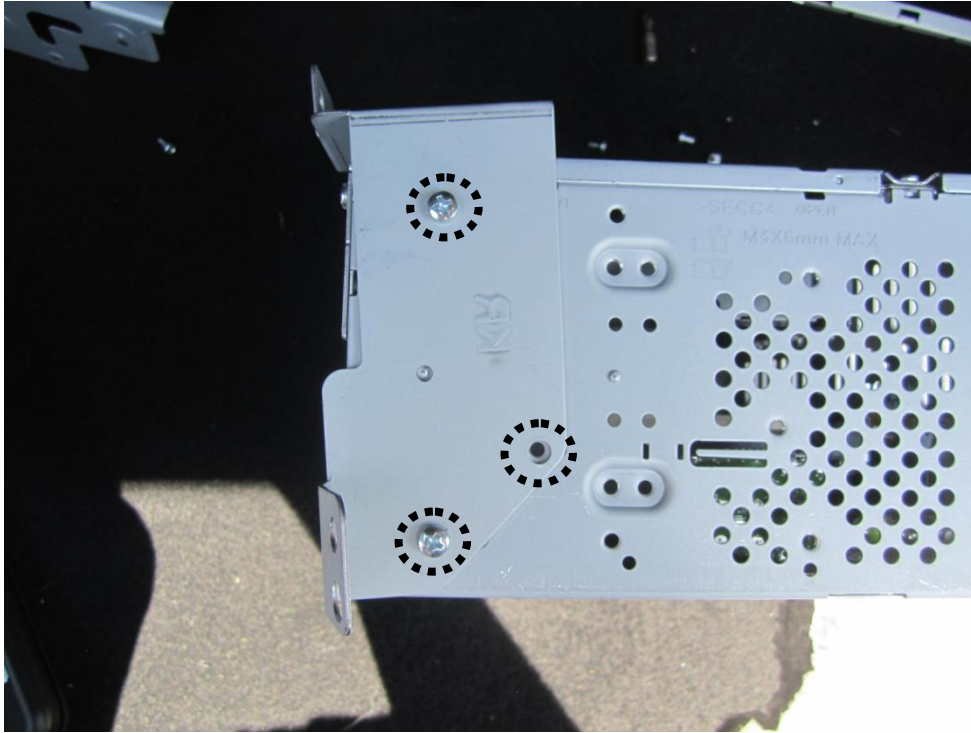
Screw the front replacement bracket to the radio head unit and ensure it is mounted underneath the CD-ROM drive as shown.

*(Images shown on this page may vary)*



Front view of the front replacement bracket with Trip Interface board assembled. Make sure the top cover is screwed back on to the radio unit.


	CLASSIFICATION <b>Installation Manual</b>	SKU <b>ENB-X5-QFU</b>	DOCUMENT NO. <b>X5-K-7</b>	
	UNAVI X5 for Kia Optima UVO Installation Guide		VERSION <b>1.2</b>	PAGE <b>19</b>



Screw on the replacement mounting brackets (Left and Right) as shown.



Open the glove box and twist the knobs on both sides to loosen the compartment.

	CLASSIFICATION <b>Installation Manual</b>	SKU <b>ENB-X5-QFU</b>	DOCUMENT NO. <b>X5-K-7</b>	
	UNAVI X5 for Kia Optima UVO Installation Guide		VERSION <b>1.2</b>	PAGE <b>20</b>




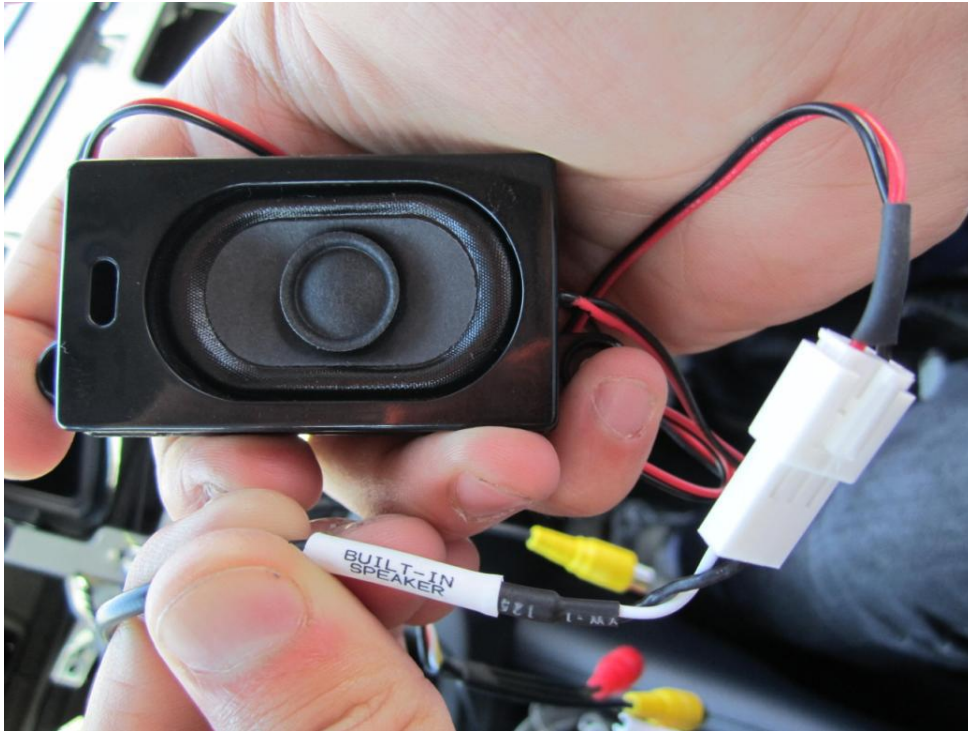
Route the Control box interface cable around from behind the glove box and out through the center dash panel opening.

*(Images shown on this page may vary)*

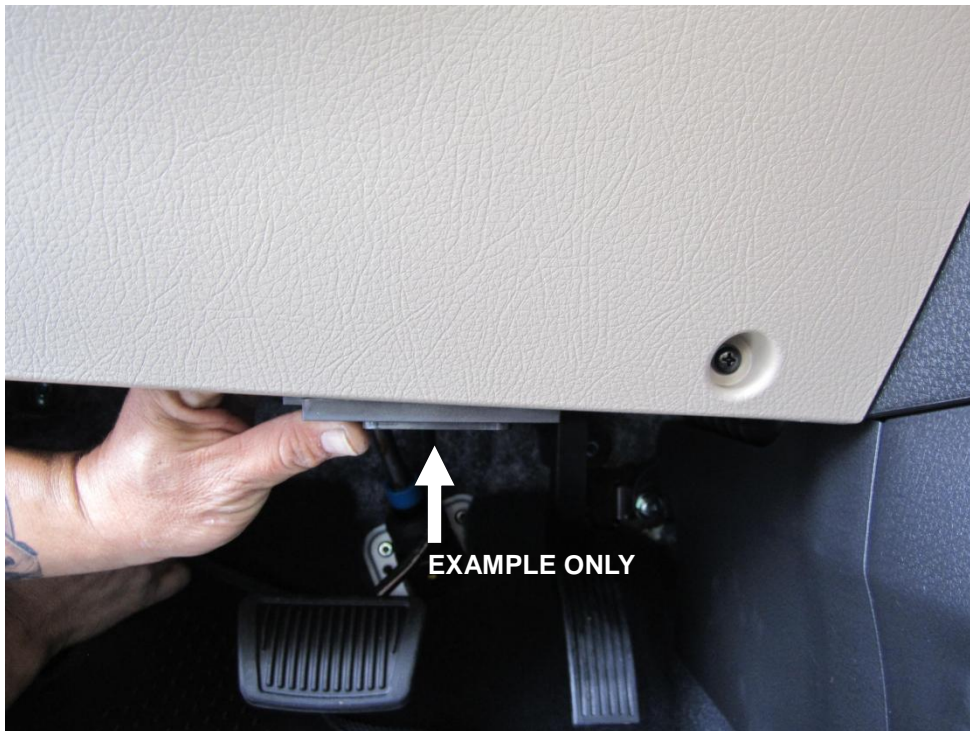


Mount the control box inside the glove box using a double-sided tape or Velcro.


	CLASSIFICATION	SKU	DOCUMENT NO.	
	Installation Manual	ENB-X5-QFU	X5-K-7	
	UNAVI X5 for Kia Optima UVO Installation Guide		VERSION	PAGE
			1.2	21



Connect the external speaker to the female connector labeled “BUILT-IN SPEAKER”  
 This speaker will allow sound output from the UNAVI system when the audio is in  
 XM/Radio/CD/MP3/Bluetooth mode.  
 Sound output from the system will use the factory speakers under “AUX” mode only.



If you choose to install the external speaker, choose a location closest to the driver (exposed or hidden) and where it can be mounted from causing any obstructions to other components.


	CLASSIFICATION <b>Installation Manual</b>	SKU <b>ENB-X5-QFU</b>	DOCUMENT NO. <b>X5-K-7</b>	
	UNAVI X5 for Kia Optima UVO Installation Guide		VERSION <b>1.2</b>	PAGE <b>22</b>



Make sure the GPS receiver is mounted (rounded side up facing the sky) to a non-metallic panel or on the front windshield glass. Route the antenna cable carefully to avoid damage.

*(Images shown on this page may vary)*

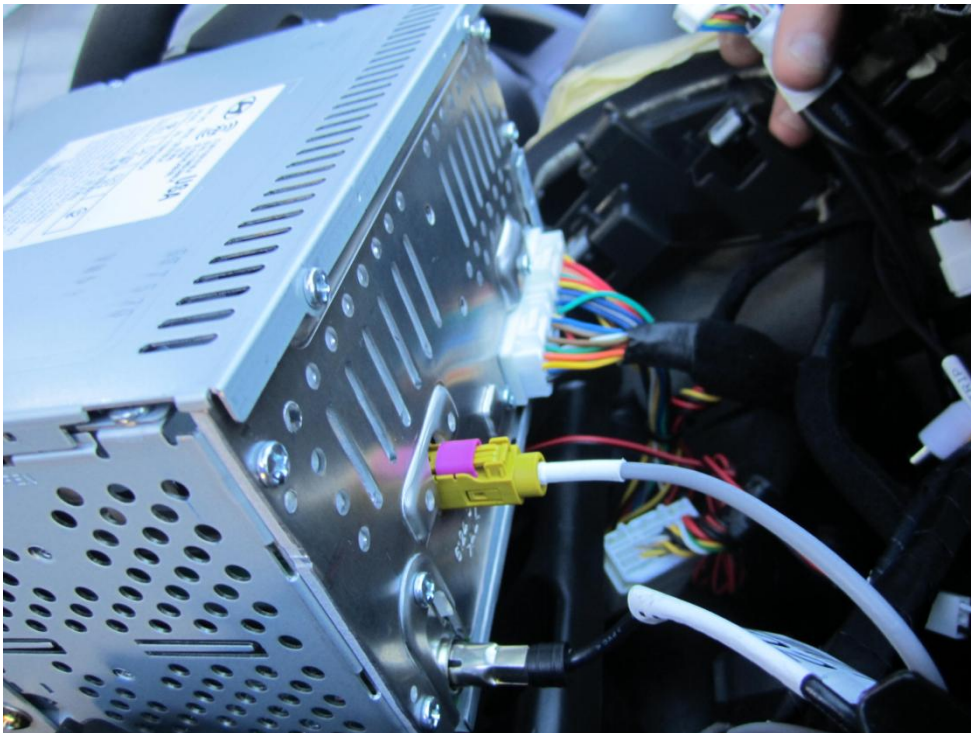


	CLASSIFICATION <b>Installation Manual</b>	SKU <b>ENB-X5-QFU</b>	DOCUMENT NO. <b>X5-K-7</b>	
	UNAVI X5 for Kia Optima UVO Installation Guide		VERSION <b>1.2</b>	PAGE <b>23</b>




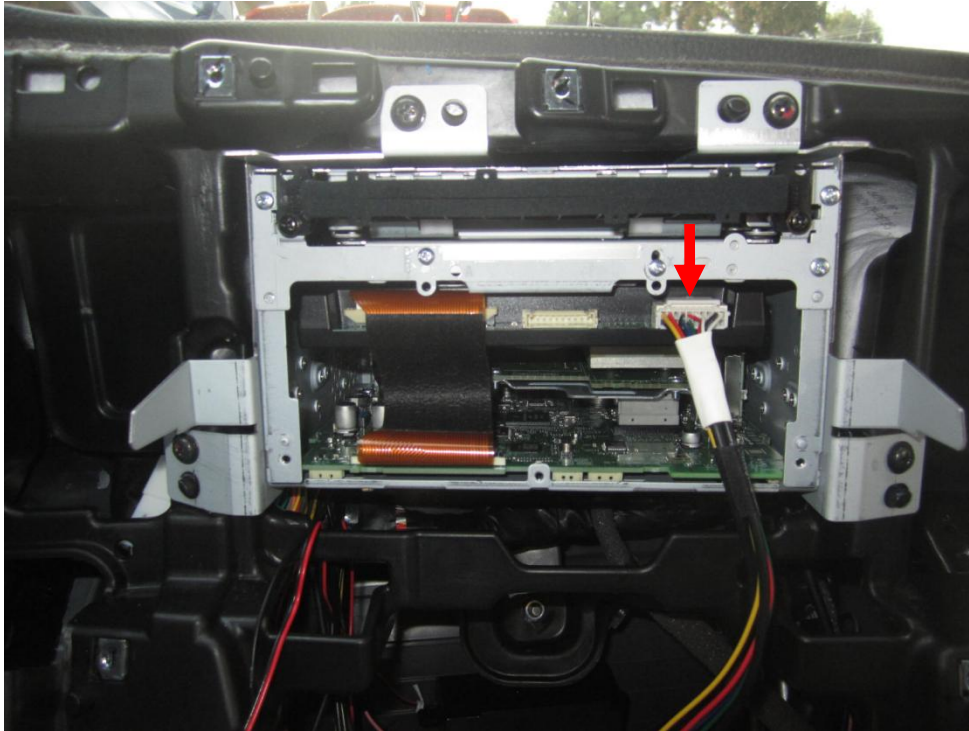
Connect the main factory audio cable (24-pin) to the SMART cable harness.  
Clear of any obstructing cables or components behind the dash panel.

*(Images shown on this page may vary)*

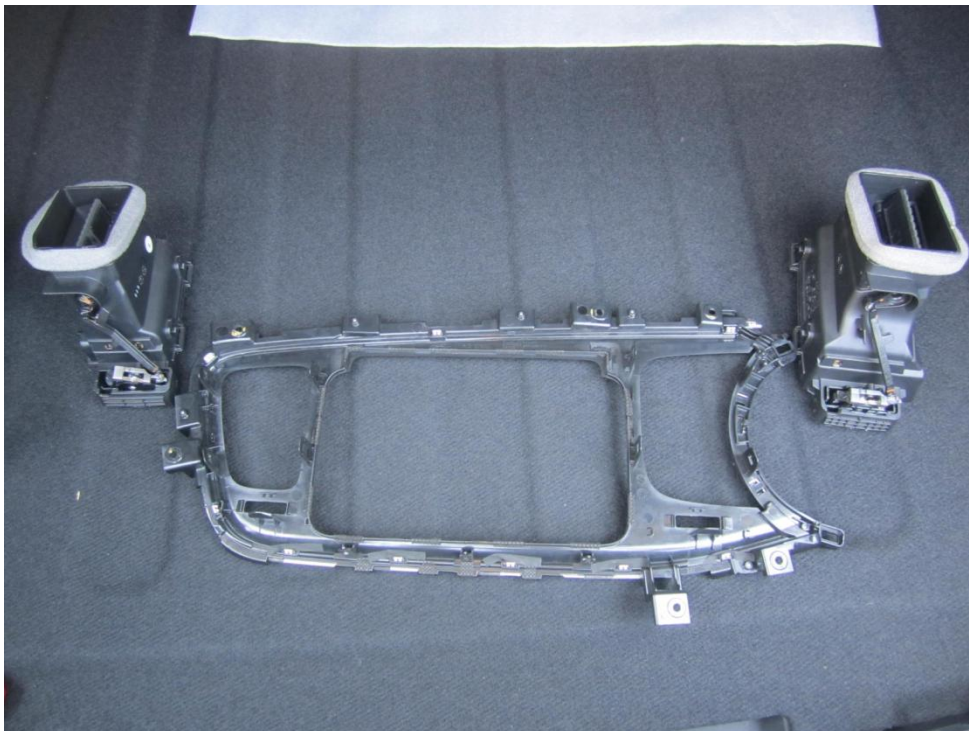


Reconnect the remaining audio unit connectors and cable as shown.  
Clear of any obstructing cables and mount the audio unit back into the dash panel.

	CLASSIFICATION <b>Installation Manual</b>	SKU <b>ENB-X5-QFU</b>	DOCUMENT NO. <b>X5-K-7</b>
	UNAVI X5 for Kia Optima UVO Installation Guide		VERSION <b>1.2</b>




Check the cables are not being too tightly squeezed in the back of the audio unit.  
 Plug in the 20-pin connector to the Trip Interface board as shown.  
*(Image shown above may vary)*

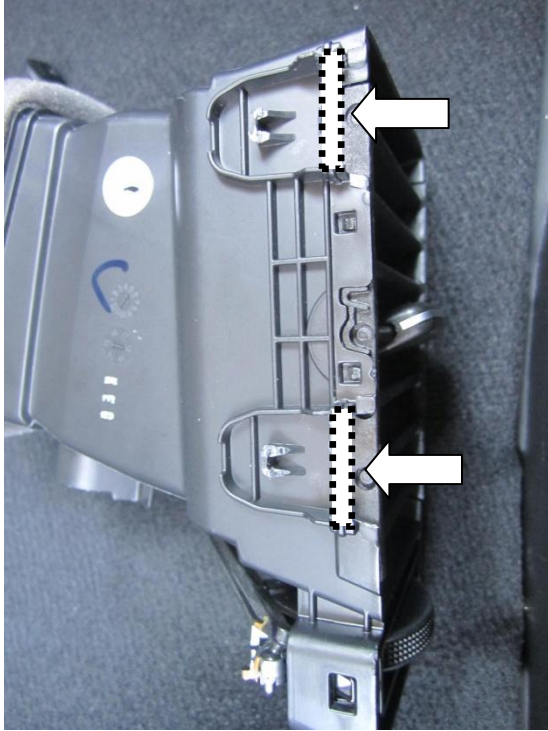


Carefully disassemble the two air vents from the factory center fascia panel.

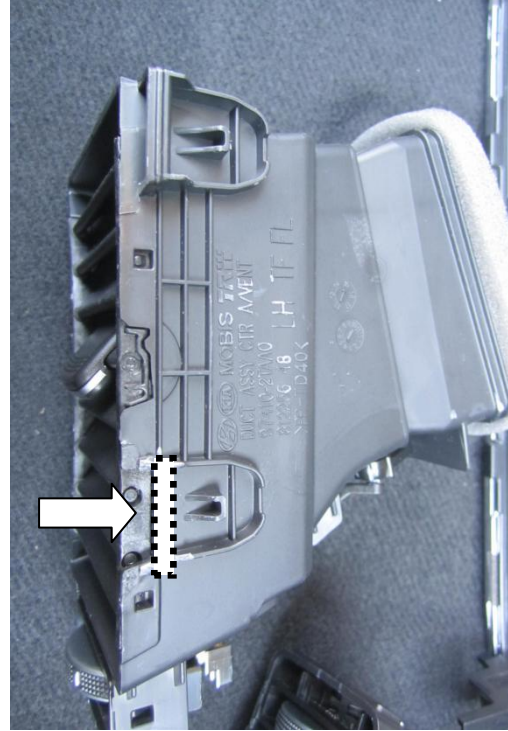


	CLASSIFICATION <b>Installation Manual</b>	SKU <b>ENB-X5-QFU</b>	DOCUMENT NO. <b>X5-K-7</b>
	<b>UNAVI X5 for Kia Optima UVO Installation Guide</b>		VERSION <b>1.2</b>

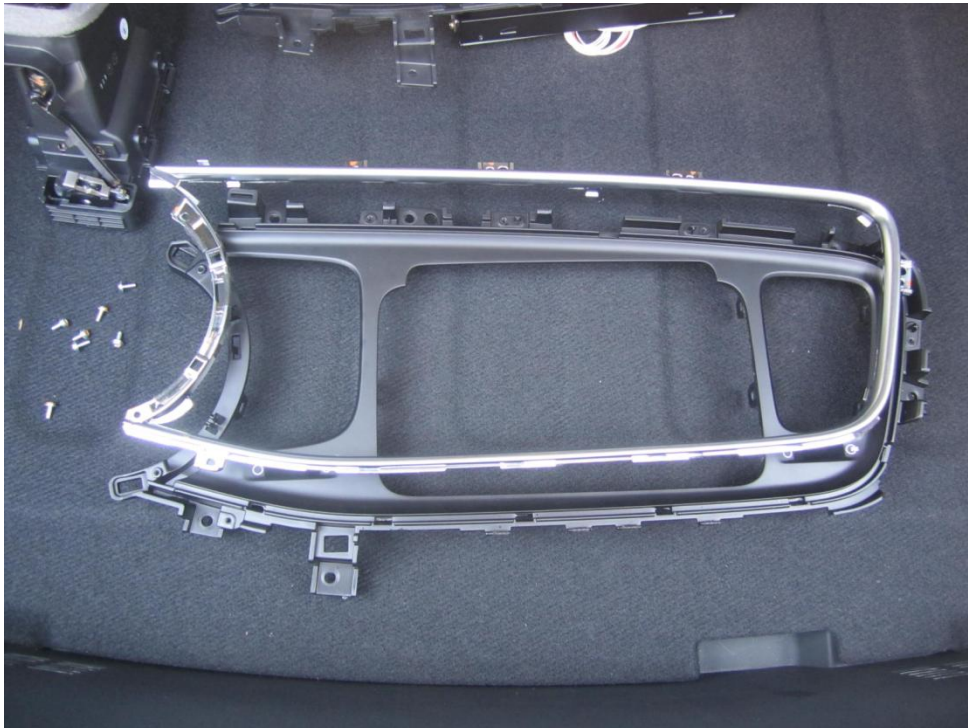
Passenger Side Air Vent




Driver Side Air Vent

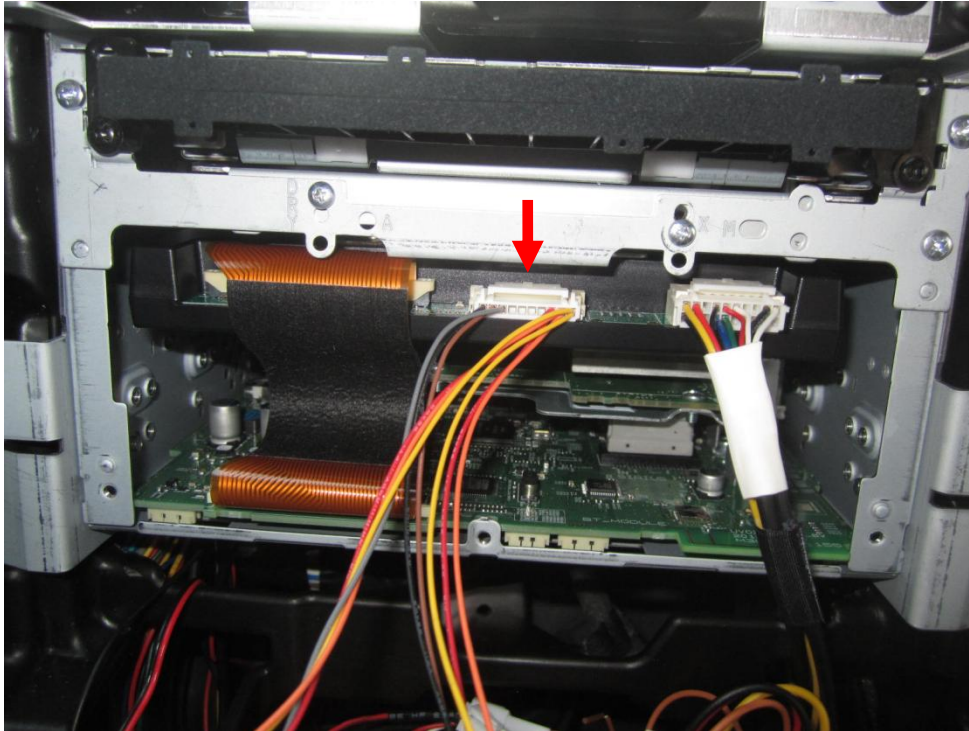


Notch off the edges on the inner side of the locking tab shown in white arrows.

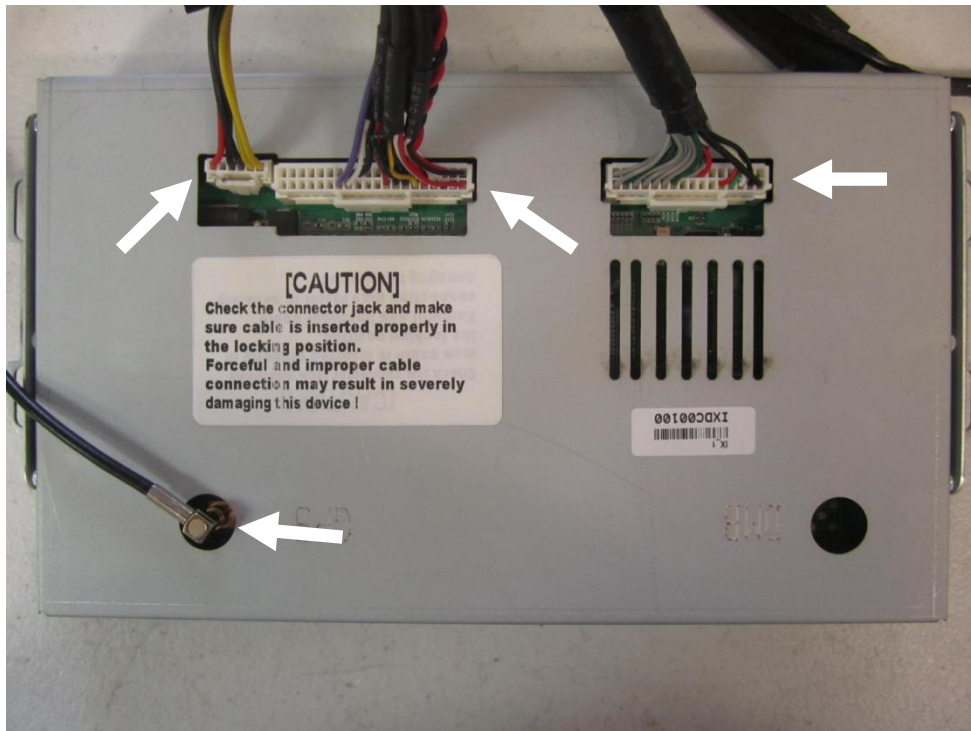


Remove the silver trim piece from the center fascia panel.  
Reassemble the silver trim and the modified air vents onto the Unavi fascia kit.


	CLASSIFICATION <b>Installation Manual</b>	SKU <b>ENB-X5-QFU</b>	DOCUMENT NO. <b>X5-K-7</b>
	UNAVI X5 for Kia Optima UVO Installation Guide		VERSION <b>1.2</b>



Plug in the 10-pin keypad cable to the Trip Interface board as shown.  
*(Image shown above may vary)*



Connect the GPS antenna to the "GPS" port located behind the LCD screen.  
Plug in the remaining cables to the back of the LCD panel as shown.

	CLASSIFICATION <b>Installation Manual</b>	SKU <b>ENB-X5-QFU</b>	DOCUMENT NO. <b>X5-K-7</b>	
	<b>UNAVI X5 for Kia Optima UVO Installation Guide</b>		VERSION <b>1.2</b>	PAGE <b>27</b>



Assemble the center fascia panel and climate control assembly back into the dash.  
*\*Remove the plastic CD guide if CD doesn't insert/eject properly or fascia kit doesn't fit right.*

### Installation Complete!



For additional information, please visit [www.buyunavi.com](http://www.buyunavi.com) or call 855-558-6284.

- Thank you for choosing UNAVI -