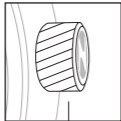


PLEASE READ THE FOLLOWING BEFORE UNSCREWING THE CROWN

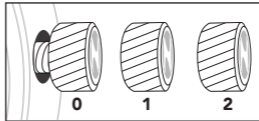
SCREW-DOWN CROWN

Screw-down crowns are used to ensure water resistance. Always be certain that your crown is tightly screwed down. (Position "0", "1" and "2" are NOT secured for water resistance). Do NOT unscrew your crown while you are in any environment where moisture is present.



CLOSED

Tightly screwed
and water resistant



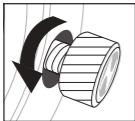
OPENED

Not secured for water resistant

**Crown
positions**

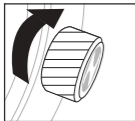
USING THE SCREW-DOWN CROWN

Do NOT pull the crown unless it is unscrewed first.



TO UNSCREW: Turn the crown anti-clockwise until it turns freely without tension.

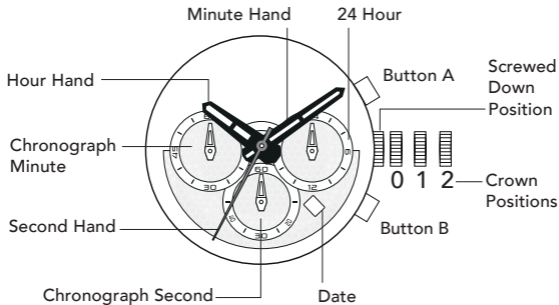
Once the crown is fully unscrewed, it automatically sets itself into position "0". GENTLY pull the crown out to the other desired positions for watch setting.



TO SCREW: Push the crown all the way in (towards the watch) THEN begin to turn clockwise until it is tightly screwed down.

Note: Failure to securely screw down the crown after setting the watch may affect its water resistance.

QUARTZ CHRONOGRAPH WITH DATE



DATE SETTING

1. Unscrew the crown by turning it anti-clockwise until it turns freely.
2. Pull the crown out to position 1.
3. Turn the crown clockwise to set the date.
4. Push the crown back and screw it tight by turning clockwise.

**** Do not set the date between 9:00 P.M. and 1:00 A.M, otherwise the day may not change properly.***

TIME SETTING

1. Unscrew the crown by turning it anti-clockwise until it turns freely.
2. Pull out the crown to position 2.
3. Turn the crown to set the time.
4. Push the crown back to position 0 and screw it tight by turning clockwise.

**** Make sure AM/PM is set correctly***

**** When the crown is at the position 2, do not press any button.***

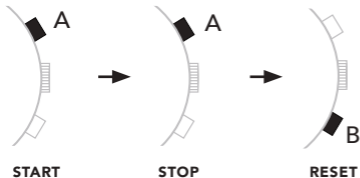
Otherwise the chronograph hands will move.

HOW TO USE THE CHRONOGRAPH

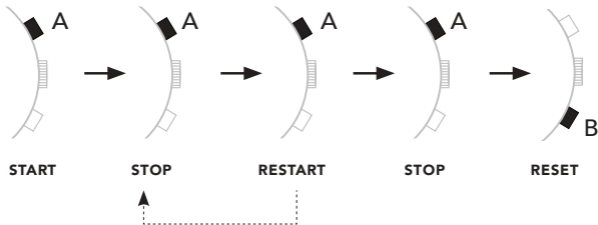
- * The measurement time is indicated by the chronograph hands that move independently of the center hands (and 24-hour hand).
- * The chronograph can measure up to 60 minutes.

Standard measurement (e.g. 100m race)

Press the buttons in the following order :

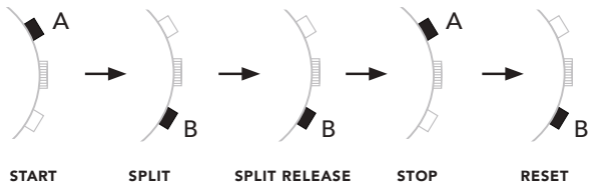


Accumulated elapsed time measurement (e.g. basketball game)



****Restart and stop of the chronograph can be repeated as many times as necessary by pressing button A.***

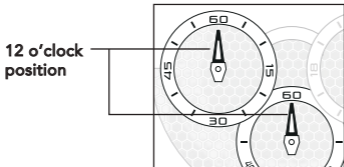
Split time measurement (e.g. 5,000m race)



*** Measurement and release of the split time can be repeated as many times as necessary by pressing button B.**

ADJUSTING THE CHRONOGRAPH HANDS POSITION

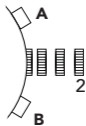
- * Before setting the time, check if all the chronograph hands - second and minute - are at the "0" position (12 o'clock position).
- * If the chronograph is in use, press the buttons in the following order to reset it, and then, check if the hands return to "0" position.



- * If the chronograph is counting : **Button A** → **Button B**
- * If the chronograph is stopped : **Button B**
- * If the split time is displayed : **Button B** → **Button A** → **Button B**

If either of the chronograph hands are not in the "0" position, reset them following the procedure below.

1. Unscrew the crown by turning it anti-clockwise until it turns freely.
2. Pull the crown out to position 2.



3. Press button A or B to reset all chronograph hands to "0" position.
 - * ***The chronograph minute hand moves correspondingly with the chronograph second hand.***
 - * ***Pressing and holding the respective buttons moves the hands quickly.***
4. Once the chronograph hands are adjusted, push the crown back and screw it tightly.