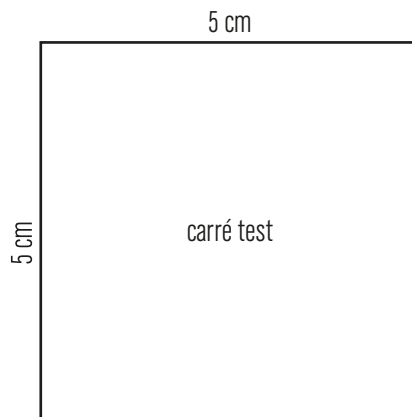


MAKE MY LEMONADE

—
**PONCHO
ADULTE - T.U**



TAILLES / SIZE

T.U

INFOS / TIPS

- Ce patron comporte 3 pièces.
- Les valeurs de couture sont incluses et sont de 1cm sauf indications contraires.

- This pattern includes 3 pieces.
- The seam allowance is included and is of 1 cm.

LÉGENDE / KEY



droit fil / straight grain
D.F / S.G

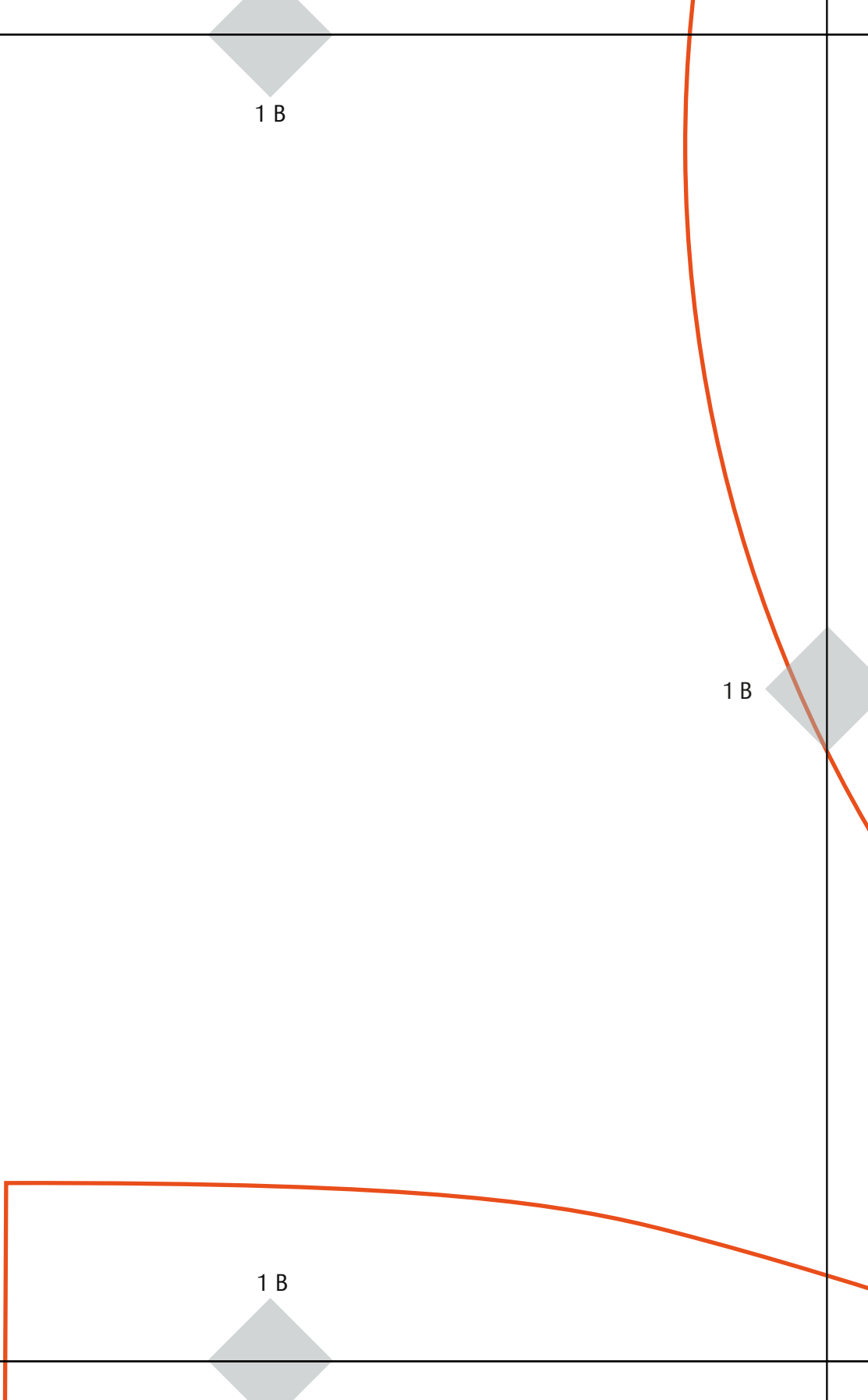
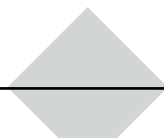
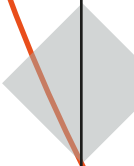
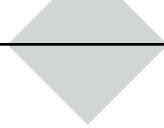
1 A

1 A

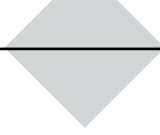
1 B

1 B

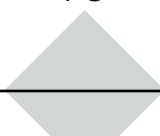
1 B



1 C

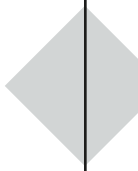


1 C



D.F./S.G

1 C



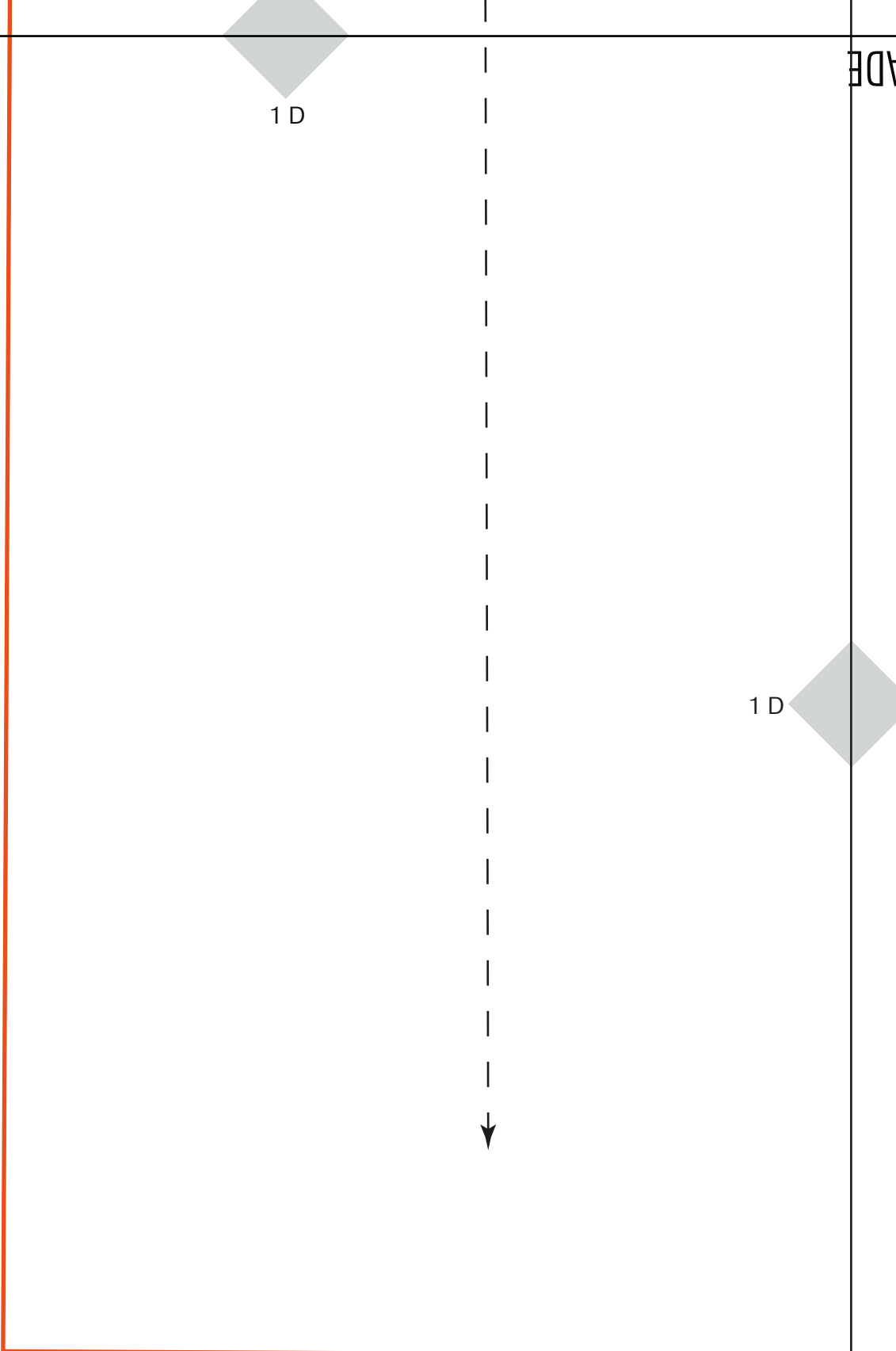
X sur l'envers)
(the wrong side)

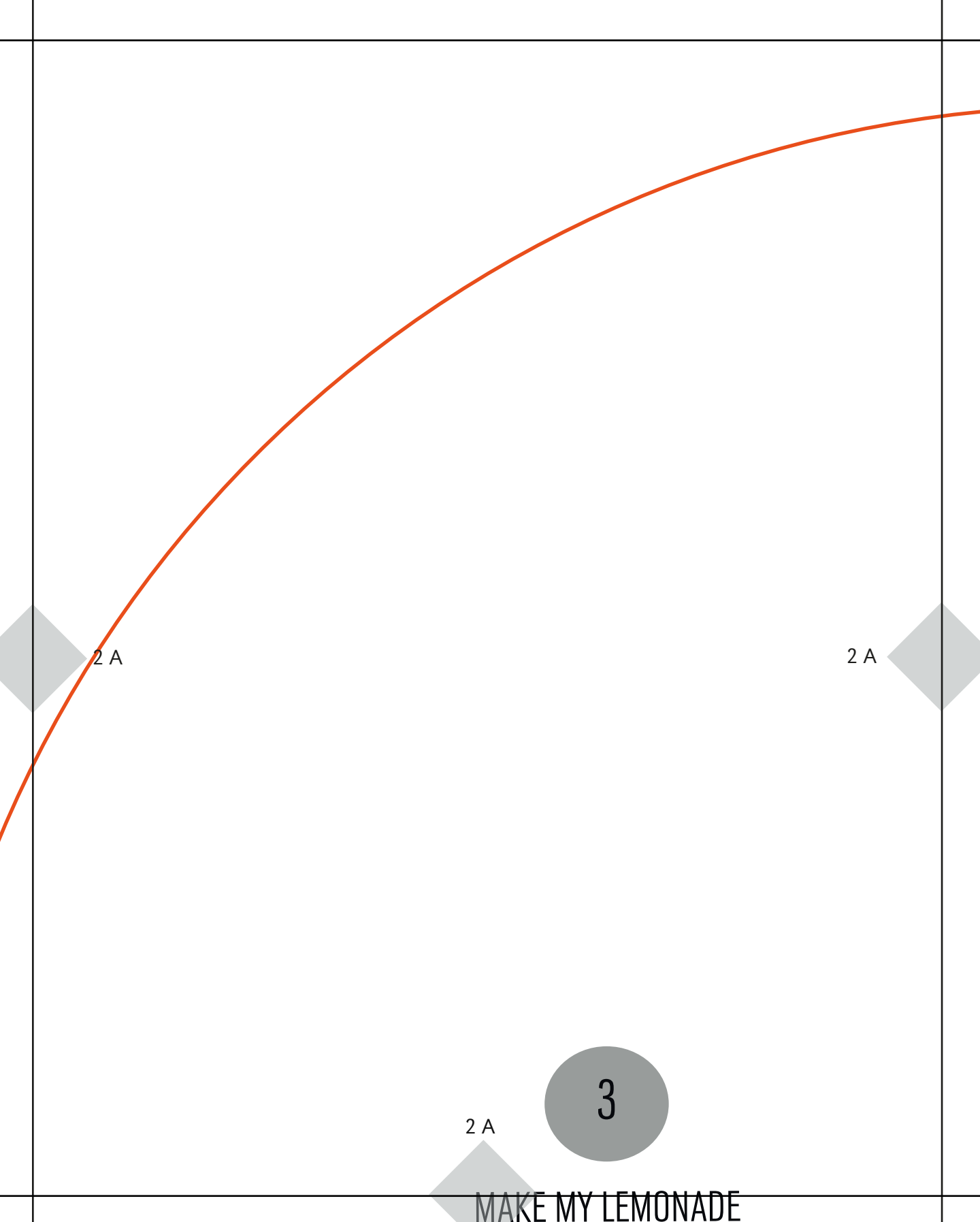
<2

ADP

1 D

1 D





2 A

2 A

2 A

3

MAKE MY LEMONADE

MAKE MY LEMONADE

2 B

Poncho
adulte

rond/ circle x1

(couper 1x sur l'endroit)
(cut 1x one the right side)



2 B

2 B

2 B

2 C

2 C

2 C



capuche/ hood x2
(couper 1x sur l'endroit et 1x sur
(cut 1x one the right and 1x on the v

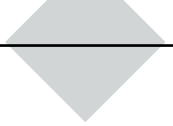
Poncho
adulte

2 C

MAKE MY LEMONADE



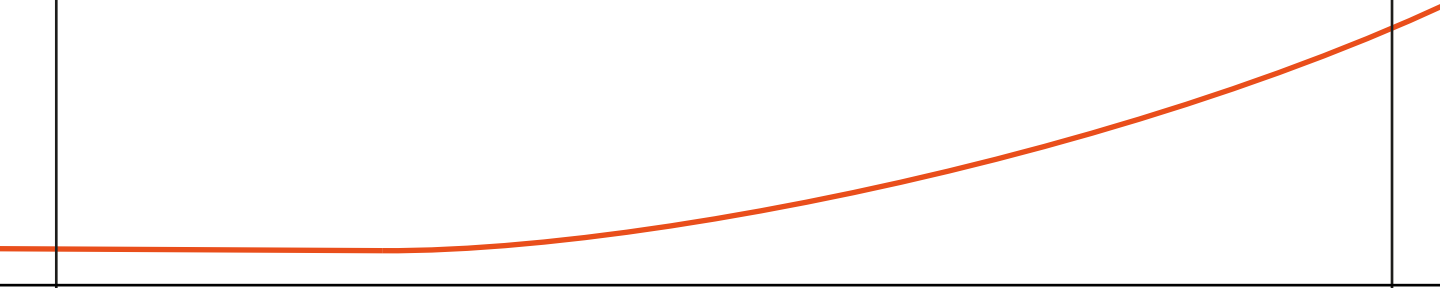
2 D

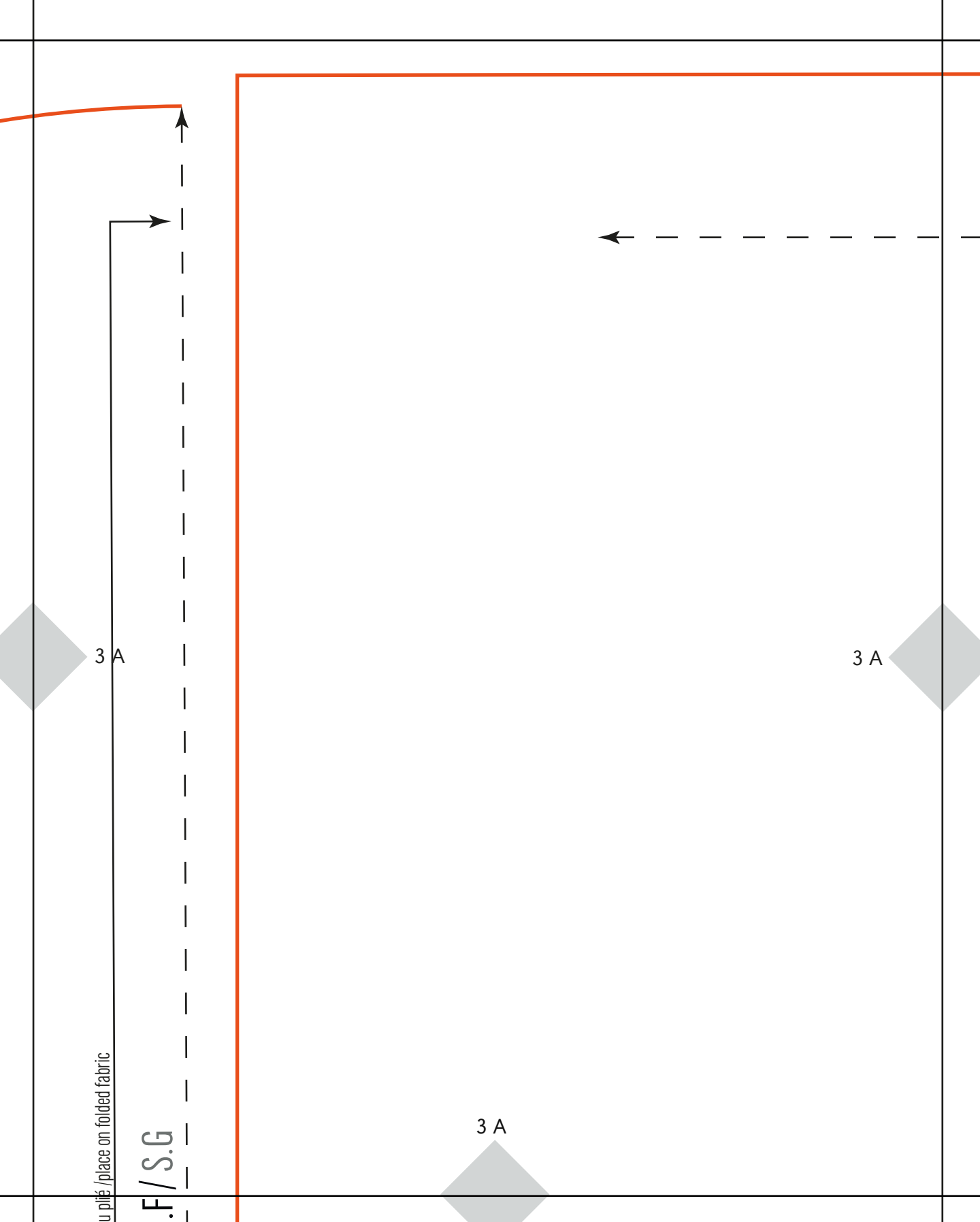


2 D



2 D





u plié / place on folded fabric

.F/ S.G

3 A

3 A

3 A

placer sur le tissu plié / place

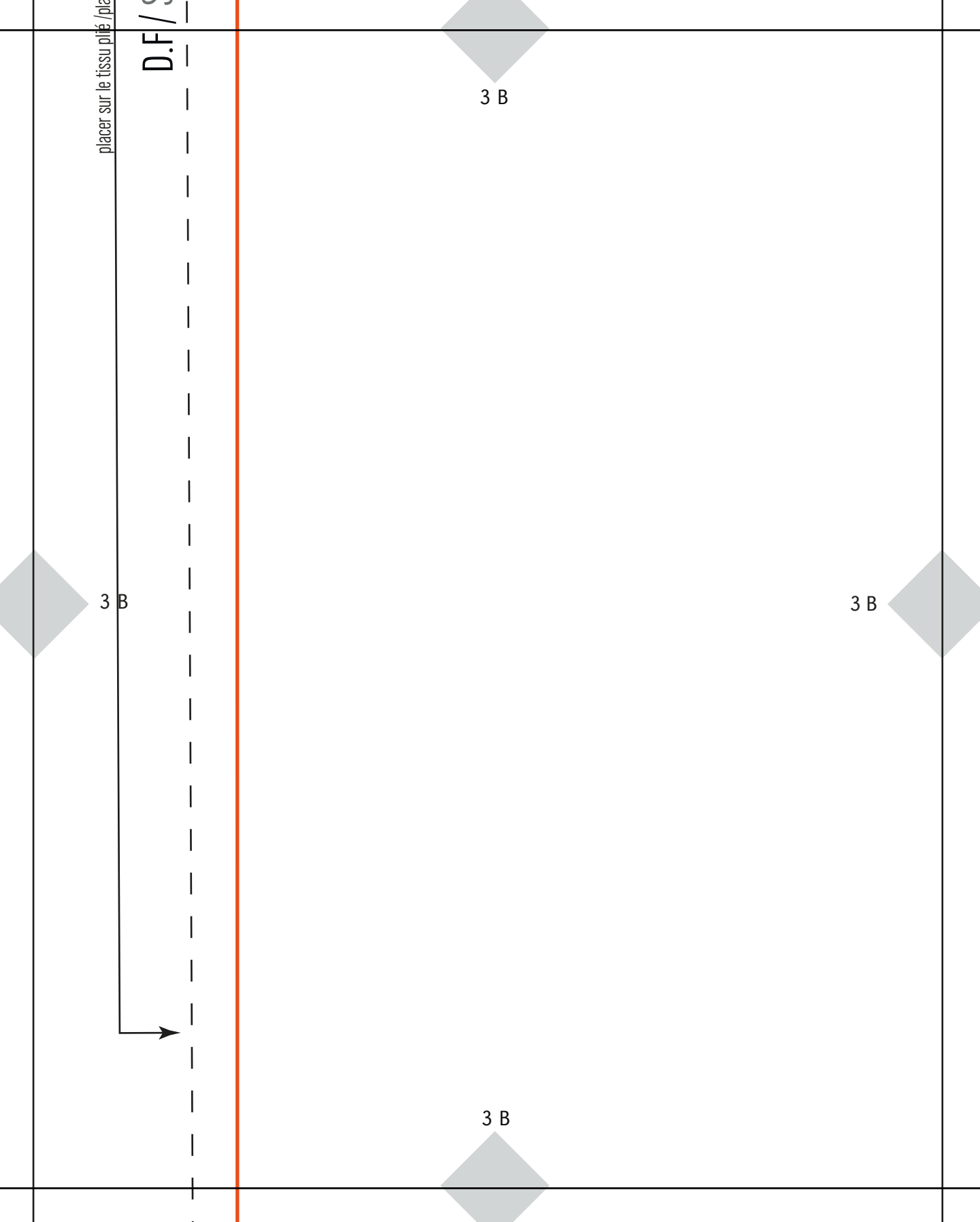
D.F / S

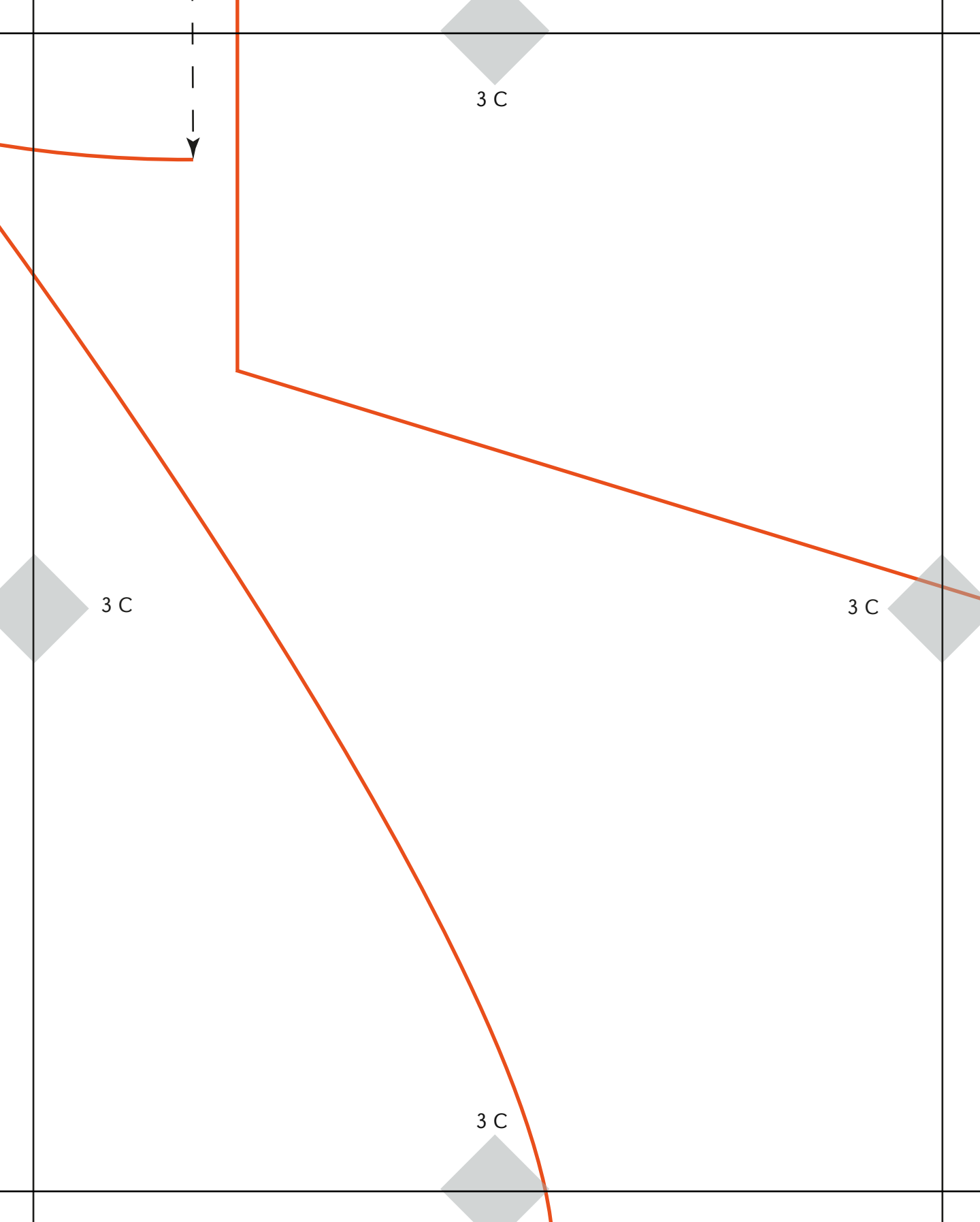
3 B

3 B

3 B

3 B



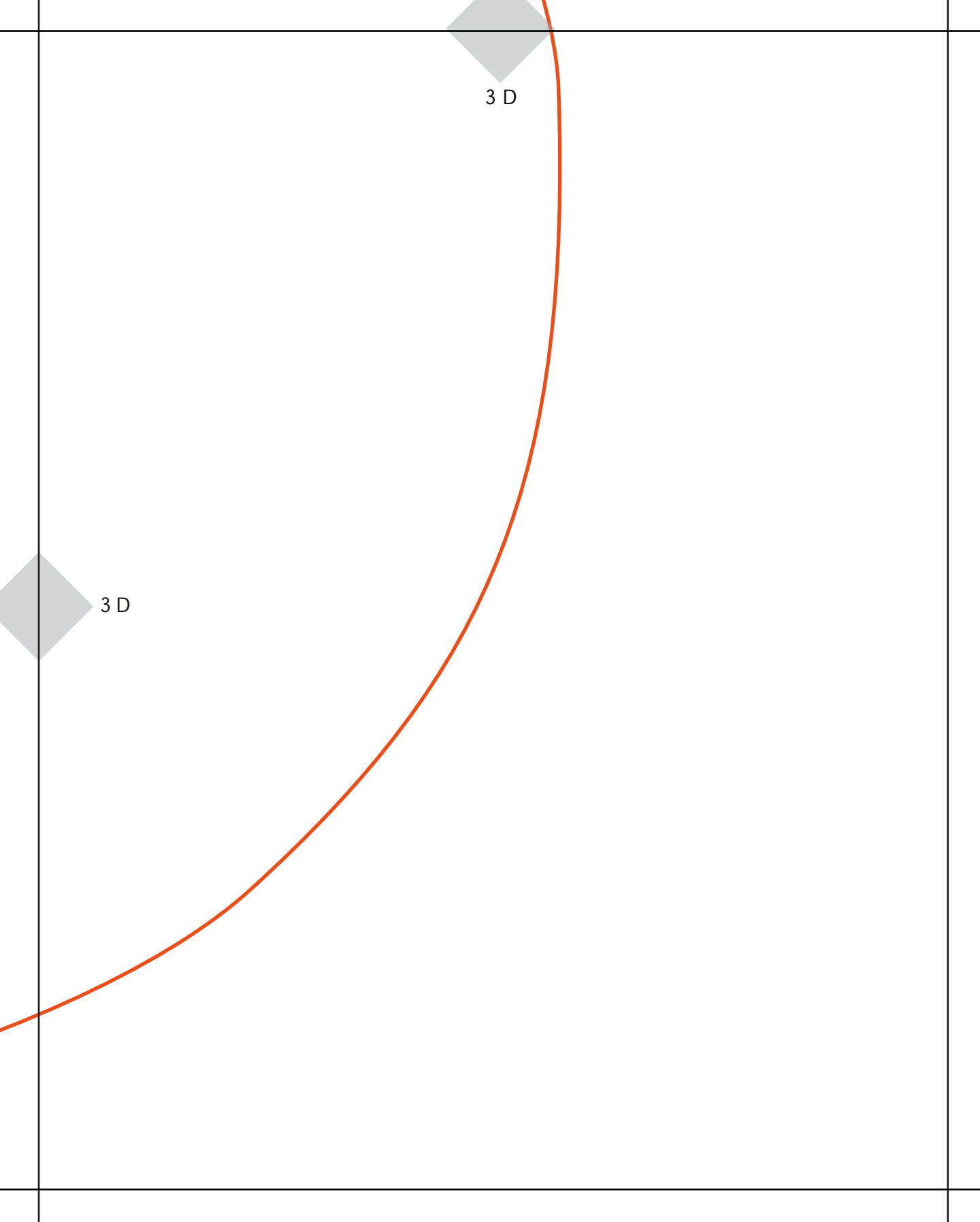


3 C

3 C

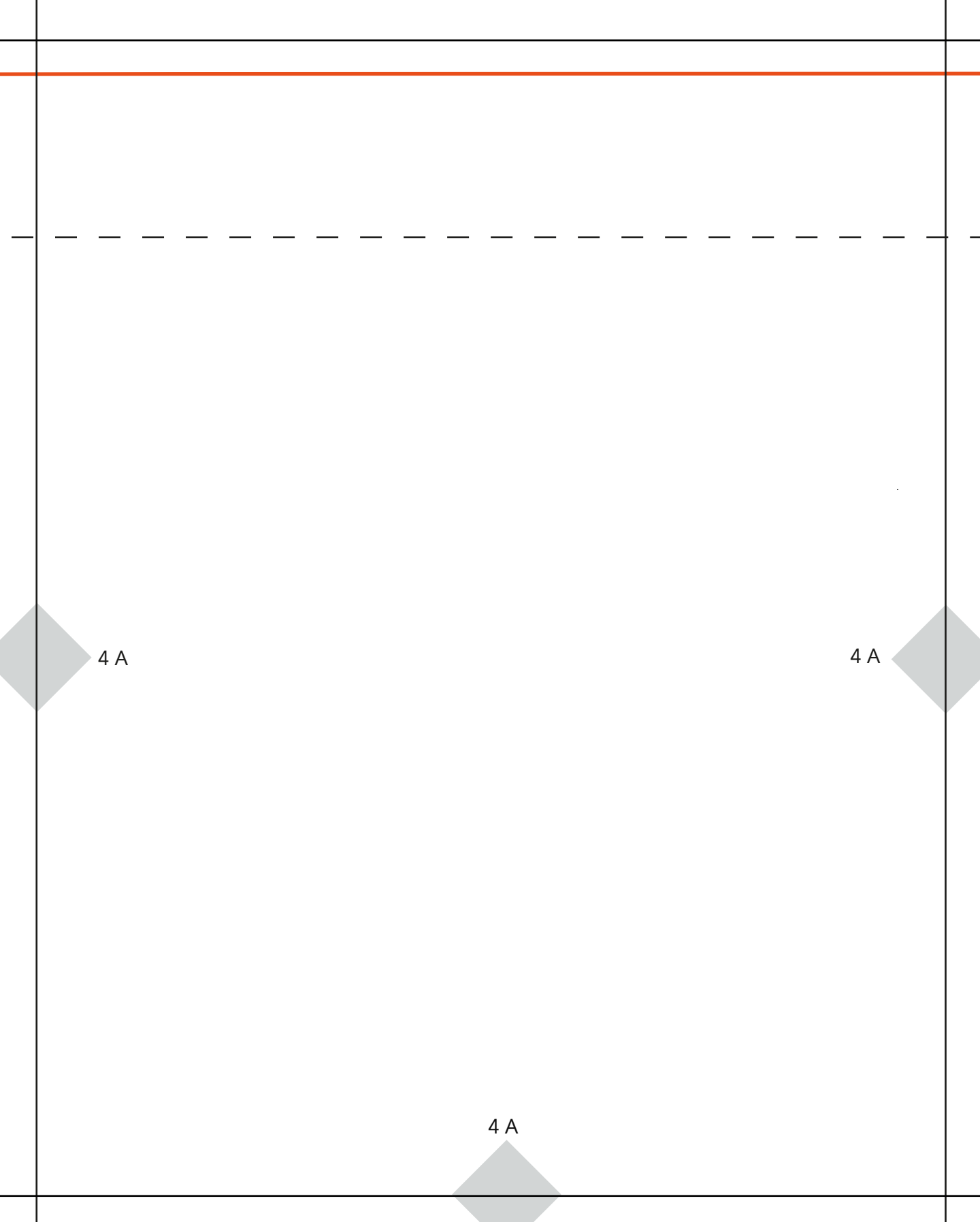
3 C

3 C



3 D

3 D



4 A

4 A

4 A

4 B

4 B

4 B

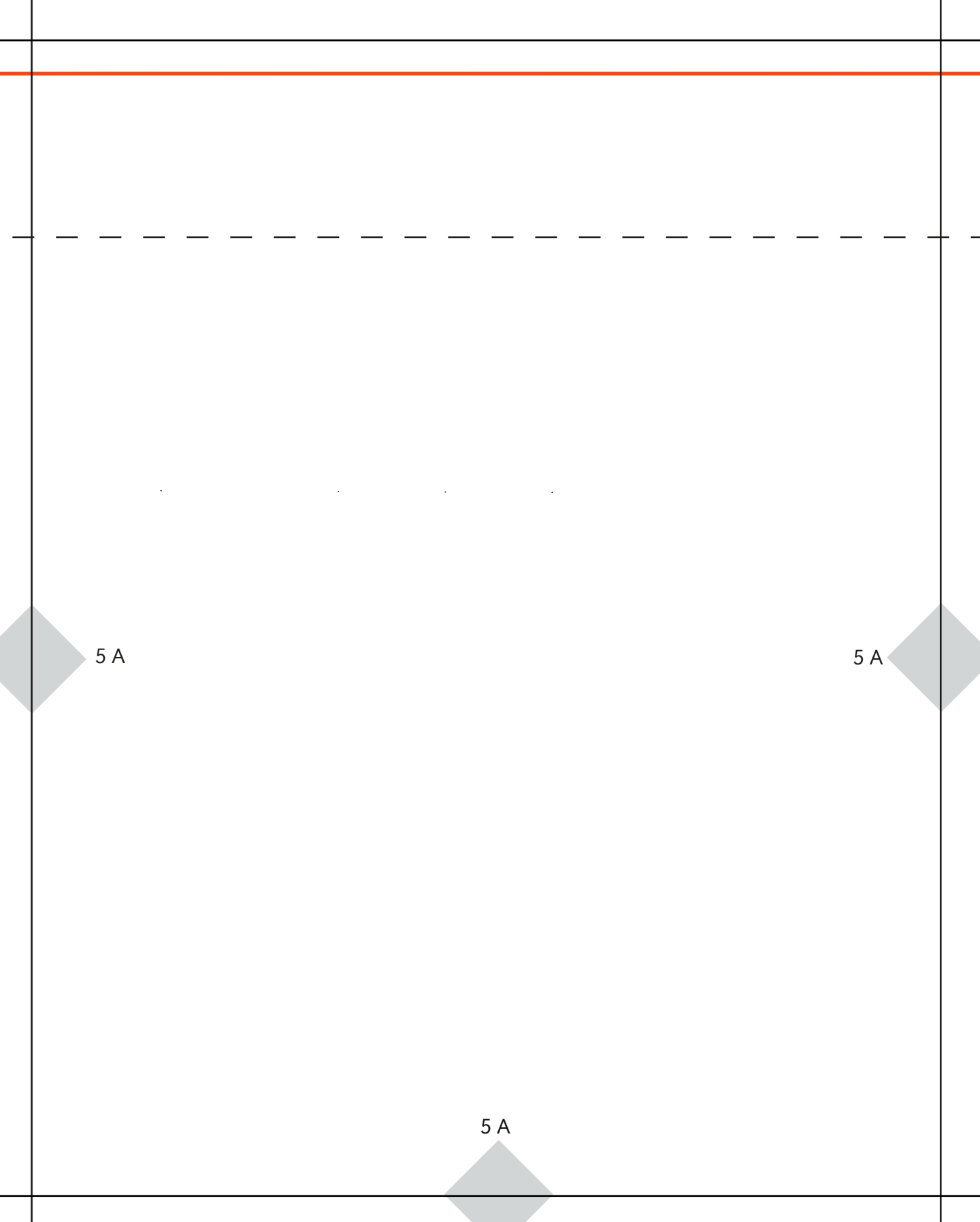
4 B



4 C

4 C

4 C



5 A

5 A

5 A



5 B

5 B

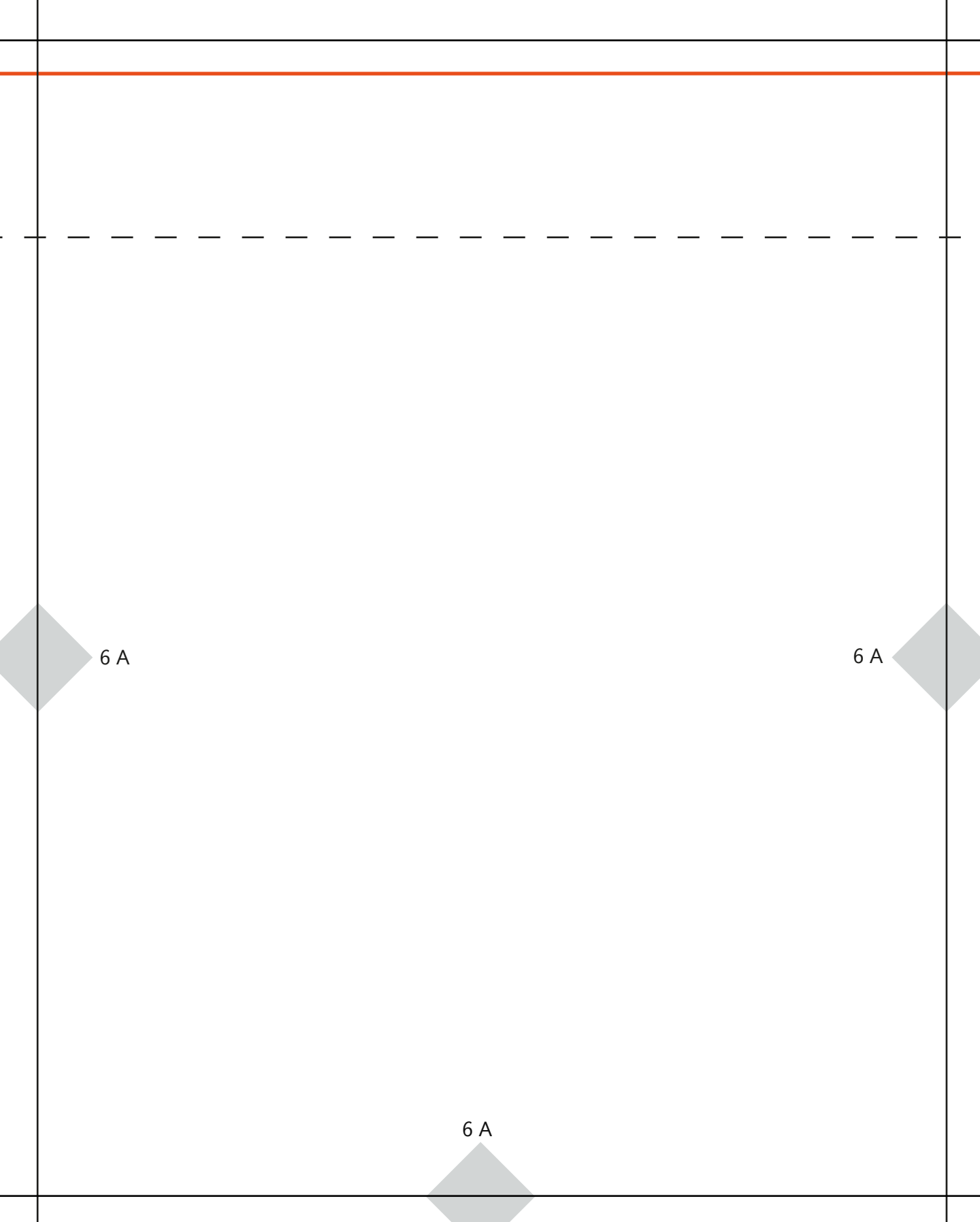
5 B

5 B

5 C

5 C

5 C



6 A

6 A

6 A



6 B

6 B

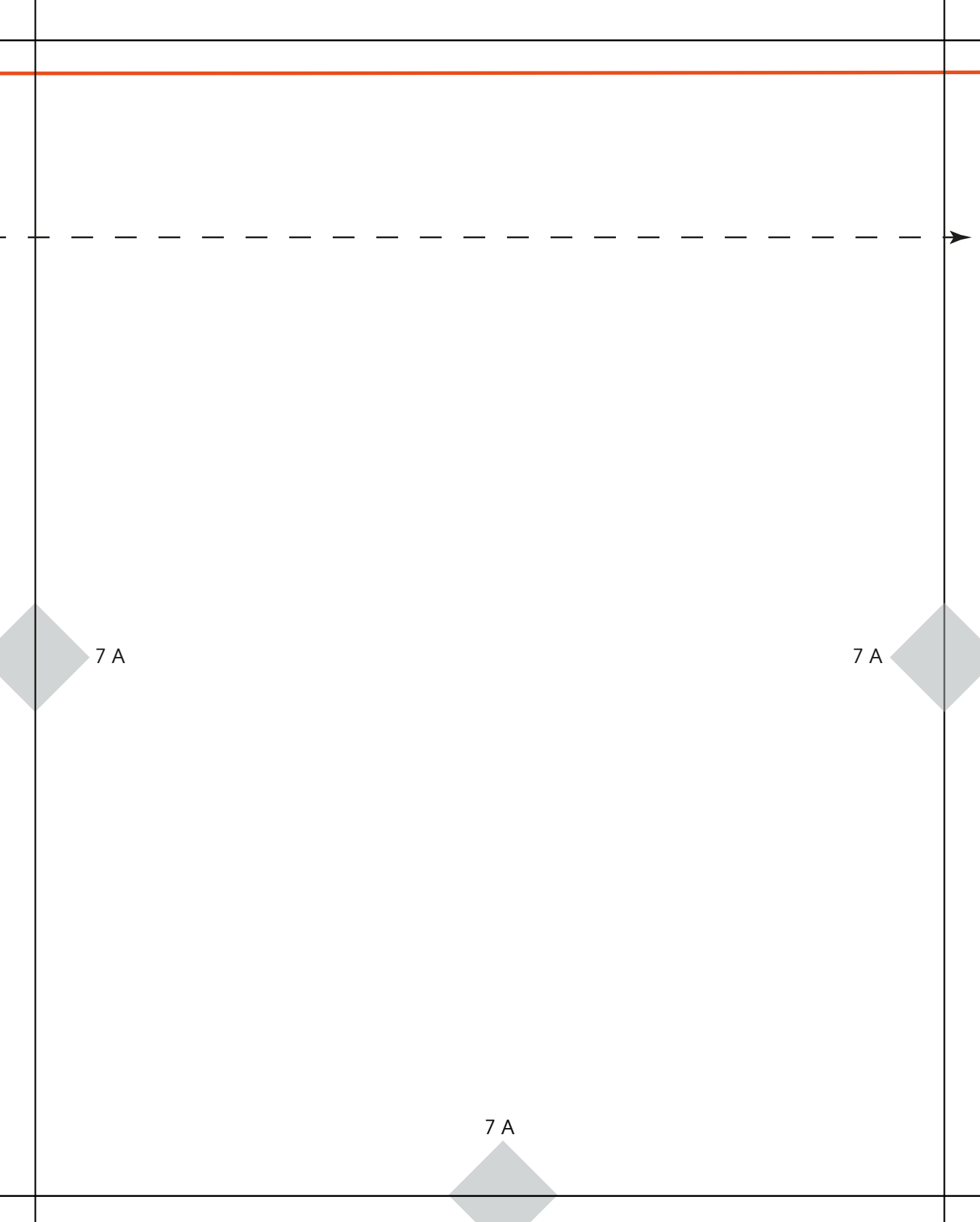
6 B

6 B

6 C

6 C

6 C



7 A

7 A

7 A



7 B

7 B

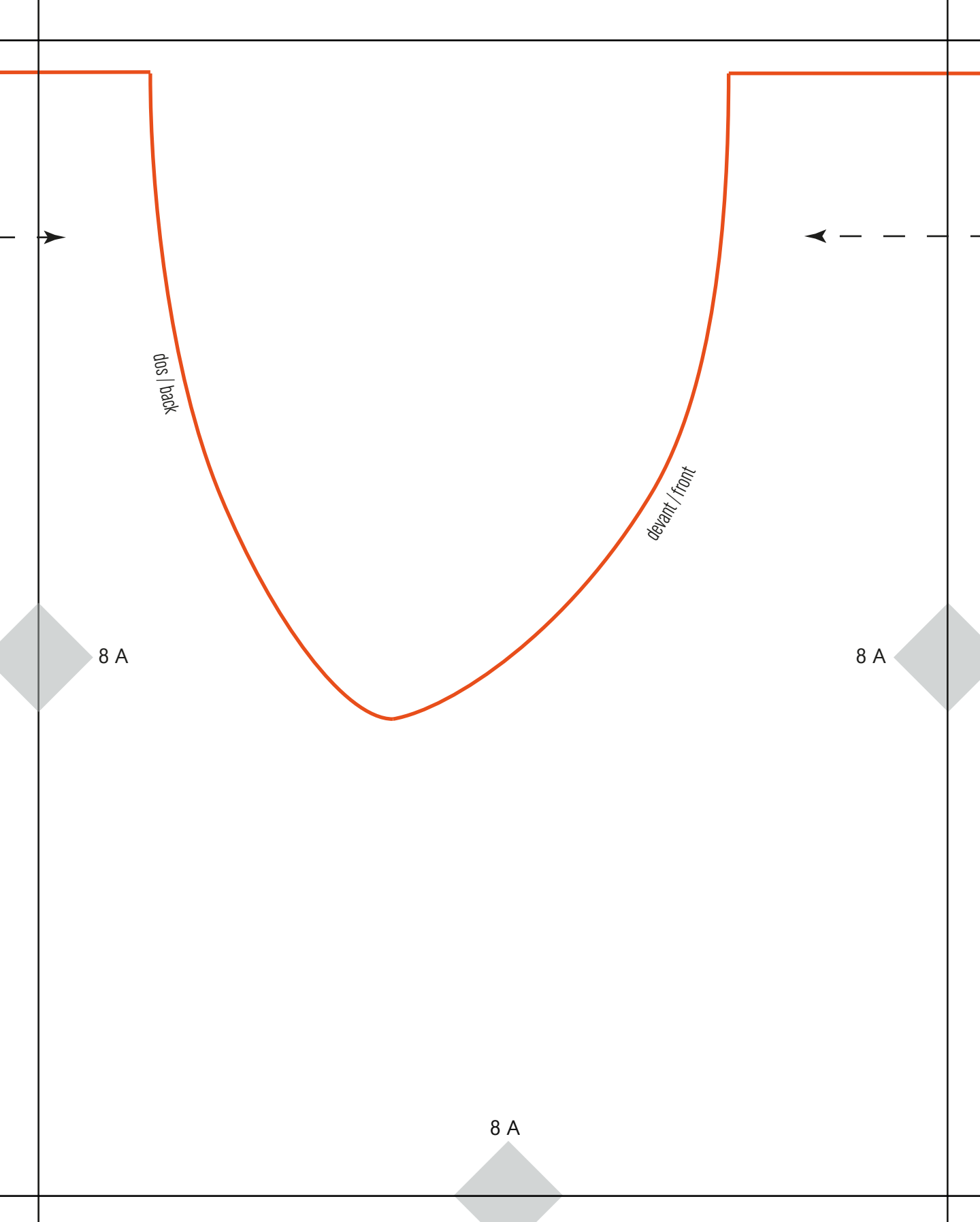
7 B

7 B

7C

7C

7C



dors / back

devant / front

8 A

8 A

8 A



8 B

8 B

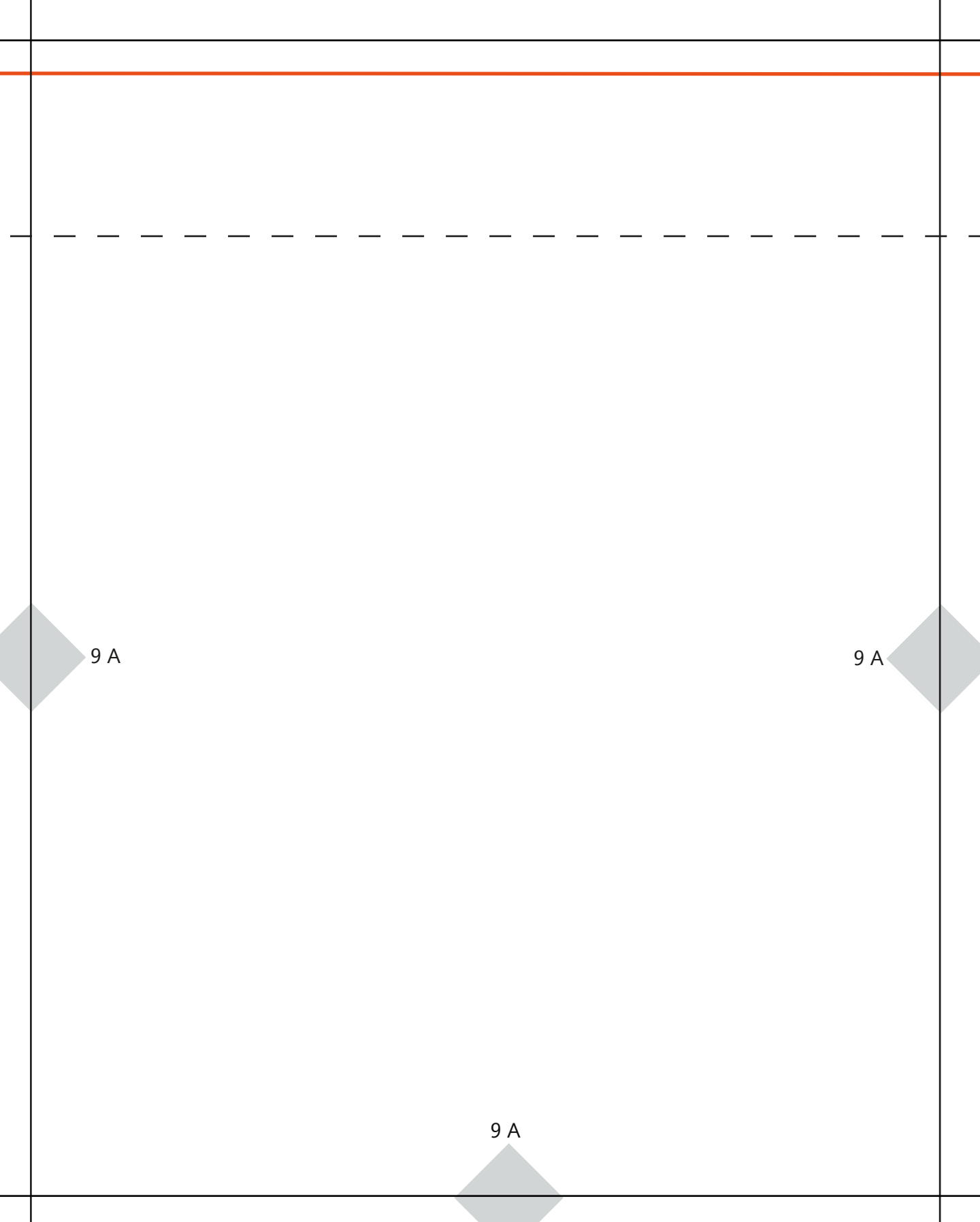
8 B

8 B

8 C

8 C

8 C



9 A

9 A

9 A

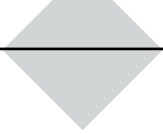


9 B

9 B

9 B

9 B



9 C



9 C



9 C



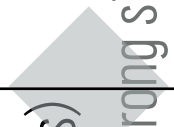
D.F / S.G



10 A



10 A



10 A

(rong side)

1

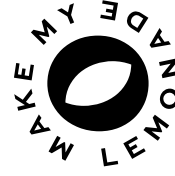
MAKE MY LEMONADE

Poncho
adulte

BUSTE / BUSTE X2

(couper 1x endroit, 1x envers)

(cut 1x on the right side, 1x on the wrong



10 B

10 B

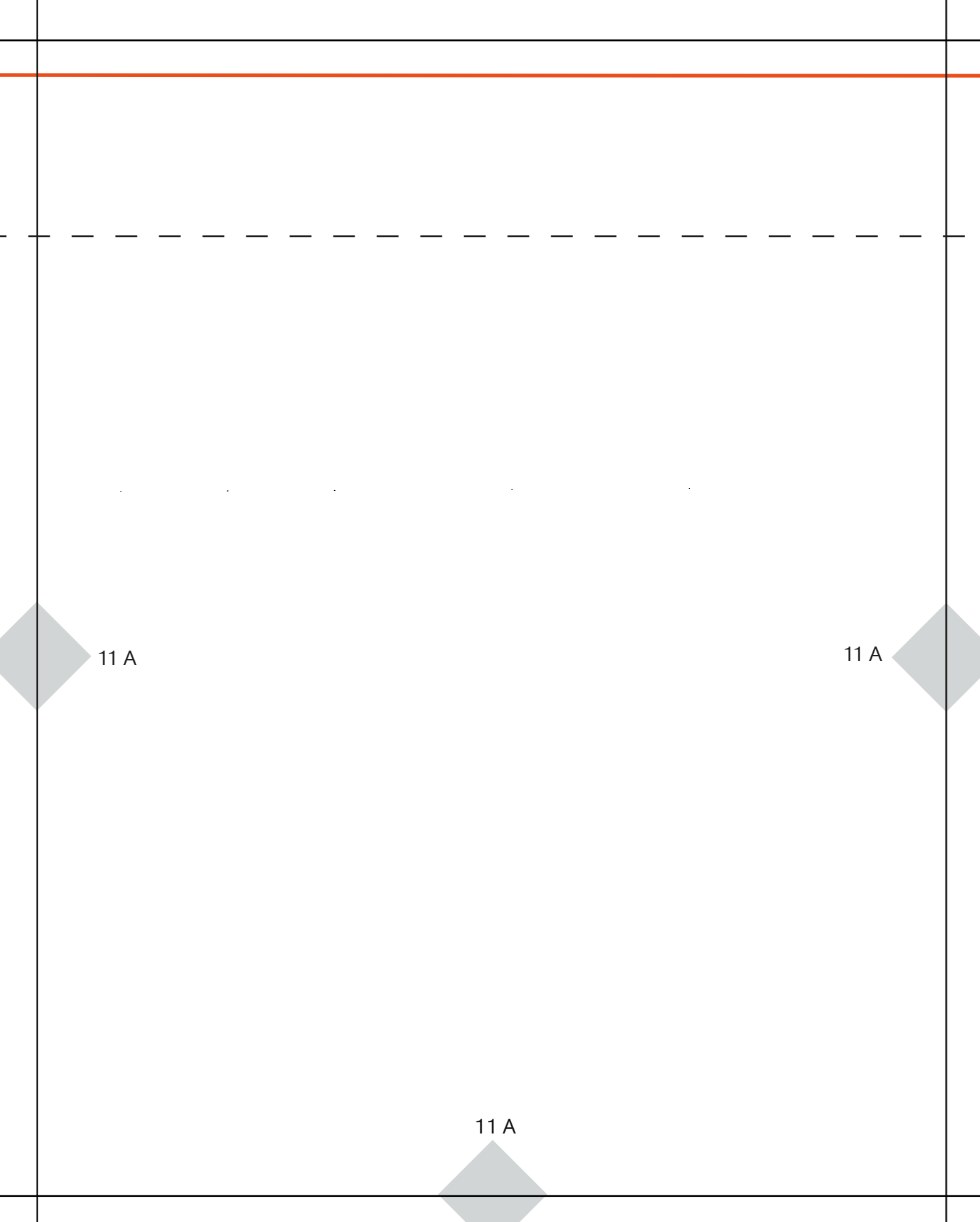
10 B



10 C

10 C

10 C



11 A

11 A

11 A

11 B

11 B

11 B

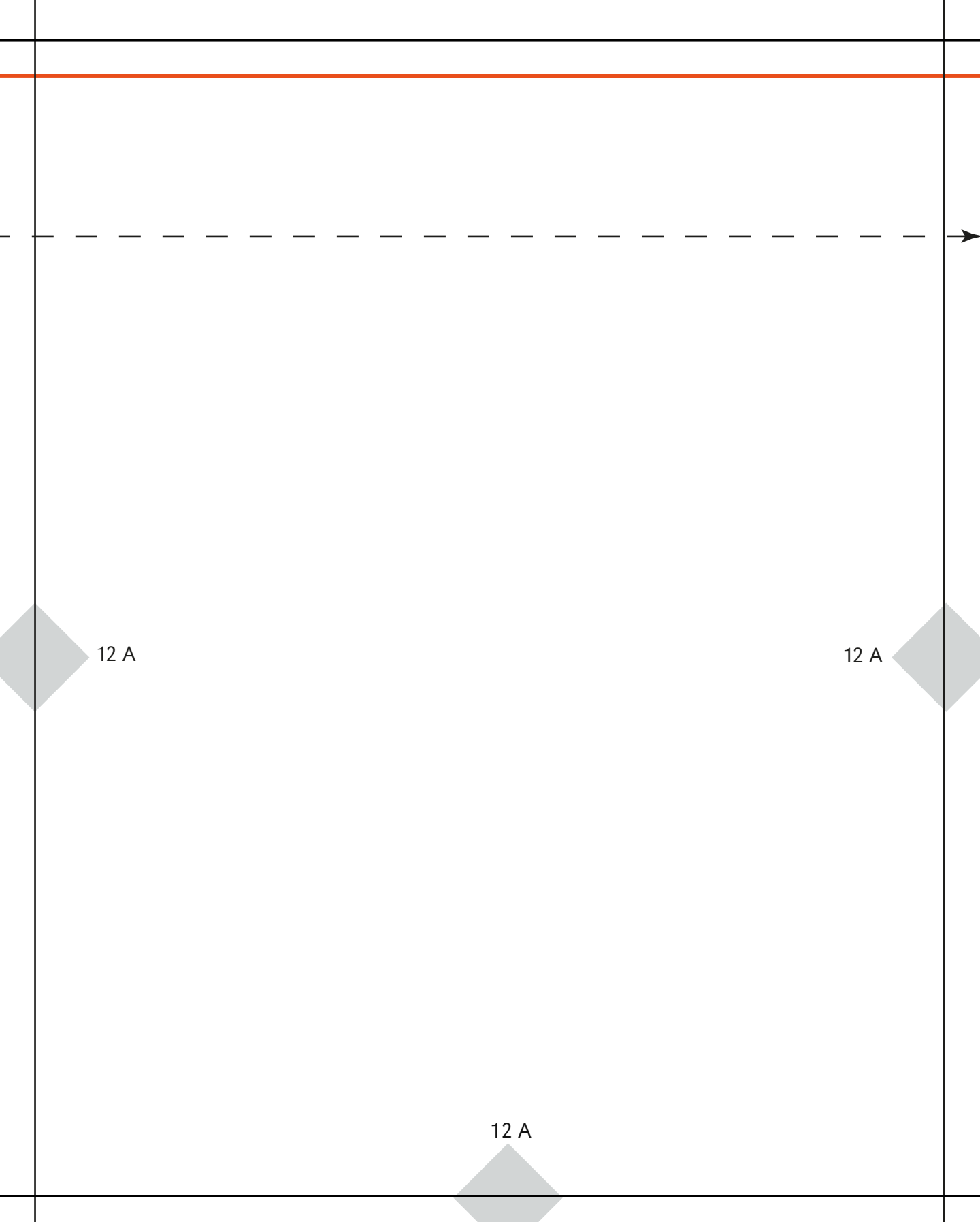
11 B



11 C

11 C

11 C



12 A

12 A

12 A



12 B

12 B

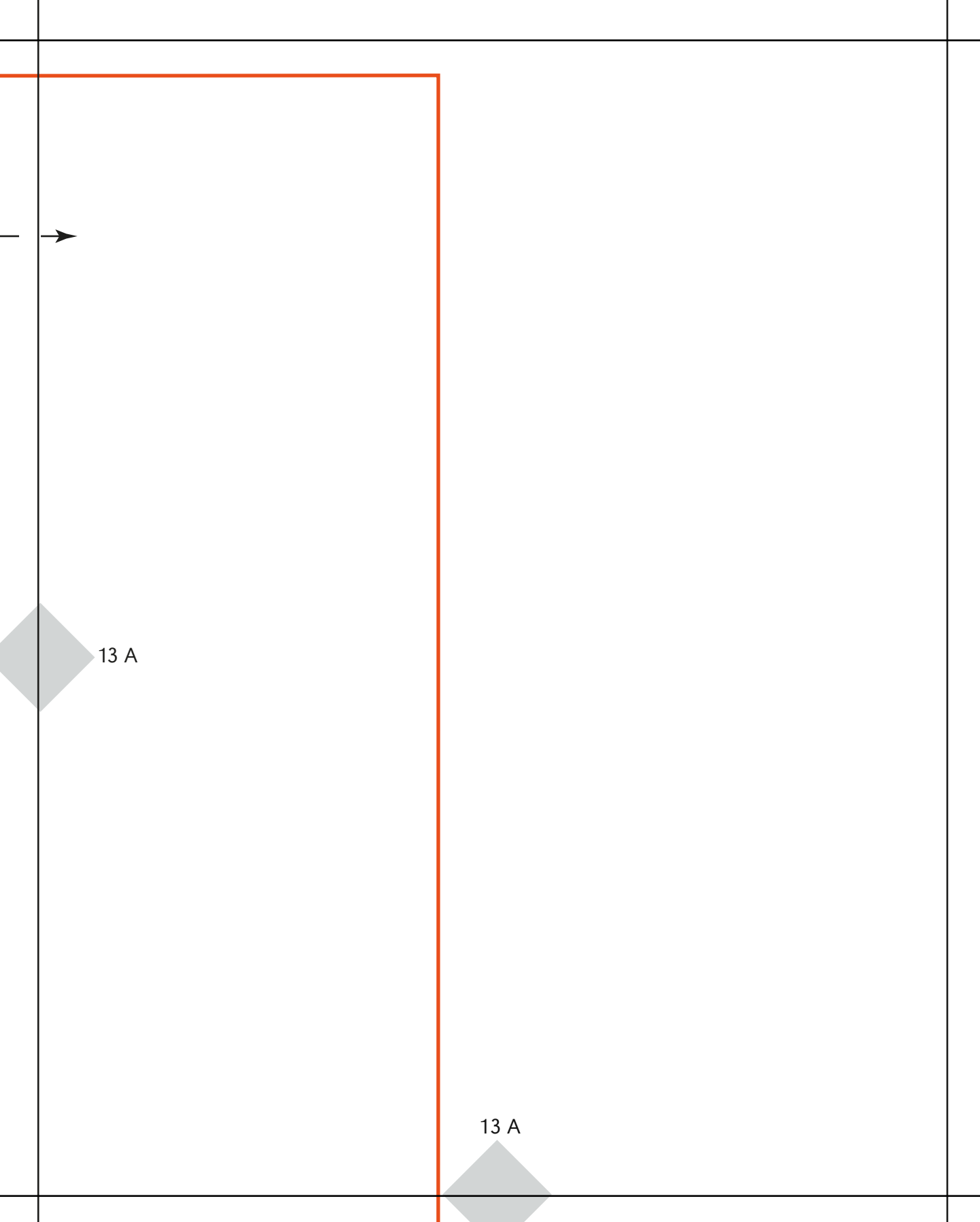
12 B

12 B

12 C

12 C

12 C



13 A

13 A



13 B

13 B

13 B

13 C

13 C

