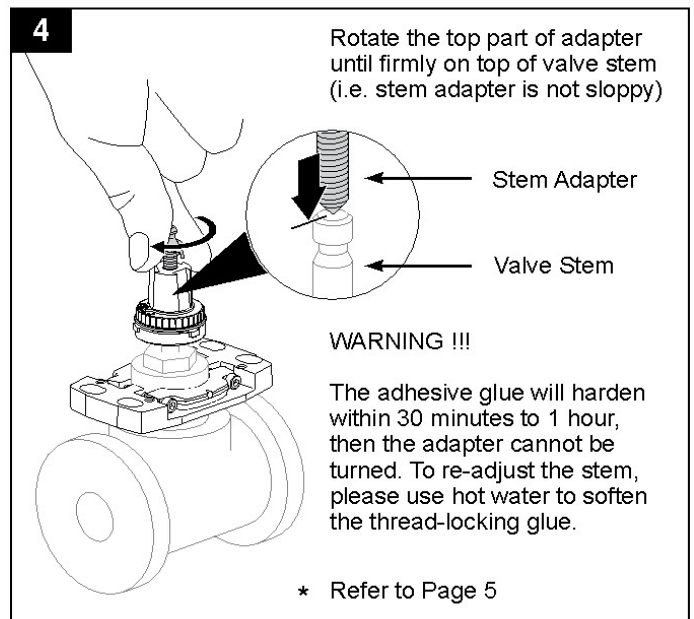
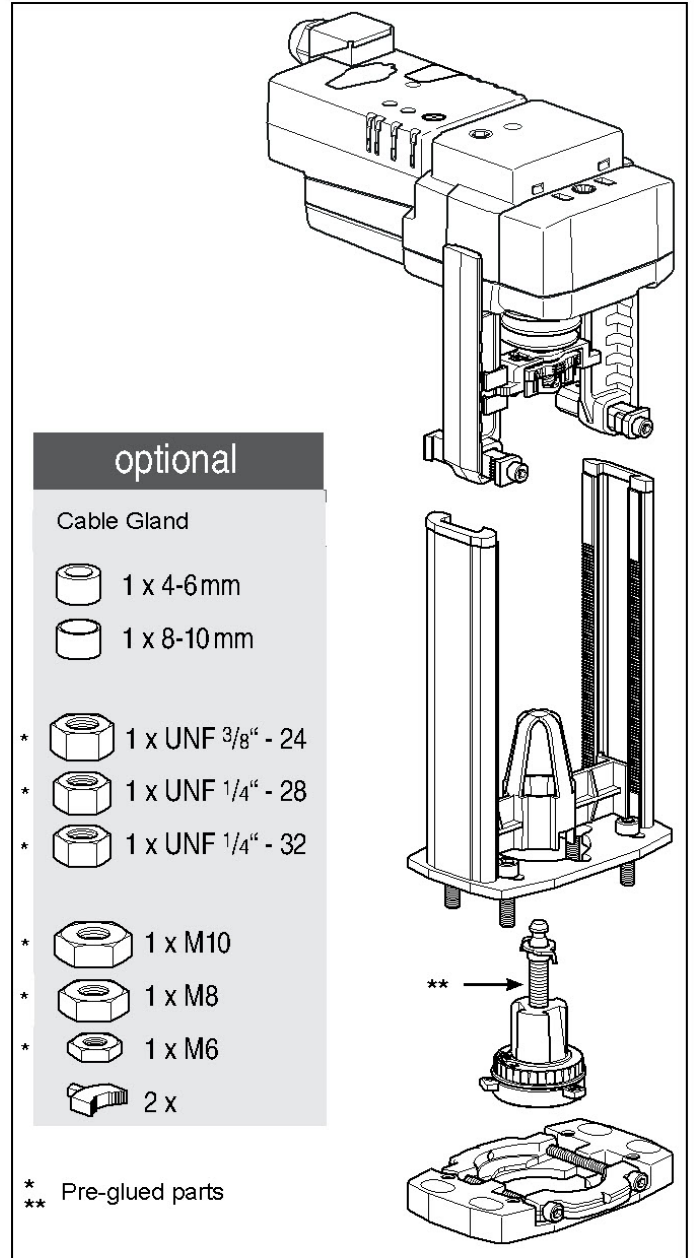
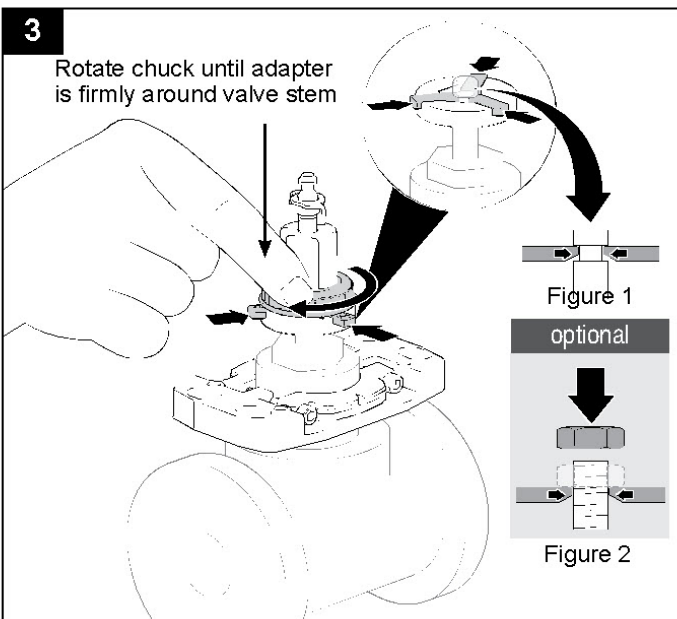
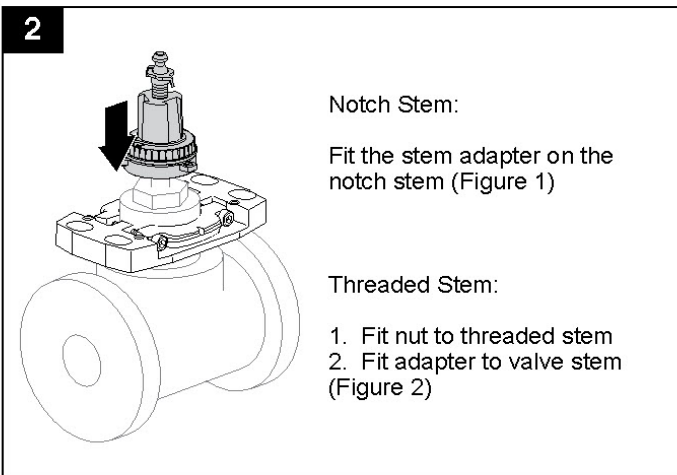
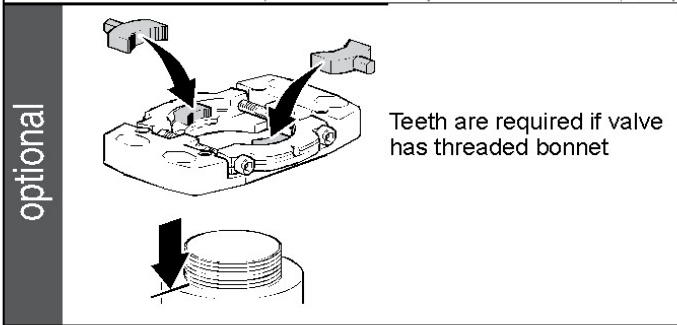
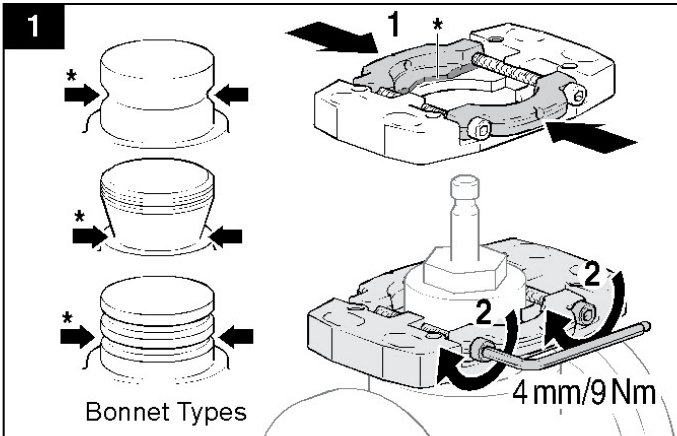
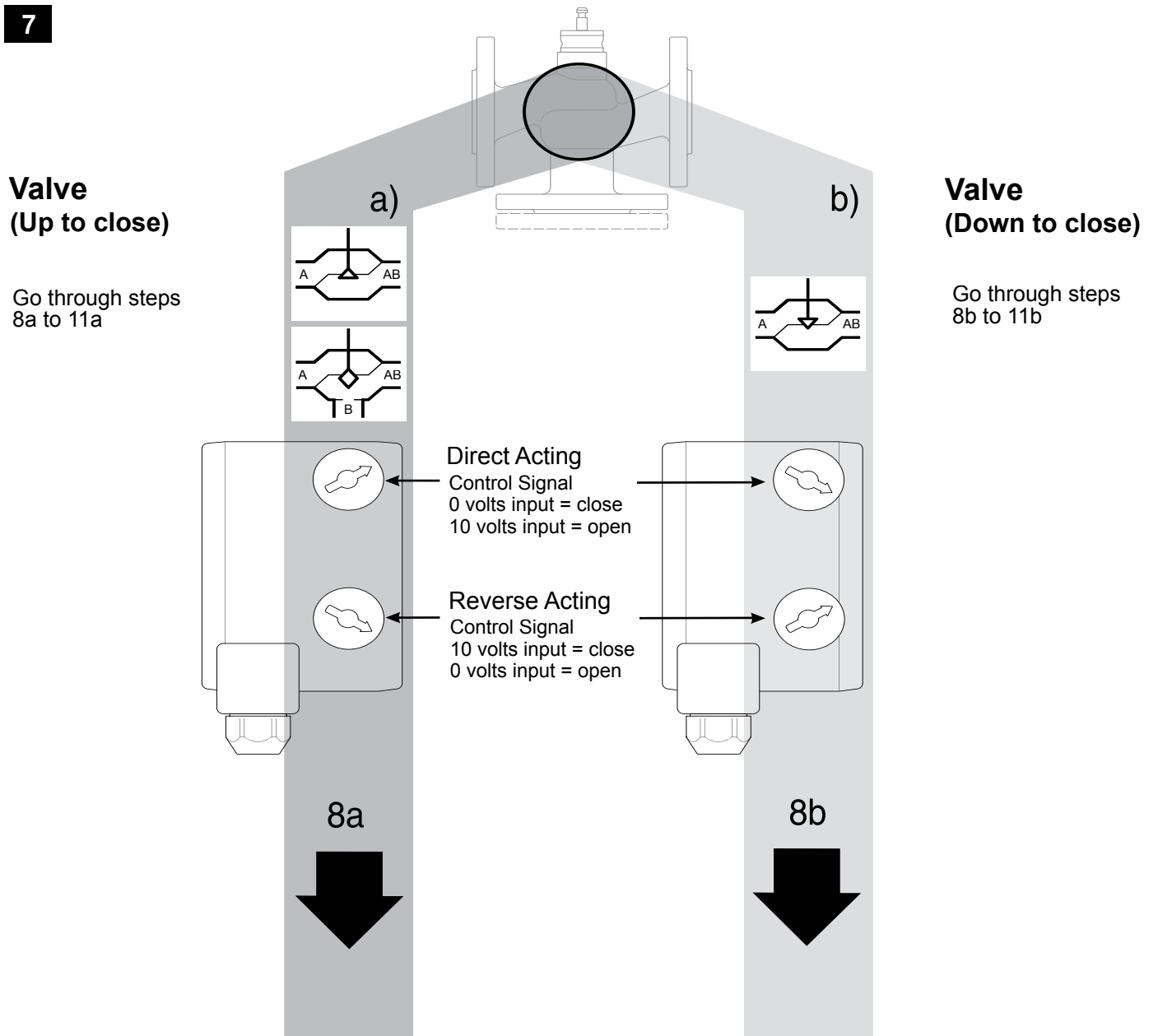
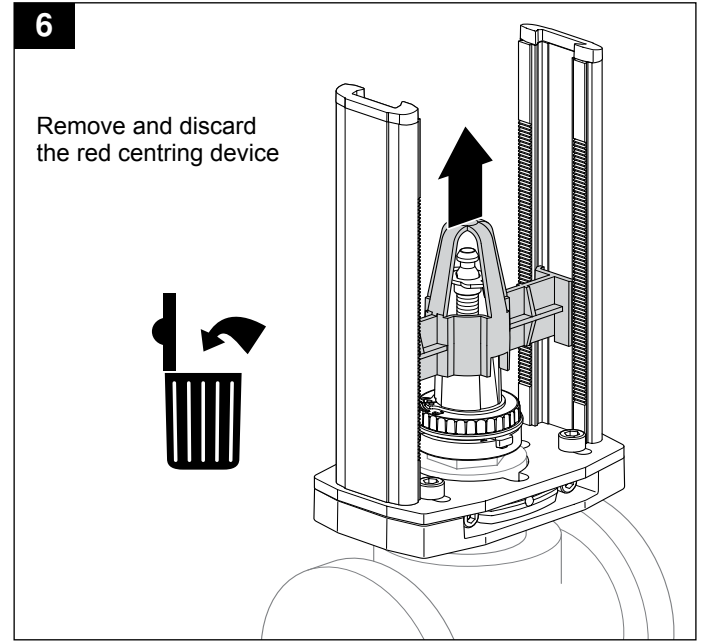
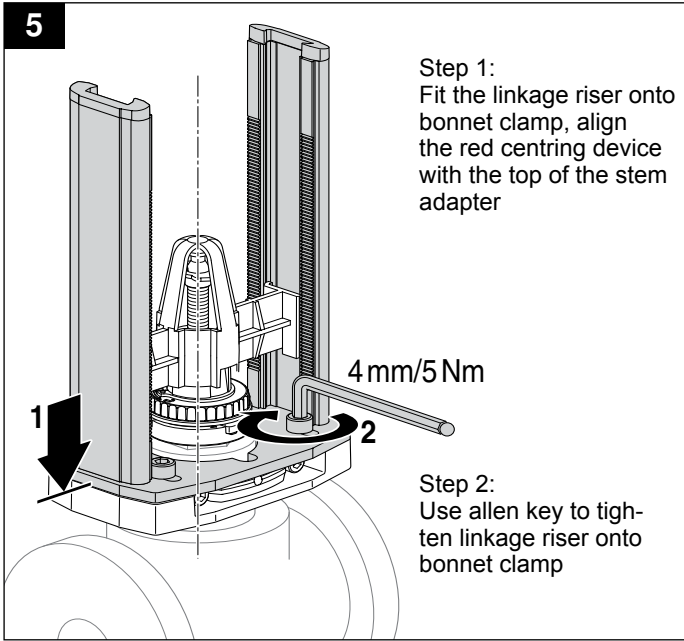
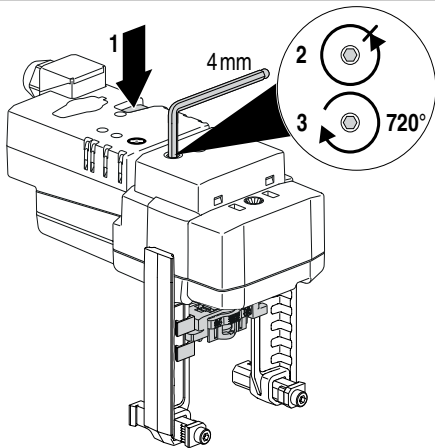


71415-00001.B



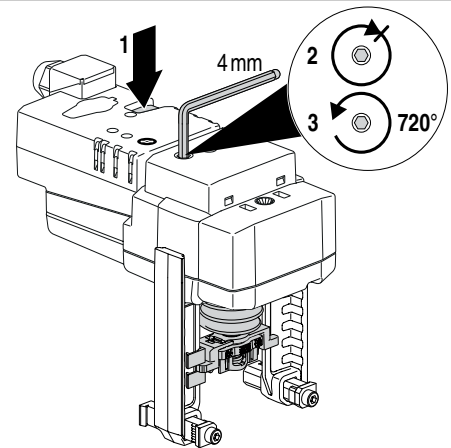


8a



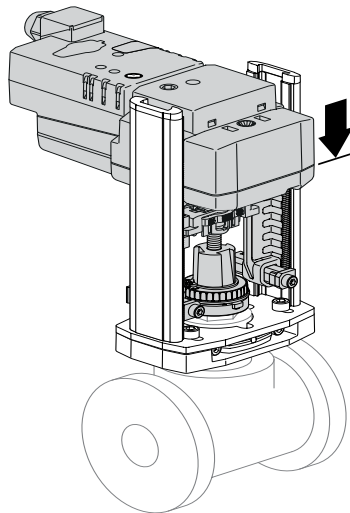
Step 1: Hold manual override button down
 Step 2: Rotate counter-clockwise until stopped
 Step 3: Rotate 2 turns (720 °) clockwise to ensure valve will have tight close off

8b



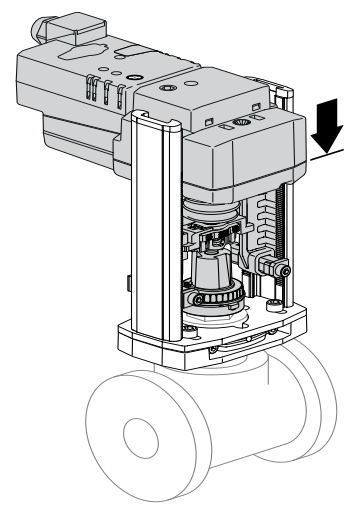
Step 1: Hold manual override button down
 Step 2: Rotate clockwise until stopped
 Step 3: Rotate 2 turns (720 °) counter-clockwise to ensure valve will have tight close off

9a



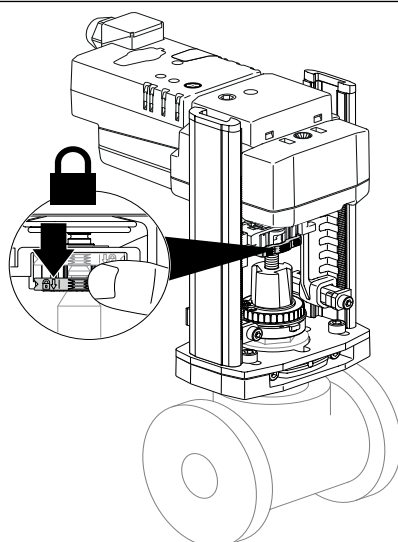
Slide the actuator down to the linkage riser until the valve stem and coupling click together

9b



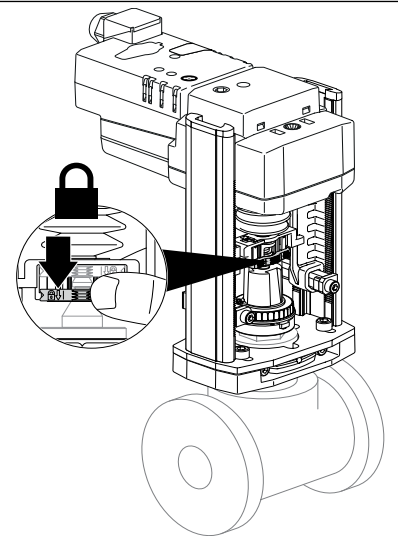
Slide the actuator down to the linkage riser until the valve stem and coupling click together

10a



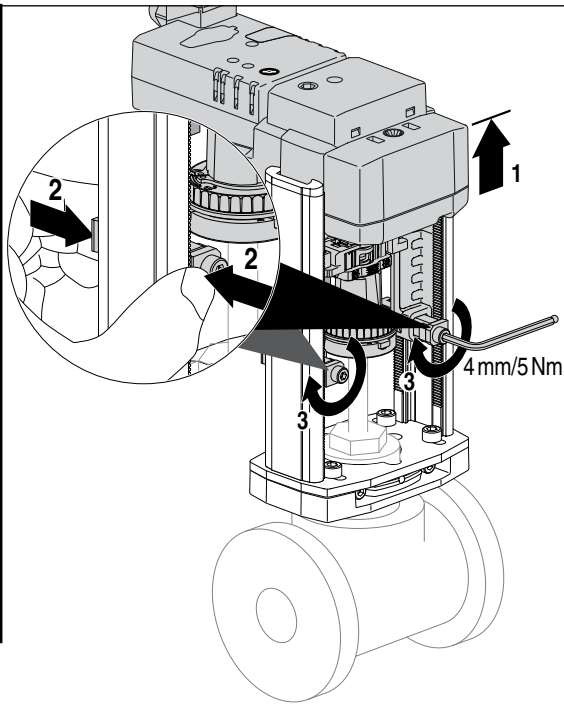
Lock the adapter into actuator stem coupling

10b



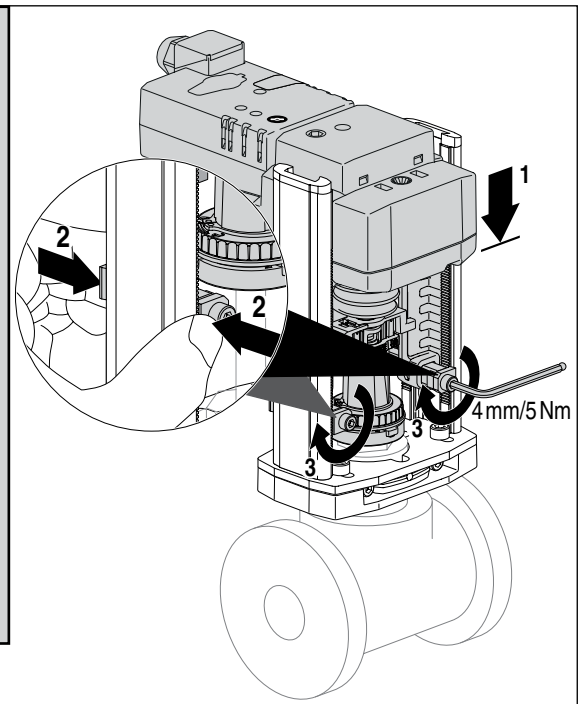
Lock the adapter into actuator stem coupling

11a

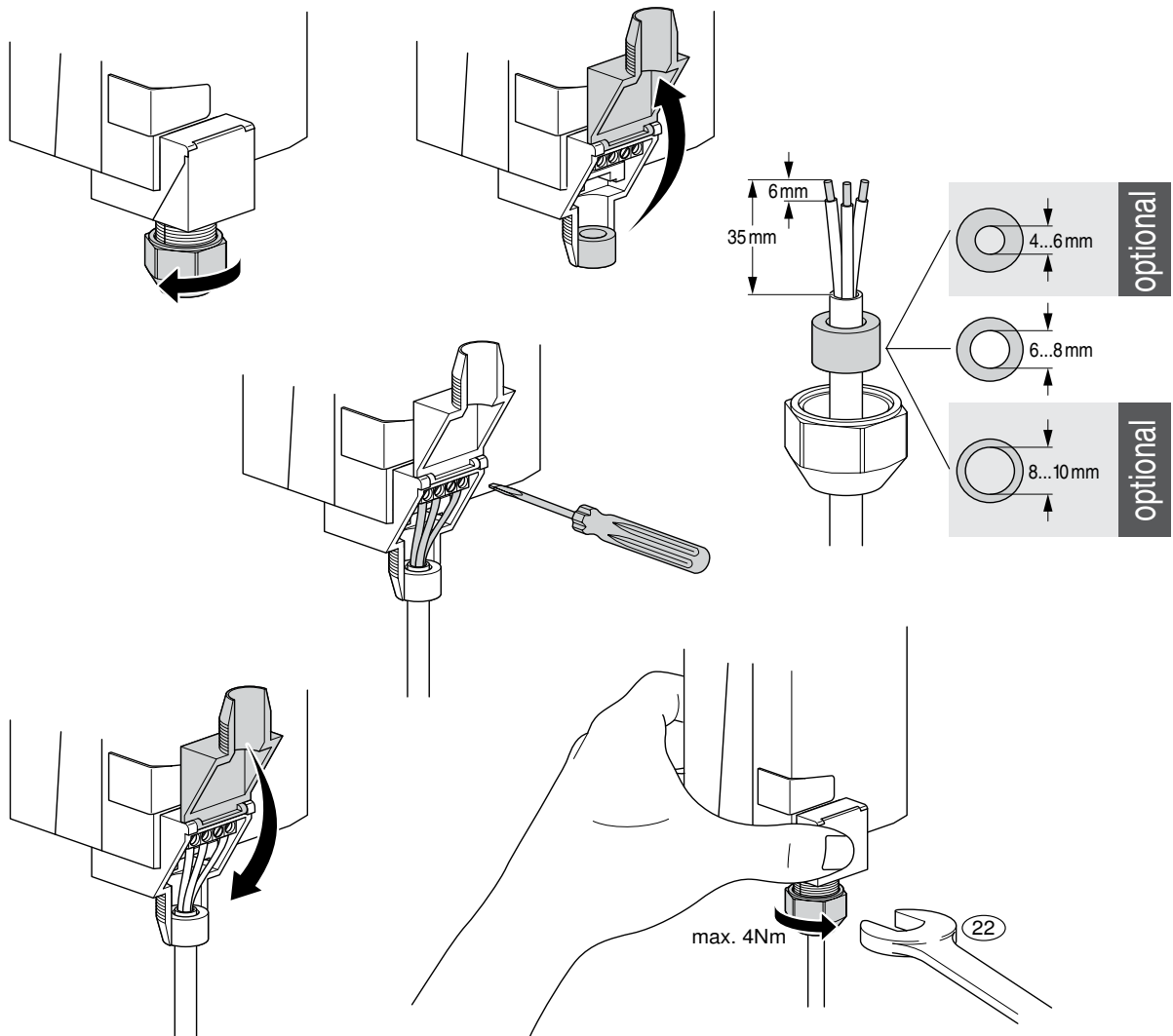


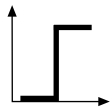
Step 1: Lift actuator to fully extend valve stem
 Step 2: Ensure slide locks are engaged with linkage riser
 Step 3: Use allen key to tighten the slide locks

11b

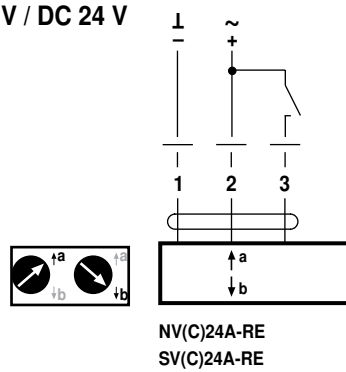


Step 1: Push down actuator to fully retract valve stem
 Step 2: Ensure slide locks are engaged with linkage riser
 Step 3: Use allen key to tighten the slide locks

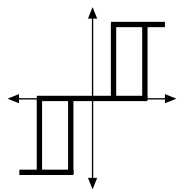
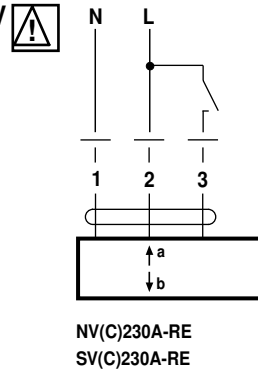




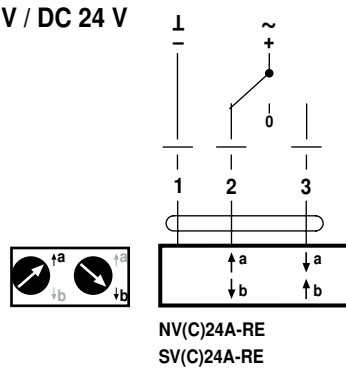
AC 24 V / DC 24 V



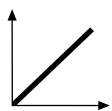
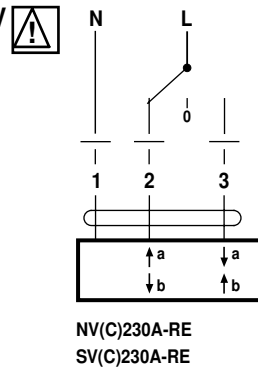
AC 230 V



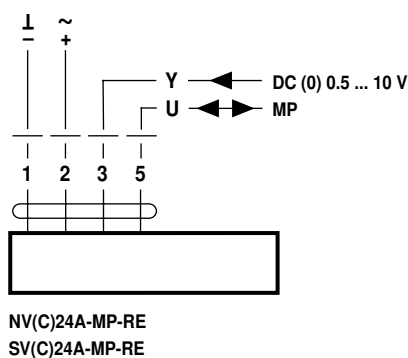
AC 24 V / DC 24 V



AC 230 V



AC 24 V / DC 24 V



* Please note:

If you need to re-assemble or re-adjust below parts, the existing adhesive glue will no longer be effective

- 1) Pre-glued nuts (* P.1)
- 2) Pre-glued adapter (**P.1)

You are required to re-apply the adhesive glue on above parts, otherwise the possibility of the linkage coming loose increases and the operation may fail in a short time period.

Standard Loctite glue may not have the required strength adhesive. Please select high strength adhesive glue which is suitable for heavy-duty, shock, vibration and high stress level.

Recommended brand: Loctite 2760 High Strength Threadlocker.