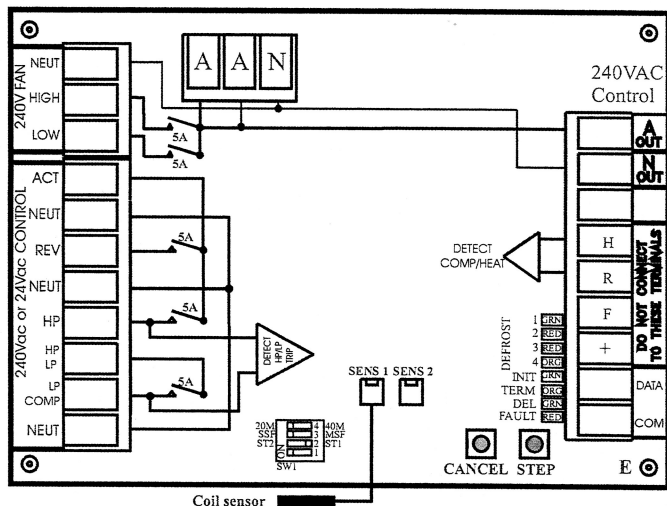


D8 CONDENSER MANAGEMENT SYSTEM



D8 LED's	Cooling Mode	Heating Mode 1	Heating Mode 2	Heating Mode 3	Heating Mode 4	Heating Mode 5
1	OFF	ON	OFF	OFF	OFF	OFF
2	OFF	OFF	ON	OFF	OFF	OFF
3	OFF	OFF	OFF	ON	OFF	OFF
4	OFF	OFF	OFF	OFF	ON	BLINKS
*INIT	OFF	OFF	ON	ON	OFF	OFF
*TERM	OFF	OFF	ON	ON	OFF	OFF
*DELAY	OFF	OFF	OFF	OFF	OFF	OFF
*FAULT	BLINKS	BLINKS	BLINKS	BLINKS	BLINKS	BLINKS

LEDs
 *INIT. Coil temp below -4oC.
 *TERM. Off when coil temp above 10oC.
 *DELAY On. Compressor cycle delay.
 *FAULT. QUICK BLINK - normal communication, See information below.

FAULT INDICATION	D8 CONDENSER MANAGEMENT LIGHTS (LEDs)					AIR CONDITIONING COMPONENTS			WALL CONTROL LIGHT
	1	INIT	TERM	DEL	FAULT	COMP.	COND. FAN	EVAP. FAN	RUN
HP/LP SAFETY TRIP	OFF	OFF	OFF	OFF	SLOW BLINK	OFF	OFF	OFF	BLINKING
FAULTY COIL SENSOR	ON	ON	ON	OFF	SLOW BLINK	ON	HIGH	ON	ON
COMMUNICATION FAULT	ON	OFF	OFF	ON	OFF	OFF	OFF	ON	ON

SERVICE BUTTONS.

CANCEL button. Press to cancel time delays. i.e 5 minute anti-cycle delay.

STEP button. Unplug SENS 1. Press and release to step through defrost cycle.

Operating Modes and Information

Cooling Call. D8 LED's off.

Low pressure control bypassed on start-up for 5 minutes.

Mode 1 Heating Call.

Compressor in minimum run time of 30 minutes or 20 minutes. Dip Switch selectable.

Mode 2. De-ice confirmation time. Minimum compressor run time complete.

Compressor must run continuously for 3 minutes at or below -4.0oC to initiate deice mode.

Mode 3. De-ice cycle.

Reversing valve, outdoor fan and indoor fan de-energized. Compressor stays on.

Deice cycle complete when outdoor coil temperature reaches 10oC or 10 minutes has elapsed.

Note 1. Indoor fan will continue to run if selected in continuous mode on Wall Control.

Note 2. Run LED will flash on Wall Control in de-ice cycle.

Mode 4. De-water cycle.

On completion of deice cycle, outdoor fan runs for 30 seconds to remove residual water from coil.

Mode 5. Pre-heat cycle.

Reversing valve and outdoor fan energized. Indoor fan held off for 15-65 seconds, dependent on duration of deice cycle i.e 0-10 minutes.

System returns to normal operation.

Compressor Operating Information

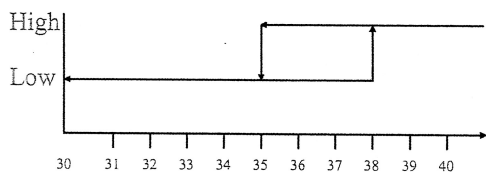
3 minute anti-cycle delay.

Random start delay, 20 to 50 seconds on initiation of power.

Outdoor Fan Operating Information

Single or two speed control. Dip Switch selectable.

Outdoor Fan Speed Control in cooling cycle.



Outdoor Fan Speed Control in heating cycle.

