



ARMORLITE

INSTALLATION INSTRUCTIONS

2018-2023 Jeep Wrangler JLU 4door
2024+ Jeep Wrangler JLU 4door

Cargo Kit



GoArmorlite.com

If you have trouble at any point refer to our website support section, full install videos, and tip and tricks are available.

GoArmorlite.com

If you continue having trouble, email us at orders@goarmorlite.com

SUGGESTED TOOLS

Gloves
T40 torx
Plastic trim tools
Optional trim pliers



Before we start:

- 2024+ models, please note that some images may not look the same as your product but the installation remains the same.
- Remove your Armorlite from the box and bring it to a warm place and let it relax. You would get weird too if you were folded up in a box.
- Make sure your vehicle is in a stable environment with the parking brake engaged.
- This floor system is year and model specific, do not install in any other vehicle.
- We do not guarantee this floor will fit with any aftermarket product or modification, we do guarantee it will fit your vehicle in a stock situation.
- Armorlite replaces your carpet, do not install it over the top of your existing flooring.
- Do not use floor mats on top of your Armorlite floor. You don't need them, and they are a hazard.
- Make sure your floor is installed correctly before driving. Double check that the pedals are not obstructed before driving.
- Cutting the floor in areas not designated for cutting will void your warranty, if you are having fit issues, email us, including some clear pictures that have context of where your issue is will help us help you. orders@goarmorlite.com

Grommets:

Many parts in this kit use a grommet to secure the floor to the factory pegs on the body. Anywhere you see the round hole in the part you should be installing a grommet.

There are 2 methods for using the grommets.

Method 1: Install the grommet on the part before installing in the vehicle. Take the “A” or “front side” which is the smooth finished part, and sandwich the floor between it and the “B” side or “back side.” **(NOTE: grommets do not unlock once connected.)**

Position Armorlite in between grommets



Press them together firmly until they lock into each other

Position back side grommet on insulator side of Armorlite



Part ready to install

Place front side of grommet on top of Armorlite

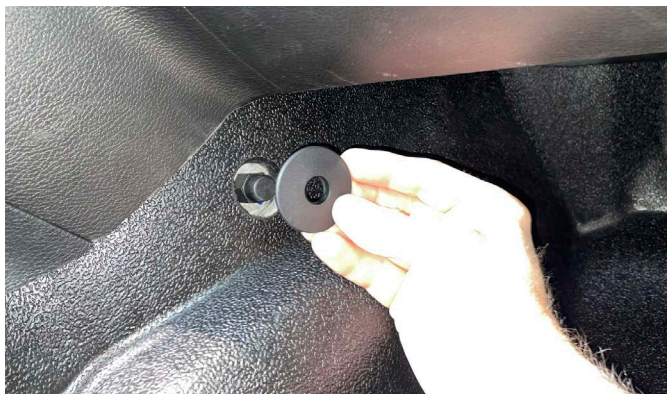


To install press opening over peg to click into position

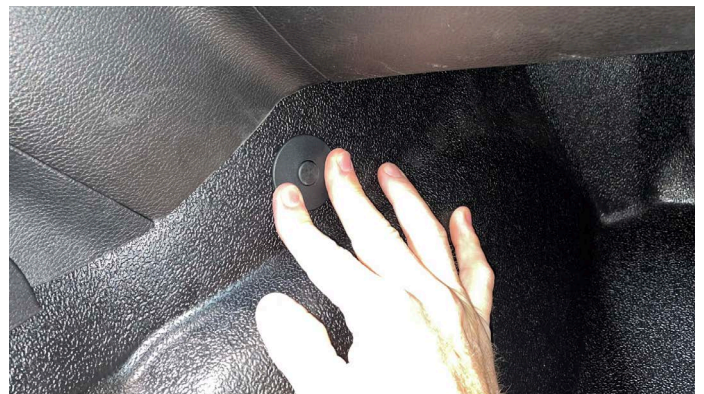


Method 2: Using only the Top side is acceptable.

Take the Top side and position over peg



Press top side of grommet over peg until connected.



Cargo - Wheelhouse Install

1. To install the wheelhouse covers it is necessary to remove the cargo tie down / load floor panels.

Start by opening the covers on the D-Ring tie downs, then remove the T40 torx bolt, repeat on all 6 tie downs and remove panels.

If your vehicle has the Mopar Trail Rail system, unbolt and remove.



2. Remove carpeted wheelhouse covers.



3. Pull out the plastic panels at the back of the cargo area. You will only need to get 1 click out on the bottom area to feed in the wheelhouse covers. No need to fully remove.



4. Using a trim tool start to work in the wheelhouse under the plastic. Make sure to start working the wheelhouse towards the rear of the vehicle.



To ensure proper fit make sure the wheelhouse is tucked under the plastic and back far enough towards the rear of the vehicle.



Example of subwoofer models. Installation is generally the same but the passenger wheelhouse is shorter to accommodate subwoofer and trim.



5. Tuck the front of the wheelhouse cover behind the plastic trim next to the door latch striker. Then work the rest of the wheelhouse edge into place.



6. Push the rear plastic trim back into place once wheelhouse is properly installed.



7. Re-Install the side load floor / tie down panels.

Before tightening make sure wheelhouse is pushed all the way outward against wheelhouse as the arrows illustrate in the picture. Failure to do so can result in the cargo mat not fitting properly.



Cargo - Closeout Install

8. IMPORTANT For the cargo mat and closeout panel it is important to first identify if you have a cloth model with NO gap hiding flipper, or if you have a factory leather model WITH the gap hiding flipper.

Example of a Cloth model with no gap hiding flipper.



Example of a Leather model with gap hiding flipper, highlighted in photo.
For this model skip to step 9b.



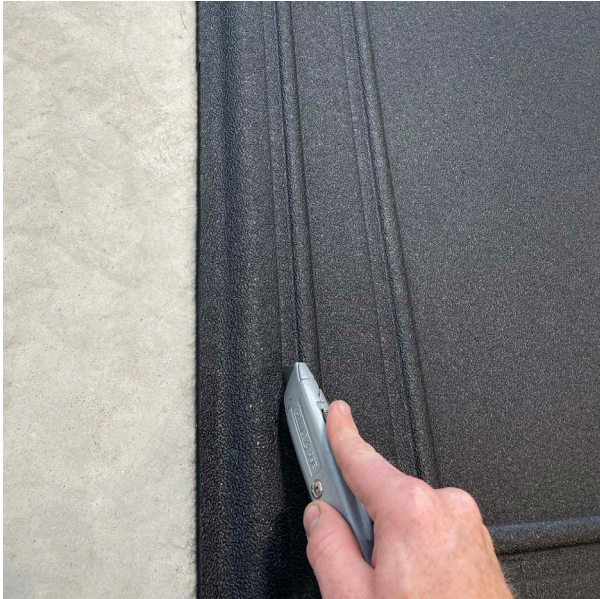
Cloth model, with no gap hiding flipper:

9a. With the back seat laid down, install the closeout panel down behind the seat. This part overlaps with the rear floor under the seat and the cargo mat overlaps back of closeout panel. Use the included grommets to attach to pegs under seat on waterfall.



Leather model with gap filler ONLY

9b. The closeout panel and cargo mat have scribe lines which are shown here highlighted in red. Cut along these lines and discard the orange highlighted parts.



To make these cuts be sure to use a quality fresh razor knife.

Make multiple shallow cuts. The first pass should be straight on the line through the rubber side, it will act as a guide for the following passes. Once partially through you can fold on the line to make remaining cuts easier, or use scissors at this point to finish cutting.



9b continued. With the backseat down, lift the gap hiding flipper, then feed in the two pieces of the closeout.

Once pushed down tuck the backside of it under the flapper flange.



Closeout panel should overlap onto the rear floor, be sure to secure using the grommets provided.



Cargo - Cargo Mat Install

10. Install cargo mat, which should overlap everything and remain on top. The cargo mat is not intended to replace the load floor. It will lift up with the original load floor as shown below.



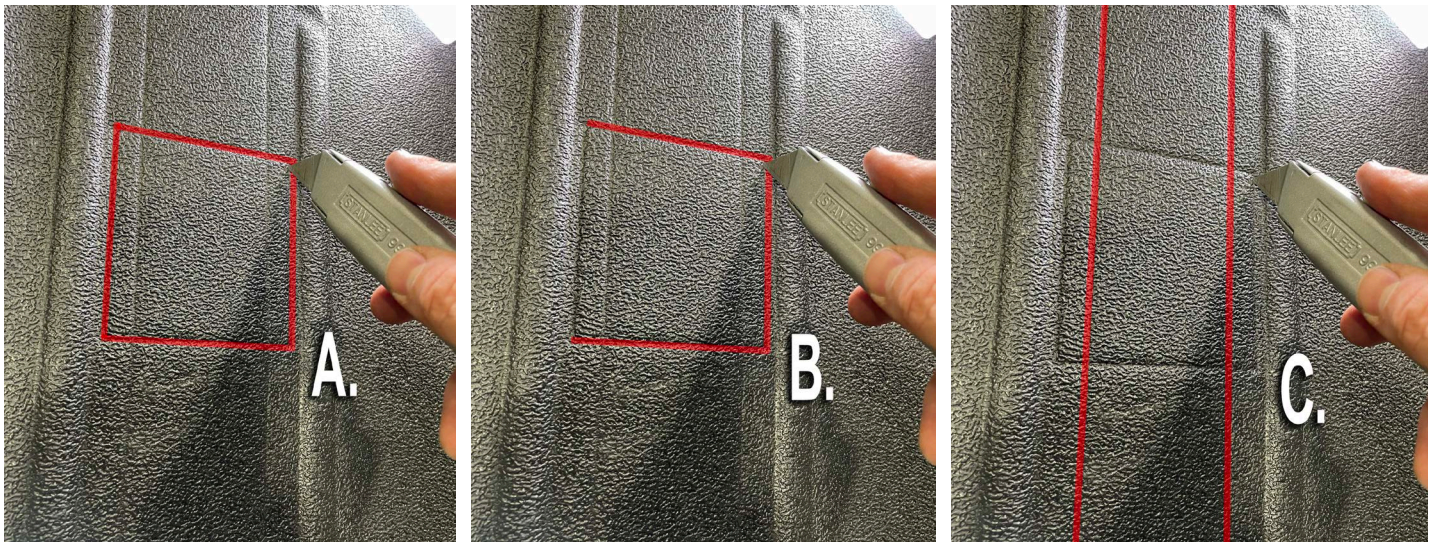
11. Cargo mat tie down cut outs.

Optional: if you wish to have access to the factory tie down rings, you can cut the Armorlite cargo mat in the scribed sections.

A. Cut the optional square completely and remove

B. Another option is to cut three sides to allow access to tie down rings but then cover when not in use.

C. If equipped with a Mopar Trail Rail system, cut the lines for the long rectangle that allows access to rail system.



Cut these lines for Mopar trail rail system



Cut these lines for standard cargo tie downs

Cleaning and care:

In most cases water and a brush is all that is needed to clean your floor. Be sure to open your plugs before spraying the floor down with water.

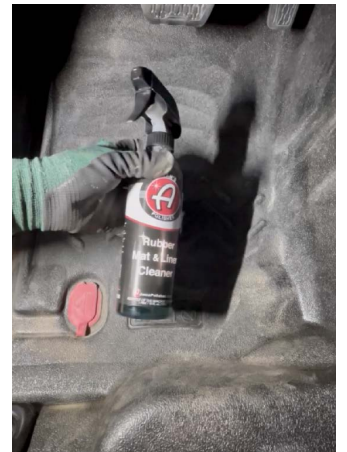
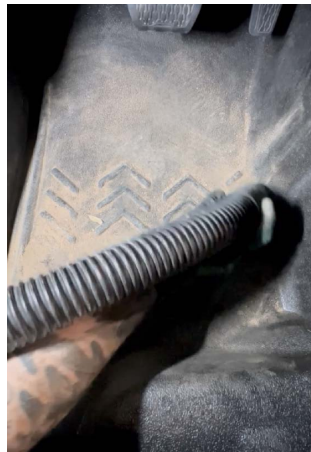
Break up any mud then rinse down the drain.



Another method is to break up any mud with a brush vacuum clean. Afterwards, you can mist with water and wipe with a towel.

If your floor continues to look dusty or gray, use Adam's rubber floor cleaner, which is available at GoArmorlite.com.

Lightly mist the floor with a small amount of floor cleaner, and wipe down with a towel.



DO NOT use an excess amount of soap as it can make the floor slick.

Do NOT use any silicone-based products, or products that add shine, these can make the floor slick.

Keeping your floor clean will prolong the life of your Armorlite floor system.

We warranty the Armorlite floor system against normal off road and every day use wear and tear when properly maintained.