



ARMORLITE

INSTALLATION INSTRUCTIONS

2018-2023 Jeep Wrangler JLU 4door
2024+ Jeep Wrangler JLU 4door

Full Vehicle Kit



GoArmorlite.com

If you have trouble at any point refer to our website support section, full install videos, and tip and tricks are available.

GoArmorlite.com

If you continue having trouble, email us at orders@goarmorlite.com

SUGGESTED TOOLS

Gloves
Small flathead screwdriver
10mm socket
16mm socket or wrench
T50 torx
T40 torx
Plastic trim tools
Optional trim pliers



Before we start:

- 2024+ models, please note that some images may not look the same as your product but the installation remains the same.
- Remove your Armorlite from the box and bring it to a warm place and let it relax. You would get weird too if you were folded up in a box.
- Make sure your vehicle is in a stable environment with the parking brake engaged.
- This floor system is year and model specific, do not install in any other vehicle.
- We do not guarantee this floor will fit with any aftermarket product or modification, we do guarantee it will fit your vehicle in a stock situation.
- Armorlite replaces your carpet, do not install it over the top of your existing flooring.
- Do not use floor mats on top of your Armorlite floor. You don't need them, and they are a hazard.
- Make sure your floor is installed correctly before driving. Double check that the pedals are not obstructed before driving.
- Cutting the floor in areas not designated for cutting will void your warranty, if you are having fit issues, email us, including some clear pictures that have context of where your issue is will help us help you. orders@goarmorlite.com

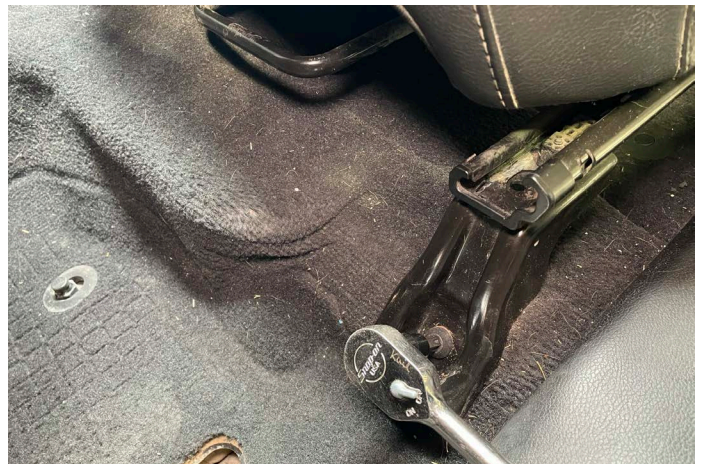
1. Disconnect the negative terminal on your battery.
2. Remove floor mats.

3. If not removing seat be sure to protect the plastic trim on outside of seat, once interior trim is removed, movement of the seat can easily result in scratches on plastic seat side cover. Durable tape or pieces of cardboard work well.



4. Unbolt the seats using a Torx bit T50

Removal of the seats is optional, one can simply tilt them backwards to install front floor, and tilt seats forward to install rear floor section. Keeping seats in prevents need to remove wire harness connections. *Images shown with seats removed for clearer photos.*



Should you choose to remove your seats, follow the factory repair manual procedure. Your seats are equipped with air bags.

Installer accepts all responsibility for damage / injury / even DEATH!

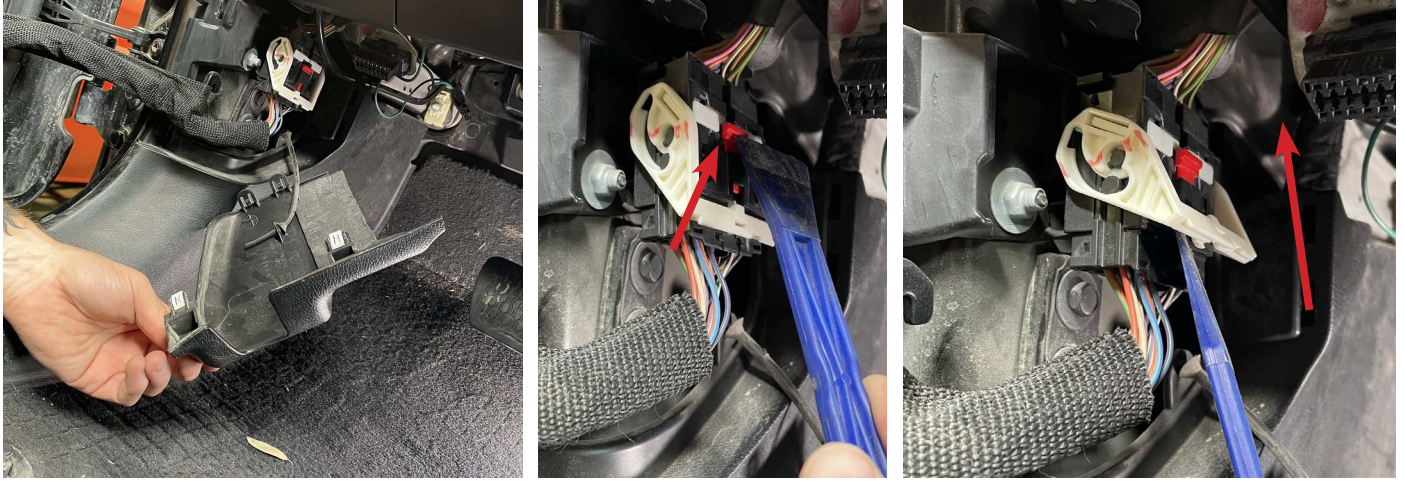


Once unbolted, working with the seat in the vehicle is easy.

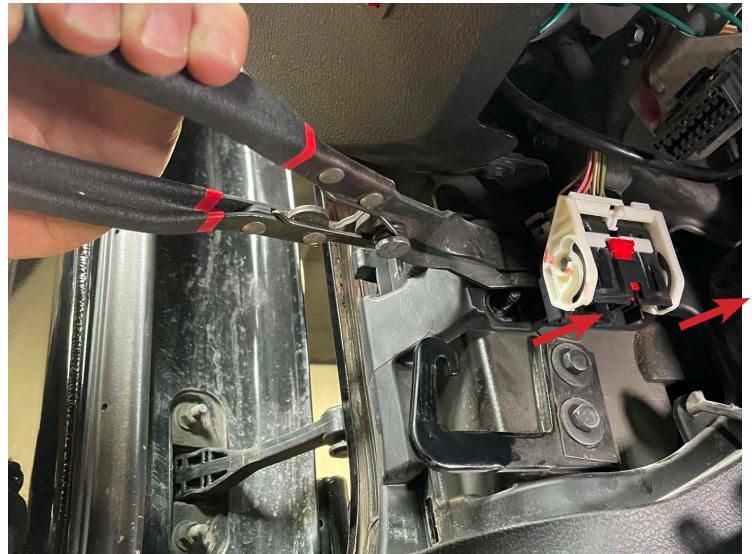
Tilt it back to do the front floors.

Tilt it forward to do the rear.

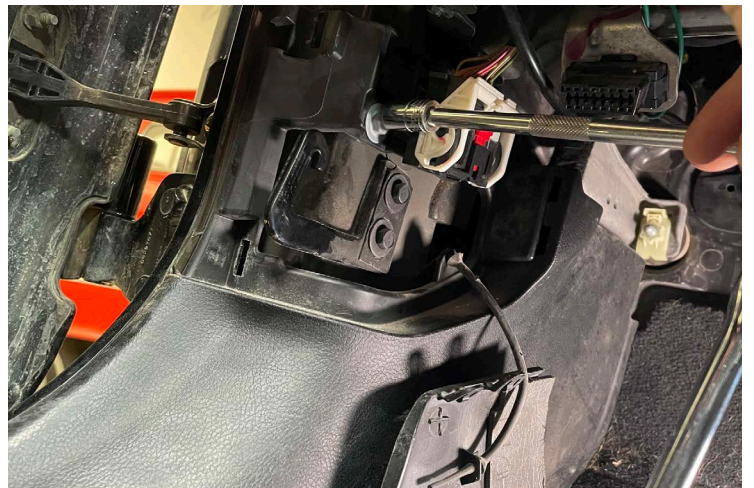
5. Take off door harness cover, find door electrical connector, slide the red tab up, then rotate the white lever from the 6 o'clock position fully to the 12 o'clock position. Detach door tether from the hook. Repeat on other side.



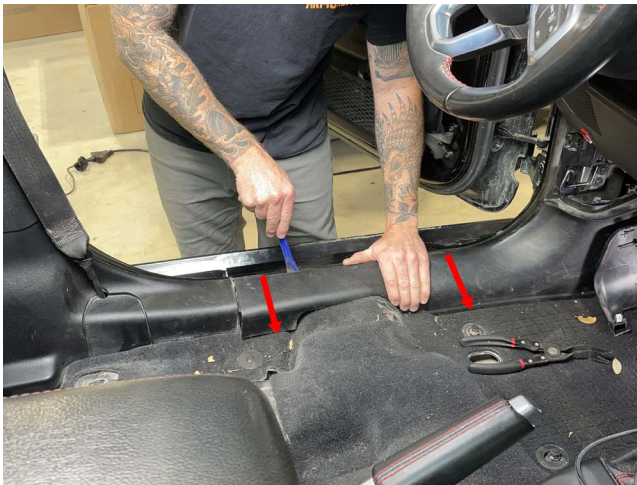
6. Using trim pliers or a trim tool pry the harness plug separating it from the body. Repeat on other side.



7. Remove the 10mm sheet metal nut next to the harness. Repeat on other side.



8. Using a trim tool pry the door sill trim inwards towards the middle of the vehicle. Try to identify where the clips are and pry closest to the clip. Once you have popped the trim off, flip it over and look at it to be sure no clips are broken or that the clips did not stay stuck on the vehicle. The larger rectangle clips are notorious for coming off and staying on the stud.



9. Remove B pillar / rear door trim

a. Remove seat belt cover.

b. Using pry tool remove top section of B pillar trim.

c. Prying towards center of vehicle, pop loose rear door sill trim and remove

Note: Check back side of trim for broken or missing clips.



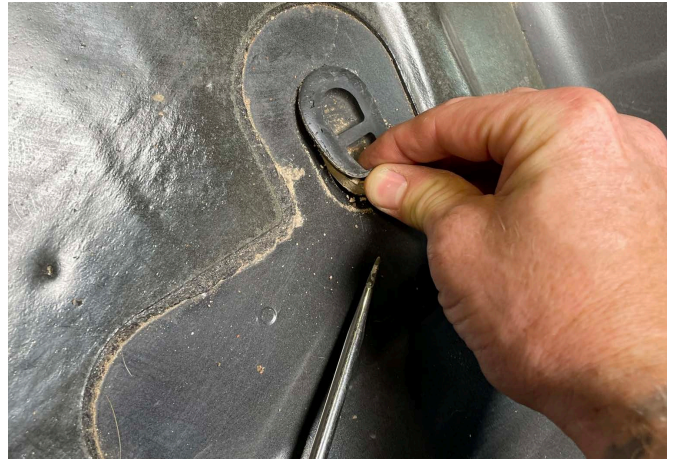
10. Unbolt the center console. There are 4 bolts, one on each side in the front and also the rear. Using a small flathead screwdriver or some other small pry tool remove the bolt covers. Using a 10mm socket remove the bolts. Lift up on the console but do not fully remove it.



11. Remove the factory carpet
clean out all of the french fry droppings.



12. Remove the 4 factory drain plugs, refer to the Armorlite floor for the locations. Do not remove the plugs not utilized by the floor system.



13. Remove the black plastic pegs that locate the front and rear factory mats using a 16mm socket.

There are 6 total that need removal: 2 on each front floorboard and 2 in the rear.

Leave the metal studs behind. The Armorlite floor is designed for them to stay in place, trust us it is A-OK.



HEY!!!! Not removing these plastic pegs will cause your drain plug openings to not align with the sheet metal, making install of drain plugs more difficult!

14. Cont. Identify the rear black pegs circled in red, remove them.

Rear drain plug locations marked in blue.

NOTE: If adding sound deadening: Armorlite has a Polyester fiber insulation, which acts as a good sound absorber, should you choose to add an additional sound deadener product (like butyl) be sure to not add it within 1 inch of a drain plug, also stop 1-2" short of the door trim and console to ensure proper fit of trim. Use sparingly, it is not necessary to "wallpaper" panels to achieve the effect. Visit our Armorlite acoustic page for more information. <https://goarmorlite.com>



15. Before installing your flooring, check the receiving side of your clips to make sure they are not damaged or obstructed.

One common occurrence is this cable shown below gets caught in the clip. Be sure to route it above, this will prevent damage to the cable during installation of trim, also making sure your clips are not obstructed which could prevent the trim from fitting as it should.



Grommets:

Many parts in this kit use a grommet to secure the floor to the factory pegs on the body. Anywhere you see the round hole in the part you should be installing a grommet.

There are 2 methods for using the grommets.

Method 1: Install the grommet on the part before installing in the vehicle. Take the “A” or “front side” which is the smooth finished part, and sandwich the floor between it and the “B” side or “back side.” *(NOTE: grommets do not unlock once connected.)*

Position Armorlite in between grommets



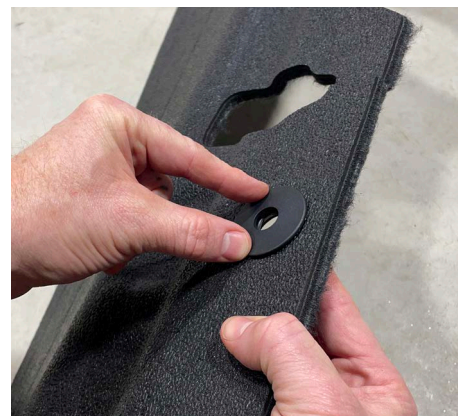
Press them together firmly until they lock into each other

Position back side grommet on insulator side of Armorlite

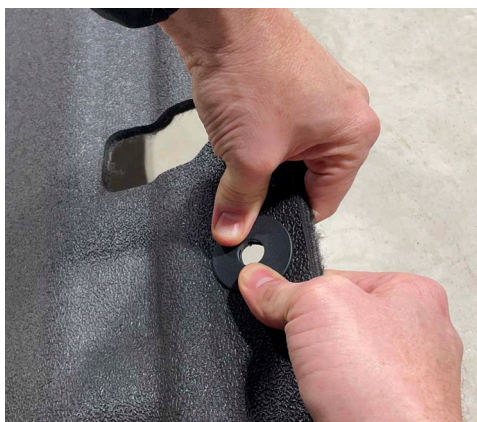


Part ready to install

Place front side of grommet on top of Armorlite

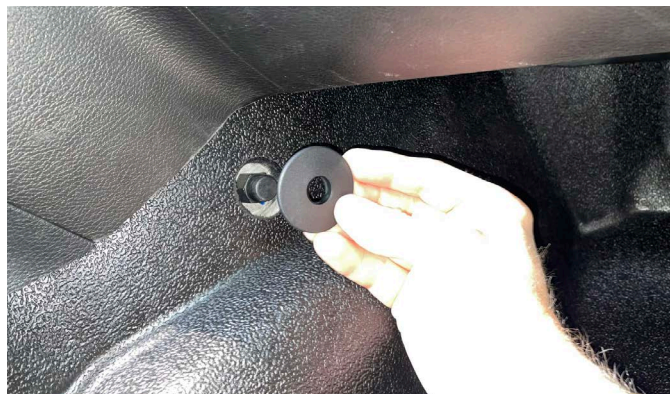


To install press opening over peg to click into position

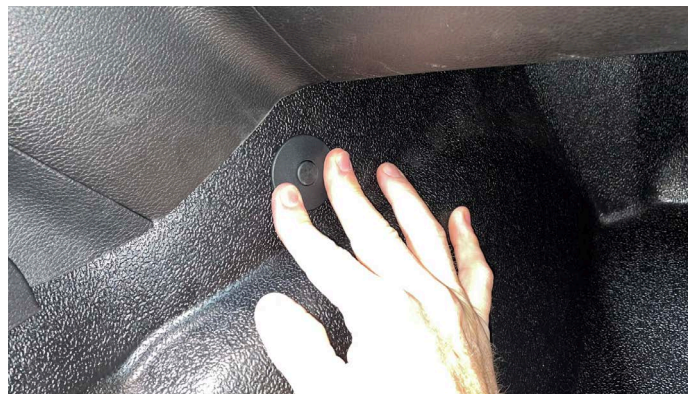


Method 2: Using only the Top side is acceptable.

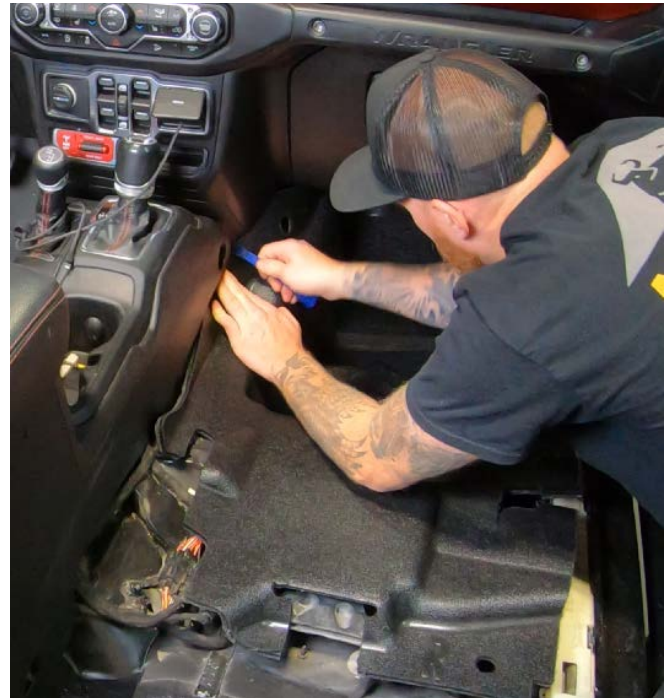
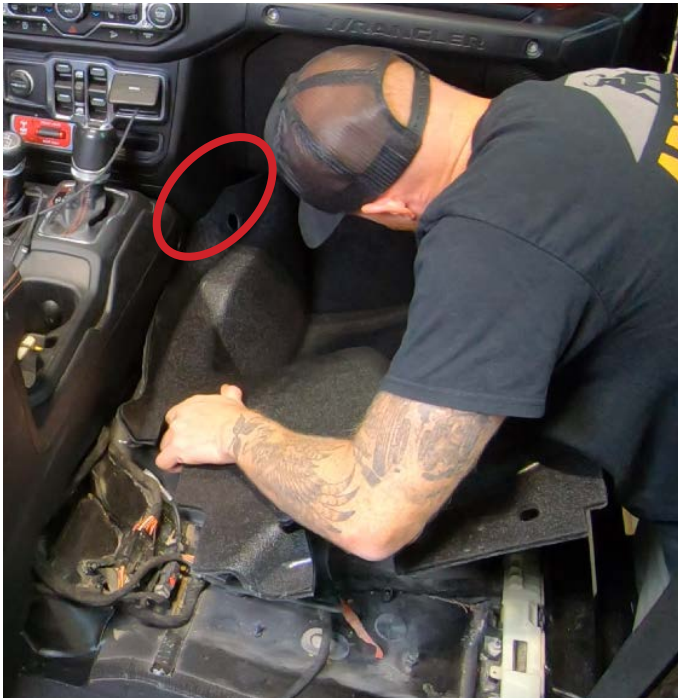
Take the Top side and position over peg



Press top side of grommet over peg until connected.



16. Install the front floors, starting with guiding the section under the center part of the dash first, keeping the outside edge (door side) lifted up. Marked in image.

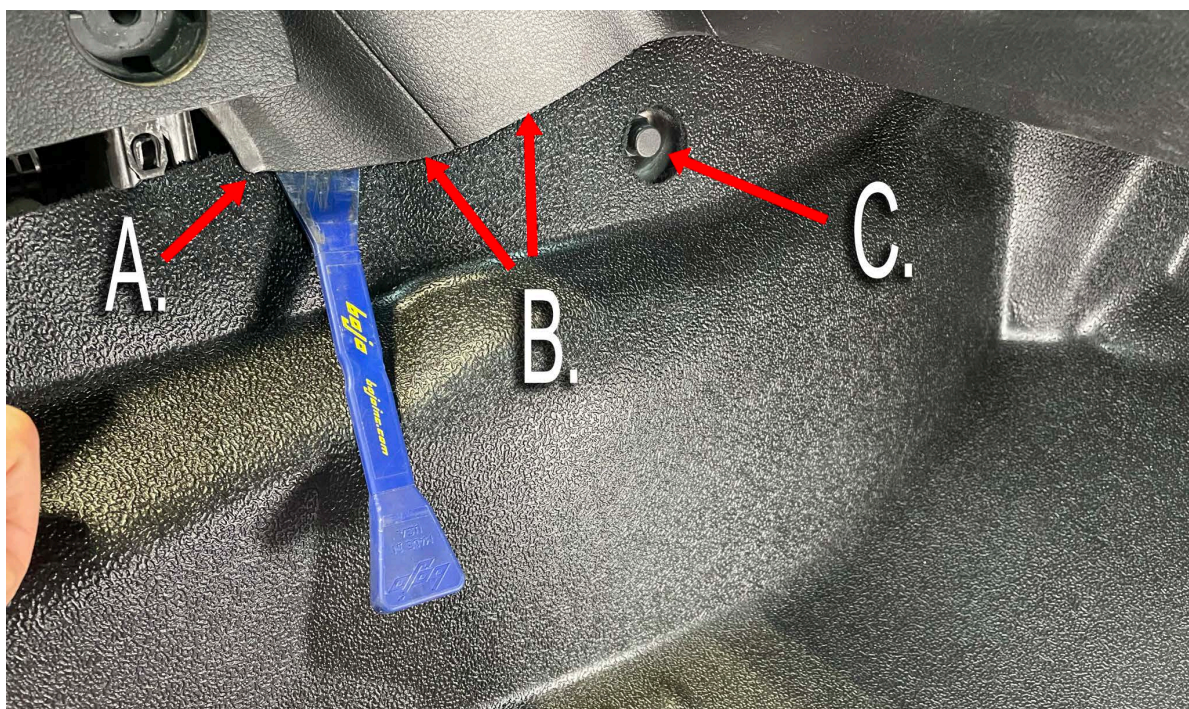


Note: The area where the Armorlite goes under the lower dash, next to console is tight. A trim tool is suggested to guide it in.

A. Note this corner of the dash sometimes digs into the floor causing it to not move up underneath.

B. Use the trim tool and run it side to side under here while guiding the floor underneath dash.

C. Use this peg as a guide to understand if the floor is in position or not.

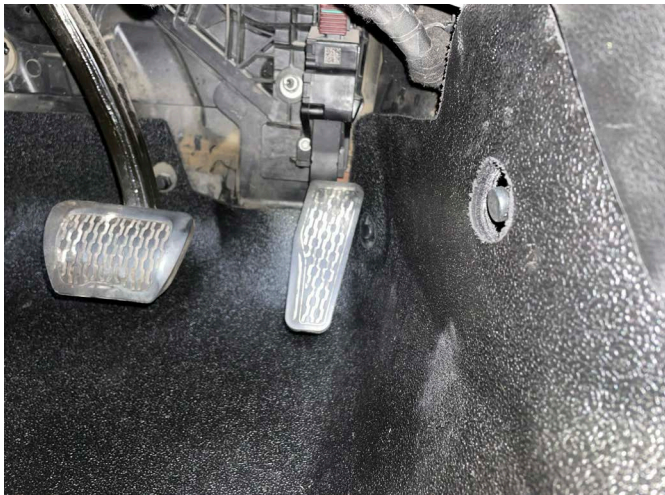


17. Be sure floor is lining up with black plastic pegs on firewall and trans tunnel, and is tight against the body, **MOST IMPORTANTLY LINE UP THE DRAIN HOLE!**

Follow the perimeter of the floor to make sure it is not hung up on brackets or cables. Whenever a fit issue arises we encourage the customer to first look at the edge of the side that it needs to move towards, lift that edge of the floor and adjust in that direction.

You can lift the floor by the hole and pull, you can slap it, you can even get in and kick it. But be sure it is not obstructed along an edge.

Armorlite is a form fitting floor, IT WILL FIT. Each floor is waterjet trimmed by robots in a form fixture to ensure an exact cut every time. Be patient, investigate, or email us for help. Cutting your floor anywhere that is not specified in the instructions floor will void the warranty.



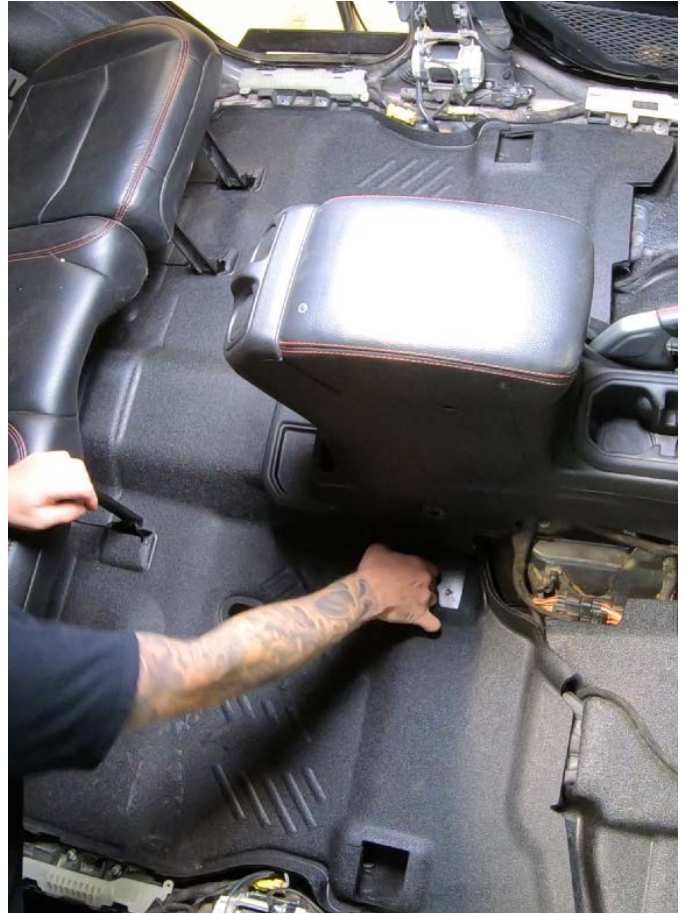
18. Place the rear floor over the console and line up the slits with the back seat brackets. Start to work it down under the seat, again checking the perimeter, especially towards the rear to ensure it is not hung up.



19. Once roughly in position, climb into the vehicle and lift the console up while holding the floor down with your feet, the console should pop up and the floor should fall under it.



20. Continue to work the rear floor into position until both drain plugs are perfectly aligned. Again be sure to look under seat for obstructions.



21. Make sure the under seat air duct is positioned through the floor, and the cable is placed in the corner slit next to the duct. The rear floor should overlap the front floor, and the duct should be on top of the rear floor as shown here.



Example of **Correct** Drain Plug Alignment
Notice opening evenly aligns with sheet metal hole



Example of **INCORRECT** Drain Plug Alignment
Sheet metal opening and floor do not align.

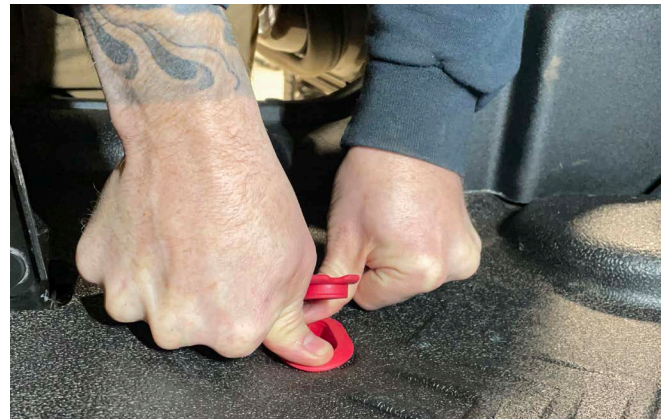


22. Install drain plugs.

Once the floor is aligned, center the drain plug with the opening in the floor.

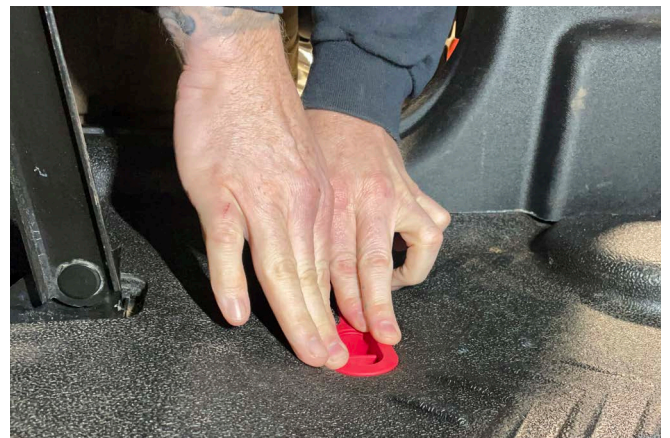


With the plug open, place a thumb on each side of the plug and firmly press the plug down into the metal floor opening.



Once locked into the floor, use your fingers and work the plug down until the flange is tight against the Armorlite surface and 2 ribs are past the sheet metal floor.

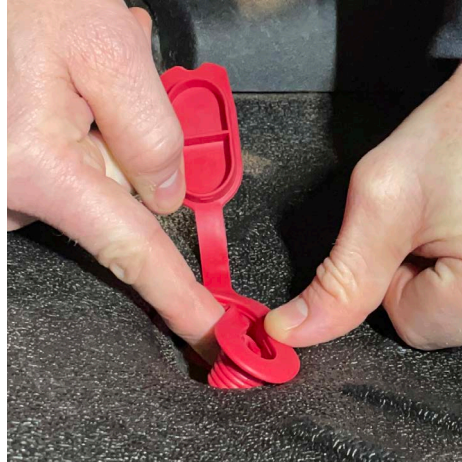
If you are having trouble continue to the next page.



Alternative Drain Plug Install Method:

If your floor is aligned and you are still unable to get it through the metal floor and secured try this method.

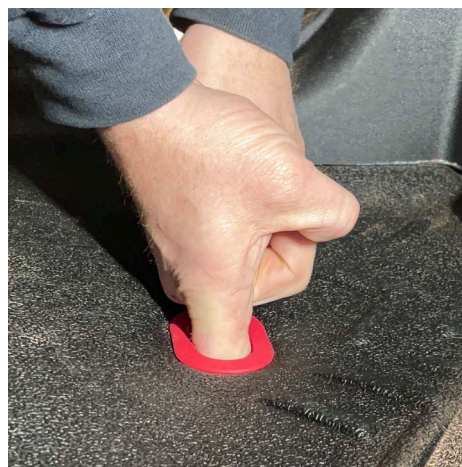
- Deflect the side of the plug inward.
- Work the non deflected side of the plug down into the floor.
- Push the deflected side down into the hole.
- Work the plug down flat, then massage the plug until it returns to normal shape.
- One more time work the top flange of the plug making sure it is flat against the floor.



If you are having a hard time using your fingers you can use the handle of a hammer. Do not hit the plug, and be sure to not bend the metal.

Once you believe the plug is installed correctly, curl a finger under the plug and make sure you can feel it pushing through like the next image.

Properly installed plug should have 2 ribs evenly through the floor, and does not pull out easily.



Note:

- Nothing else should go through the hole with the plug, reroute any wires you may have added using wiring grommets in another location.
- Be sure no sound deadening was added within an inch of the plug hole.

Cargo - Wheelhouse Install

If you purchased a kit that does not include the cargo products please move forward to Step X

23. To install the wheelhouse covers it is necessary to remove the cargo tie down / load floor panels.

Start by opening the covers on the D-Ring tie downs, then remove the T40 torx bolt, repeat on all 6 tie downs and remove panels.

If your vehicle has the Mopar Trail Rail system, unbolt and remove.



24. Remove carpeted wheelhouse covers.



25. Pull out the plastic panels at the back of the cargo area. You will only need to get 1 click out on the bottom area to feed in the wheelhouse covers. No need to fully remove.



26. Using a trim tool start to work in the wheelhouse under the plastic. Make sure to start working the wheelhouse towards the rear of the vehicle.



To ensure proper fit make sure the wheelhouse is tucked under the plastic and back far enough towards the rear of the vehicle.

Example of subwoofer models. Installation is generally the same but the passenger wheelhouse is shorter to accommodate subwoofer and trim.



27. Tuck the front of the wheelhouse cover behind the plastic trim next to the door latch striker. Then work the rest of the wheelhouse edge into place.



28. Push the rear plastic trim back into place once wheelhouse is properly installed.



29. Re-Install the side load floor / tie down panels.

Before tightening make sure wheelhouse is pushed all the way outward against wheelhouse as the arrows illustrate in the picture. Failure to do so can result in the cargo mat not fitting properly.



Cargo - Closeout Install

30. IMPORTANT For the cargo mat and closeout panel it is important to first identify if you have a cloth model with NO gap hiding flipper, or if you have a factory leather model WITH the gap hiding flipper.

Example of a Cloth model with **no** gap hiding flipper.



Example of a Leather model **with** gap hiding flipper, highlighted in photo.
For this model skip to step X.



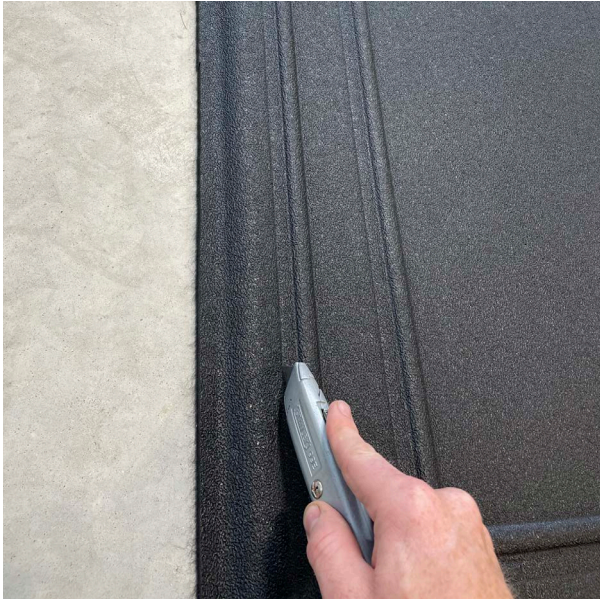
Cloth model, with no gap hiding flipper:

31a. With the back seat laid down, install the closeout panel down behind the seat. This part overlaps with the rear floor. Use the included grommets to attach to peg under seat on waterfall.



Leather model with gap filler ONLY

31b. The closeout panel and cargo mat have scribe lines which are shown here highlighted in red. Cut along these lines and discard the orange highlighted parts.



To make these cuts be sure to use a quality fresh razor knife. Make multiple shallow cuts. The first pass should be straight on the line through the rubber side, it will act as a guide for the following passes. Once partially through you can fold on the line to make remaining cuts easier, or use scissors at this point to finish cutting.



31b continued. With the backseat down, lift the gap hiding flipper, then feed in the two pieces of the closeout.

Once pushed down tuck the backside of it under the flapper flange.



Closeout panel should overlap onto the rear floor, be sure to secure using the grommets provided.



Cargo - Cargo Mat Install

32. Install cargo mat, which should overlap everything and remain on top. The cargo mat is not intended to replace the load floor. It will lift up with the original load floor as shown below.



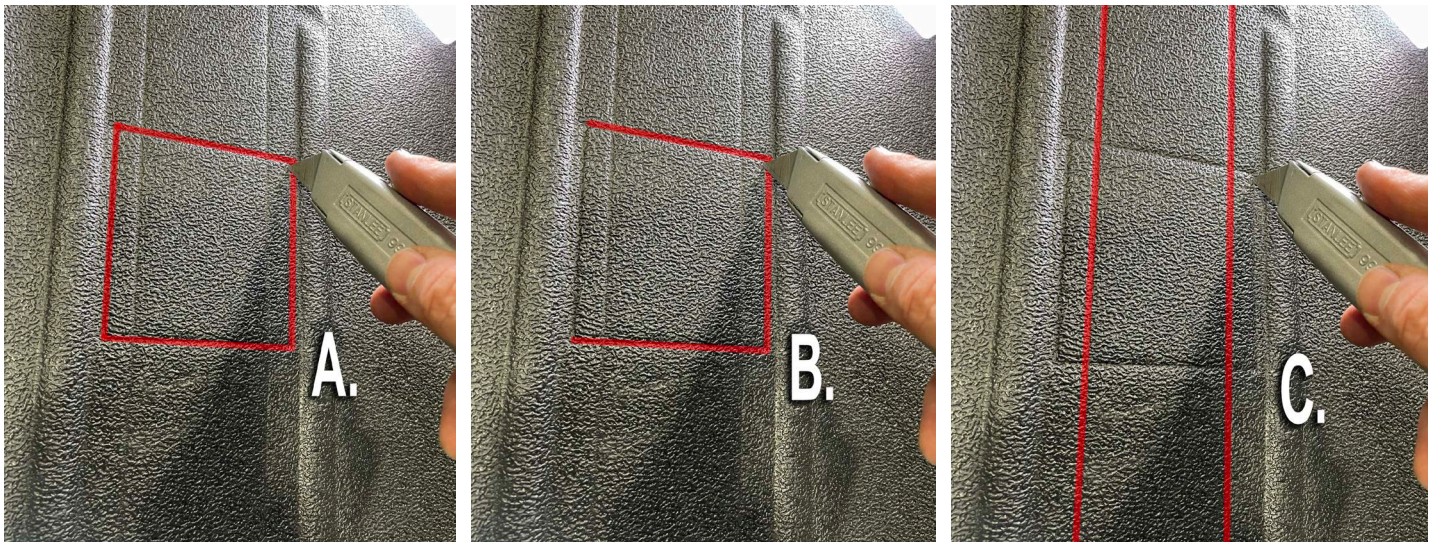
33. Cargo mat tie down cut outs.

Optional: if you wish to have access to the factory tie down rings, you can cut the Armorlite cargo mat in the scribed sections.

A. Cut the optional square completely and remove

B. Another option is to cut three sides to allow access to tie down rings but then cover when not in use.

C. If equipped with a Mopar Trail Rail system, cut the lines for the long rectangle that allows access to rail system.



Cut these lines for Mopar trail rail system

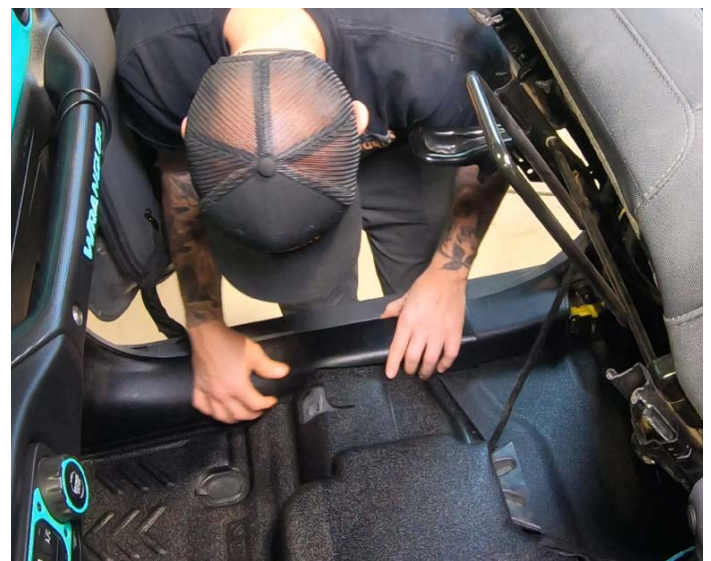
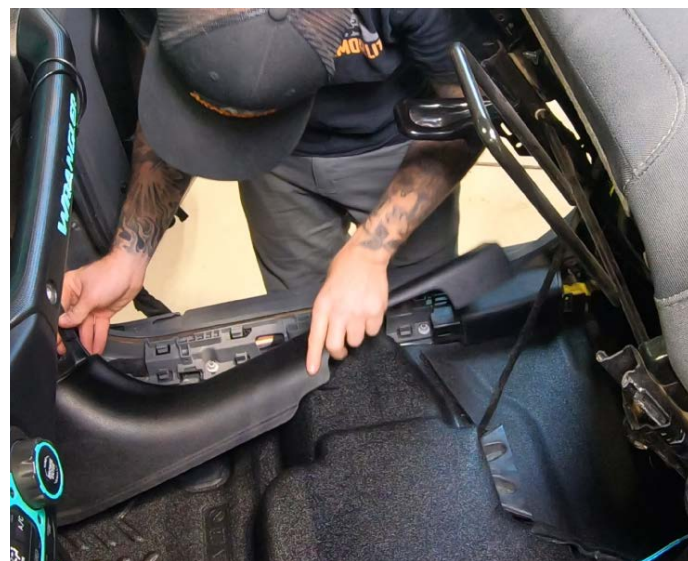


Cut these lines for standard cargo tie downs

34. Reinstall your trim in reverse order of removal.

Tips:

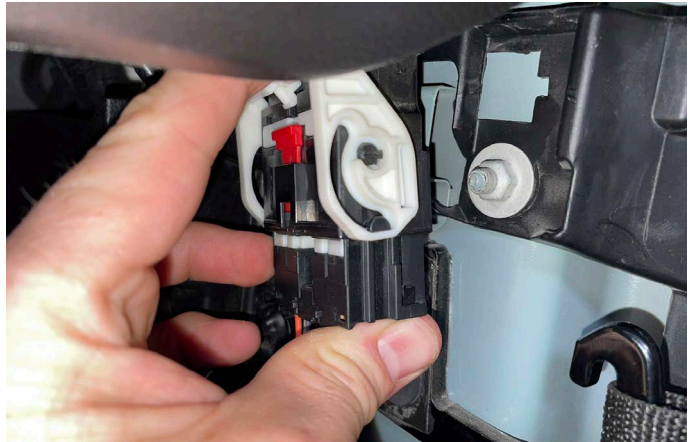
- Double check the clips are intact prior to installing.
- Familiarize yourself with how the trim clips attach, carefully aligning them as you push trim panel into place.
- Little effort is needed to clip trim into place, if you find it is not going in, inspect why and then try again. Forcing the trim when not aligned can bend the clips making it more difficult to install.



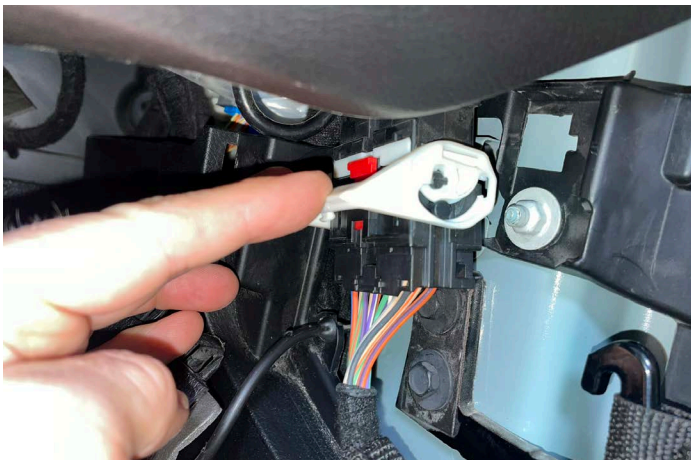
35. Install the nut that resides behind the door harness connector. Torque to 1.4 ft. lbs.



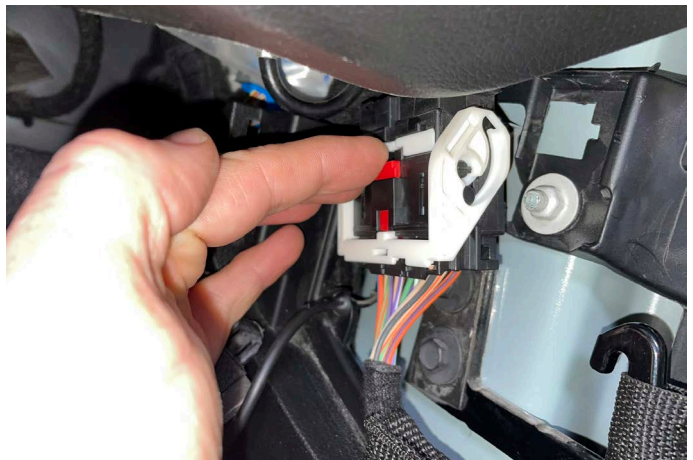
36. Reinstall the body side of the door harness connector pressing the barbed peg into the hole in the body.



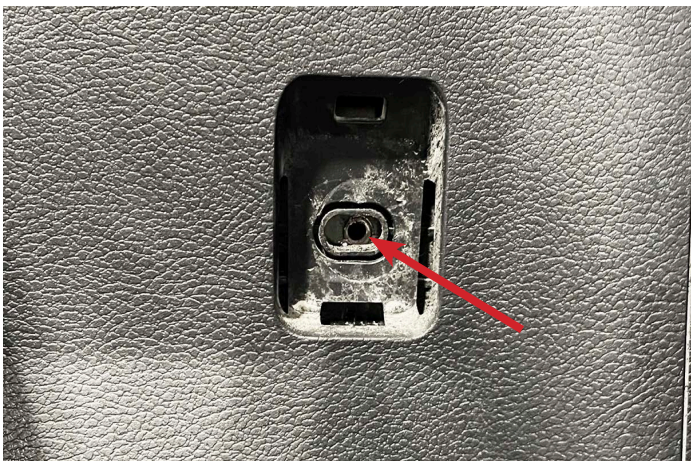
37. Connect the door harness connector by pushing the connectors together then rocking the white lever down.



38. Once lever is down slide the red latch down to lock lever in place. Reinstall harness cover trim.



39. Reinstall the 4 bolts for center console. Be sure holes lined up as shown below. For the rear of the console, you may need to apply pressure down by leaning on the armrest pad. Once aligned install bolt with 10mm socket and reinstall plastic covers. Torque to 4.4 ft. lbs.

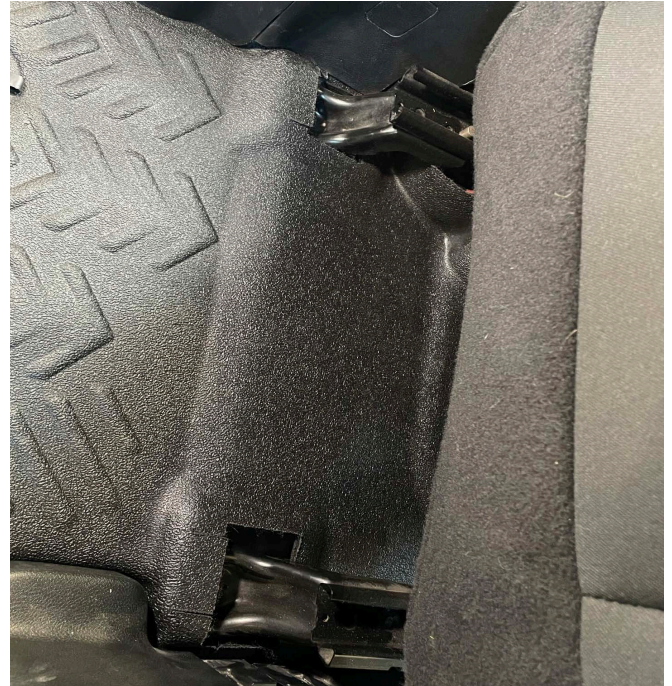


If seats were fully removed, reinstall following factory repair manual for bolting down and making electrical connections.

40. Bolt down Seats.

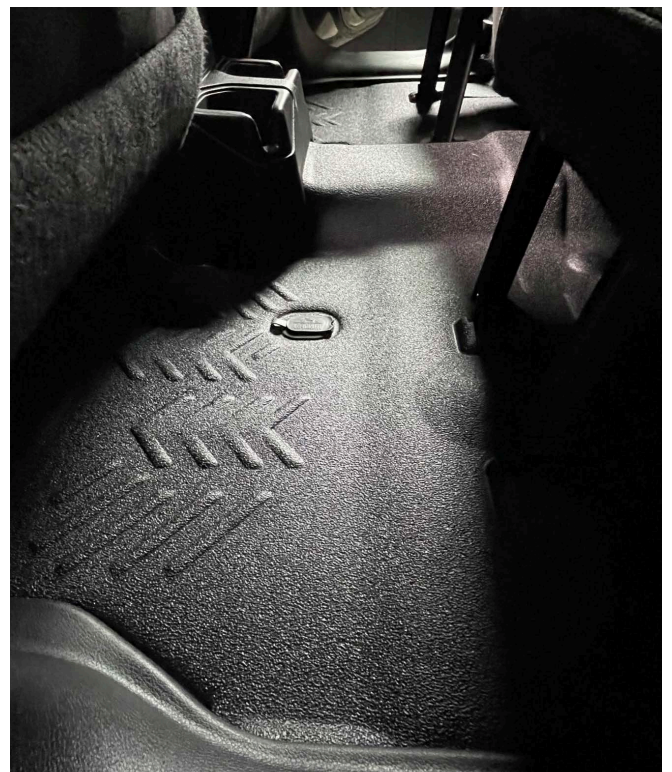
Position the back of the seat brackets above the openings, then slide the seat down into the openings.

The seat brackets are intended to be partially covered, the relief cuts allow access for the hardware and tools.



41. Tighten your seat bolts to 36 ft. lbs. Double check all grommets are installed, and pedals move freely up and down.

Congratulations! You are done! Enjoy.



Cleaning and care:

In most cases water and a brush is all that is needed to clean your floor. Be sure to open your plugs before spraying the floor down with water.

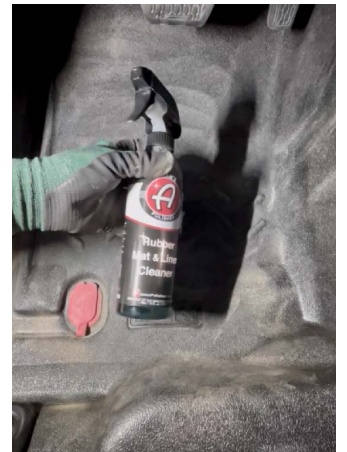
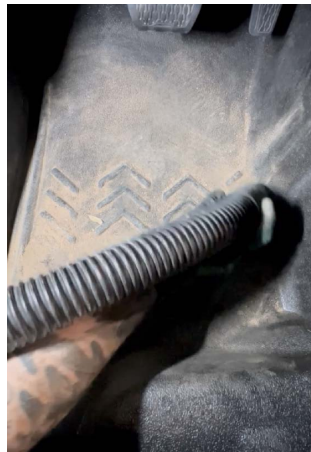
Break up any mud then rinse down the drain.



Another method is to break up any mud with a brush vacuum clean. Afterwards, you can mist with water and wipe with a towel.

If your floor continues to look dusty or gray, use Adam's rubber floor cleaner, which is available at GoArmorlite.com.

Lightly mist the floor with a small amount of floor cleaner, and wipe down with a towel.



DO NOT use an excess amount of soap as it can make the floor slick.

Do NOT use any silicone-based products, or products that add shine, these can make the floor slick.

Keeping your floor clean will prolong the life of your Armorlite floor system.

We warranty the Armorlite floor system against normal off road and every day use wear and tear when properly maintained.